

Supplementary data:

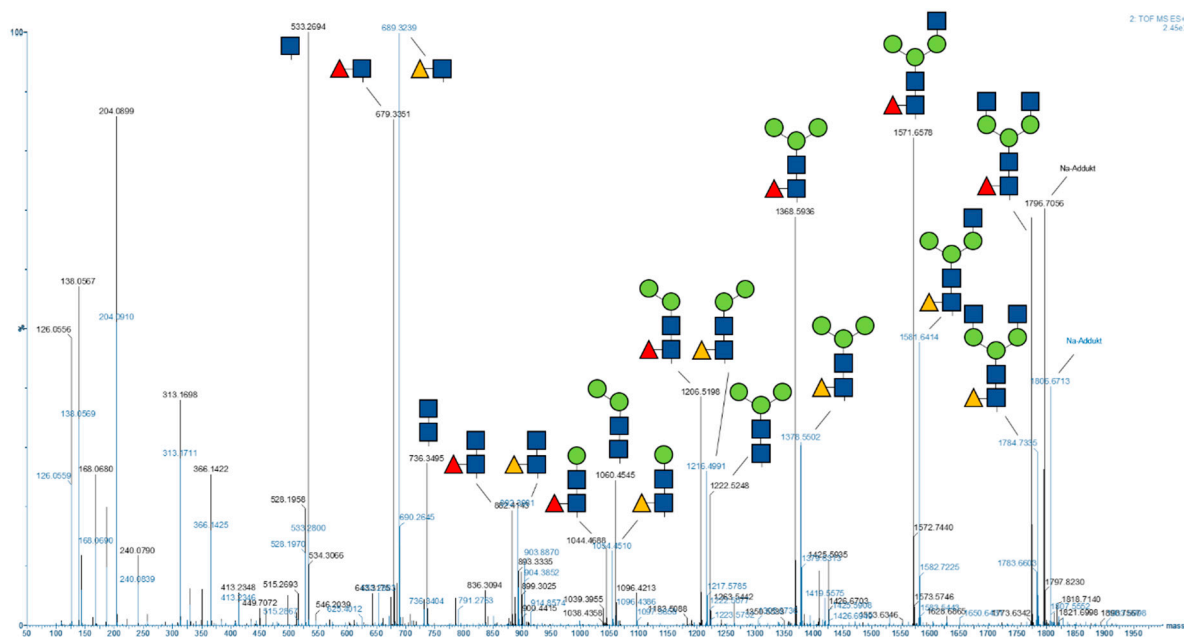


Figure S1. MSe spectra overlay obtained at RT 14.50 min for GOF (black) and RT 13.89 min for GOF* with 5-alkynylfucose incorporated (blue) highlighting a 9.99 Da mass shift. All molecular ions are $[M+H]^+$ containing the RapiFluor-MS™ tag from Waters.

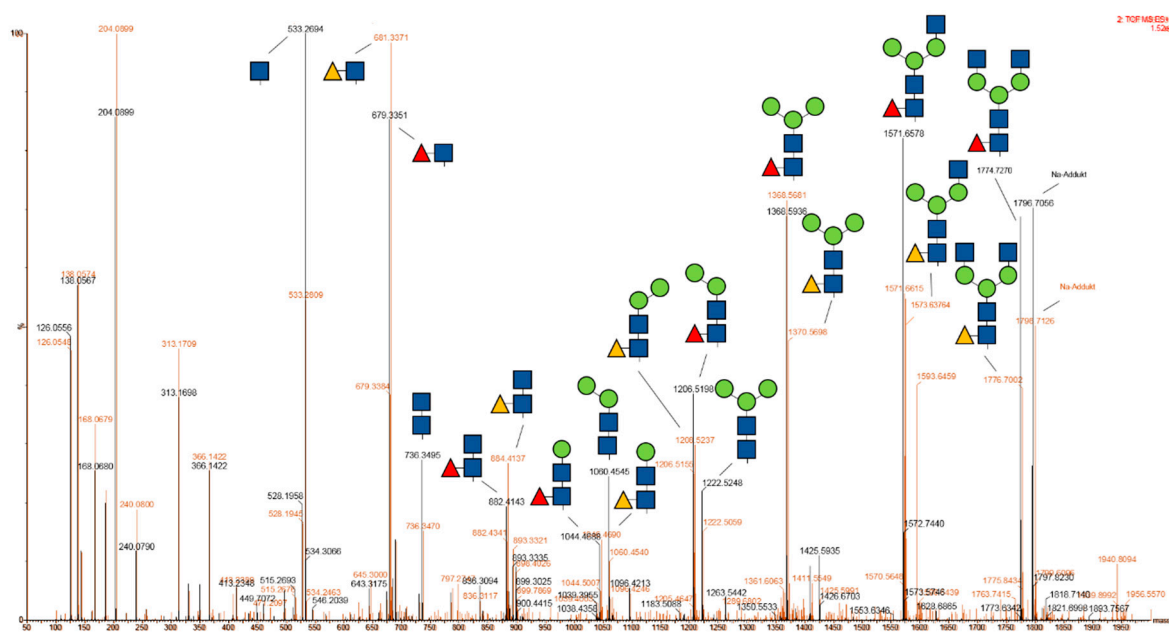


Figure S2. MSe spectra overlay obtained at RT 14.50 min for GOF (black) and RT 12.50 min for GOF* with 2-fluorofucose incorporated (red) highlighting a 1.99 Da mass shift. All molecular ions are $[M+H]^+$ containing the RapiFluor-MS™ tag from Waters. .