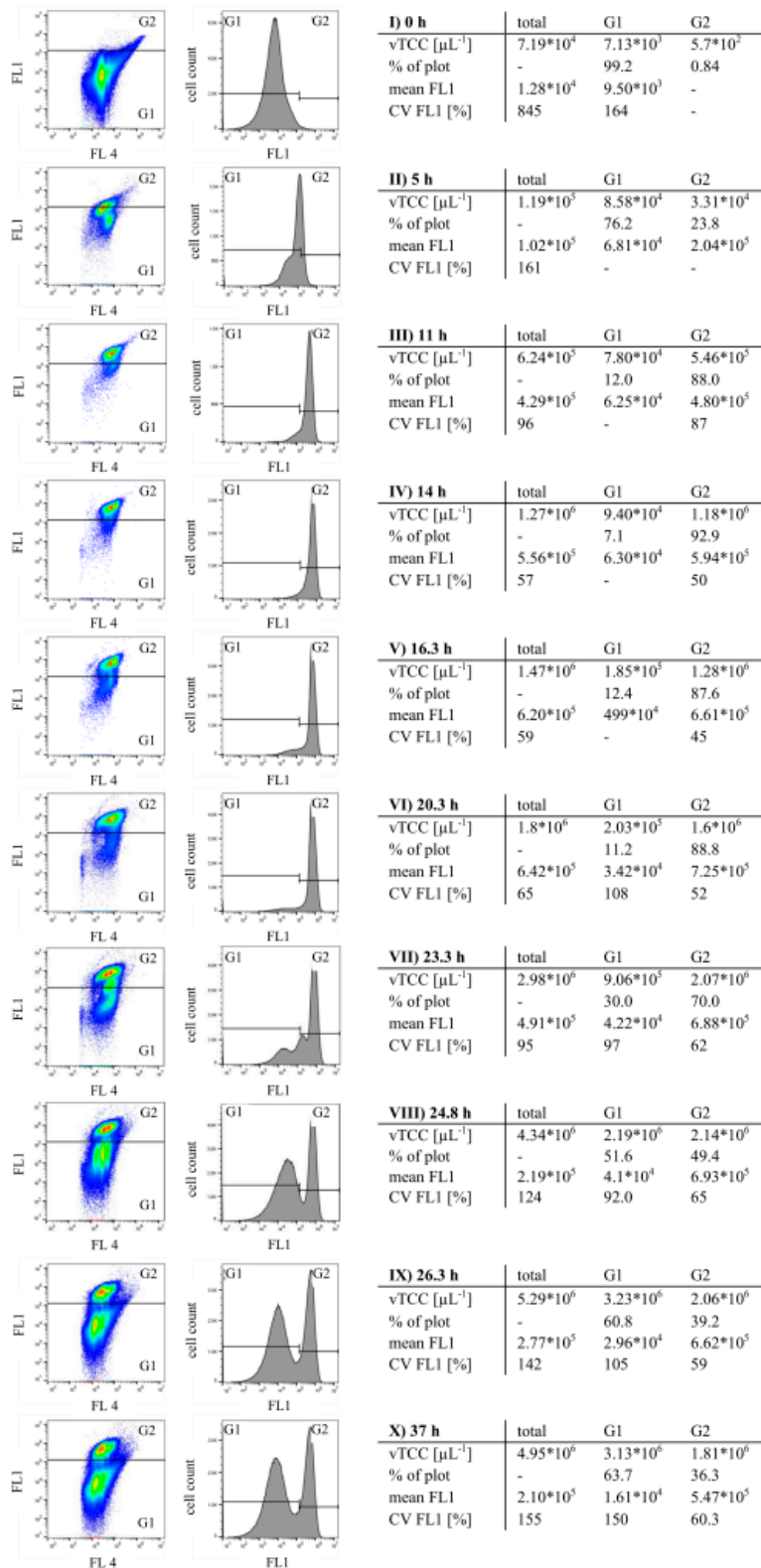


**Supplementary materials to the article: “The Bistable Behaviour of *Pseudomonas putida* KT2440 during PHA Depolymerization under Carbon Limitation” by S. Karmann et al.**



**Figure S1: Fluorescence scatter plots and histograms from flow cytometry measurements during the PHA polymerization - depolymerization experiment.** The panels show scatter plots of green BODIPY 493/503 fluorescence (FL1, PHA) and red SYTO 62 fluorescence (FL4, DNA) and their corresponding histograms for FL1. The samples I – X were taken throughout the bioprocess depicted in Figure 1. The gates G1 and G2, low and high FL1 values, respectively, were defined based on the scatter plot from the initial time point and help to visualize the evolution of the FL1 signal. The tables next to the panels comprise the respective values of volumetric total cell count (vTCC), mean FL1 and its coefficient of variation (CV) for the total population and the two gates.