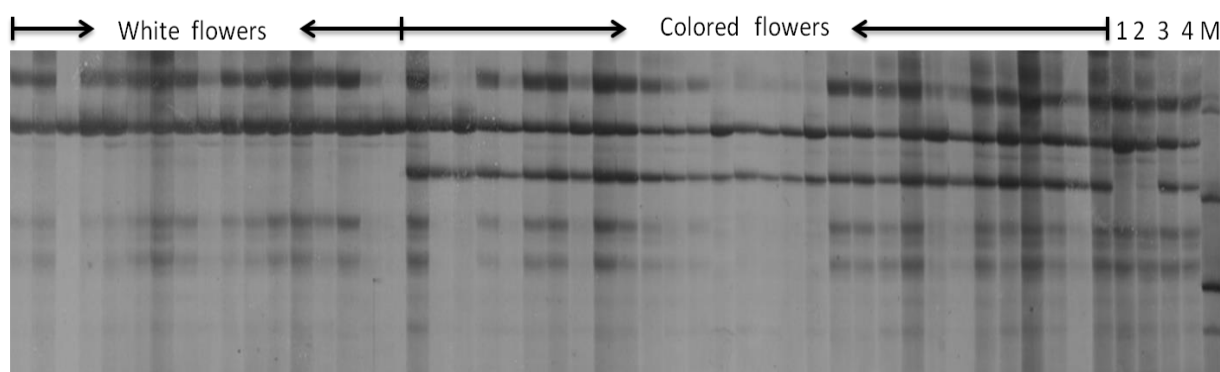


Article

# Linkage map of a gene controlling zero tannins (*zt-1*) in faba bean (*Vicia faba* L.) with SSR and ISSR markers



**Fig. S1** PCR amplification results of the ISSR marker ISSR10 in part of the  $F_2$  population segregating for *zt-1*. 1, M3290; 2, Qinghai12; 3, white flower bulk; 4, purple flower bulk; M, Marker (100 bp). The  $F_2$  population include 17 white flower and 30 purple flowers.