

Supplementary

A Thermolabile Phospholipase B from *Talaromyces marneffei* GD-0079: Biochemical characterization and Structure dynamics study

Rabia Durrani¹, Faez Iqbal Khan^{2*}, Shahid Ali³, Yonghua Wang³ and Bo Yang^{1*}

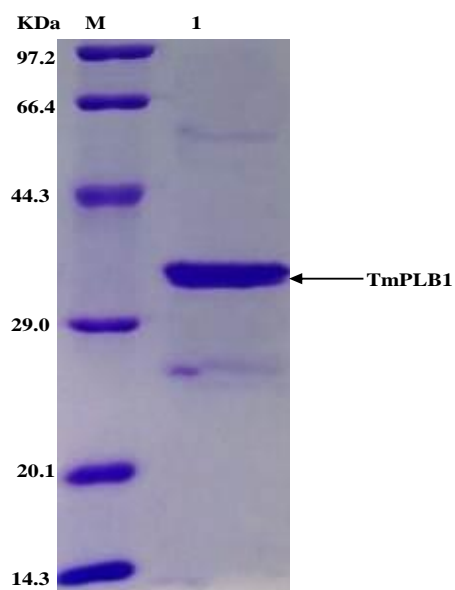


Fig S1. Purification of phospholipase B TmPLB1 by nickel-chelate chromatography and eluted with washing buffer 50 mM phosphate buffer (PB), (pH 7.4) that contained 500 mM imidazole. **KDa** (molecular weight of the protein marker in kilo daltons). **Lane M** (molecular weight of marker). **Lane 1.** Purified TmPlb1.

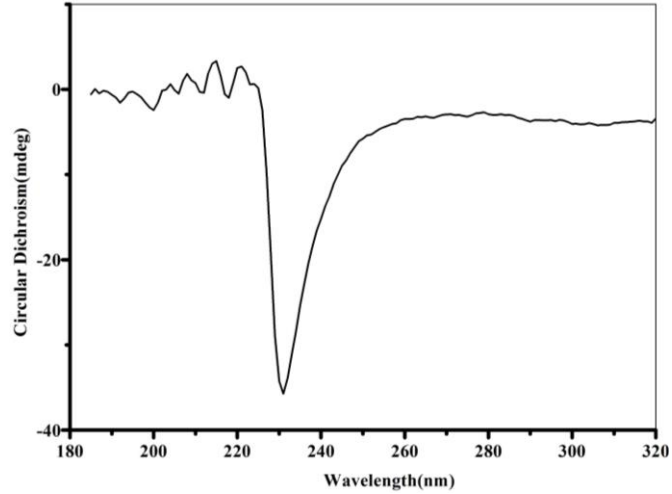


Fig S2. Far-UV CD spectra of TmPLB1. The protein was incubated at 25°C in 20 mM sodium phosphate buffer (pH 7.4) at a concentration of 0.5 mg/mL. Unfolding was followed by monitoring the CD signal at 222 nm.

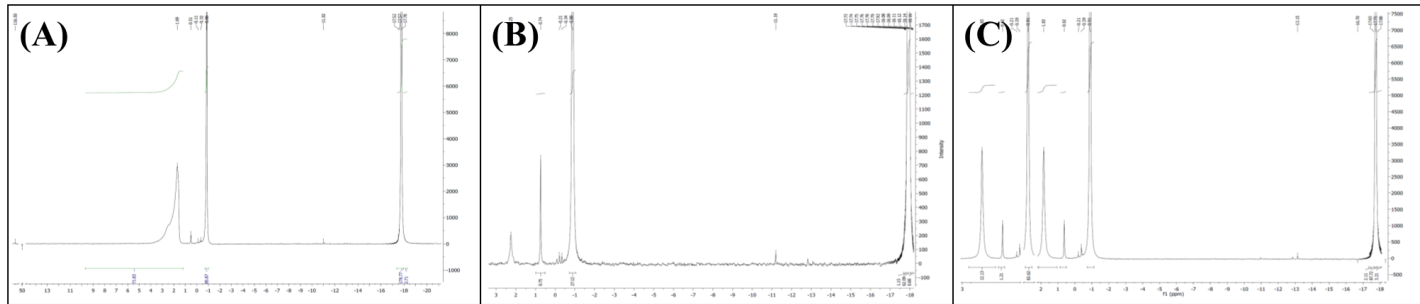


Fig. S3. Rapid Identification and classification of phospholipids in ³¹P NMR by enzymatic reaction mechanism of TmPLB1 at three different time intervals (A) 24hr, (B) 48hr, and (C) 72hr with internal standard Triphenyl Phosphate (TPP).

Table S1. Overview of TmPLB1 purification.

Purification Step	Total Activity (U)	Total Protein (mg)	Specific Activity (U/mg)	Yield (%)	Fold
Lysate	1775	95	18.6	100	1
Affinity Chromatography	240	4.96	48	13.5	2.58