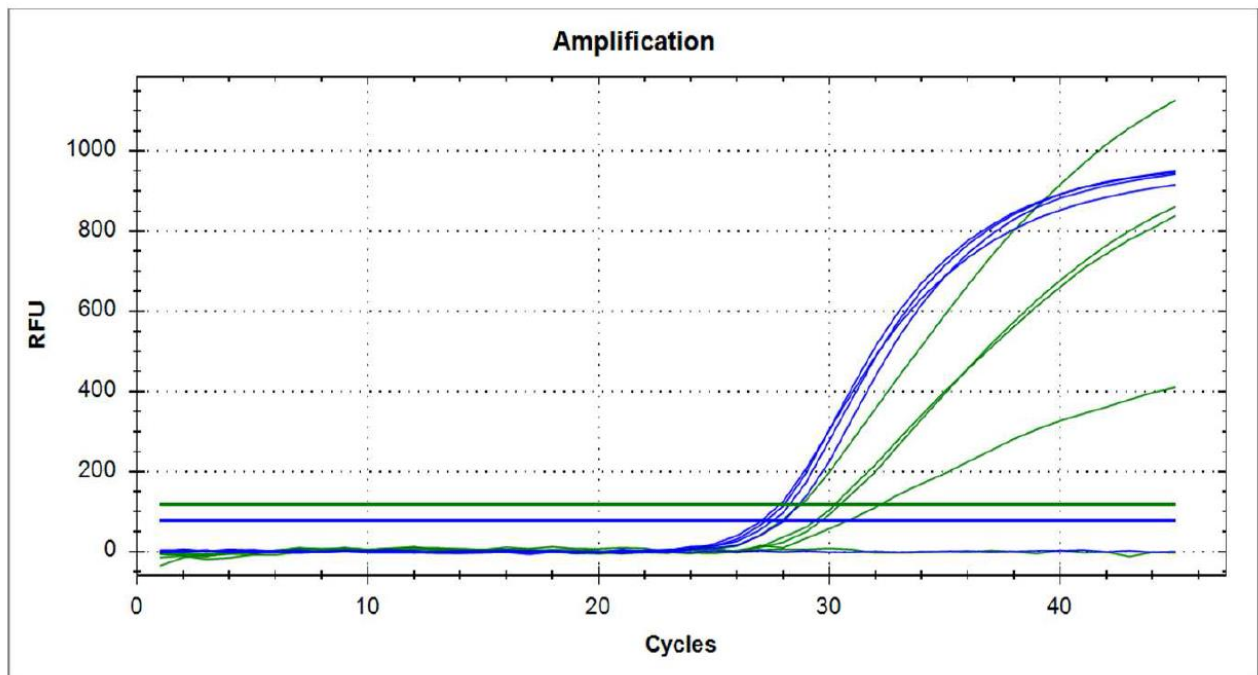


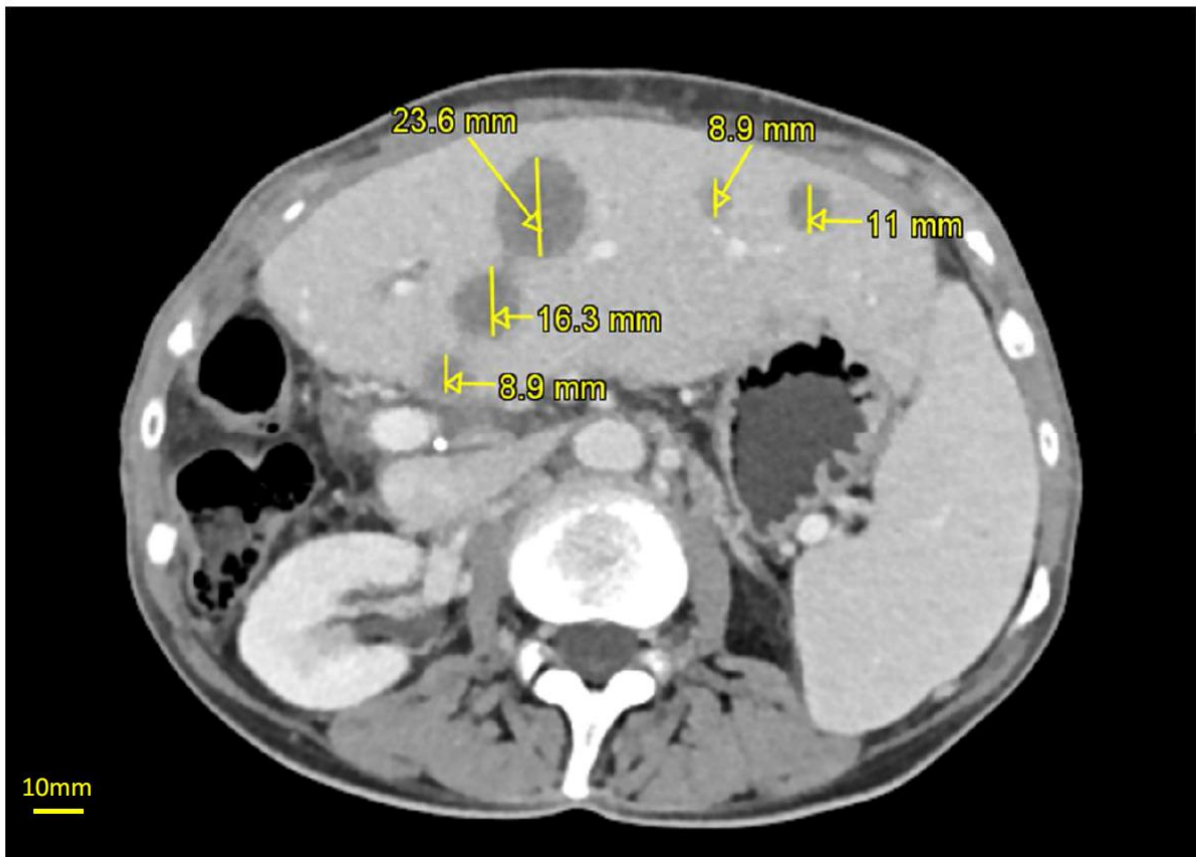
# Supplementary Materials: Assessment of a High Sensitivity Method for Identification of *IDH1* R132x Mutations in Tumors and Plasma of Intrahepatic Cholangiocarcinoma Patients

Caterina Peraldo-Neia, Maria Scatolini, Enrico Grosso, Pasquale Lombardi, Roberto Filippi, Chiara Raggi, Caterina Marchiò, Giuliana Cavalloni, Massimo Aglietta and Francesco Leone



**Figure S1.** Ct values and amplification curves of qPCR of cfDNA obtained from 1 *IDH1*m patient analyzed at different time points. In blue the WT curves, in green the mutated ones.

A



B

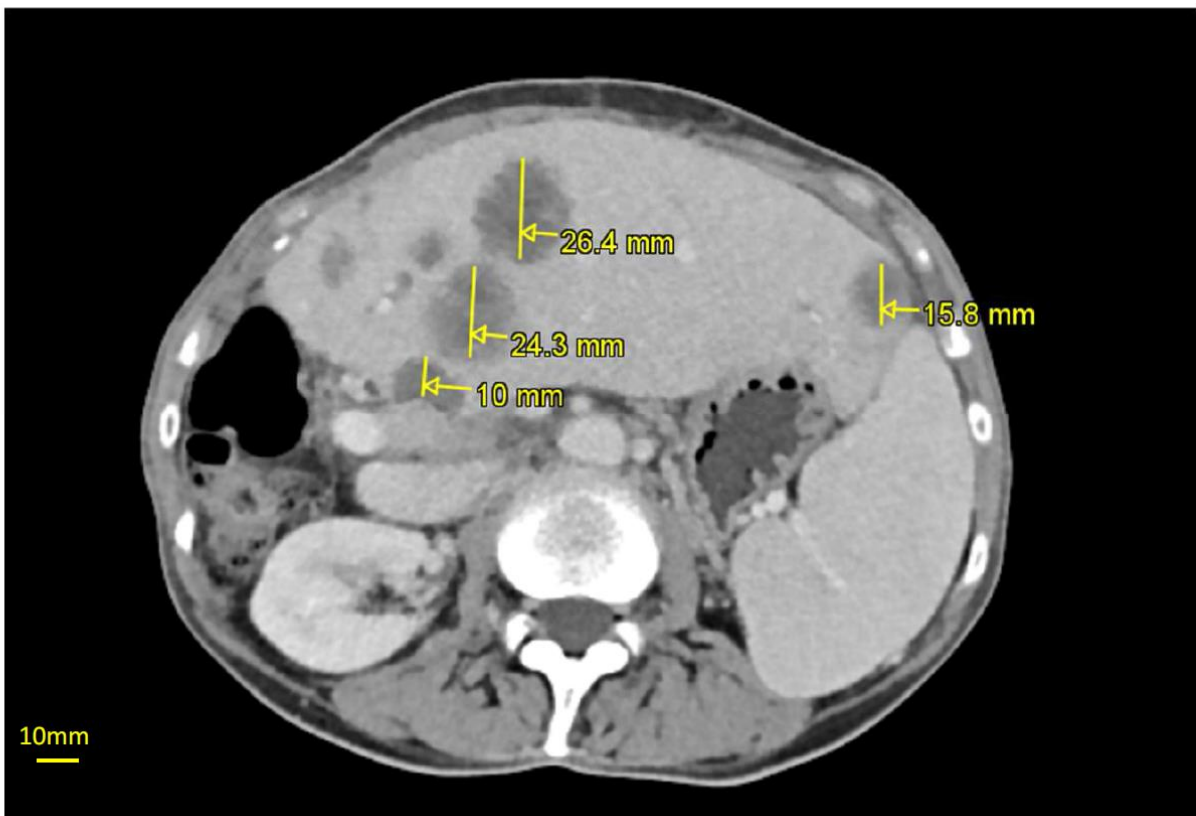
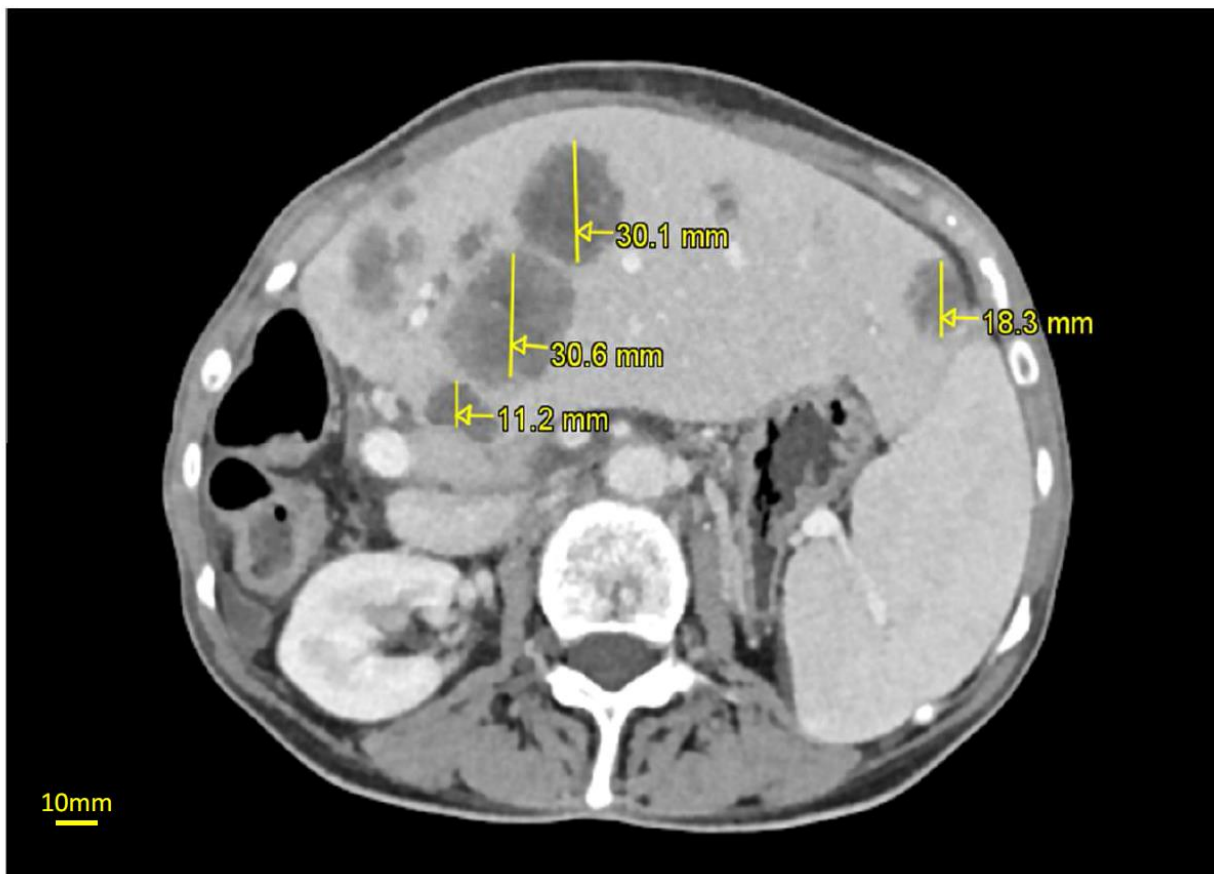
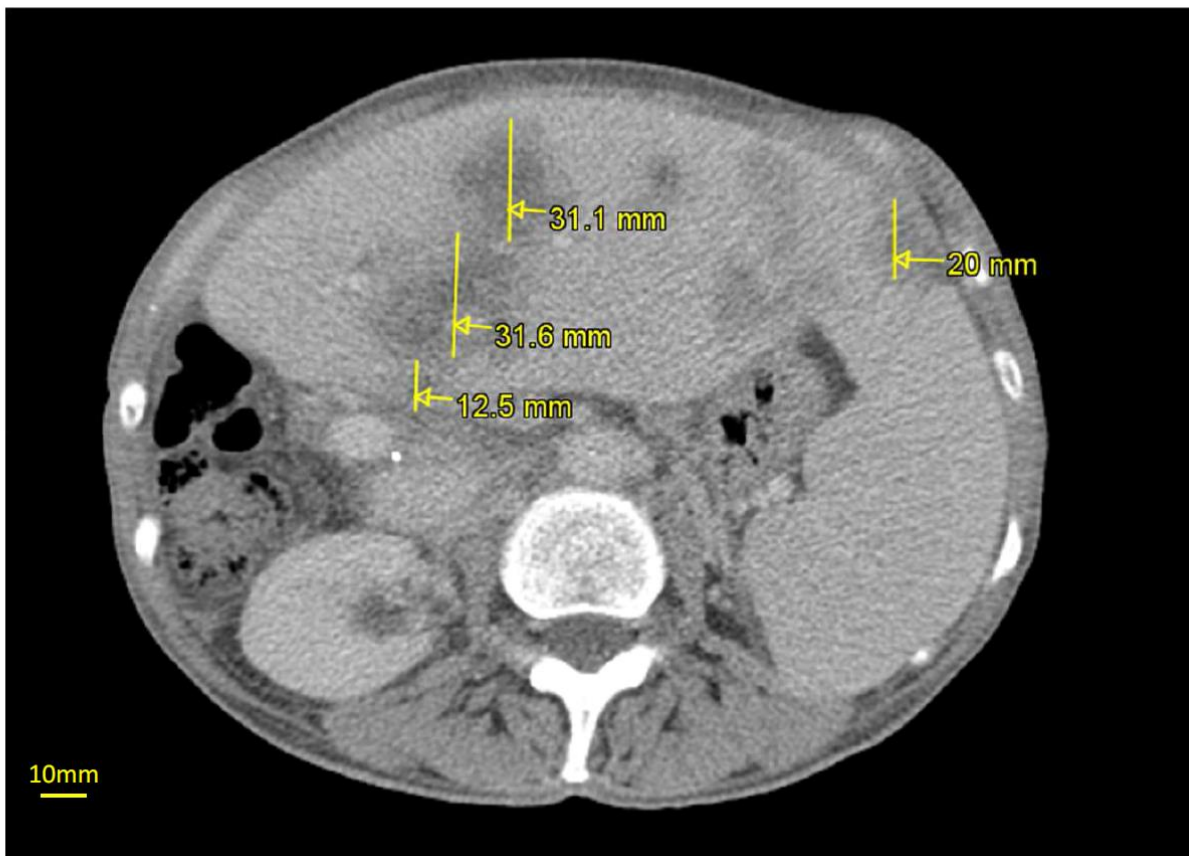


Figure S2. CT scan images at the baseline (A) and after 6 weeks (B). Scale bar represent 10 mm.

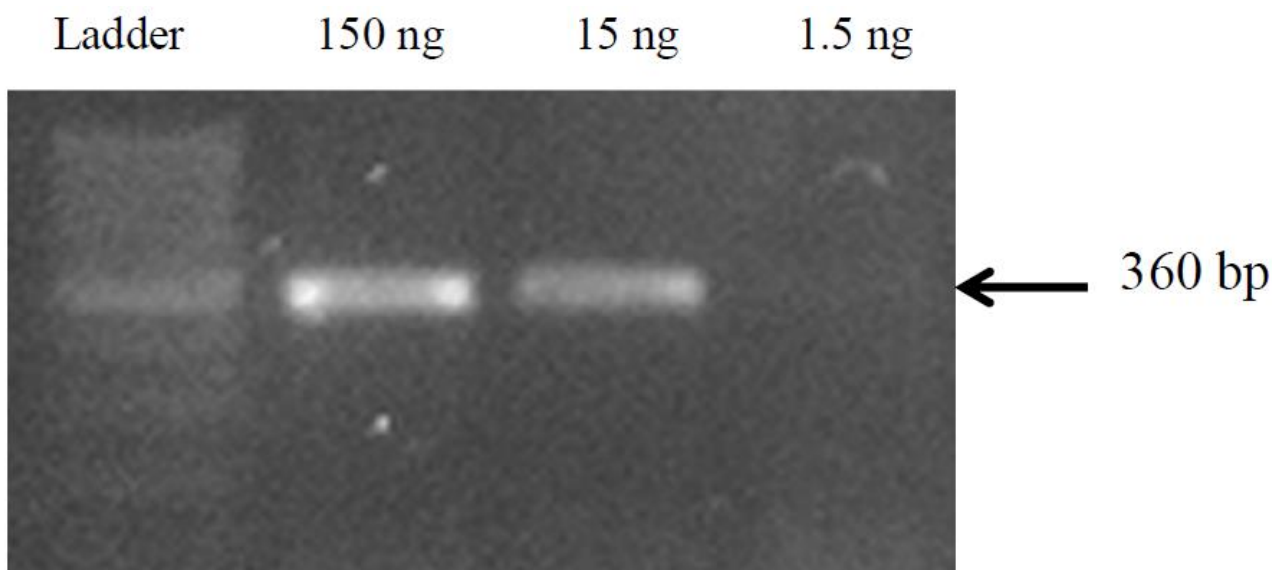
A



B



**Figure S3.** CT scan images at 12 weeks (A) and 18 weeks (B) from baseline. Scale bar represent 10 mm.



**Figure S4.** Sensitivity of nested PCR for the amplification of *IDH1* exon 4.

**Table S1.** Primers used for *IDH1* mutational analysis.

**Probes and oligonucleotides for qPCR.**

Probes/Primers	Oligonucleotides sequence
WT_probe	CAT-AGG-lnTlnClnG-lnTCA-TGC-T
R132G	CAT-AGG-lnTlnGlnG-TCA-TGC-T
R132C	CAT-AGG-lnTlnTlnG-lnTCA-TGC-T
R132S	CAT-AGG-lnTlnAlnG-lnTCA-TGC-T
R132L	CAT-AGG-lnTlnAlnT-lnTCA-TGC-T
R132H	CAT-AGG-lnTlnClnA-lnTCA-TGC-T
FW_primer	GTG-AGT-GGA-TGG-GTA-AAA-C
RW_primer	CAT-GCA-AAA-TCA-CAT-TAT-TGC

lnX = LNA modified X.

**Oligonucleotides for Nested PCR.**

Primers	Oligonucleotides sequence
Forward external primer	5'-TGAGCTCTATATGCCATCACTGCA-3'
Reverse external primer	5'-CAATTCATACCTTGCTTAATGGG-3'
Forward internal primer	5'-GCAGTTGTAGGTTATAACTATCC-3'
Reverse internal primer	5'-TGGGTGTAGATACCAAAAAG-3'

