

Supplementary Materials

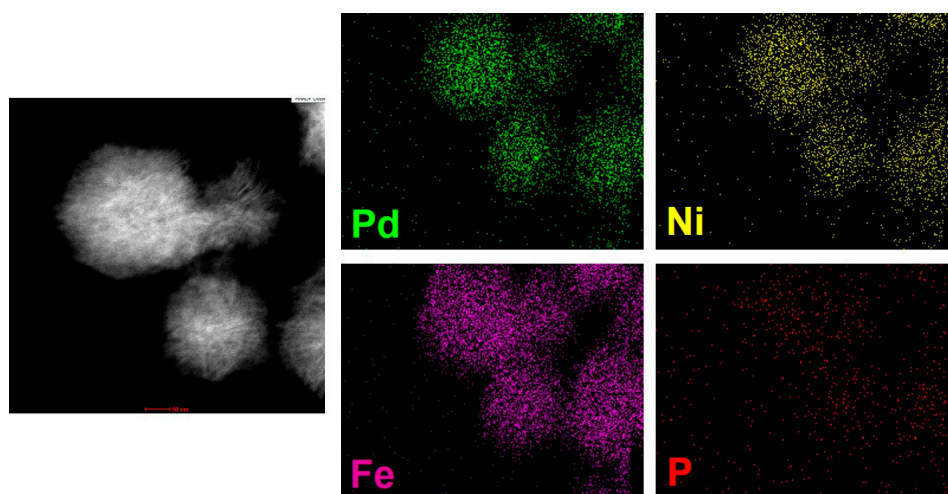


Figure S1. STEM-EDS elemental maps of the NPFNP-1.

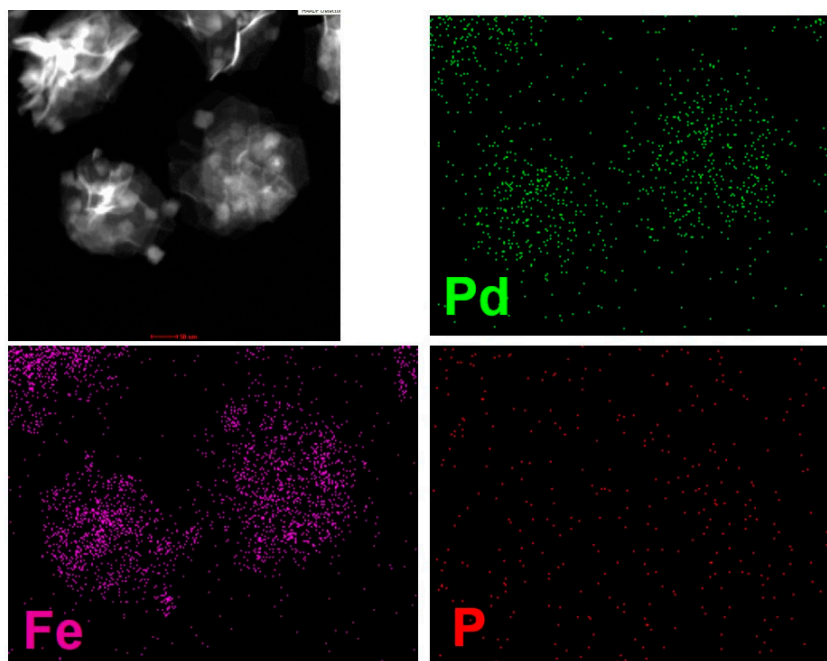
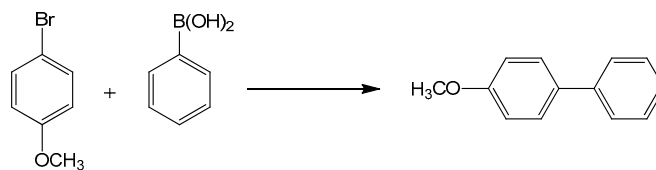


Figure S2. STEM-EDS elemental maps of the Pd-Fe₃O₄.

Table S1. Suzuki-Miyaura coupling reactions of 4-bromo anisole with phenylboronic acid catalyzed by NPFNP-2.

Entry	Conversion (%)	Selectivity (%)
1	57.43	97

Reaction condition: 1.3 mg of NPFNPs (0.34 mol%), 1.0 mmol of 4-bromoanisole 1.2 mmol of phenylboronic acid, 2.0 mmol of potassium carbonate, and 6.0 mL of a mixture of ethanol and water (1:1) at 50 °C for 1 h.