

Supporting Information

Rice Husk Derived Porous Silica as Support for Pd and CeO₂ for Low Temperature Catalytic Methane Combustion

Dongjing Liu^{1,2}, Dominik Seeburg¹, Stefanie Kreft¹, René Bindig³, Ingo Hartmann³, Denise Schneider⁴, Dirk Enke⁴, Sebastian Wohlrab^{1*}

¹ Leibniz Institute for Catalysis at the University of Rostock, Albert-Einstein-Str. 29a, D-18059 Rostock, Germany; liudongjing19@163.com; dominik.seeburg@catalysis.de; Stefanie.kreft@catalysis.de; Sebastian.wohrlab@catalysis.de

² School of Energy and Power Engineering, Jiangsu University, Xuefu Str. 301, 212013 Zhenjiang, China; liudongjing19@163.com

³ Deutsches Biomasseforschungszentrum gemeinnützige GmbH, Torgauer Str. 116, 04347 Leipzig; rene.bindig@dbfz.de; ingo.hartmann@dbfz.de

⁴ Universität Leipzig, Institute of Chemical Technology, Linnéstr. 3, 04103 Leipzig, Germany; denise.schneider@uni-leipzig.de; dirk.enke@uni-leipzig.de

*Correspondence: sebastian.wohrlab@catalysis.de; Tel.: +49-381-1281-328

Table S1. Elemental content of the RHS support determined by ICP-OES (without oxygen).

Element	Amount / wt %
Si	98.29
Ca	0.62
P	0.29
K	0.21
Al	0.20
S	0.15
Mg	0.12
Na	0.05
Cu	0.01
Zn	0.01
Mn	0.05
Ti	Traces
Cr	Traces

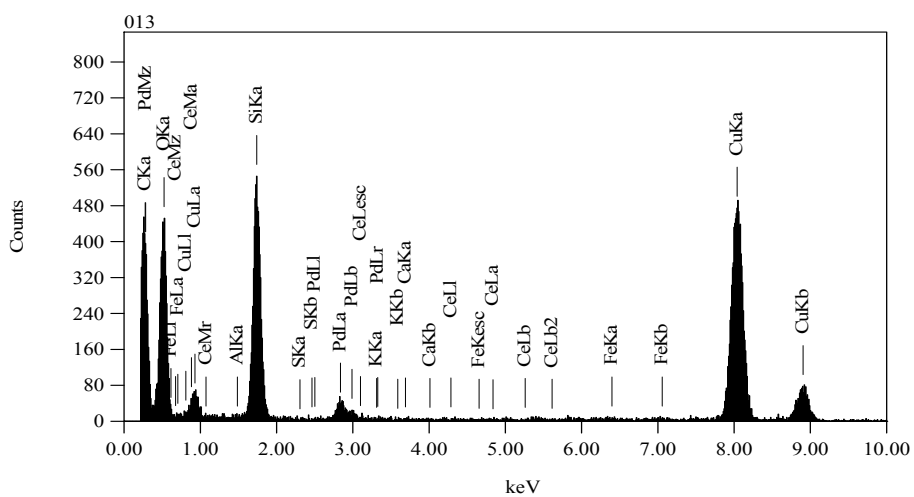
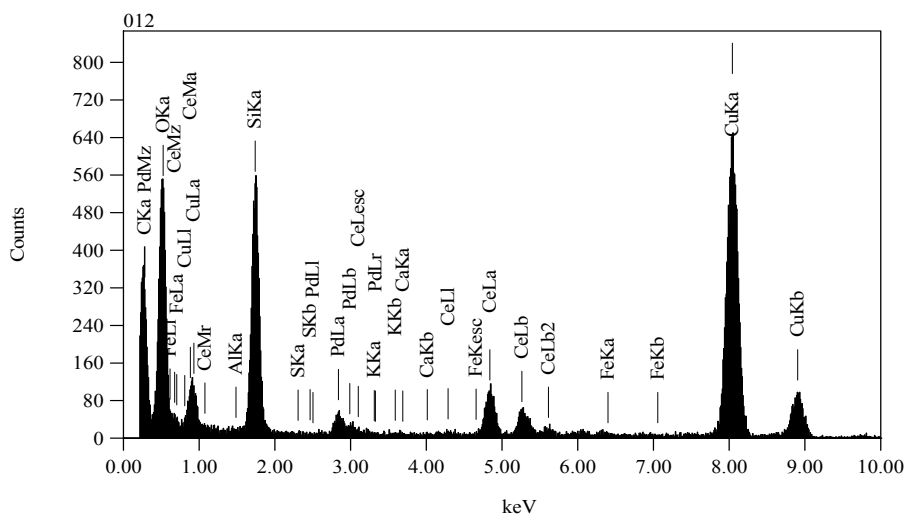
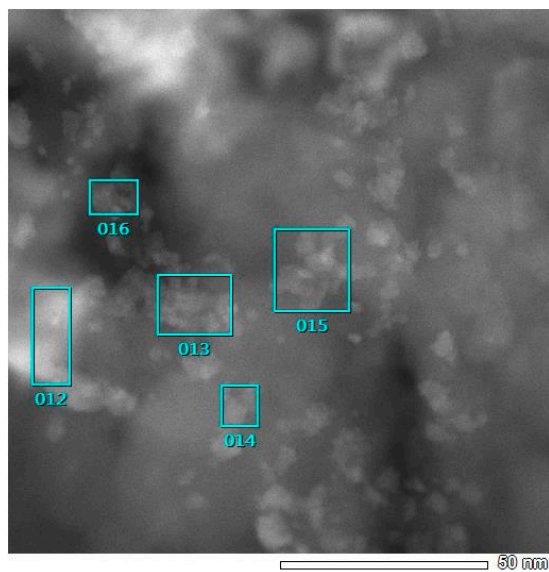


Figure S1. EDX analysis of fresh 0.6Pd/CeO₂/RHS.

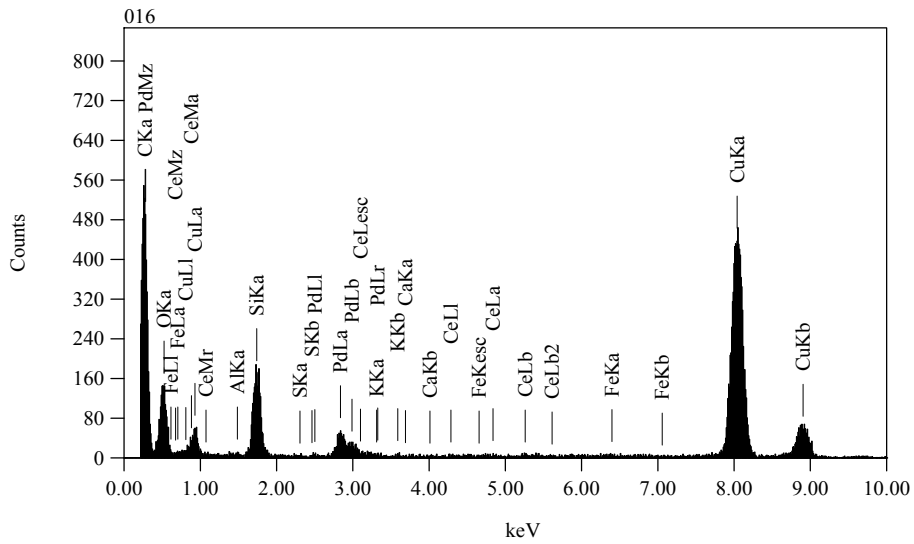
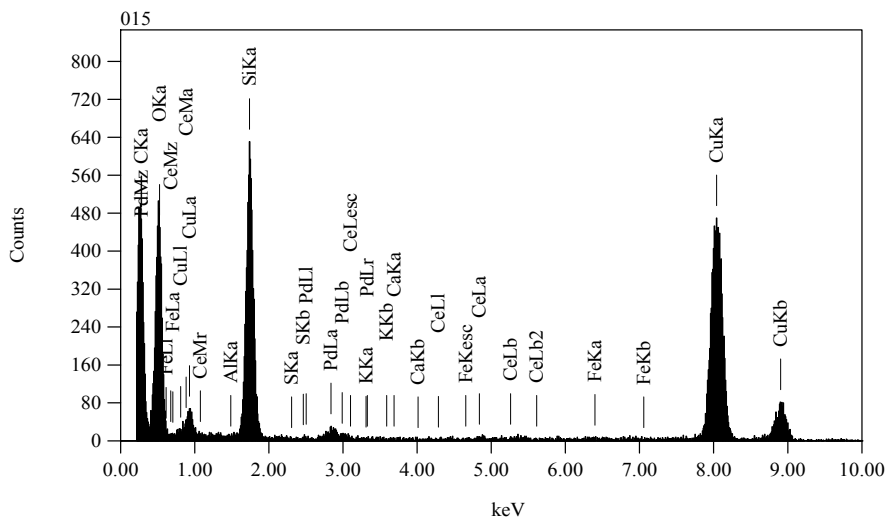
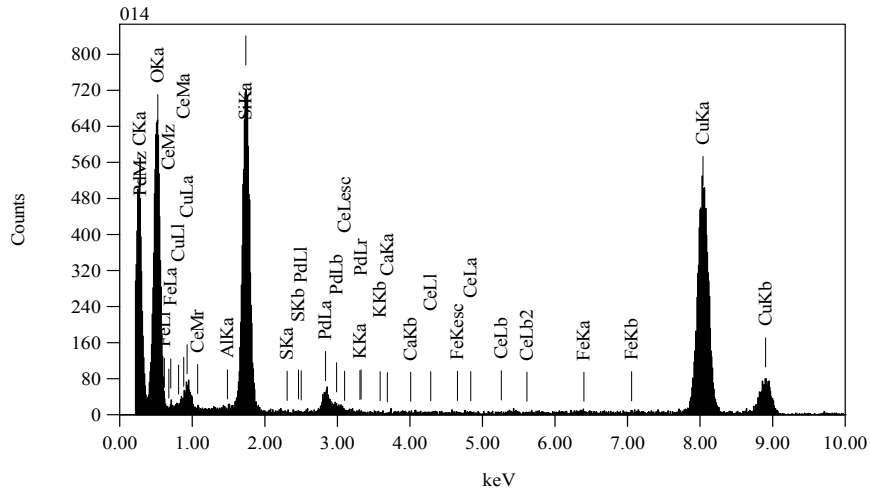


Figure S1. (continued)

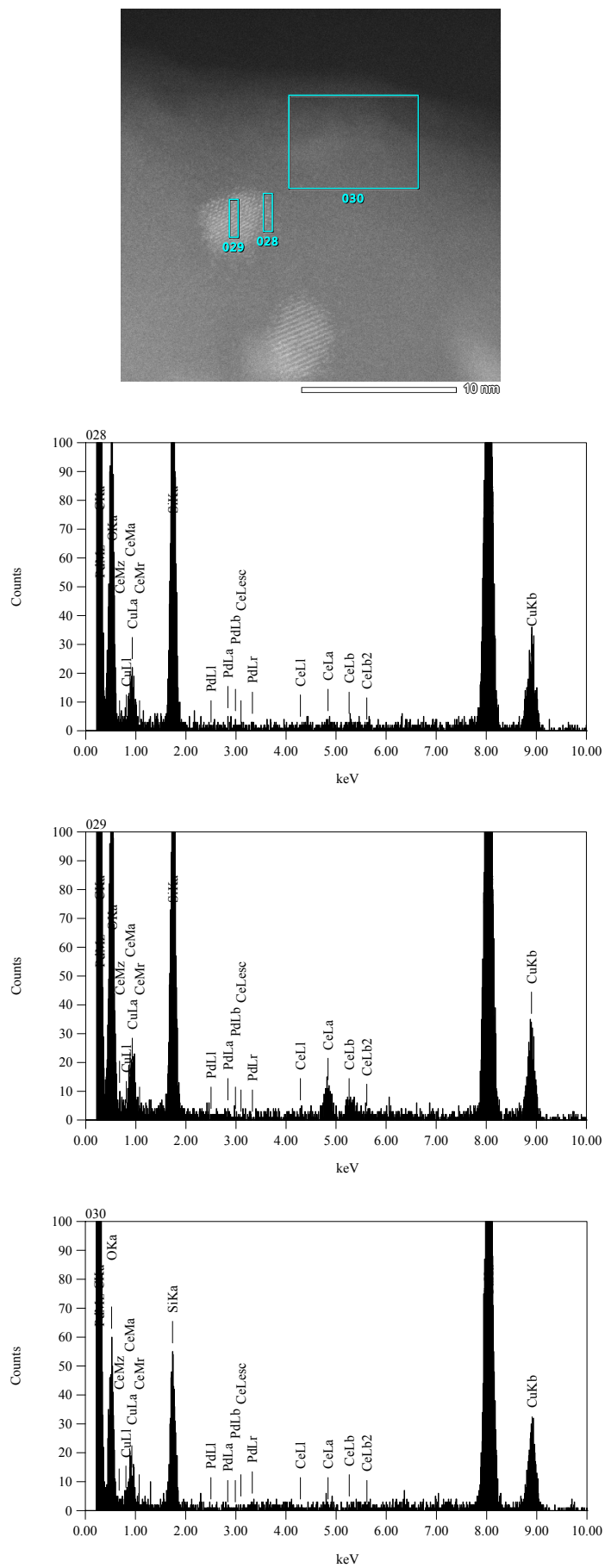


Figure S2. EDX analysis of spent 0.6Pd/CeO₂/RHS.

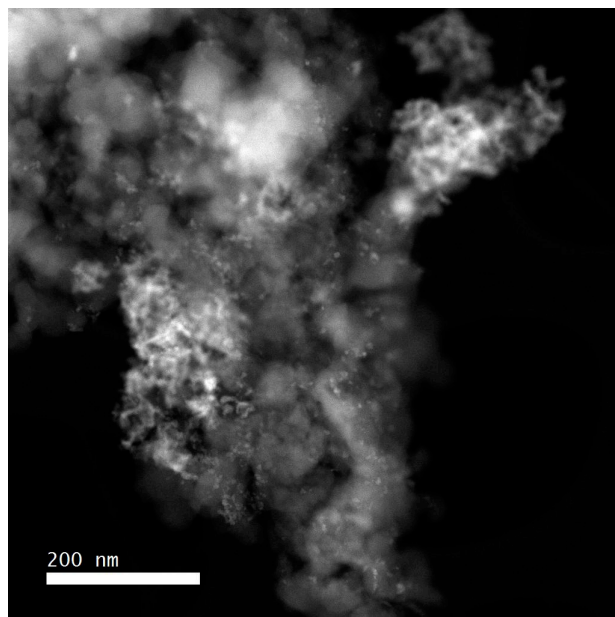


Figure S3. Electron microscopy: TEM image of catalyst 0.6Pd/CeO₂/RHS (fresh),
overview.

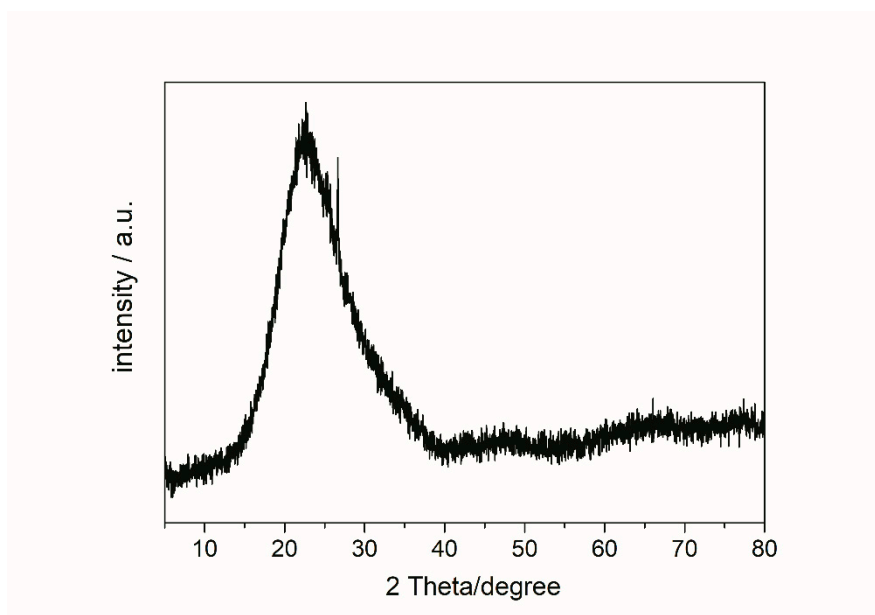


Figure S4. The XRD pattern of RHS.