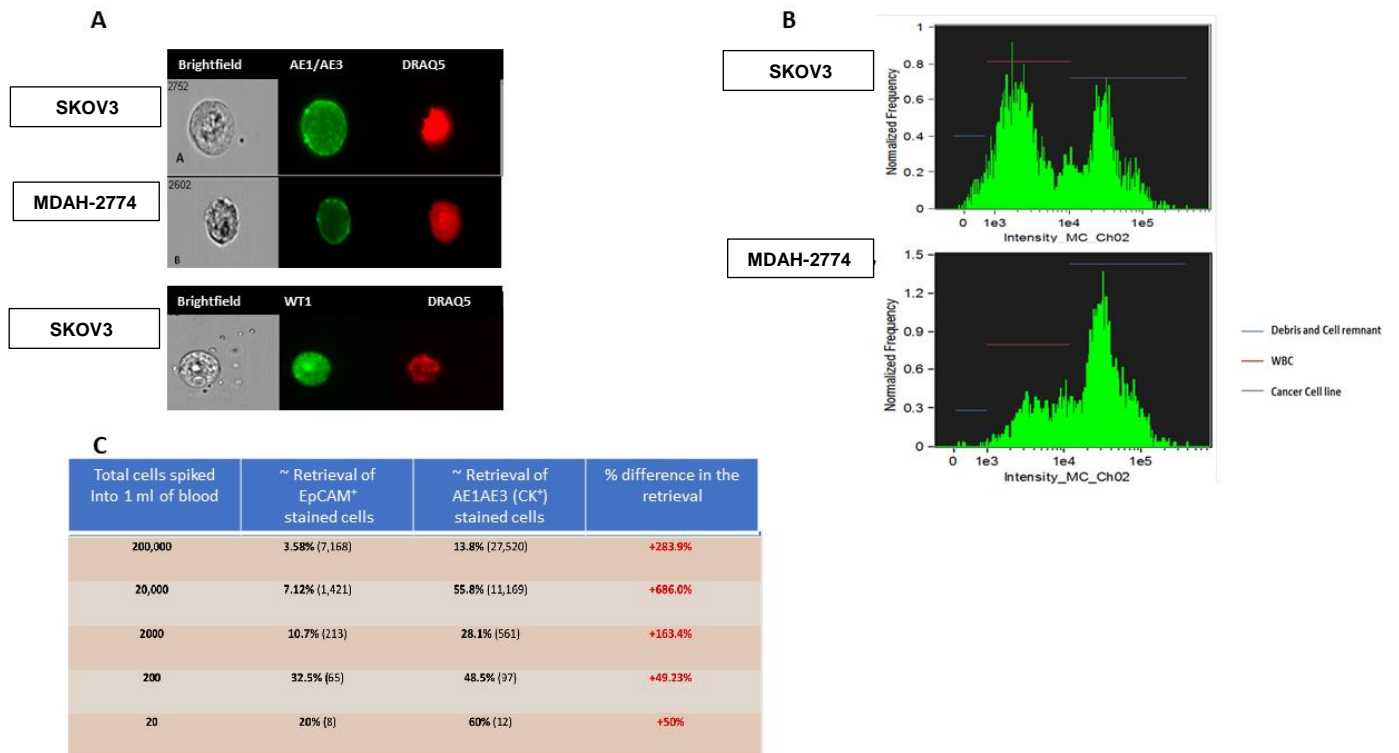
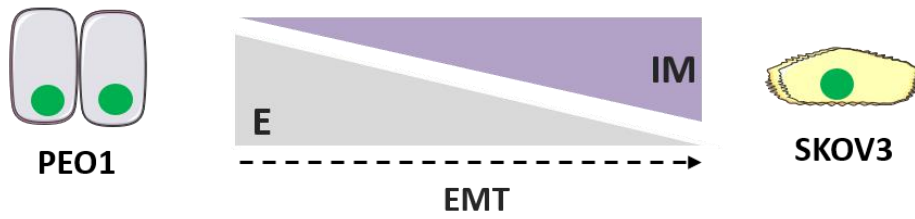


## Supplementary Figures

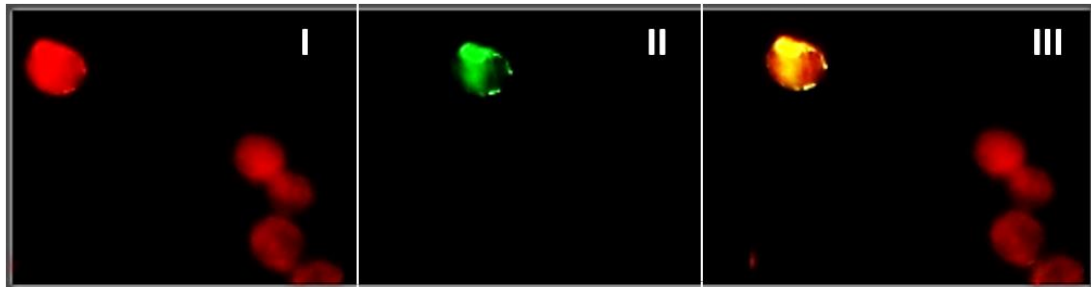


**Figure S1. Panel A:** Images show positive AE1/AE3 staining of SKOV3 & MDAH-2774 cells. Positive AE1/AE3 staining, is signified by a deep green halo around cells cytoplasm, and positive DRAQ5 (red) staining of nucleus; 40 x magnification. **Panel B:** Separation of the captured cell populations, was measured by intensity of AF488 staining of the AE1/AE3 antibody in channel 2. The 3 populations highlighted in the charts identified based on staining pattern as labelled (blue for cell debris, red for white blood cells (WBC), and purple for the cell line). **Panel C:** Retrieval of cells from spiking experiments using EpCAM<sup>+</sup> and CK<sup>+</sup>.

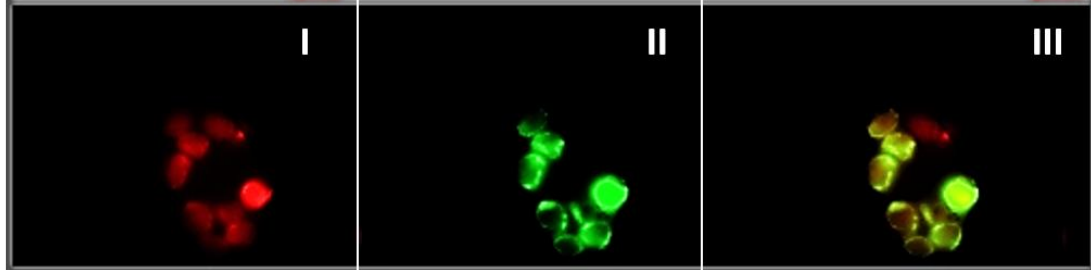
A.



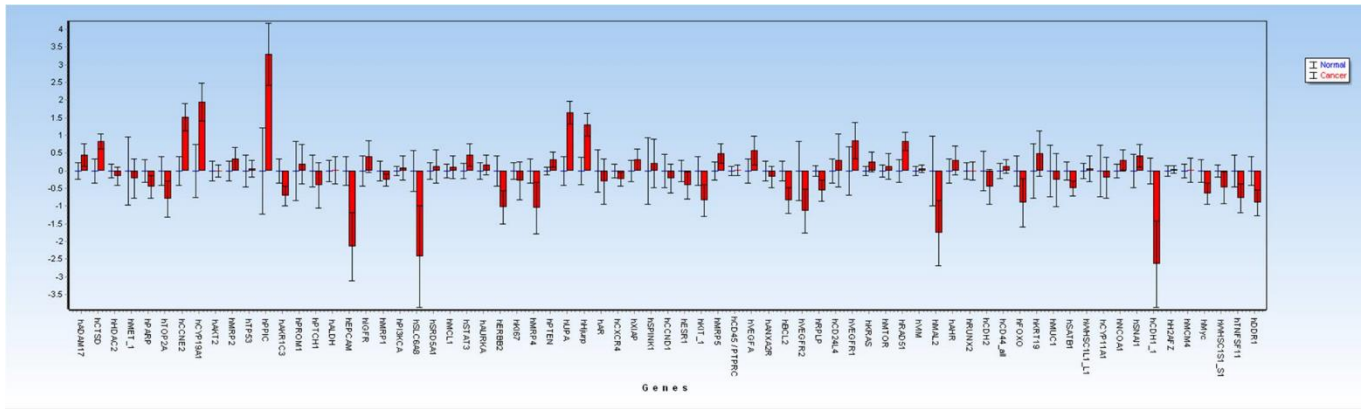
B.



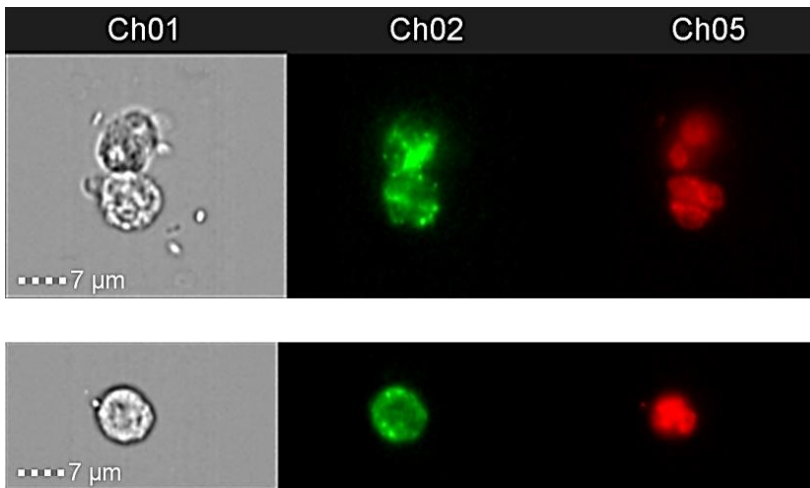
C.



**Figure S2. Panel A:** Diagrammatic representation of EMT dynamics between SKOV3 and PEO1. SKOV3 cells (**B**) and PEO1 cell (**C**) stained with WT1 (red; I), AE1/AE3 (green; II) and merged images (III).



**Figure S3.** Gene expression of ovarian cancer blood samples compared to controls. Data generated from ovarian cancer panels is plotted as a box plot chart for both ovarian cancer and controls. Expression of 28 genes found to be significantly ( $p$ -value $<0.05$ ) up or down-regulated in cancer cohort compared to controls.



**Figure S4.** Presence of CD34<sup>+</sup> (marker for CECs) cells in samples from two aEOC patients. Ch01: Brightfield; Ch02: CD34<sup>+</sup>; Ch05: DRAQ5.