

Supplementary Materials: Assessment of Super-Hydrophobic Textured Coatings on AA6082 Aluminum Alloy

Luigi Calabrese ^{1,*}, Amani Khaskhoussi ^{1,2}, Salvatore Patane ³ and Edoardo Proverbio ¹

¹ Department of Engineering, University of Messina, Contrada di Dio Sant'Agata, 98166 Messina, Italy; khaskhoussiamani105@gmail.com (A.K.); eproverbio@unime.it (E.P.)

² National Interuniversity Consortium of Materials Science and Technology, INSTM, Via Giuseppe Giusti 9, 50121 Firenze, Italy

³ Department of Mathematics and Computer Science, Physical Sciences and Earth Sciences, University of Messina, Viale F.S. D'Alcontres n. 31, 98166 Messina, Italy; patanes@unime.it

* Correspondence: lcalabrese@unime.it; Tel.: +39-090-6765544

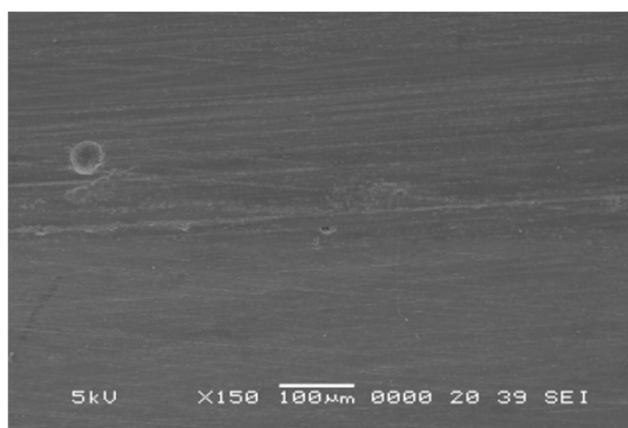


Figure S1. SEM image of as received surface

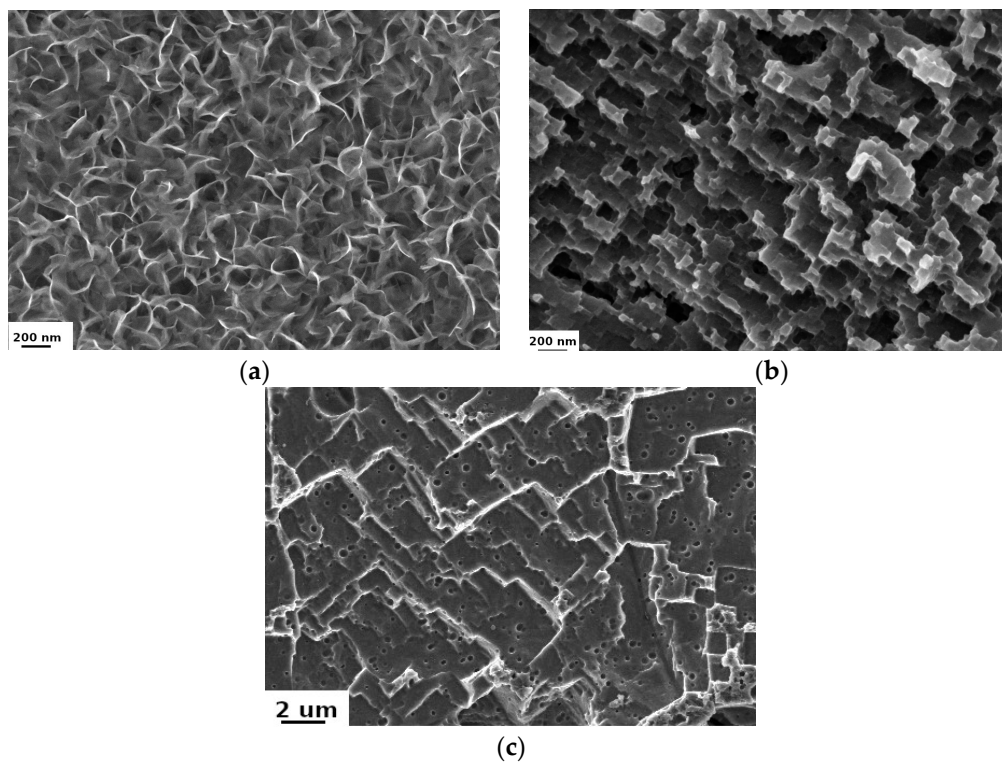


Figure S2. SEM image of (a) A-W, (b) A-F, and (c) A-N samples.

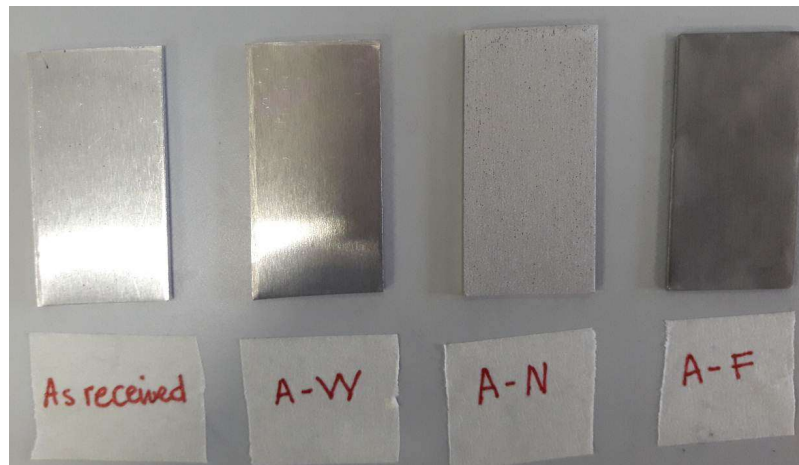


Figure S3. Photo of as received and after surface treatment aluminum alloy samples.

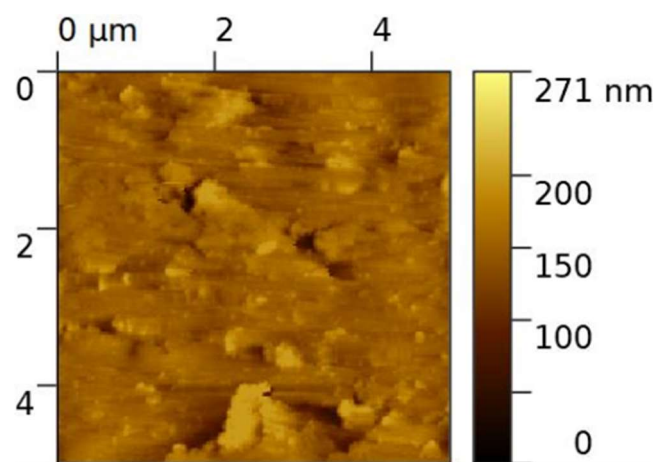


Figure S4. 2D AFM image of as received surface.

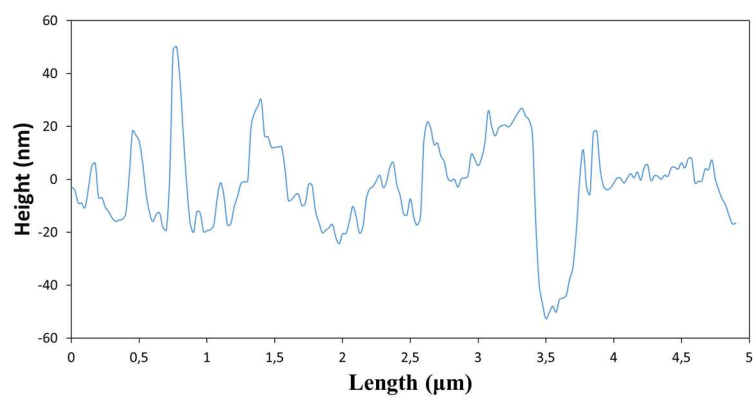


Figure S5. Reference roughness profile of as received surface.

