

Table S1. Systemic therapies used for long-term survivors.

Systemic therapies	
Individual therapies	Number of patients receiving (n=84)
Targeted agents	
Erlotinib	11
Gefitinib	13
Crizotinib	4
Trastuzumab	9
Sunitinib	5
Lenvatinib	3
Sorafenib	3
Osimertinib	3
Other agents	8 ^a
Immunomodulators	
IFN	3
Durvalimumab	3
Other immunotherapy (or immunomodulator) agents	6 ^b
Radioactive iodine	4
Hormonal therapy	
Tamoxifen	14
Letrozole	5
Exemestane	2
Others	
Platinum-based chemotherapy	31
Taxane-based chemotherapy	14
Cyclophosphamide based chemotherapy	21
Radioactive iodine	4
Number of lines of systemic therapy used^c	
Single	22
Multiple lines	55
Time of initiating therapy (targeted/ immunotherapy/ hormonal) (n=64)	
Prior to diagnosis of brain metastasis	26 (41%)
At the time of brain metastasis diagnosis (+/- 3 months)	30 (47%)
After the diagnosis of brain metastasis (> 3 months)	8 (12%)

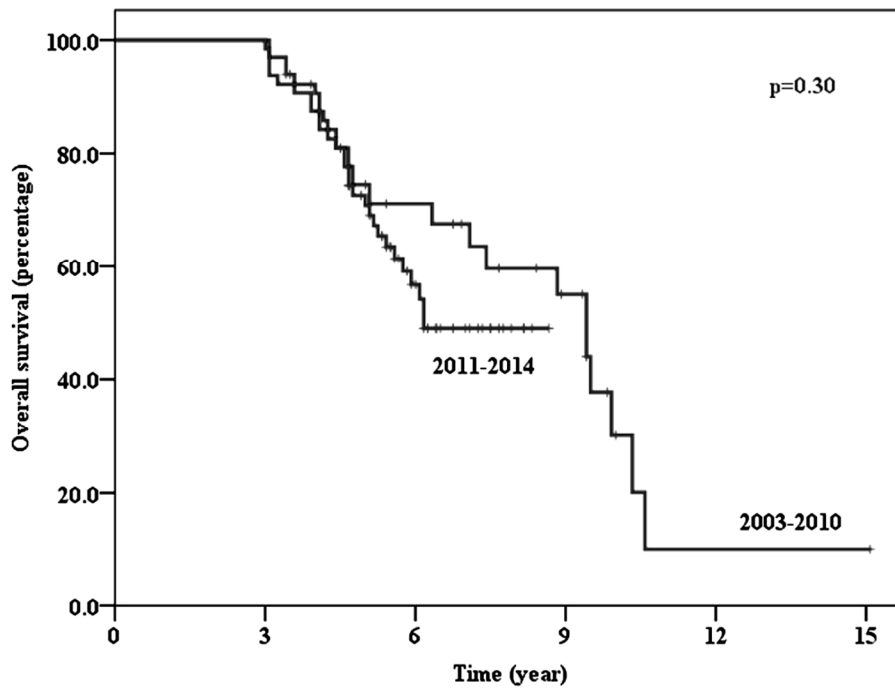
^a Other agents used include Afatinib, Brigatinib, Alectinib, Trametinib, Neratinib, Vandetanib, Pazopanib, Pertuzumab (1 each). ^b Other immunotherapy agents include-Pembrolizumab (2), Nivolumab (2), Ipilimumab (1), Sirolimus-1, Everolimus-1. ^c Following diagnosis of malignancy

Table S2. Correlation of different factors with intracranial disease-free survival and overall survival for the long-term survivors

Parameter	5-year intracranial disease-free survival	p-value	5-year Overall survival	p-value
Age < 60 years 60 years or more	37% 42%	0.73	69% 81%	0.31
Gender Male Female	38% 39%	0.83	52% 79%	0.04
ECOG 0-1 2 or more	41% 37%	0.74	76% 69%	0.33
No of metastasis Single Multiple	39% 37%	0.33	76% 65%	0.30
Site of metastasis Supratentorial Infratentorial Both	31% 59% 36%	0.04	70% 81% 64%	0.29
Primary Lung Breast Melanoma	32% 49% 60%	0.06	75% 66% 100%	0.35
Extracranial disease Controlled Uncontrolled	38% 39%	0.91	75% 70%	0.62
Diagnosis of BM Upfront Diagnosed later (> 3 months)	38% 39%	0.53	64% 77%	0.78
Systemic therapy Targeted/ HT/ Immunotherapy None of above	37% 41%	0.64	73% 71%	0.71
Timing of therapy^a Before brain metastasis During or after BM diagnosis	49% 29%	0.13	69% 76%	0.30
Surgery during BM diagnosis Yes No	29% 44%	0.47	62% 79%	0.85
SRS during BM diagnosis				

Yes	37%	0.80	71%	0.71
No	39%		74%	
WBRT during BM diagnosis				
Yes	39%	0.76	71%	0.90
No	38%		72%	

ECOG: Eastern cooperative oncology group; BM: Brain metastasis; HT: Hormonal therapy; SRS: Stereotactic radiosurgery; WBRT: Whole brain radiotherapy. ^a Targeted therapy, immunomodulators or hormonal therapy



Numbers at risk

2003-2010	33	33	20	11	1	1
2011-2014	64	64	23	0	0	0

Figure S1. Kaplan Meier survival plot showing a comparison of overall survival for patients diagnosed with brain metastasis during 2003-2010 and 2011-2014.