

Supplementary Materials: Survival Impact of Aggressive Treatment and PD-L1 Expression in Oligometastatic NSCLC

Camille Gauvin, Vimal Krishnan, Imane Kaci, Danh Tran-Thanh, Karine Bédard, Roula Albadine, Charles Leduc, Louis Gaboury, Normand Blais, Mustapha Tehfe, Bertrand Routy and Marie Florescu

Table 1. Treatment type and demographic characteristics of patients.

Demographic characteristics	Treatment			
	Aggressive at both sites (Group A) n=29 (%)	Primary site only (Group B1) n=4 (%)	Metastatic site only (Group B2) n=19 (%)	Palliative (Group B3) n=15 (%)
Sex				
Male	15 (52)	0 (0)	13 (68)	10 (67)
Smoking history				
Positive	29 (100)	3 (75)	19 (100)	14 (93)
Age at diagnosis				
<65	23 (79)	3 (75)	13 (8)	6 (40)
≥65	6 (21)	1 (25)	6 (32)	9 (60)
ECOG Score				
0	10 (35)	1 (25)	3 (16)	3 (20)
1	12 (41)	2 (50)	8 (42)	6 (40)
2	1 (4)	0 (0)	4 (21)	0 (0)
3	0 (0)	0 (0)	0 (0)	0 (0)
4	0 (0)	0 (0)	0 (0)	0 (0)
N/A	6 (21)	1 (25)	4 (21)	6 (40)

ECOG: Eastern Cooperative Oncology Group; N/A: not applicable.

Table S2. Survival of patients with aggressive or non-aggressive treatment classified by "Modified" Tumor Stage.

8 th IASLC Classification	Aggressive at Both Primary and Metastatic Sites <i>n</i> = 29 (%)	Non-Aggressive Treatments <i>n</i> = 38 (%)	<i>p</i> -value
Stage I, <i>n</i> = 18			
n	9 (31)	9 (24)	
OS (m)	42	16	0.316
PFS (m)	12	12	0.669
Stage II, <i>n</i> = 13			
n	7 (24)	6 (16)	
OS (m)	34	6	0.024
PFS (m)	Not reached	6	0.016
Stage III, <i>n</i> = 36			
n	13 (45)	23 (60)	
OS (m)	22	4	0.001
PFS (m)	19	3	0.003

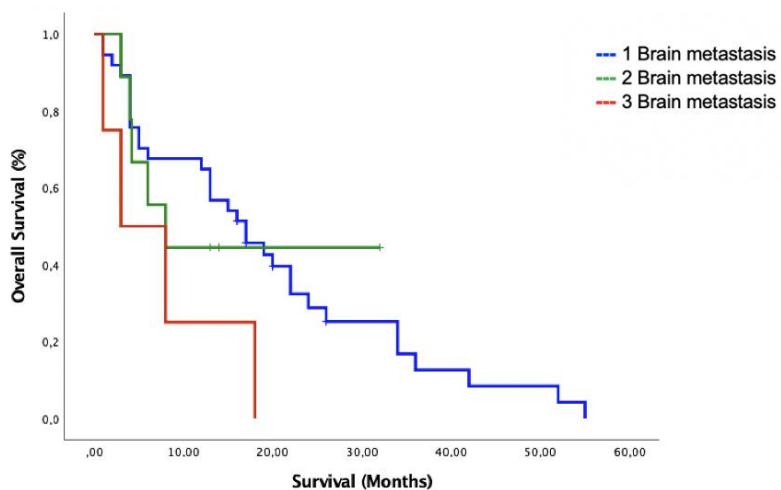
"Modified" Tumor Stage: refers to the combined stage T and N of the IASLC staging eighth edition; OS: overall survival; PFS: progression-free survival; (m): months.

Table 3. PD-L1 status and tumor site of subgroup of 39 patients.

PD-L1 Status	Lung Primary <i>n</i> (%)	Metastasis <i>n</i> (%)
Positive ($\geq 25\%$)	12 (55)	8 (30)
Negative ($< 25\%$)	10 (45)	19 (70)
Insufficient tissue	17	12

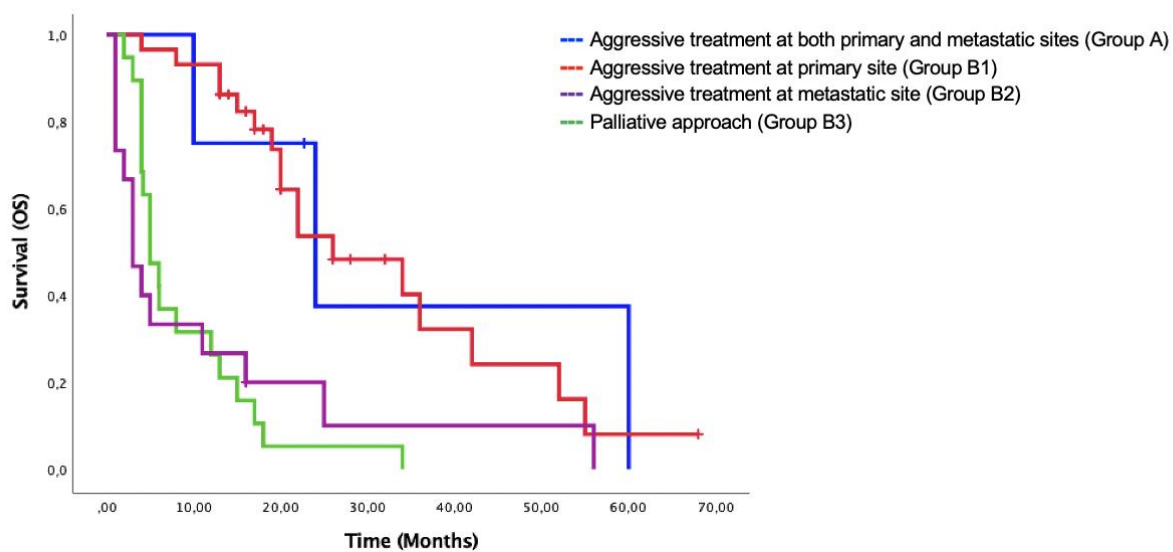
Table 4. PD-L1 concordance between primary and metastatic tissues in 10 patients.

Patient	Age	Sex	Progression-Free Survival (months)	Overall Survival (months)	PD-L1 (Primary Site)	PD-L1 (Metastasis)	Concordance
1	73	F	55	55	-	+	No
2	54	F	19	52	+	-	No
3	54	M	4	4	+	+	Yes
4	47	M	5.6	32	-	-	Yes
5	47	F	43	68	-	-	Yes
6	46	F	3.7	20	-	-	Yes
7	46	F	6	15	+	+	Yes
8	69	M	17.5	20	-	-	Yes
9	56	M	7.2	16	-	-	Yes
10	59	M	32	36	+	+	Yes
Median	54	-	12.4	26	-	-	80% (8/10)



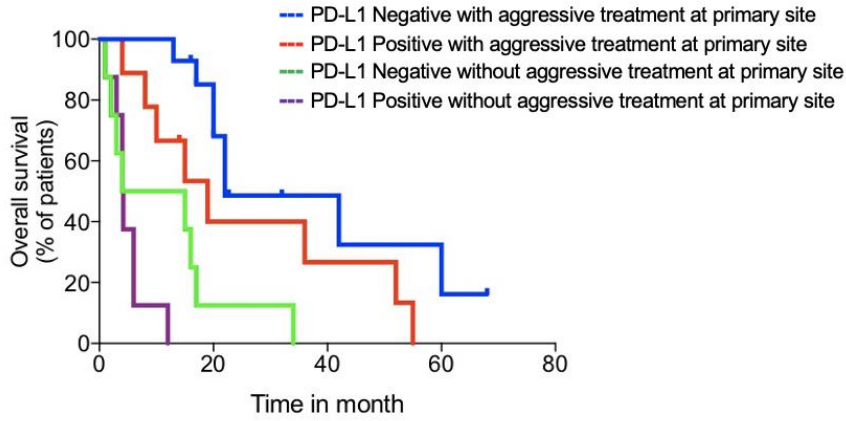
Number of Brain Metastasis	n (%) n total = 50	Median OS (months)	OS 1 year (%)	OS 2 year (%)
1	37 (74)	17	65	29
2	9 (18)	8	44	44
3	4 (8)	3	25	0
p-value = 0.121				

Figure S1. Overall survival based on the number of brain metastasis.



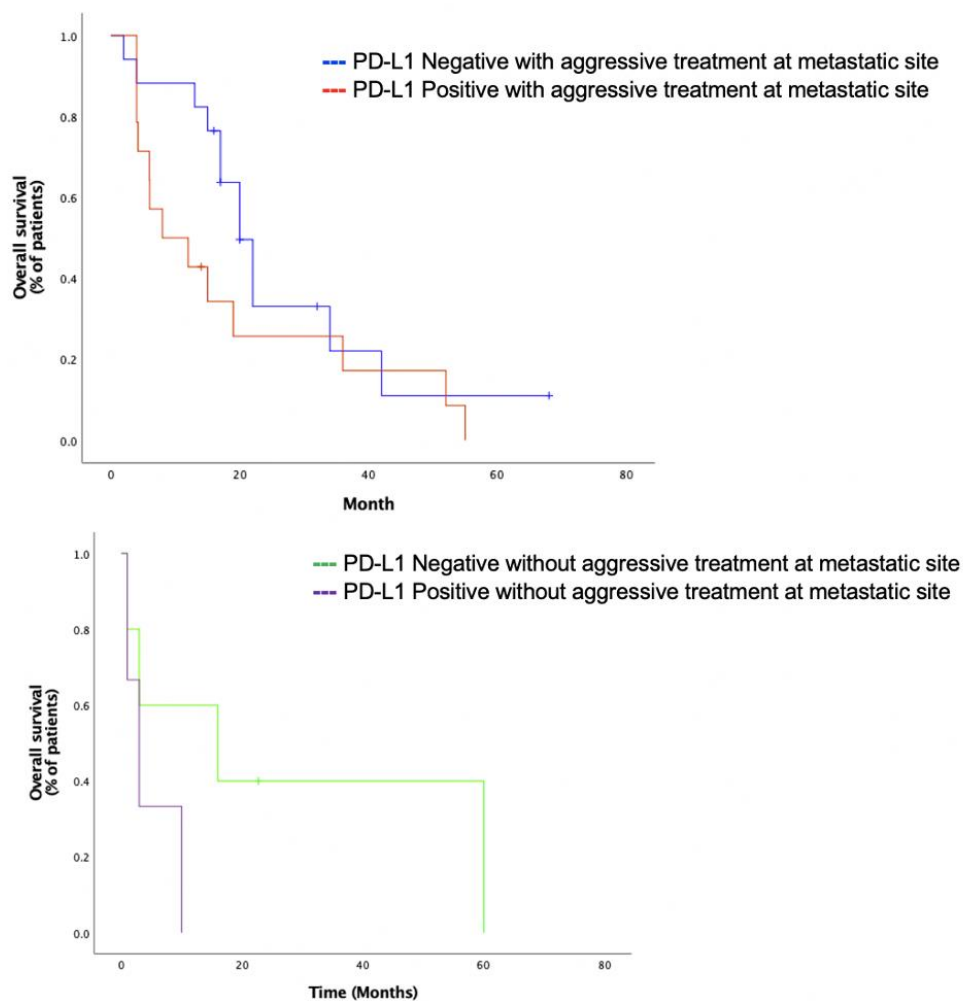
Treatment	n=67 (%)	mOS (months)	OS 2 years (%)
Aggressive treatment at both primary and metastatic sites (Group A)	29 (43)	26	54
Aggressive treatment at primary site (Group B1)	4 (6)	24	38
Aggressive treatment at metastatic site (Group B2)	19 (28)	5	5
Palliative approach (Group B3)	15 (22)	3	20
p-value= 0.0001			

Figure S2. Overall survival comparison between four different therapeutic approaches.



Treatment	mOS (months)	mPFS (months)
PD-L1 Negative (n = 22)		
Curative Tx (n = 14)	22	12.2
Palliative Tx (n = 8)	4	4
PD-L1 Positive (n = 17)		
Curative Tx (n = 9)	15	9.6
Palliative Tx (n = 8)	4	3
p-value	0.04	0.22

Figure S3. Overall survival of 39 patients stratified by treatment of primary site and PD-L1 status. Kaplan-Meier overall survival analysis of patients with PD-L1 status available comparing PD-L1 status and treatment approach at primary site.



Treatment	mOS (months)	mPFS (months)
PD-L1 Negative (n = 22)		
Curative Tx (n = 17)	20.0	12.2
Palliative Tx (n = 5)	16.0	14.7
PD-L1 Positive (n = 17)		
Curative Tx (n = 14)	8.0	6.0
Palliative Tx (n = 3)	3.0	3.0
p-value	0.07	0.15

Figure S4. Overall survival of 39 patients stratified by treatment of metastatic site and PD-L1 status. Kaplan-Meier overall survival analysis of patients with PD-L1 status available comparing PD-L1 status and treatment approach at metastatic site.

Publisher’s Note: MDPI stays neutral with regard to jurisdictional claims in published maps and institutional affiliations.



© 2020 by the authors. Licensee MDPI, Basel, Switzerland. This article is an open access article distributed under the terms and conditions of the Creative Commons Attribution (CC BY) license (<http://creativecommons.org/licenses/by/4.0/>).