

Figure S1. Maximum-likelihood tree of ITS sequence. Branches are labeled with bootstrap support values ($\geq 60\%$) based on 1000 replicates. The taxon name is followed by the strain number. The tree is rooted with *Botryobambusa fusicoccum* (MFLUCC 11-0143).

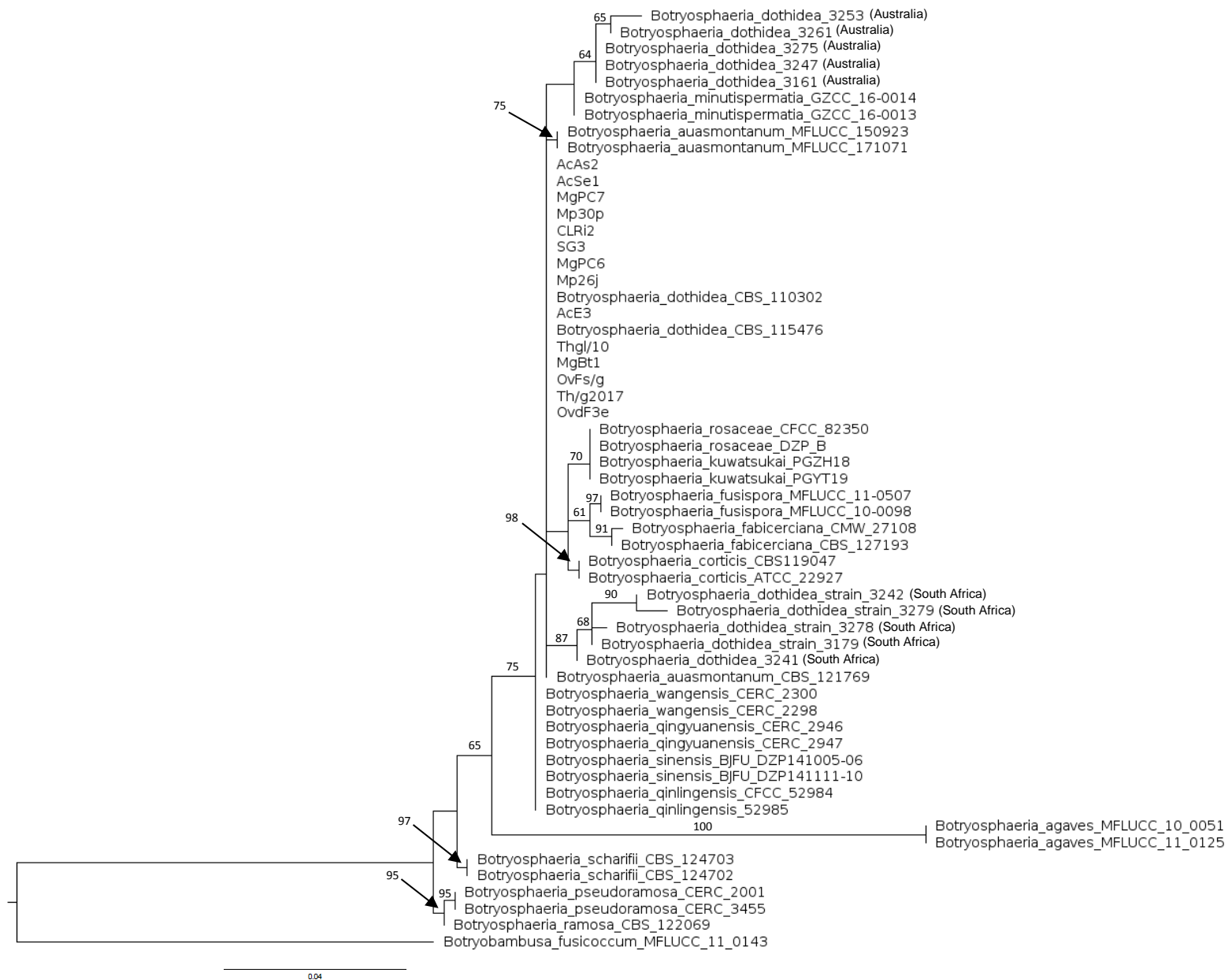
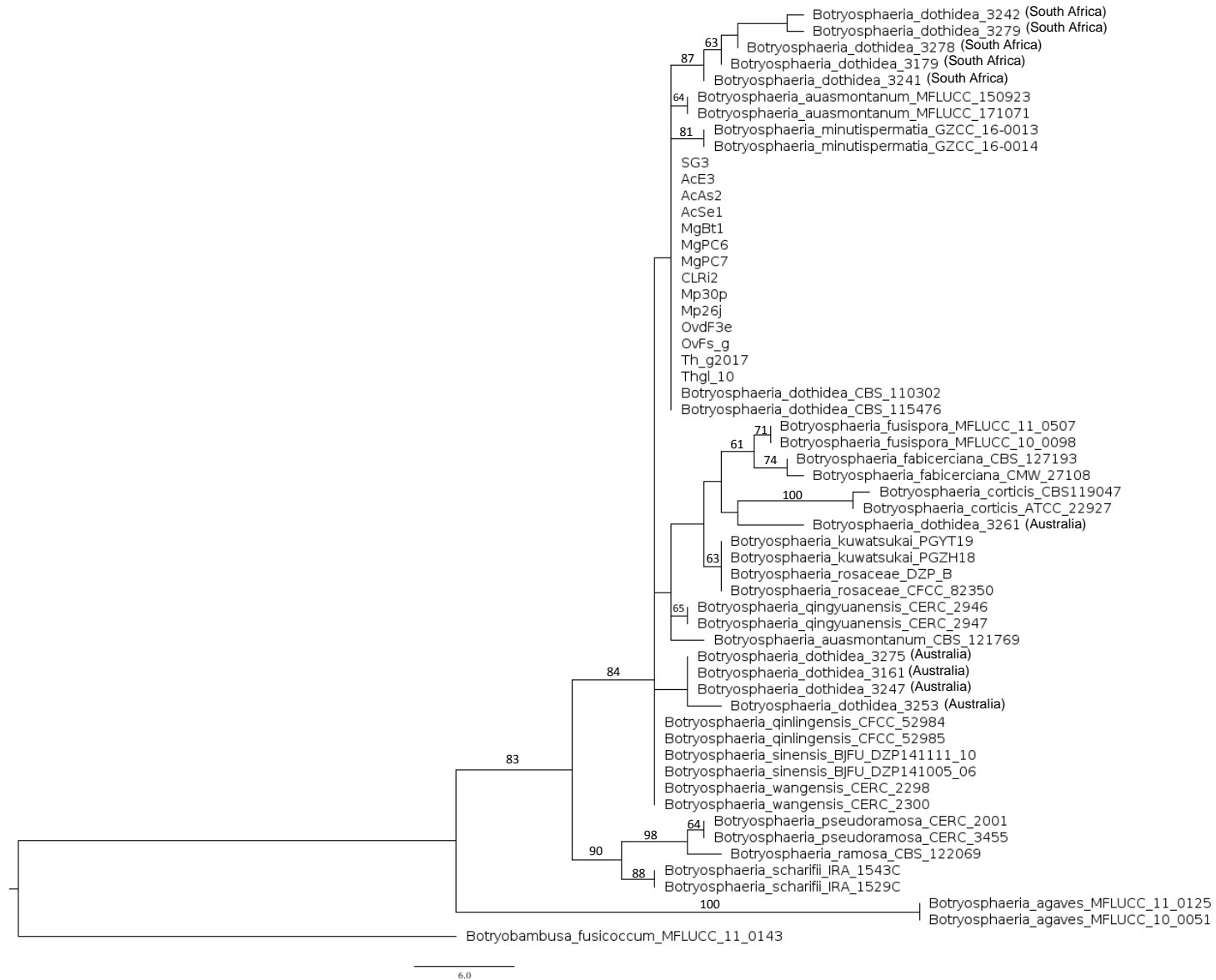


Figure S2. Maximum-likelihood tree of EF sequence. Branches are labeled with bootstrap support values ($\geq 60\%$) based on 1000 replicates. The taxon name is followed by the strain number. The tree is rooted with *Botryobambusa fusicoccum* (MFLUCC 11-0143).



6.0

Figure S3. One of the 1000 most parsimonious trees resulting from the analysis of concatenated ITS and TEF1 sequences. Maximum parsimony bootstrap values ($\geq 60\%$) based on 1000 replicates are shown on the branches. The tree is rooted with *Botryobambusa fusicoccum* (MFLUCC 11-0143).