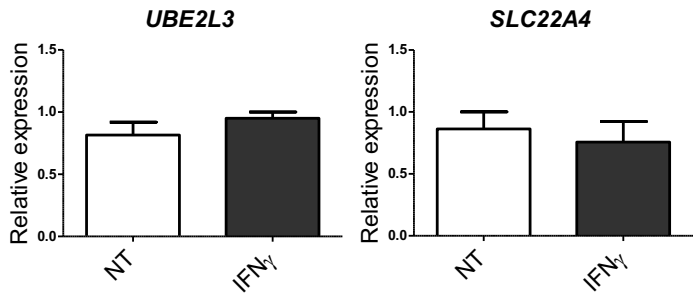
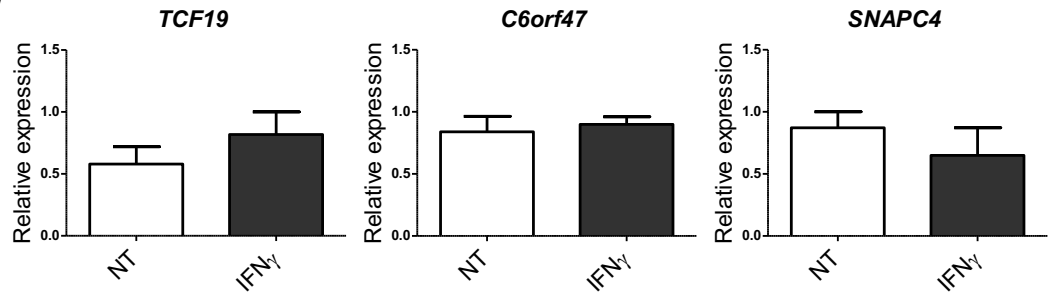
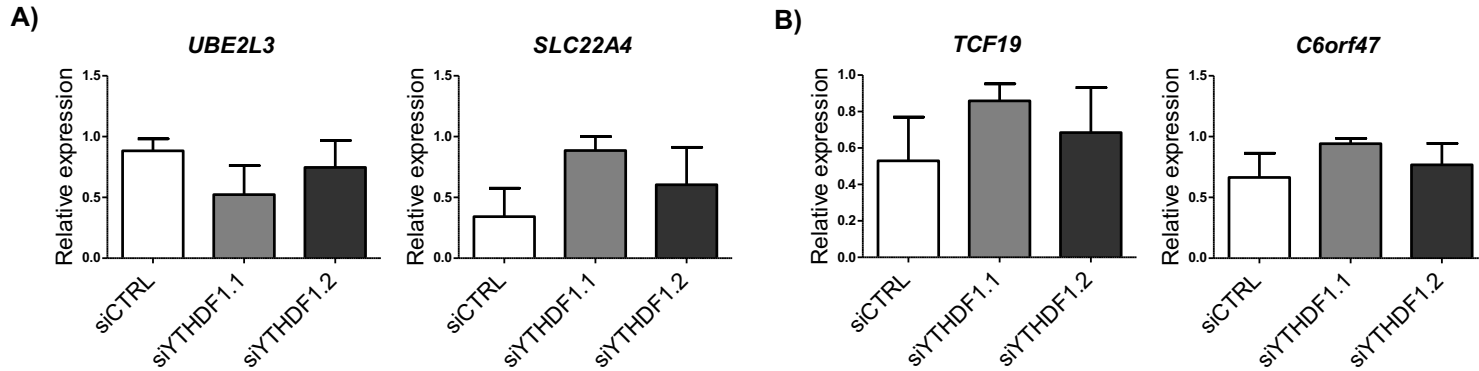


**Supplementary Figure 1.** Heatmaps of the differentially expressed genes harbouring a m6A-SNP A) CD and B) UC. Genes selected for further analyses are marked with an asterisk

**A)****B)**

**Supplementary Figure 2.** Expression analyses of A) CD and B) UC candidate genes after 4h IFN $\gamma$  treatment. Data is represented as the mean and standard error of 4 independent experiments.



**Supplementary Figure 3.** Expression analyses of A) CD and B) UC candidate genes after YTHDF1 silencing. Values are represented as the mean and standard error of 3 independent experiments.

**Supplementary table 1.** Information about differentially expressed genes harbouring m6A-SNPs. Selected candidate genes for UC are highlighted in blue and for CD in green.

Gene	SNP associated			Differentially expressed in		Concordant in	
	IBD	CD	UC	CD	UC	CD	UC
<i>ARIH2</i>	X				X		
<i>C6orf47</i>	X	X	X		X		YES
<i>GPSM1</i>	X				X		
<i>INPP5E</i>	X	X			X		
<i>IP6K1</i>	X	X			X		
<i>LIME1</i>	X	X			X		
<i>PMPCA</i>	X	X			X		
<i>QRICH1</i>	X				X		
<i>SLC22A4</i>	X	X		X		YES	
<i>SNAPC4</i>	X	X	X		X		YES
<i>TCF19</i>	X	X	X		X		YES
<i>UBE2L3</i>	X	X		X		YES	

**Supplementary table 2.** Specific primer pairs used for RT-QPCR expression analyses.

<b>Gene</b>	<b>Forward primers</b>	<b>Reverse primers</b>
<i>METTL3</i>	5'TCGAGAGCGAAATTTTTCAAC3'	5'GGAGATAGAGAGCCTTCTGAACC3'
<i>METTL14</i>	5'GAGTGTGTTTACGAAAATGGGGT3'	5'CCGTCTGTGCTACGCTTCA3'
<i>WTAP</i>	5'ACTGGCCTAAGACAGTCTGAAG3'	5'GTTGCTAGTCGCATTACAAGGA3'
<i>YTHDF1</i>	5'ACCTGTCCAGCTATTACCCG3'	5'TGGTGAGGTATGGAATCGGAG3'
<i>UBE2L3</i>	5'AGCTTGAAGAAATCCGCAA3'	5'TGTGATCTTCGGTGGTTTGA3'
<i>SLC22A4</i>	5'GCCCAGGCGTTATATCATAGC3'	5'GCATGACCAGACCAATGGATAAG3'
<i>TCF19</i>	5' TCGGAGGAAATCTGTTCACC3'	5' GAGCGCTCACTGGGTACTTC3'
<i>C6orf47</i>	5'TGTGGGGCATCCCAAGACTAA3'	5'GCTCCCTAGCTGCTCAACTT3'
<i>SNAPC4</i>	5' GCAAGGAGTGGACAGAGGAG3'	5' CGTATTTGGCAACAGCTTGA3'