

Article

Maturation in *Corymbia torelliana* × *C. citriodora* Stock Plants: Effects of Pruning Height on Shoot Production, Adventitious Rooting Capacity, Stem Anatomy, and Auxin and Abscisic Acid Concentrations

Ivar Wendling ^{1,*}, Paul M. Warburton ² and Stephen J. Trueman ³

¹ Embrapa Florestas, Colombo, PR 83411-00, Brazil

² Commonwealth Scientific and Industrial Research Organisation (CSIRO), Queensland Bioscience Precinct, St Lucia, QLD 4067, Australia; E-Mail: paulwarb66@gmail.com

³ Genecology Research Centre, University of the Sunshine Coast, Maroochydore DC, QLD 4558, Australia; E-Mail: strueman@usc.edu.au

* Author to whom correspondence should be addressed; E-Mail: ivar.wendling@embrapa.br; Tel.: +55-41-3675-5729; Fax: +55-41-3675-5601.

Academic Editors: Jarmo K. Holopainen and Eric J. Jokela

Received: 14 August 2015 / Accepted: 10 October 2015 / Published: 16 October 2015

Abstract: Repeated pruning of stock plants is a common approach to delaying maturation and maintaining the propagation ability of cuttings, but little is known about the hormonal or anatomical basis for this phenomenon. We tested the effect of two different stock-plant pruning heights (15 cm and 30 cm) on shoot production, rooting capacity and rooted cutting vigour of six clones of the eucalypt *Corymbia torelliana* × *C. citriodora*. We determined whether differences in rooting potential were related to indole-3-acetic (IAA) and abscisic acid (ABA) concentrations, or the degree of lignification or sclerification, of the cuttings. Maintaining stock plants at 15 cm height sometimes reduced the production of stem cuttings. However, it often increased the ensuing percentage of cuttings that formed roots, with mean rooting across all clones increasing from 30%–53%. Therefore, the number of rooted cuttings produced by short stock plants was similar to, or higher than, the number produced by tall stock plants. Cuttings from shorter stock plants had faster root elongation and occasionally greater root dry mass, shoot dry mass or shoot height than cuttings from tall stock plants. These differences in rooting potential were generally not related to differences in IAA or ABA concentrations of the cuttings or to differences in their stem anatomy. Pruning at the lower height was more effective in maintaining clonal juvenility, supporting previous

findings that stock plant maturation is a limiting factor in clonal propagation of *Corymbia torelliana* × *C. citriodora*.

Keywords: adventitious roots; *Eucalyptus*; juvenility; plant hormones; propagation

1. Introduction

Clonal forestry comprises the process of clonal timber production from candidate plus-tree selection, germplasm capture and clonal field testing through to clonal tree propagation, plantation establishment and site management [1]. Clonal tree propagation, as part of a clonal forestry program, aims to maximize productivity, quality and uniformity in plantations by capturing the total genetic variance [2,3]. However, maturation of clonal stock plants can limit the adventitious rooting of cuttings and reduce the subsequent growth of plantation trees [4–6]. Maturation-related loss of rooting competence is a major limiting factor in woody plant propagation [7,8] and, consequently, in the establishment of clonal forestry plantations.

Clonal selection typically occurs when trees are approaching their mature phase, and so efficient clonal propagation relies on the ability to produce rejuvenated stock plants of the selected clones or to maintain clonal archives of juvenile stock plants throughout the period of clonal field testing [9,10]. One of the most common strategies to maintain juvenility and delay maturation is to repeatedly prune the stock plants, or serially propagate cuttings from the stock plants, at a low height [1,11,12]. Even then, propagation ability within clones can vary because of maturation- or morphologically-related topophytic effects; *i.e.*, positional effects within the stock plant on the subsequent rooting and growth of cuttings [2,5]. Topophytic effects can occur at very fine scales; *e.g.*, rooting capacity of cuttings varies from the first to the fifteenth node of *Eucalyptus grandis* W.Hill seedlings [13] and rooting capacity of *in vitro* shoots varies from the first to the fifth node of *Corymbia torelliana* (F.Muell.) K.D.Hill & L.A.S.Johnson × *C. citriodora* (Hook.) K.D.Hill & L.A.S.Johnson seedlings [14].

The hormone, indole-3-acetic acid (IAA), is involved in regulating many aspects of plant development from embryogenesis to senescence, and is one of the most important hormones involved in root initiation [15,16]. Another hormone, abscisic acid (ABA), affects root elongation, lateral root formation [17] and the biosynthesis and activity of IAA [18]. IAA and ABA may interact in regulating rooting potential [19]. However, we have demonstrated recently that topophytic effects during the rooting and vigour of *C. torelliana* × *C. citriodora* cuttings are related to the degree of lignification and sclerification of the stem rather than the concentrations of IAA or ABA in the cuttings [20]. That research compared dual-node cuttings from the first 10 nodes of juvenile seedlings (*i.e.*, ortets). However, cuttings are normally harvested from larger stock plants that have been raised from cuttings (*i.e.*, ramets). Stock plants of *Eucalyptus* and *Corymbia* in Australia are often maintained by pruning at ~30-cm height [21–24] whereas eucalypt nurseries in Brazil use shorter stock plants to maintain clonal juvenility [1,2,25–28].

In this study, we compared the production, rooting and vigour of cuttings from *C. torelliana* × *C. citriodora* ramet stock plants that were maintained at two different heights (15 cm and 30 cm). We assessed whether differences in propagation potential were related to differences in IAA and ABA concentrations or stem anatomy. An understanding of the extent of maturation effects in eucalypt stock

plants, and their underlying hormonal or anatomical bases, will assist in developing efficient propagation systems for establishing clonal plantations.

2. Experimental Section

2.1. Stock Plant and Cutting Production

Six clones of *C. torelliana* × *C. citriodora* subsp. *variegata* with varying rooting capacity were selected from our previous micropropagation and stock plant studies [14,29,30]. Briefly, the clones were produced by germinating seeds of a full-sibling family (1CT2-013 × 1CV2-109) *in vitro* and proliferating shoots in media containing half- or full-strength Murashige and Skoog medium [14,29]. Shoots were converted into plantlets after 18 months, and these were maintained as *ex vitro* stock plants in 1.6-L pots for 9 months by pruning at a height of ~30 cm. Fresh rooted cuttings were then produced from the *ex vitro* stock plants and these were raised as nursery stock plants in 1.6-L pots for a further 9 months [30]. The stock plants of each clone were then divided into two treatments by pruning at one of two different heights: “Tall” (pruned at ~30 cm) or “Short” (pruned at ~15 cm). The experiment comprised eight stock plants per treatment per clone, spaced at 26 plants per m² on a glasshouse bench at the University of the Sunshine Coast, Australia (26°43'01" S 153°03'44" E). The potting mixture was the eucalypt seedling mix described previously [22,23]. Each stock plant received a weekly application of 150 mL of Flowfeed BM7 foliar fertilizer (Growforce, Acacia Ridge, Australia) at a rate of 10 g fertilizer L⁻¹.

Cuttings were harvested from each stock plant on 12 occasions over the following 6 months. Three-node cuttings were prepared by removing the shoot apex, dissecting the shoot into cuttings of 3–5 cm length, and pruning 50% of the length of each leaf from each cutting. The cuttings were not treated with auxin. The cuttings were set in 70 mL plastic Hyco tubes containing a 75/25 (v/v) mixture of perlite and shredded pine bark, supplemented with 3 kg of 8–9 month slow-release Osmocote™ fertilizer and 1 kg of gypsum per m³ [22,23]. The cuttings were placed in a translucent white polyethylene chamber and misted for 10 s every 10 min from 0600–1800 h. The cuttings remained under mist irrigation for up to 60 days, depending on the season.

Cuttings from harvest 2 (setting 1: “S1”, 10 July 2012) and harvest 12 (setting 2: “S2”, 20 December 2012) were used to assess root protrusion from the propagation tubes, percentage of cuttings that formed roots, and the growth of rooted cuttings. The percentage of tubes with protruding roots was recorded every 4 days from 36–60 days post-setting in S1 and from 16–36 days post-setting in S2. The percentage of cuttings with roots, as well as the root dry mass, shoot dry mass, root:shoot ratio and height of rooted cuttings, were measured at 60 days post-setting in S1 and 40 days post-setting in S2. The number of cuttings produced per stock plant (stock plant productivity) was recorded at each of the 12 harvests and converted into cutting production per m² per month for comparison with other studies. Plant multiplication rate for S1 and S2 was determined by multiplying stock plant productivity × the percentage of cuttings that formed roots.

2.2. Hormone Analyses

A sample of cuttings of the same morphology was harvested concurrently in both S1 and S2 for hormone analysis. Three replicates of four cuttings per clone were snap-frozen in liquid nitrogen and

then freeze dried for 36 h prior to storage at $-80\text{ }^{\circ}\text{C}$. Plant material was then ground to a powder using a Mixer Mill MM200 tissue homogenizer (Retsch, Haan, Germany) and weighed into a 5 mL vial. Extraction and purification was adapted from a previous method [31]. Ground material was suspended in 70% (v/v) methanol ($15\text{ mL}\cdot\text{g}^{-1}$) with $0.1\text{ mg}\cdot\text{L}^{-1}$ butylated hydroxytoluene (BHT). Then, $10\text{ }\mu\text{L}$ of 10^{-5} mol per 10 mL IAA D7 (indole-2,4,5,6,7-d5-3-acetic-2,2-d2 acid) (Sigma-Aldrich, Sydney, Australia) was added as a deuterated internal standard to a final quantity of 10^{-8} mol to corroborate chromatographic retention times and quantification.

The vials were flushed with N_2 gas and stored overnight at $4\text{ }^{\circ}\text{C}$. The supernatant was transferred into a test tube, centrifuged for 5 min, transferred to a 25 mL round bottom flask and evaporated under vacuum to an aqueous residue. The solution pH was adjusted to 8–9 with 0.5 M sodium hydroxide and the water layer was extracted twice with 1 mL ethyl acetate. The pH was readjusted to 2.5 with 0.5 M hydrochloric acid, and the solution was partitioned three times into 1 mL diethyl ether with $0.1\text{ mg}\cdot\text{mL}^{-1}$ BHT, passed through anhydrous sodium sulfate, and evaporated under N_2 gas to dryness. The residue was dissolved in 300 μL dichloromethane, 15 μL of derivatising agent [*N*-(*tert*-butyldimethylsilyl)-*N*-methyltrifluoroacetamide, with 1% TBDMSCI] (Sigma-Aldrich, Sydney, Australia) was added, and the sample was stored for 1 h at $65\text{ }^{\circ}\text{C}$.

The sample was analyzed by GC-MS (Clarus 580 and Clarus SQ8S, Perkin Elmer) and the hormone concentrations calculated in $\text{ng}\cdot\text{g}^{-1}$ dry mass. The compound signals were monitored at *m/z* 239, 232 and 190 with retention times around 14.47, 14.55 and 19.57 min for IAA D7, natural IAA and ABA, respectively. Peak identification was based on retention time and mass spectra. Spiking of the sample with the standard solution of IAA D7 was used to determine the peak area ratio for each hormone and to calculate the natural hormone concentrations in the samples.

2.3. Stem Anatomy

An additional sample of cuttings of the same morphology was harvested concurrently in both S1 and S2 for anatomical observation. The cuttings were processed using a method adapted from our previous research [32]. Transverse stem sections of 5 mm length were collected from the base of cuttings, fixed in a solution of 3% glutaraldehyde and 0.1 M phosphate buffer, and stored at $4\text{ }^{\circ}\text{C}$. The samples were then washed in 0.1 M phosphate buffer and processed under vacuum in a Shandon Excelsior ES Tissue Processor (Thermo Electron Corp., Marietta, OH, USA). Dehydration in alcohol was in six stages of 1 h each, followed by clearing in xylene in three 1-h stages, and infiltration with wax for 2 h. The samples were transverse sectioned at $8\text{ }\mu\text{m}$ using a UYD-335 Automated Microtome (ProSciTech, Thuringowa, Australia), stained with safranin and fast green [33], and mounted with Permout medium (ProSciTech). Sections were examined with an Eclipse E200 light microscope (Nikon, Sydney, Australia).

2.4. Experimental Design and Statistical Analyses

Ten cuttings were allocated randomly to each of five replicates per treatment per clone in both settings (S1 and S2). Data were analyzed by 1-way ANOVA within treatments and *t*-test within clones because extensive interactions between clone and treatment were detected by 2-way ANOVA. Protruding roots and dry mass data were log transformed and rooting data was square root–log transformed when variance was heterogeneous. Post-hoc Tukey's Honestly Significant Difference (HSD) tests were performed only

when significant differences ($p < 0.05$) among clones were detected by ANOVA. Pearson's correlations were also calculated between all variables in each setting.

3. Results

Cuttings from short stock plants often had faster root protrusion from the propagation tubes than cuttings from tall stock plants (Table 1). Cuttings from short stock plants also often produced adventitious roots at a higher frequency than cuttings from tall stock plants (Table 2). Mean rooting percentages (across all clones) from short stock plants (53.3% and 52.3% for S1 and S2, respectively) were higher than from tall stock plants (30.0% and 30.5% for S1 and S2, respectively) (Table 2). Pruning stock plants at the low height accelerated root protrusion and increased rooting percentages in low-, medium-, and high-rooting clones (Tables 1 and 2). The correlations between root protrusion and final rooting percentage were significant ($p < 0.05$) at all evaluation times in both settings; *i.e.*, from 36–60 days and from 16–36 days post-setting in S1 and S2, respectively.

Table 1. Effect of stock plant pruning height (Tall, 30 cm; Short, 15 cm) on the percentage of *Corymbia torelliana* × *C. citriodora* cuttings with roots protruding from the base of the propagation tube in setting 1 and setting 2. Means with different letters within a time point are significantly different (*t*-test; $p < 0.05$; $n = 5$).

Clone	Pruning Height	Setting 1							Setting 2						
		Time after Setting (days)													
		36	40	44	48	52	56	60	16	20	24	28	32	36	
29	Tall	0 a	0 a	0 a	0 b	4 b	4 b	6 b	0 a	2 a	2 a	4 a	4 a	4 b	
	Short	0 a	8 a	12 a	18 a	24 a	24 a	26 a	2 a	4 a	8 a	10 a	16 a	22 a	
67	Tall	2 a	8 a	10 a	12 b	16 b	16 b	16 b	12 a	14 a	18 b	26 a	34 a	36 a	
	Short	0 a	10 a	16 a	26 a	32 a	32 a	34 a	20 a	34 a	42 a	42 a	42 a	42 a	
83	Tall	0 a	2 a	4 a	6 a	14 a	14 a	14 a	0 b	0 b	14 a	16 a	22 a	22 a	
	Short	0 a	0 a	6 a	12 a	22 a	22 a	26 a	20 a	22 a	22 a	26 a	26 a	26 a	
156	Tall	4 a	6 a	22 a	40 a	50 a	50 a	54 a	0 b	2 b	12 b	16 b	26 b	32 b	
	Short	6 a	12 a	22 a	30 a	36 a	36 a	42 a	30 a	58 a	68 a	72 a	74 a	74 a	
160	Tall	0 a	0 a	0 b	0 b	4 b	4 b	4 b	4 b	4 b	10 b	10 b	10 b	18 b	
	Short	6 a	10 a	14 a	22 a	28 a	28 a	28 a	20 a	40 a	40 a	44 a	50 a	50 a	
163	Tall	4 a	12 a	26 a	28 a	40 a	40 a	40 a	18 a	28 b	30 b	34 b	34 b	34 a	
	Short	8 a	16 a	30 a	40 a	58 a	58 a	60 a	34 a	48 a	48 a	52 a	54 a	54 a	

In most cases, the pruning height of stock plants did not affect the shoot dry mass, root dry mass or height of rooted cuttings (data not presented). However, short stock plants of clone 29 produced rooted cuttings with higher root dry mass than did tall stock plants in S1, short stock plants of clones 29, 163 and 160 produced rooted cuttings with higher shoot dry mass than did tall stock plants in S1, and short stock plants of clone 83 produced taller rooted cuttings than did tall stock plants in S2. The pruning height of stock plants generally did not affect the root:shoot ratio (RSR) of rooted cuttings, although cuttings from short stock plants of clones 29 and 160 in S1 had lower RSR than cuttings from tall stock plants (Table 3).

Table 2. Effect of stock plant pruning height (Tall, 30 cm; Short, 15 cm) on the percentage of *Corymbia torelliana* × *C. citriodora* cuttings with adventitious roots in setting 1 and setting 2. Means (\pm SE) with different capital letters within each pruning treatment, and different lower case letters within each clone, are significantly different (ANOVA and HSD test, or *t*-test; $p < 0.05$; $n = 5$).

Clone	Pruning Height	Setting 1	Setting 2
29	Tall	6 \pm 2 Db	8 \pm 4 Db
	Short	26 \pm 5 Ca	22 \pm 4 Ca
67	Tall	20 \pm 4 ABb	40 \pm 3 ABb
	Short	54 \pm 9 Ba	54 \pm 2 Ba
83	Tall	20 \pm 3 BCa	28 \pm 5 BCa
	Short	34 \pm 7 Ca	36 \pm 2 Ca
156	Tall	74 \pm 5 Ab	54 \pm 7 Ab
	Short	82 \pm 4 Aa	86 \pm 2 Aa
160	Tall	6 \pm 2 CDb	17 \pm 1 CDb
	Short	50 \pm 4 Ba	60 \pm 3 Ba
163	Tall	54 \pm 7 Bb	36 \pm 2 Bb
	Short	74 \pm 6 Ba	56 \pm 5 Ba
Mean	Tall	30.0	30.5
	Short	53.3	52.3

Table 3. Effect of stock plant pruning height (Tall, 30 cm; Short, 15 cm) on root:shoot dry mass ratio of *Corymbia torelliana* × *C. citriodora* rooted cuttings in setting 1 and setting 2. Means (\pm SE) with different capital letters within each pruning treatment, and different lower case letters within each clone, are significantly different (ANOVA and HSD test, or *t*-test; $p < 0.05$; $n = 5$).

Clone	Pruning Height	Setting 1	Setting 2
29	Tall	0.30 \pm 0.01 Aa	0.16 \pm 0.00 Ba
	Short	0.24 \pm 0.02 Ab	0.15 \pm 0.01 Aa
67	Tall	0.22 \pm 0.04 Aa	0.17 \pm 0.01 Ba
	Short	0.21 \pm 0.02 Aa	0.20 \pm 0.04 Aa
83	Tall	0.24 \pm 0.02 Aa	0.24 \pm 0.03Aba
	Short	0.23 \pm 0.03 Aa	0.22 \pm 0.03 Aa
156	Tall	0.24 \pm 0.03 Aa	0.19 \pm 0.02 Ba
	Short	0.23 \pm 0.02 Aa	0.24 \pm 0.04 Aa
160	Tall	0.31 \pm 0.03 Aa	0.30 \pm 0.03 Aa
	Short	0.18 \pm 0.03 Ab	0.28 \pm 0.04 Aa
163	Tall	0.23 \pm 0.02 Aa	0.20 \pm 0.02 Ba
	Short	0.20 \pm 0.02 Aa	0.19 \pm 0.00 Aa
Mean	Tall	0.26	0.21
	Short	0.21	0.21

Stock plant productivity ranged from 141–1433 cuttings · m⁻² · month⁻¹ depending on the clone, pruning height and harvest time, with productivity increasing across the six-month experimental period (Table 4).

Short stock plants of clones 163, 156 and 67 had lower productivity than tall stock plants, whereas short stock plants of clone 160 had higher productivity than tall stock plants, at several harvest times (Table 4). Short stock plants of clones 29 and 83 sometimes had lower or higher productivity than tall stock plants, depending on the harvest time. Stock plant productivity was correlated ($p < 0.05$) with ABA concentration at the second harvest time (*i.e.*, S1) and with IAA concentration at the twelfth harvest time (*i.e.*, S2), but it was not correlated significantly with other variables.

Table 4. Effect of stock plant pruning height (Tall, 30 cm; Short, 15 cm) on *Corymbia torelliana* × *C. citriodora* stock plant productivity (cuttings·m⁻²·month⁻¹). Means with different letters within each collection are significantly different (*t*-test; $p < 0.05$; $n = 8$ stock plants).

Clone	Pruning Height	Collection												Mean
		1	2	3	4	5	6	7	8	9	10	11	12	
29	Tall	243 a	245 a	298 a	354 b	658 a	548 b	919 a	589 a	897 a	851 a	858 a	1,170 a	560
	Short	177 b	226 a	201 b	533 a	423 b	699 a	533 b	741 a	780 a	824 a	692 b	1,160 a	514
67	Tall	259 a	440 a	255 a	642 a	580 a	733 a	793 a	605 a	917 a	1,081 a	1,190 a	1,277 a	631
	Short	141 b	209 b	154 b	488 b	474 b	499 b	676 a	565 a	680 b	648 b	903 b	1,070 b	453
83	Tall	141 b	412 a	252 a	660 a	557 a	627 a	867 a	676 a	728 a	922 a	1,248 a	1,307 a	584
	Short	185 a	245 b	217 a	631 a	460 a	695 a	559 b	741 a	780 a	1,010 a	917 b	936 b	552
156	Tall	262 a	348 a	293 a	677 a	571 a	790 a	787 a	646 a	713 a	891 a	925 a	1,426 a	598
	Short	280 a	256 a	192 b	568 a	562 a	483 b	650 a	566 a	614 a	895 a	644 b	1,151 b	507
160	Tall	151 b	226 a	142 b	373 a	418 a	421 a	426 b	478 a	577 a	425 b	686 a	655 b	364
	Short	190 a	213 a	226 a	433 a	324 a	494 a	594 a	468 a	669 a	770 a	657 a	869 a	438
163	Tall	277 a	323 a	396 a	505 a	761 a	916 a	923 a	813 a	1,073 a	1,108 a	1,112 a	1,433 a	709
	Short	151 b	153 b	230 b	459 a	450 b	431 b	713 a	646 a	992 a	800 b	1,125 a	1,237 a	503
Mean	Tall	222	332	273	535	591	672	786	635	817	880	1,003	1,211	574
	Short	187	217	203	518	449	550	621	621	752	825	823	1,070	494

Multiplication rate (*i.e.*, stock plant productivity × rooting percentage) generally did not differ significantly between short and tall stock plants (Table 5). However, short stock plants of clone 29 provided a higher multiplication rate than tall stock plants in S1, and short stock plants of clone 160 provided a higher multiplication rate than tall stock plants in both S1 and S2. Multiplication rates ranged from 15–246 rooted cuttings m⁻²·month⁻¹ in S1 and from 106–885 rooted cuttings m⁻²·month⁻¹ in S2, depending on the clone. Multiplication rate was correlated ($p < 0.05$) with ABA concentration at the second harvest time (*i.e.*, S1), with root dry mass at the twelfth harvest time (*i.e.*, S2) and with root protrusion at both harvest times (S1 and S2), but it was not correlated significantly with other variables.

The pruning height of stock plants often affected the IAA or ABA concentration of *C. torelliana* × *C. citriodora* cuttings, although the effects varied between clones and settings (Table 6). Cuttings from short stock plants of clones 29 and 83 had lower IAA concentrations than cuttings from tall stock plants in S1, whereas cuttings from short stock plants of clones 163, 83 and 156 had higher IAA concentrations than cuttings from tall stock plants in S2. Mean IAA concentrations ranged from 331–771 ng·g⁻¹ dry mass in S1 and from 224–445 ng·g⁻¹ dry mass in S2. Cuttings from short stock plants of clones 83 and 67 in S1 and clone 67 in S2 had lower ABA concentrations than cuttings from tall stock plants, whereas cuttings from short stock plants of clone 160 in S1 and clones 163 and 156 in S2 had higher ABA

concentrations than cuttings from tall stock plants. Mean ABA concentrations ranged from 88–345 ng·g⁻¹ dry mass in S1 and from 99–329 ng·g⁻¹ dry mass in S2 (Table 6). IAA and ABA concentrations were correlated significantly ($p < 0.05$) with each other in S1 but not in S2. Rooting characteristics and endogenous hormone concentrations were not correlated with each other in either setting (S1 or S2).

Table 5. Effect of stock plant pruning height (Tall, 30 cm; Short, 15 cm) on multiplication rate (rooted cuttings m⁻²·month⁻¹) of *Corymbia torelliana* × *C. citriodora* clones in setting 1 and setting 2. Means with different letters within each clone are significantly different (t -test; $p < 0.05$).

Clone	Pruning Height	Setting 1	Setting 2
29	Tall	14.7 b	93.6 a
	Short	58.7 a	255.3 a
67	Tall	88.0 a	510.9 a
	Short	113.4 a	427.9 a
83	Tall	82.5 a	365.8 a
	Short	83.3 a	337.0 a
156	Tall	257.6 a	770.2 a
	Short	210.1 a	989.4 a
160	Tall	13.5 b	112.0 b
	Short	106.6 a	521.5 a
163	Tall	174.5 a	516.0 a
	Short	113.4 a	692.6 a
Mean	Tall	105.1	394.7
	Short	114.2	537.2

Table 6. Effect of stock plant pruning height (Tall, 30 cm; Short, 15 cm) on free indole-3-acetic acid (IAA) and abscisic acid (ABA) concentrations in *Corymbia torelliana* × *C. citriodora* cuttings in setting 1 and setting 2. Means (\pm SE) with different capital letters within each pruning treatment, and different lower case letters within each clone, are significantly different (ANOVA and HSD test, or t -test; $p < 0.05$; $n = 3$).

Clone	Pruning Height	Setting 1		Setting 2	
		Free IAA (ng·g ⁻¹ DM)	ABA (ng·g ⁻¹ DM)	Free IAA (ng·g ⁻¹ DM)	ABA (ng·g ⁻¹ DM)
29	Tall	657 ± 31 ABa	153 ± 3 CDa	305 ± 9 BCa	130 ± 8 BCa
	Short	414 ± 11 Cb	151 ± 5 Ba	294 ± 9 Da	168 ± 24 Da
67	Tall	605 ± 28 Ba	342 ± 24 Aa	369 ± 27 ABa	329 ± 12 ABa
	Short	624 ± 27 ABa	195 ± 23 Ba	445 ± 18 Aa	225 ± 27 Ab
83	Tall	771 ± 26 Aa	282 ± 26 ABa	243 ± 11 CDb	241 ± 24 CDa
	Short	599 ± 13 ABb	149 ± 6 Bb	396 ± 10 BCa	166 ± 15 BCa
156	Tall	741 ± 5 ABa	330 ± 30 Aa	247 ± 16 CDb	99 ± 8 CDb
	Short	668 ± 22 Ab	345 ± 41 Aa	360 ± 2 Ca	267 ± 29 Ca
160	Tall	331 ± 40 Ca	88 ± 4 Db	400 ± 10 Aa	169 ± 20 Aa
	Short	361 ± 38 Ca	130 ± 3 Ba	388 ± 5 BCa	138 ± 9 BCa
163	Tall	448 ± 32 Ca	197 ± 11 BCa	224 ± 14 Db	134 ± 2 Db
	Short	495 ± 45 BCa	208 ± 5 Ba	413 ± 9 ABa	257 ± 4 ABa

The stems of cuttings from short and tall *C. torelliana* × *C. citriodora* stock plants exhibited similar anatomy, irrespective of the clone and setting. Stems had a central pith region, surrounded by vascular tissue containing internal phloem, xylem, cambium and external phloem arranged in a circular pattern. This was surrounded by the cortical tissue and epidermis (Figure 1).

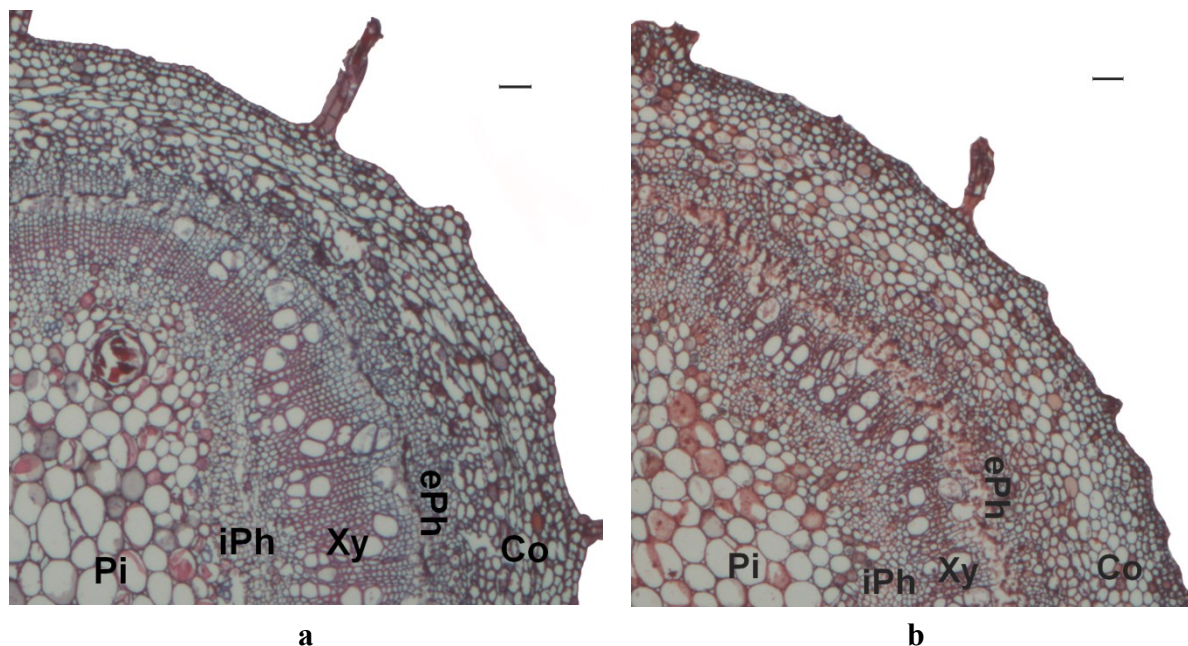


Figure 1. Stem anatomy of cuttings from *Corymbia torelliana* × *C. citriodora* clone 160 after stock plants were pruned at tall (30 cm, **a**) or short (15 cm, **b**) height. Scale bars = 100 μm. Pi: Pith, iPh: internal phloem, Xy: xylem, ePh: external phloem, Co: cortex.

4. Discussion

Maintaining stock plants of *C. torelliana* × *C. citriodora* at the lower height of 15 cm sometimes reduced the production of stem cuttings but it very often increased the ensuing percentage of cuttings that formed roots. As a result, short stock plants had a similar or higher multiplication rate than tall stock plants. Mean rooting percentages for cuttings from the tall stock plants (30%) were comparable to those from nursery stock plants of *C. torelliana* × *C. citriodora* that were pruned at the same height (30 cm) in previous studies; *i.e.*, 30% [32], 31% [30], 34% [34] and 46% [21]. In contrast, mean rooting percentages for cuttings from the short stock plants (53%) were closer to those from cuttings harvested directly from 10-node seedlings (61%) [20]. Clonal storage under minimal-growth conditions at 14 °C (when compared with conventional nursery archiving) also increases, from 31%–47%, the subsequent rooting frequency of cuttings from *C. torelliana* × *C. citriodora* stock plants [30]. These results indicate that maintaining stock plants at the lower height of 15 cm increased rooting by reducing the maturation of *C. torelliana* × *C. citriodora* shoots.

Gradients in maturation within plants strongly influence propagation capacity in several species [14,35], with different cutting positions affecting the shoot morphology, rooting ability, and subsequent growth of rooted cuttings [13,35–38]. Rooting ability of cuttings generally decreases from the basal to the apical part of trees [9,10,39–41]. Small differences in shoot position (*i.e.*, ~15 cm), due to the different stock

plant heights in the current study, affected both the speed of root protrusion from propagation tubes and the percentage of cuttings that forms roots. Root protrusion was used primarily to assess the rooting vigor of cuttings although it has also been used as a convenient and reliable predictor of final rooting percentages [27]. The consistent correlations between root protrusion at all assessment dates and the final rooting percentage support the use of root protrusion as a forecasting tool in the production of *C. torelliana* × *C. citriodora* rooted cuttings. In most cases, the positive effects of a lower stock plant height on root protrusion were not reflected in differences in the root dry mass, shoot dry mass or height of rooted cuttings. However, shorter stock plants did, occasionally, produce larger rooted cuttings than taller stock plants. This supports the conclusion that maturation can increase with increasing distance from the base of the plant and that maturation can affect the growth of rooted cuttings [4,7,42,43].

Maturation and topographic effects have often been attributed to gradients in cellular activity, lignification, sclerification, or the concentrations of plant hormones or assimilates along the stem axis [9,44]. The effects on root formation in the current study were not the result of differences in IAA or ABA concentrations of cuttings from the stock plants of different heights. Endogenous auxin levels are often pivotal in the rooting process of plants [16,45–47] but rooting potential and cutting vigor were not correlated with IAA or ABA concentrations of *C. torelliana* × *C. citriodora* cuttings. These results accord with findings from other woody plants including *Castanea sativa* Mill., *Syringa vulgaris* L., *Prunus persica* L., *P. cerasus* L. × *P. canescens* Bois and *Eucalyptus globulus* Labill. [48–50]. They are also similar to recent results from the 10-node seedlings of *C. torelliana* × *C. citriodora*, where varying rooting capacity among the nodes was poorly related to differences in IAA or ABA concentrations [20]. Tissue response to auxin may be regulated by other factors such as the sensitivity of cells to the auxin signal and the concentration of rooting inhibitors in the base of cuttings [48,51].

Differences in the rooting capacity of *C. torelliana* × *C. citriodora* cuttings in the current study were not associated with differences in stem anatomy. Sclerenchyma often forms outside the site of adventitious root formation as the stem develops [33,44], and rooting capacity sometimes declines as the continuity or number of cell layers of this sclerenchyma ring increases [52–54]. The rooting capacity of cuttings from 10-node seedlings of *C. torelliana* × *C. citriodora* is related to tissue lignification and sclerification, with cuttings from the lower-capacity basal nodes being more lignified and sclerified than cuttings from the higher-capacity apical nodes [20]. In the present study, however, cuttings that arose from the pruned *C. torelliana* × *C. citriodora* stock plants of different heights shared similar levels of lignification and displayed very little sclerification. This demonstrates that regular pruning (at approximately fortnightly intervals in this study) provided fresh shoots with suitable morphology for adventitious root formation.

The effectiveness of continuous pruning in maintaining the juvenility of stock plants has varied among previous studies, most of which have been conducted on conifer species. Juvenility can often be maintained in continuously pruned hedges [11,55,56] while, in other cases, long-term pruning does little to alleviate maturation [11,57] and rooting declines with increasing stock plant age [58–60]. Very few studies have evaluated the effectiveness of continuous pruning in maintaining the juvenility of hardwood species [6,30]. Shoot production, adventitious rooting capacity and root vigor are considered markers of juvenility [7,8,28,41,46,61–64], and our results suggest that juvenility is maintained over a six-month period by continuous pruning of *C. torelliana* × *C. citriodora* stock plants at 15-cm height.

The ability to increase the production of stem cuttings across sequential harvests from 15-cm or 30-cm stock plants indicates that this type of intensive nursery system can maintain adequate plant condition for shoot production. The low initial productivity (seen in the first three collections) is common and may be related to adaptation of the ramet to the stock plant management system [61,62] and to seasonal effects on shoot production [22,23,28,65,66]. Stock plant productivity is also dependent on the growing system which, in the case of commercial *Eucalyptus* propagation, is often semi-hydroponic [1]. The same growing system as the present study (*i.e.*, pots and potting mix) has been used previously for *C. citriodora* stock plants [22], achieving similar stock plant productivity once allowances for differences in stock plant density are considered. The calculation of multiplication rates is important to verify the effectiveness of the adopted cloning system, combining both stem cutting production and rooting percentage to determine overall productivity. Lower pruning tended to provide fewer stem cuttings but higher rooting percentages and, consequently, there was a balance—or sometimes an increase—in the multiplication rate. The lower pruning system also has advantages in reducing the amount of labor and nursery space required for producing rooted cuttings, thus lowering production costs [1].

5. Conclusions

Maturation effects were evident in the management of *C. torelliana* × *C. citriodora* stock plants, with a relatively small difference of 15 cm in plant height having significant effects on the rooting potential and vigour of cuttings. These effects were not related to the endogenous IAA and ABA concentrations of cuttings, nor were they related to differences in the degree of lignification or sclerification of cuttings. Regular pruning of stock plants maintained vegetative propagation ability in this hybrid for a duration similar to that of large-scale eucalypt nurseries that utilize a virtual clonal hedge production system [2]. The amenability of *C. torelliana* × *C. citriodora* to cutting propagation has been an impediment to its establishment in clonal plantations, partly because commercial nurseries prefer to propagate cuttings that provide at least 70% rooting [12,67]. This and previous studies [14,20,29,30,68] demonstrate that effective maintenance of stock plant juvenility will be critical in allowing large-scale establishment of this eucalypt hybrid in clonal plantations.

Acknowledgments

We thank Tracey McMahon and Pip Bryant for assistance. This work was supported by the Brazilian Agricultural Research Corporation (Embrapa) and the Queensland National and International Research Alliances Program.

Author Contributions

Ivar Wendling and Stephen J. Trueman conceived and designed the study. Ivar Wendling and Paul M. Warburton performed the experiments. Ivar Wendling analysed the data. Ivar Wendling and Stephen J. Trueman wrote the manuscript with assistance from Paul M. Warburton.

Conflicts of Interest

The authors declare no conflict of interest.

References

1. Xavier, A.; Wendling, I.; Silva, R.L. *Silvicultura Clonal—Princípios e Técnicas*; Editora UFV: Viçosa, Brazil, 2013.
2. Assis, T.F.; Fett-Neto, A.G.; Alfenas, A.C. Current techniques and prospects for the clonal propagation of hardwoods with emphasis on *Eucalyptus*. In *Plantation Forest Biotechnology for the 21st Century*; Walter, C., Carson, M., Eds.; Research Signpost: Kerala, India, 2004; pp. 303–333.
3. Bettinger, P.; Clutter, M.; Siry, J.; Kane, M.; Pait, J. Broad implications of southern United States pine clonal forestry on planning and management of forests. *Int. For. Rev.* **2009**, *11*, 331–345.
4. Greenwood, M.S.; Hutchinson, K.W. Maturation as a developmental process. In *Clonal Forestry I: Genetics and Biotechnology*; Ahuja, M.R., Libby, W.J., Eds.; Springer-Verlag: Berlin, Germany, 1993; pp. 14–33.
5. Mitchell, R.G.; Zwolinski, J.; Jones, N.B. A review on the effects of donor maturation on rooting and field performance of conifer cuttings. *South. Afr. For. J.* **2004**, *201*, 51–63.
6. McMahan, T.V.; Hung, C.D.; Trueman, S.J. *In vitro* storage delays the maturation of African mahogany (*Khaya senegalensis*) clones. *J. Plant Sci.* **2013**, *8*, 31–38.
7. Pijut, P.M.; Woeste, K.E.; Michler, C.H. Promotion of adventitious root formation of difficult-to-root hardwood tree species. *Hortic. Rev.* **2011**, *38*, 213–251.
8. Husen, A. Changes of soluble sugars and enzymatic activities during adventitious rooting in cuttings of *Grewia optiva* as affected by age of donor plants and auxin treatments. *Am. J. Plant Physiol.* **2012**, *7*, 1–16.
9. Wendling, I.; Trueman, S.J.; Xavier, A. Maturation and related aspects in clonal forestry—Part I: Concepts, regulation and consequences of phase change. *New For.* **2014**, *45*, 449–471.
10. Wendling, I.; Trueman, S.J.; Xavier, A. Maturation and related aspects in clonal forestry—Part II: Reinvigoration, rejuvenation and juvenility maintenance. *New For.* **2014**, *45*, 473–486.
11. Aimers-Halliday, J.; Menzies, M.I.; Faulds, T.; Holden, D.G.; Low, C.B.; Dibley, M.J. Nursery systems to control maturation in *Pinus radiata* cuttings, comparing hedging and serial propagation. *N. Z. J. For. Sci.* **2003**, *33*, 135–155.
12. Trueman, S.J. Clonal propagation and storage of subtropical pines in Queensland, Australia. *South. Afr. For. J.* **2006**, *208*, 49–52.
13. Abu-Abied, M.; Szwerdzarf, D.; Mordehaev, I.; Levy, A.; Rogovoy, O.; Belausov, E.; Yaniv, Y.; Uliel, S.; Katzenellenbogen, M.; Riov, J.; *et al.* Microarray analysis revealed upregulation of nitrate reductase in juvenile cuttings of *Eucalyptus grandis*, which correlated with increased nitric oxide production and adventitious root formation. *Plant J.* **2012**, *71*, 787–799.
14. Hung, C.D.; Trueman, S.J. Topographic effects differ between node and organogenic cultures of the eucalypt *Corymbia torelliana* × *C. citriodora*. *Plant Cell Tissue Organ Cult.* **2011**, *104*, 69–77.
15. Davies, P.J. The plant hormones: Their nature, occurrence, and functions. In *Plant Hormones*; Davies, P.J., Ed.; Springer: Dordrecht, The Netherlands, 2010; pp. 1–15.
16. Costa, C.T.; de Almeida, M.R.; Ruedell, C.M.; Schwambach, J.; Maraschin, F.S.; Fett-Neto, A.G. When stress and development go hand in hand: Main hormonal controls of adventitious rooting in cuttings. *Front. Plant Sci.* **2013**, *4*, 1–19.

17. Chen, C.W.; Yang, Y.W.; Lur, H.S.; Tsai, Y.G.; Chang, M.C. A novel function of abscisic acid in the regulation of rice (*Oryza sativa*) root growth and development. *Plant Cell Physiol.* **2006**, *47*, 1–13.
18. Mwange, W.N.; Hou, H.W.; Cui, K.M. Relationship between endogenous indole-3-acetic acid and abscisic acid changes and bark recovery in *Eucommia ulmoides* Oliv. after girdling. *J. Exp. Bot.* **2003**, *54*, 1899–1907.
19. Materán, M.E.; Fernández, M.; Valenzuela, S.; Sáez, K.; Seemann, P.; Sánchez-Olate, M.; Ríos, D. Abscisic acid and 3-indolacetic acid levels during the reinvigoration process of *Pinus radiata* D. Don adult material. *Plant Growth Regul.* **2009**, *59*, 171–177.
20. Wendling, I.; Brooks, P.R.; Trueman, S.J. Topophysis in *Corymbia torelliana* × *C. citriodora* seedlings: Adventitious rooting capacity, stem anatomy, and auxin and abscisic acid concentrations. *New For.* **2015**, *46*, 107–120.
21. Trueman, S.J.; Adkins, M.F. Effect of aminoethoxyvinylglycine and 1-methylcyclopropene on leaf abscission and root formation in *Corymbia* and *Eucalyptus* cuttings. *Sci. Hort.* **2013**, *161*, 1–7.
22. Trueman, S.J.; McMahon, T.V.; Bristow, M. Production of cuttings in response to stock plant temperature in the subtropical eucalypts, *Corymbia citriodora* and *Eucalyptus dunnii*. *New For.* **2013**, *44*, 265–279.
23. Trueman, S.J.; McMahon, T.V.; Bristow, M. Production of *Eucalyptus cloeziana* cuttings in response to stock plant temperature. *J. Trop. For. Sci.* **2013**, *25*, 60–69.
24. Bryant, P.H.; Trueman, S.J. Stem anatomy and adventitious root formation in cuttings of *Angophora*, *Corymbia* and *Eucalyptus*. *Forests* **2015**, *6*, 1227–1238.
25. Titon, M.; Xavier, A.; Otoni, W.C. Clonal propagation of *Eucalyptus grandis* using the mini-cutting and micro-cutting techniques. *Sci. For.* **2006**, *71*, 109–117.
26. Rosa, L.S.; Wendling, I.; Grossi, F.; Reissmann, C.B. Effect of the nitrogen dose and substrate formulations on the minicutting technique of *Eucalyptus dunnii* Maiden. *Rev. Árv.* **2009**, *33*, 1025–1035.
27. Brondani, G.E.; Grossi, F.; Wendling, I.; Dutra, L.F.; Araujo, M.A. *Eucalyptus benthamii* × *Eucalyptus dunnii* mini-cutting technique: (II) mini-cutting survival and rooting in relation to collection and seasons. *Ciência Flor.* **2010**, *20*, 453–465.
28. Brondani, G.E.; Wendling, I.; Grossi, F.; Dutra, L.F.; de Araujo, M.A. Miniestaquia de *Eucalyptus benthamii* × *Eucalyptus dunnii*: (I) sobrevivência de minicepas e produção de miniestacas em função das coletas e estações do ano. *Ciência Flor.* **2012**, *22*, 11–21.
29. Hung, C.D.; Trueman, S.J. Nutrient responses differ between node and organogenic cultures of *Corymbia torelliana* × *C. citriodora* (Myrtaceae). *Aust. J. Bot.* **2010**, *58*, 410–419.
30. McMahon, T.V.; Hung, C.D.; Trueman, S.J. Clonal maturation of *Corymbia torelliana* × *C. citriodora* is delayed by minimal-growth storage. *Aust. For.* **2014**, *77*, 9–14.
31. Kelen, M.; Demiralay, E.C.; Sen, S.; Ozkan, G. Separation of abscisic acid, indole-3-acetic acid, gibberellic acid in 99 R (*Vitis berlandieri* × *Vitis rupestris*) and rose oil (*Rosa damascena* Mill.) by reversed phase liquid chromatography. *Turk. J. Chem.* **2004**, *28*, 603–610.
32. Kilkenny, A.J.; Wallace, H.M.; Walton, D.A.; Adkins, M.F.; Trueman, S.J. Improved root formation in eucalypt cuttings following combined auxin and anti-ethylene treatments. *J. Plant Sci.* **2012**, *7*, 138–153.

33. Pohio, K.E.; Wallace, H.M.; Peters, R.F.; Smith, T.E.; Trueman, S.J. Cuttings of Wollemi pine tolerate moderate photoinhibition and remain highly capable of root formation. *Trees* **2005**, *19*, 587–595.
34. Trueman, S.J.; Richardson, D.M. Relationships between indole-3-butyric acid, photoinhibition and adventitious rooting of *Corymbia torelliana*, *C. citriodora* and F₁ hybrid cuttings. *Tree For. Sci. Biotechnol.* **2008**, *2*, 26–33.
35. Husen, A.; Pal, M. Effect of branch position and auxin treatment on clonal propagation of *Tectona grandis* Linn. f. *New For.* **2007**, *34*, 223–233.
36. Tchoundjeu, Z.; Leakey, R.R.B. Vegetative propagation of African mahogany: Effects of auxin, node position, leaf area and cutting length. *New For.* **1996**, *11*, 125–136.
37. Husen, A.; Pal, M. Effect of serial bud grafting and etiolation on rejuvenation and rooting of mature trees of *Tectona grandis* Linn. f. *Silvae Genet.* **2003**, *52*, 84–88.
38. Husen, A.; Pal, M. Variation in shoot anatomy and rooting behaviour of stem cuttings in relation to age of donor plants in teak (*Tectona grandis* Linn. f.). *New For.* **2006**, *31*, 57–73.
39. Haines, R.; Walker, S. Maturation questions relating to clonal forestry. In *Clonal Forestry Workshop*; QFRI: Gympie, Australia, 1993; p. 13.
40. Bon, M.C.; Riccardi, F.; Monteuis, O. Influence of phase change within a 90-year-old *Sequoia sempervirens* on its *in vitro* organogenic capacity and protein patterns. *Trees* **1994**, *8*, 283–287.
41. Bitencourt, J.; Ribas, K.C.Z.; Wendling, I.; Koeler, H. Enraizamento de estacas de erva-mate (*Ilex paraguariensis* A. St.-Hill.) provenientes de brotações rejuvenescidas. *Rev. Bras. Plant. Med.* **2009**, *11*, 277–281.
42. Hackett, W.P.; Murray, J.R. Maturation and rejuvenation in woody species. In *Micropropagation of Woody Plants*; Ahuja, M.R., Ed.; Kluwer Academic Publishers: Dordrecht, The Netherlands, 1993; pp. 93–105.
43. Von Aderkas, P.; Bonga, J.M. Influencing micropropagation and somatic embryogenesis in mature trees by manipulation of phase change, stress and culture environment. *Tree Physiol.* **2000**, *20*, 921–928.
44. Hartmann, H.T.; Kester, D.E.; Davies, F.T., Jr.; Geneve, R.L. *Plant Propagation: Principles and Practices*; Prentice-Hall: Upper Saddle River, NJ, USA, 2011.
45. Osterc, G.; Štefančič, M.; Štampar, F. Juvenile stockplant material enhances root development through higher endogenous auxin level. *Acta Physiol. Plant.* **2009**, *31*, 899–903.
46. Osterc, G.; Štampar, F. Differences in endo/exogenous auxin profile in cuttings of different physiological ages. *J. Plant Physiol.* **2011**, *168*, 2088–2092.
47. Almeida, M.R.; Bastiani, D.; Gaeta, M.L.; Mariath, J.E.A.; Costa, F.; Retallick, J.; Nolan, L.; Tai, H.H.; Strömvik, M.V.; Fett-Neto, A.G. Comparative transcriptional analysis provides new insights into the molecular basis of adventitious rooting recalcitrance in *Eucalyptus*. *Plant. Sci.* **2015**, *239*, 155–165.
48. Ford, Y.Y.; Bonham, E.C.; Cameron, R.W.F.; Blake, P.S.; Judd, H.L.; Harrison-Murray, R.S. Adventitious rooting: Examining the role of auxin in an easy-and a difficult-to-root plant. *Plant Growth Regul.* **2002**, *36*, 149–159.

49. Tsipouridis, C.; Thomidis, T.; Bladenopoulou, S. Rhizogenesis of GF677, Early Crest, May Crest and Arm King stem cuttings during the year in relation to carbohydrate and natural hormone content. *Sci. Hortic.* **2006**, *108*, 200–204.
50. Negishi, N.; Nakahama, K.; Urata, N.; Kojima, M.; Sakakibara, H.; Kawaoka, A. Hormone level analysis on adventitious root formation in *Eucalyptus globulus*. *New For.* **2014**, *45*, 577–587.
51. Stewart, J.L.; Nemhauser, J.L. Do trees grow on money? Auxin as the currency of the cellular economy. *Cold Spring Harb. Perspect. Biol.* **2010**, *2*, 2–14.
52. Maynard, B.K.; Bassuk, N.L. Effects of stock plant etiolation, shading, banding, and shoot development on histology and cutting propagation of *Carpinus betulus* L. *fastigiata*. *J. Am. Soc. Hortic. Sci.* **1996**, *121*, 853–860.
53. Pacholczak, A.; Szydło, W.; Łukaszewska, A. The effect of shading of stock plants on rhizogenesis in stem cuttings of *Berberis thunbergii* “Red Rocket”. *Acta Physiol. Plant.* **2006**, *28*, 567–575.
54. Amissah, J.N.; Paolillo, D.J., Jr.; Bassuk, N. Adventitious root formation in stem cuttings of *Quercus bicolor* and *Quercus macrocarpa* and its relationship to stem anatomy. *J. Am. Soc. Hortic. Sci.* **2008**, *133*, 479–486.
55. Bonga, J.M.; von Aderkas, P. Rejuvenation of tissues from mature conifers and its implications for propagation *in vitro*. In *Clonal Forestry I, Genetics and Biotechnology*; Ahuja, M.R., Libby, W.J., Eds.; Springer-Verlag: Berlin, Germany, 1993; pp. 182–199.
56. Hamann, A. Adventitious root formation in cuttings of loblolly pine (*Pinus taeda* L.): Developmental sequence and effects of maturation. *Trees* **1998**, *12*, 175–180.
57. Russel, J.H. Clonal forestry with yellow cedar. In *Clonal Forestry II, Conservation and Application*; Ahuja, M.R., Libby, W.J., Eds.; Springer-Verlag: Berlin, Germany, 1993; pp. 188–201.
58. Ritchie, G.A. The commercial use of conifer rooted cuttings in forestry: A world overview. *New For.* **1991**, *5*, 247–275.
59. McGranahan, M.F.; Boralho, N.M.G.; Greaves, B.L. Genetic control of propagation effects and the importance of stock plant age and source on early growth in cuttings of *Pinus radiata*. *Silvae Genet.* **1999**, *48*, 267–272.
60. Mitchell, R.G.; Zwolinski, J.; Jones, N.B. The effects of ontogenetic maturation in *Pinus patula*—Part I: Nursery performance. *South. Afr. For. J.* **2004**, *202*, 29–36.
61. Wendling, I.; Xavier, A.; Paiva, H.D. Influência da miniestaquia seriada no vigor de minicepas de clones de *Eucalyptus grandis*. *Rev. Árv.* **2003**, *27*, 611–618.
62. Wendling, I.; Dutra, L.F.; Grossi, F. Produção e sobrevivência de miniestacas e minicepas de erva-mate cultivadas em sistema semi-hidropônico. *Pesq. Agropec. Bras.* **2007**, *42*, 289–292.
63. Da Cunha, A.C.M.C.M.; Wendling, I.; Júnior, L.S. Produtividade e sobrevivência de minicepas de *Eucalyptus benthamii* Maiden et Cambage em sistema de hidroponia e em tubete. *Ciência Flor.* **2005**, *15*, 307–310.
64. Majada, J.; Martínez-Alonso, C.; Feito, I.; Kidelman, A.; Aranda, I.; Alía, R. Mini-cuttings: An effective technique for the propagation of *Pinus pinaster* Ait. *New For.* **2011**, *41*, 399–412.
65. Da Cunha, A.C.M.C.M.; Paiva, H.N.; Leite, H.G.; Barros, N.F.; Leite, F.P. Relações entre variáveis climáticas com produção e enraizamento de miniestacas de eucalipto. *Rev. Árv.* **2009**, *33*, 195–203.

66. Trueman, S.J.; McMahon, T.V.; Bristow, M. Biomass partitioning in *Corymbia citriodora*, *Eucalyptus cloeziana* and *E. dunnii* stock plants in response to temperature. *J. Trop. For. Sci.* **2013**, *5*, 504–509.
67. Hunt, M.A.; Trueman, S.J.; Rasmussen, A. Indole-3-butyric acid accelerates adventitious root formation and impedes shoot growth of *Pinus elliottii* var. *elliottii* × *P. caribaea* var. *hondurensis* cuttings. *New For.* **2011**, *41*, 349–360.
68. Hung, C.D.; Trueman, S.J. Alginate encapsulation of shoot tips and nodal segments for short-term storage and distribution of the eucalypt *Corymbia torelliana* × *C. citriodora*. *Acta Physiol. Plant.* **2012**, *34*, 117–128.

© 2015 by the authors; licensee MDPI, Basel, Switzerland. This article is an open access article distributed under the terms and conditions of the Creative Commons Attribution license (<http://creativecommons.org/licenses/by/4.0/>).