



Supplementary Material

# Challenges to Implementing an Environmental Flow Regime in the Luvuvhu River Catchment, South Africa

Pfananani Ramulifho <sup>1,\*</sup>, Esther Ndou <sup>2</sup>, Reuben Thifhulufhelwi <sup>3</sup> and Tatenda Dalu <sup>4</sup>

<sup>1</sup> SARCHI Chair in Biodiversity Value and Change in the Vhembe Biosphere Reserve Research Group, University of Venda, Thohoyandou 0950, South Africa

<sup>2</sup> Centre for Water Resources Research, University of KwaZulu-Natal, Scottsville 3209, South Africa

<sup>3</sup> Environmental Learning and Research Centre, Rhodes University, Grahamstown 6140, South Africa

<sup>4</sup> Aquatic Systems Research Group, Department of Ecology and Resource Management, University of Venda, Thohoyandou 0950, South Africa

\* Correspondence: pfananani.ramulifho@gmail.com

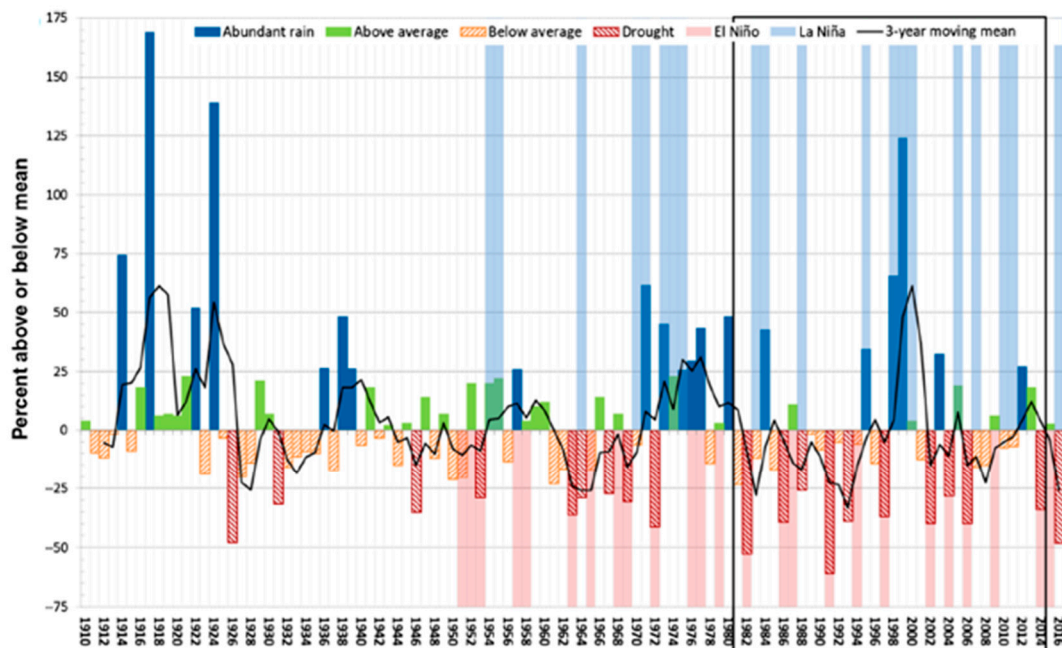


Fig. S1. Unchanging long-term patterns of annual rainfall (mm) of Kruger climate records

[57].

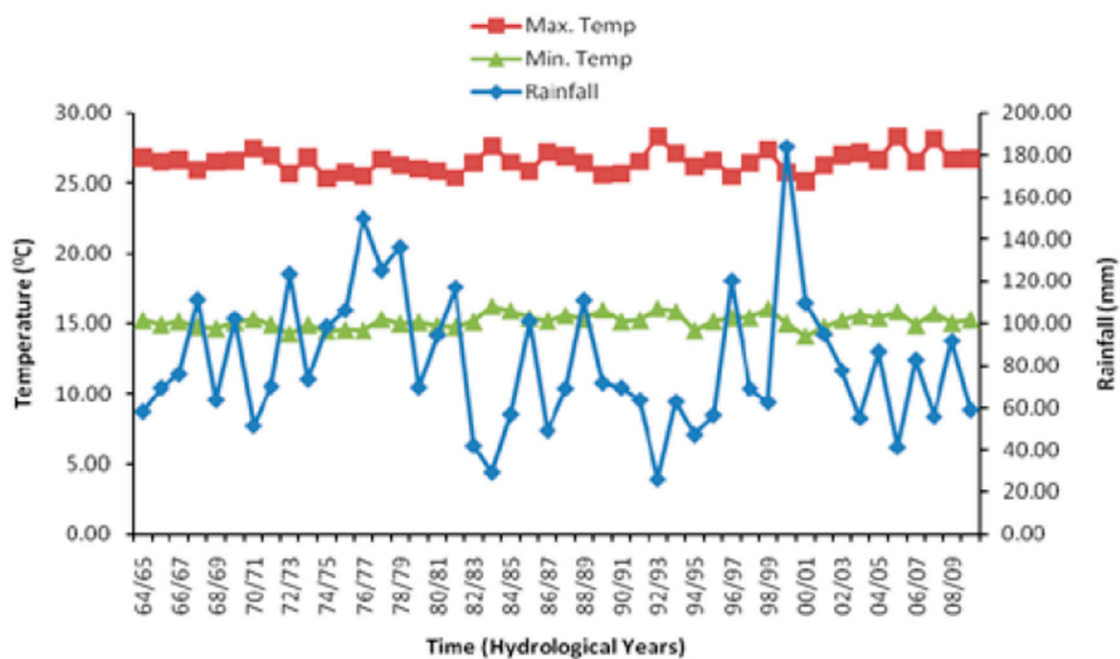


Fig. S2. Unchanging rainfall in relation to minimum and maximum temperatures in the Levubu area.



© 2019 by the authors. Submitted for possible open access publication under the terms and conditions of the Creative Commons Attribution (CC BY) license (<http://creativecommons.org/licenses/by/4.0/>).