

Supplementary Information

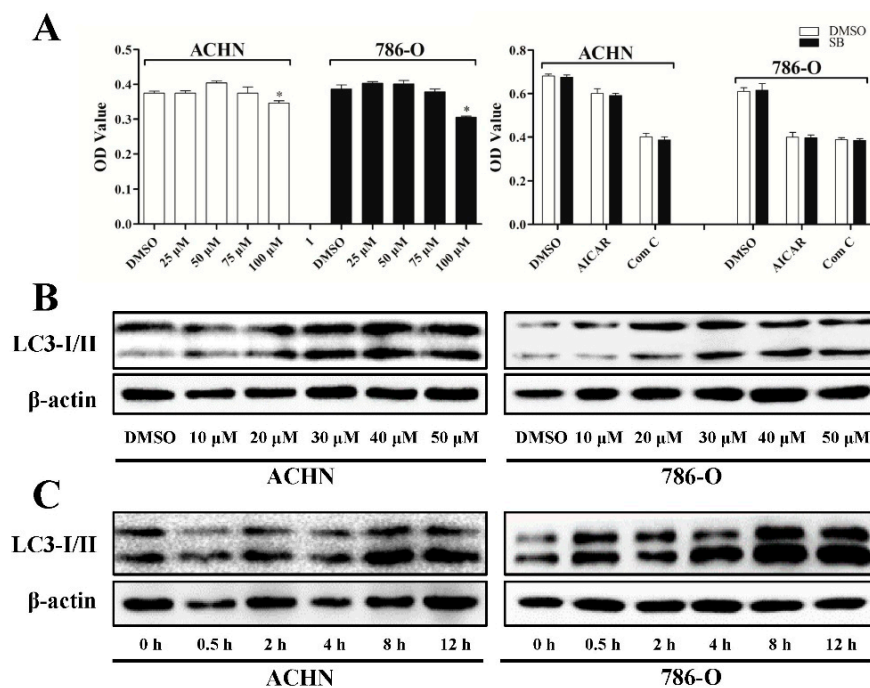


Figure S1. Effects of different doses of silibinin on cell viability and LC3-I/II levels. (A) MTT was performed to assess the impact of different doses of silibinin on cells viability after 24 h incubation with or without AICAR (1 mM) or Compound C (5 μ M) pretreatment. Cells were treated with (B) different doses of silibinin (10, 20, 30, 40, and 50 μ M) for 24 h or (C) treated with 50 μ M of silibinin for different time periods (0, 2, 4, 8, and 12 h); autophagy marker LC3-I/II was checked. β -Actin was used as the loading control. Blots are representative of three separate experiments. Error bars represent SDs. * $p < 0.05$.

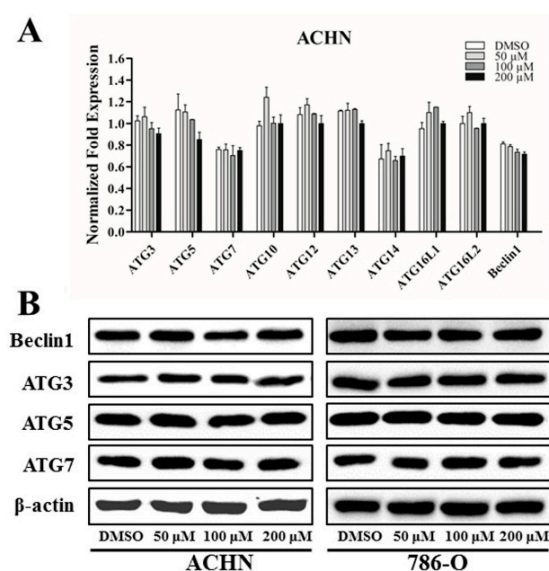


Figure S2. Effects of silibinin on autophagy-related gene expressions. After treatment with silibinin (50, 100, and 200 μ M) for 24 h, the expression of autophagy-related ATGs was checked by real-time PCR (A) and Western blot (B). β 2MG and β -actin were used as the control, respectively. Real-time PCR and blots are representative of three separate experiments. Error bars represent SDs.

Table S1. The primers used in real-time PCR.

Gene	Forward	Reverse
<i>β2MG</i>	GAGGCTATCCAGCGTACTCCA	CGGCAGGCATACTCATCTTTT
<i>SQSTM1/p62</i>	GCACCCCAATGTGATCTGC	CGCTACACAAGTCGTAGTCTGG
<i>Beclin1</i>	CCATGCAGGTGAGCTTCGT	GAATCTGCGAGAGACACCATC
<i>ATG3</i>	GACCCCGGTCCTCAAGGAA	TGTAGCCCATTGCCATGTTGG
<i>ATG5</i>	AAAGATGTGCTTCGAGATGTGT	CACTTTGTCAGTTACCAACGTCA
<i>ATG7</i>	CAGTTTGCCCTTTTAGTAGTGC	CCAGCCGATACTCGTTCAGC
<i>ATG10</i>	AGACCATCAAAGGACTGTTCTGA	GGGTAGATGCTCCTAGATGTGAC
<i>ATG12</i>	CTGCTGGCGACACCAAGAAA	CGTGTTGCTCTACTGCCC
<i>ATG13</i>	TTGCTATAACTAGGGTGACACCA	CCCAACACGAACTGTCTGGA
<i>ATG14</i>	GCGCCAAATGCGTTCAGAG	AGTCGGCTTAACCTTTCCTTCT
<i>ATG16L1</i>	AACGCTGTGCAGTTCAGTCC	AGCTGCTAAGAGGTAAGATCCA
<i>ATG16L2</i>	TGGACAAGTTCTCAAAGAAGCTG	CCTCAGTGC GACCAGTGAT