

Supplementary Material: Use of Repetitive Sequences for Molecular and Cytogenetic Characterization of *Avena* Species from Portugal

Diana Tomás, Joana Rodrigues, Ana Varela, Maria Manuela Veloso, Wanda Viegas and Manuela Silva

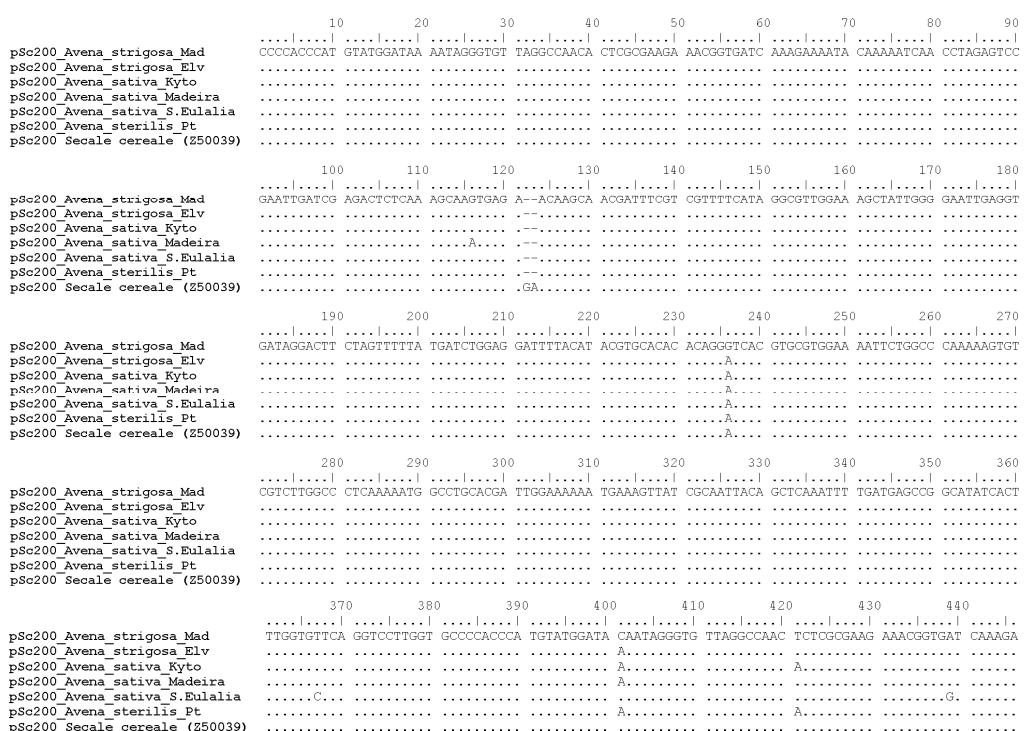


Figure S1. Alignment of pSc200-like sequences obtained from *A. strigosa* (“Madeira Island” and “Elvas”), *A. sativa* (“Kyto”, “Madeira Island” and “S. Eulália”), *A. sterilis* and *S. cereale* subtelomeric sequence (Accession Number Z50039).

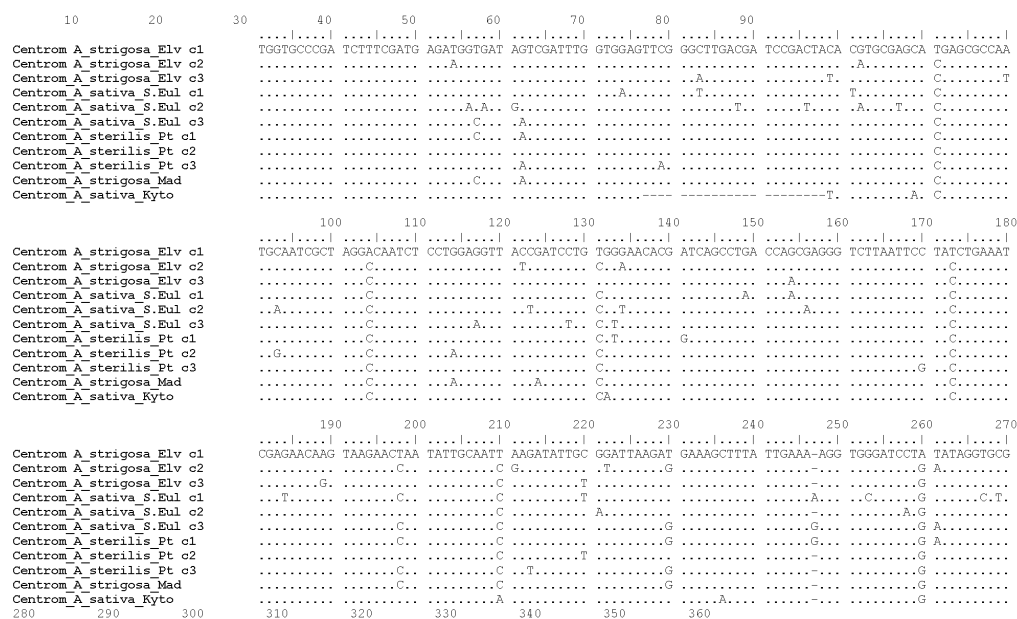


Figure S2. Cont.



Figure S2. Alignment of Centromeric Sequences obtained from *A. strigosa* (“Madeira Island” and “Elvas”), *A. sativa* (“Kyto” and S. Eulália”) and *A. sterilis*.

Table S1. GenBank Accession Numbers of pSc200 and Centromeric Sequences.

Sequence	Accession Numbers
pSc200_Avena_strigosa_Mad	KM948601
pSc200_Avena_strigosa_Elv	KM948602
pSc200_Avena_sativa_Kyto	KM948603
pSc200_Avena_sativa_Madeira	KM948604
pSc200_Avena_sativa_S.Eulalia	KM948605
pSc200_Avena_sterilis_Pt	KM948606
Centromeric_Avena_strigosa_Elv_clone1	KM948607
Centromeric_Avena_strigosa_Elv_clone2	KM948608
Centromeric_Avena_strigosa_Elv_clone3	KM948609
Centromeric_Avena_sativa_S.Eulalia_clone1	KM948610
Centromeric_Avena_sativa_S.Eulalia_clone2	KM948611
Centromeric_Avena_sativa_S.Eulalia_clone3	KM948612
Centromeric_Avena_sterilis_Pt_clone1	KM948613
Centromeric_Avena_sterilis_Pt_clone2	KM948614
Centromeric_Avena_sterilis_Pt_clone3	KM948615
Centromeric_Avena_strigosa_Mad	KM948616
Centromeric_Avena_sativa_Kyto	KM948617