

Supplementary Materials: Molecular Identification and Disease Management of Date Palm Sudden Decline Syndrome in the United Arab Emirates

Khawla J. Alwahshi, Esam Eldin Saeed, Arjun Sham, Aisha A. Alblooshi, Marwa M. Alblooshi, Khaled A. El-Tarabily and Synan F. AbuQamar

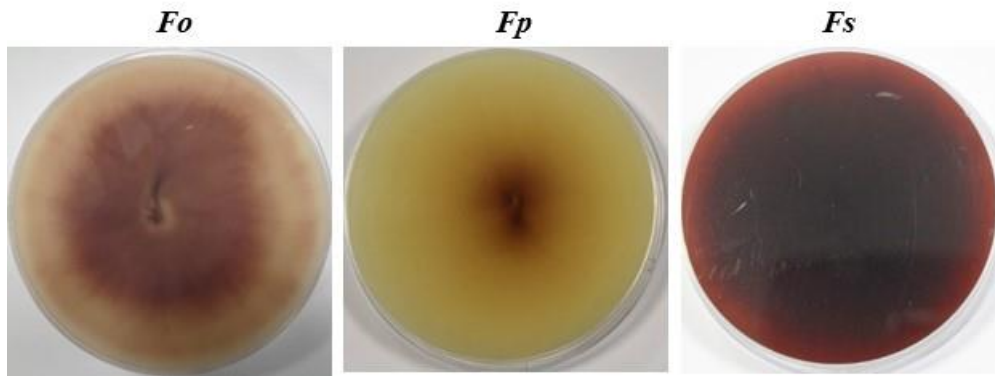


Figure S1. Sporulation of *Fusarium* spp. on a 10-day old PDA culture plate. *Fo*, *F. oxysporum*; *Fp*, *F. proliferatum*; *Fs*, *F. solani*.

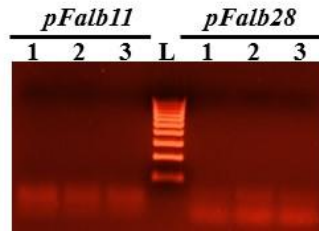


Figure S2. PCR amplification of specific genomic DNA regions of infected root tissues. Lanes 1-3 correspond to amplifications of specific primers of *F. oxysporum* f. sp. *albedenis* clone *pFalb11* and *pFalb28* in leaf tissues of seedling 1, 2 and 3. L, DNA ladder.

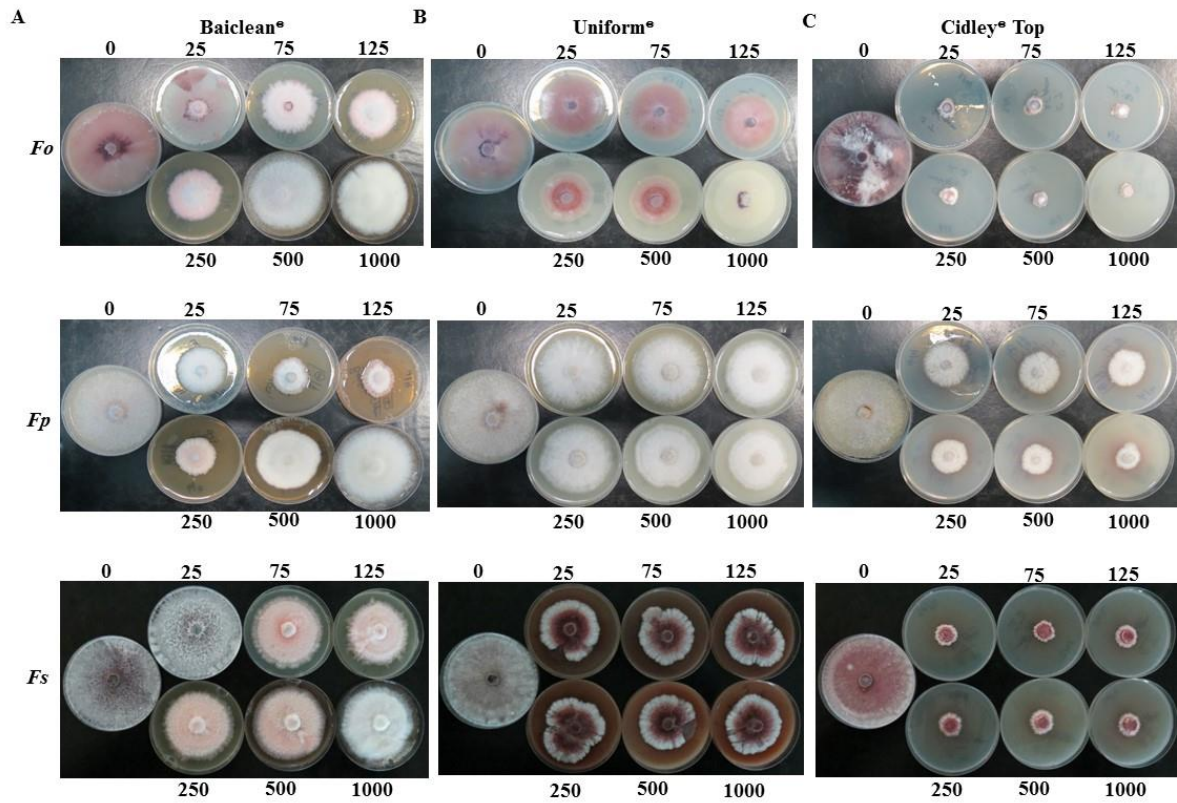


Figure S3. Growth inhibition effect of fungicides on *Fusarium* spp. Growth inhibitory effect on *Fusarium* spp. using different concentrations (in ppm) of (A) Baiclean®; (B) Uniform®; and (C) Cidley® Top, on PDA pales. Data were collected 10 days after inoculation. *Fo*, *F. oxysporum*; *Fp*, *F. proliferatum*; *Fs*, *F. solani*.

Table S1. List of PCR primers (sequence 5' to 3') used in this study.

Description	Left primer sequence	Right primer sequence
<i>ITS</i>	ITS1: TCCGTAGGTGAACCTGCGG	ITS4: TCCTCCGCTTATTGATATGC
<i>28S rDNA</i>	LRoR: ACCCGCTGACTTAAGC	LR5: TCCTGAGGGAAACTTCG
<i>TEF1-α</i>	EF1-728F: TCATCGCAAGTCGAGAAGGT	EF1-986R: ACTTGAAGGAACCCTTACCG
<i>β-tubulin</i>	Bt1a: TTCCCCCGTCTCCACTTCTTCATG	Bt1b: GACGAGATCGTTCATGTTGAACTC
<i>ITS/LSU</i>	<i>ITS/LSUF</i> : TACGCCGCATCCTTGCCGAG	<i>ITS/LSUR</i> : TTCCGTAGGTGAACCTGCGG
<i>pFalb11</i>	FOA1: CAGTTTATTAGAAATGCCGCC	BIO3: GGCGATCTTGATTGTATTGTGGTG
<i>pFalb28</i>	FOA28: ATCCCCGTAAAGCCCTGAAGC	TL3: GGTCGTCCGCAGAGTATACCGGC