

Figure S1. Growth inhibition assay of *F. langsethiae* (ER 1595) in presence of CF TV117. Petri dish non treated with CF on the left, in the middle and on the right Petri dishes treated with 0.04 % and 0.08 % (w/v) of CF TV117.

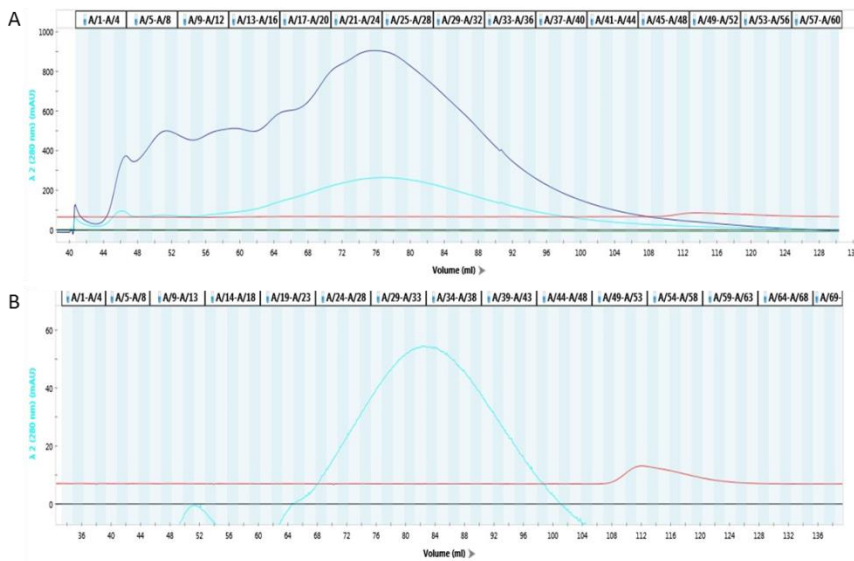


Figure S2: Sephacryl S-100 analysis of fractions : A, F75; B, F90.

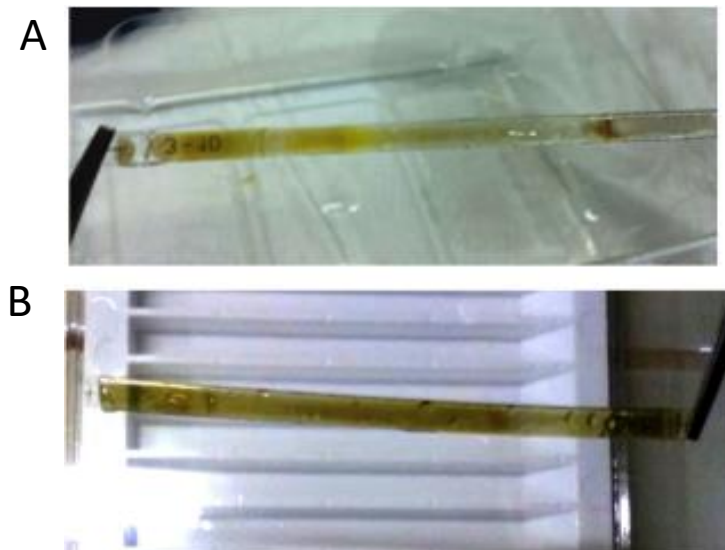


Figure S3: isoelectric focusing of the fractions F75_7 and F90_4, as example for determining the isoelectric point pI. The area with marked color indicates the regions where the proteins are positioned in the strip.

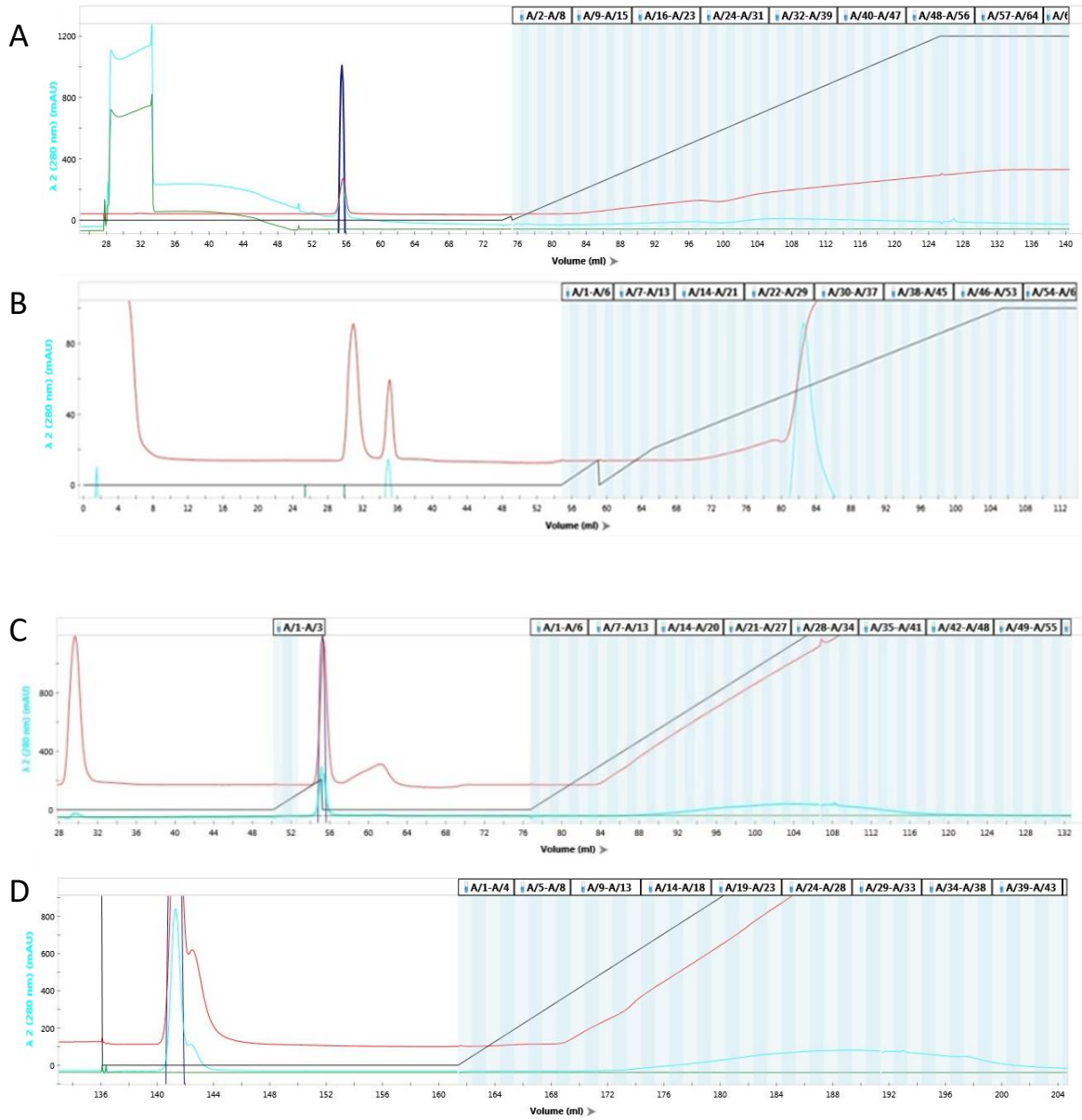


Figure S4: Chromatogram obtained from the HiTrap Q analysis of the fraction F75_7 (A), F90_2 (B), F90_4 (C), F90_5 (D).