



Supplementary Materials: Identification of the non-synonymous c.1531C>T pathogenic variant in the *CDH1* gene as a novel germline mutation of hereditary diffuse gastric cancer

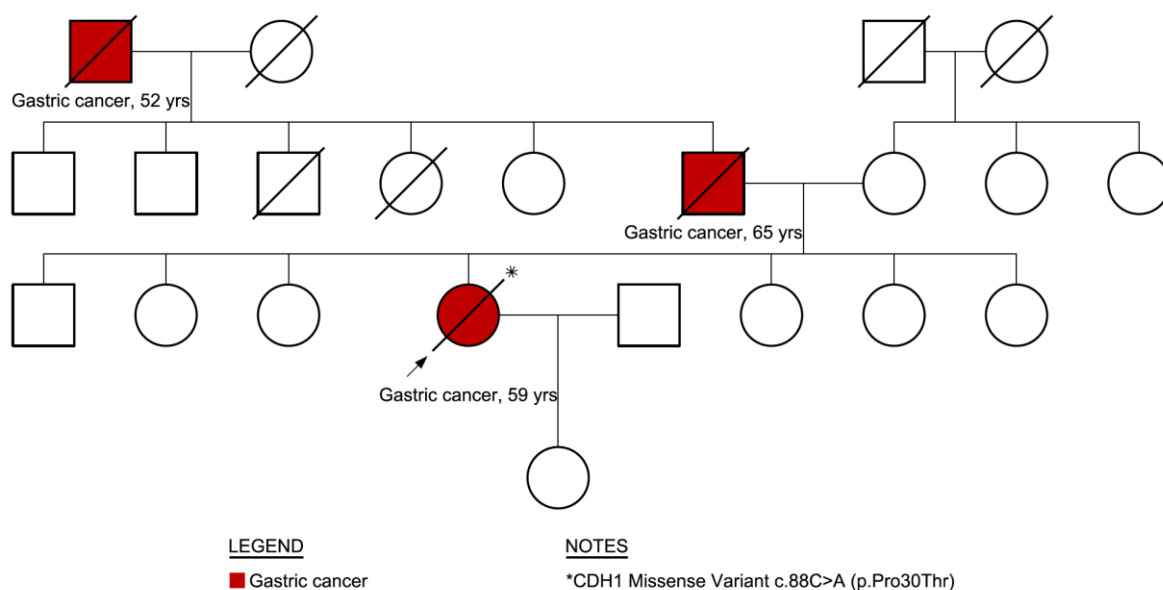


Figure S1. Family pedigree of proband with c88C>A (p.Pro30Thr, rs139866691) variant in a family history of HDGC. In red, the proband and two individuals in which DGC was confirmed.

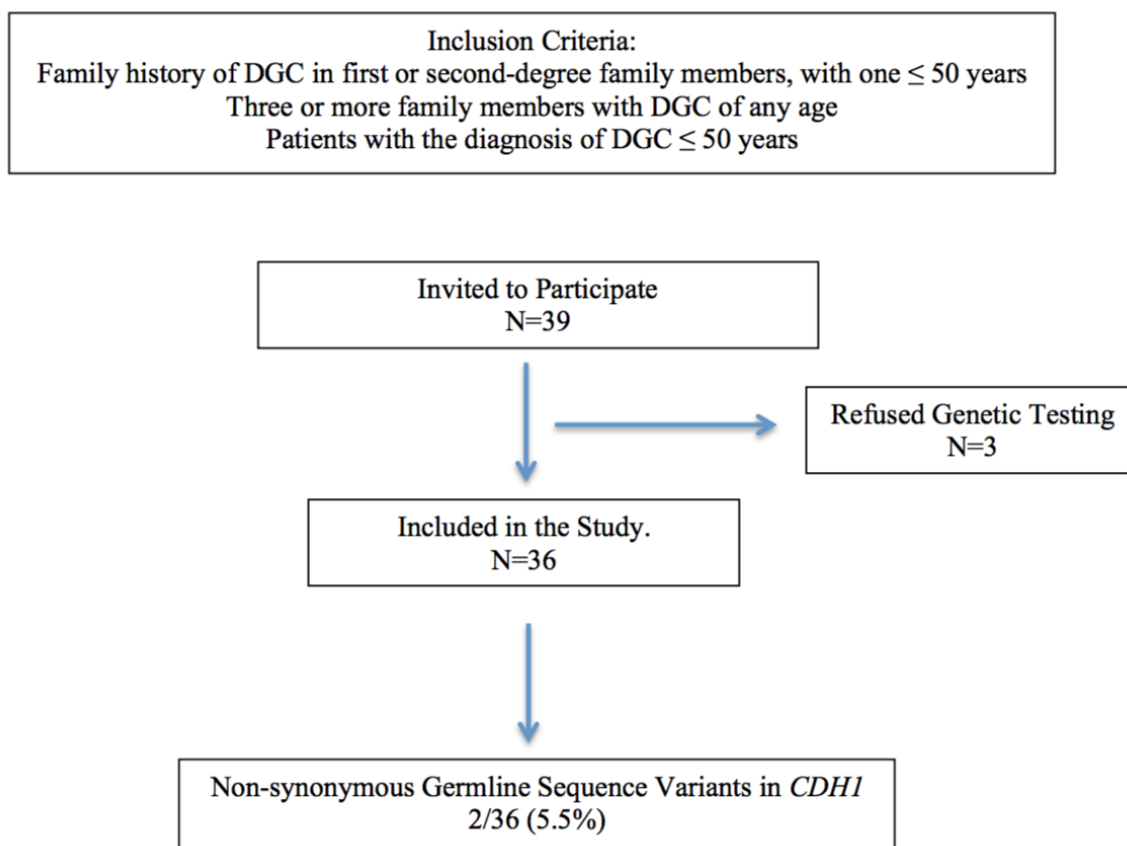


Figure S2: Flowchart of the study. DGC: Diffuse gastric cancer.