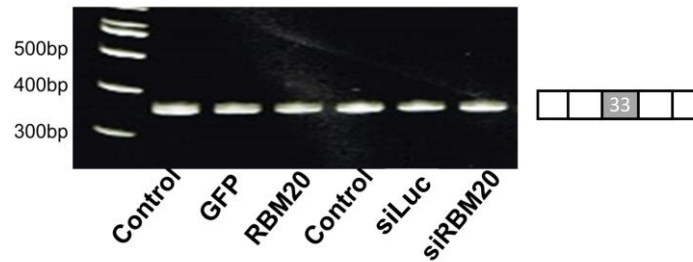


Figure S1. Titin splice variant expression upon RBM20 overexpression or siRNA knockdown. Titin splice isoform mRNA expression was measured by RT-PCR in control, GFP, RBM20-overexpressing (RBM20), luciferase-1-targeting siRNA (siLuc), or RBM20 siRNA (siRBM20) conditions. The picture is representative of three experiments from four cardiomyocyte preparations.

A



B

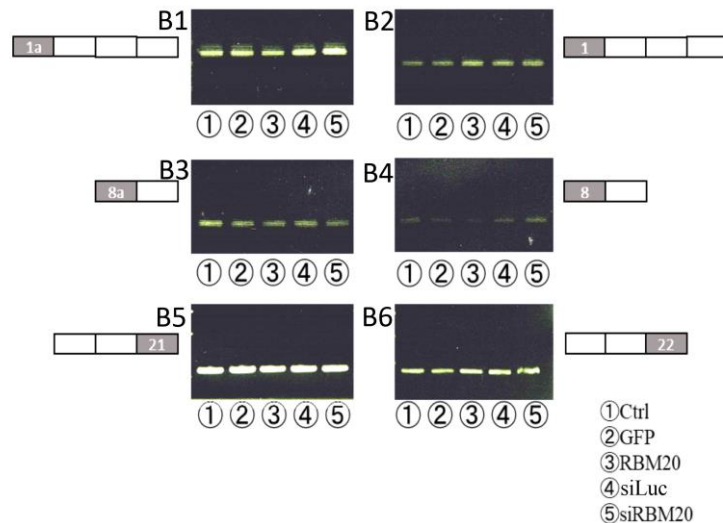


Figure S2. RBM20 does not regulate exon 33 alternative splicing or mutually exclusive exons. (A) The picture shows the results of the RT-PCR experiments showing the amplicon from the CaV1.2 exon 30–35 region in control, GFP, RBM20-overexpressing (RBM20), luciferase-1-targeting siRNA (siLuc), or RBM20 siRNA (siRBM20) conditions. The picture is representative of n = 4 experiments from four cardiomyocytes preparations. (B) The pictures display the representative results of the RT-PCR experiments, showing amplicons of regions covering exons 1a–4 (B1); 1–4 (B2); 8a–9 (B3); 8–9 (B4); 19–

21 (B5); and 19, 20, and 22 (B6) in control, GFP, RBM20-overexpressing (RBM20), luciferase-1-targeting siRNA (siLuc), or RBM20 siRNA (siRBM20) conditions. The picture is representative of n = 3 experiments from three cardiomyocyte preparations.