



Supplementary Materials

Novel Positive Allosteric Modulators of μ Opioid Receptor—Insight from In Silico and In Vivo Studies

Damian Bartuzi ^{1,*}, Ewa Kędzierska ², Agnieszka A. Kaczor ^{1,3,*}, Helmut Schmidhammer ⁴ and Dariusz Matosiuk ¹

¹ Department of Synthesis and Chemical Technology of Pharmaceutical Substances with Computer Modeling Laboratory, Faculty of Pharmacy, 4A Chodźki St, PL-20093 Lublin, Poland; dariusz.matosiuk@umlub.pl

² Department of Pharmacology and Pharmacodynamics, Faculty of Pharmacy, 4A Chodźki St, PL-20093 Lublin, Poland; ewa.kedzierska@umlub.pl

³ School of Pharmacy, University of Eastern Finland, Yliopistonranta 1, P.O. Box 1627, FI-70211 Kuopio, Finland

⁴ Department of Pharmaceutical Chemistry, Institute of Pharmacy and Center for Molecular Biosciences Innsbruck (CMBI), University of Innsbruck, Innrain 80-82, AT-6020 Innsbruck, Austria; helmut.schmidhammer@uibk.ac.at

* Correspondence: damian.bartuzi@gmail.com (D.B.); agnieszka.kaczor@umlub.pl (A.A.K.); Tel.: +48-81-4487273 (D.B. & A.A.K.)

Figures S1–S3

Tables S1–S4

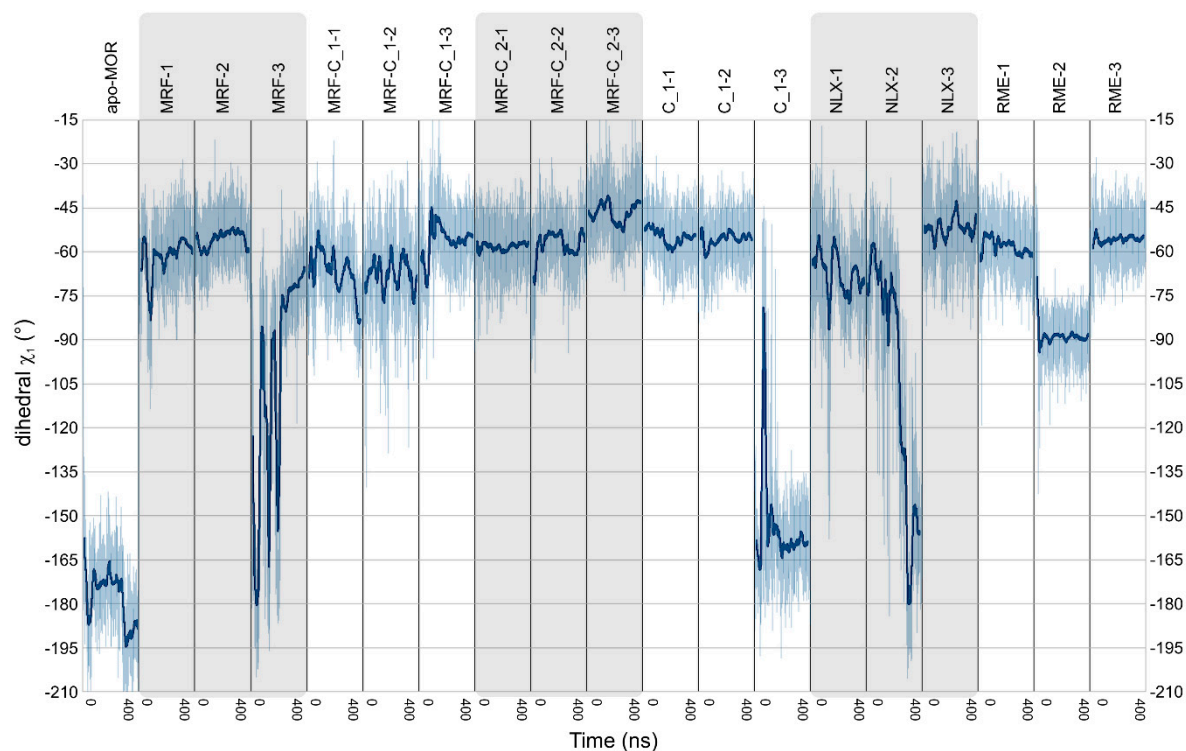


Figure S1. Values of χ_1 dihedral of Tyr 7.53 residue in all trajectories.

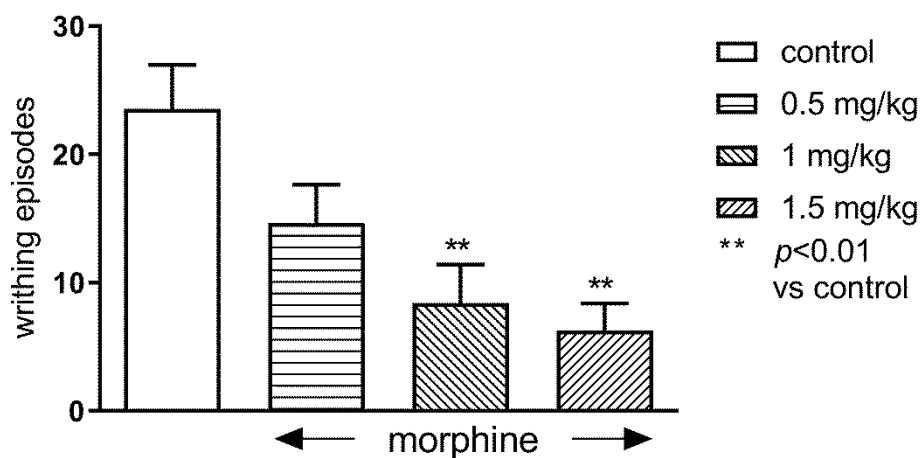


Figure S2. The effect of morphine (0.5, 1 and 2 mg/kg) on the nociceptive reactions in the 'writhing' test in mice. Morphine was administered s.c. 25 min before the test. The values represent means \pm SEM. One-way ANOVA showed significant changes in the writhing episodes after administration of morphine in above doses $F(3,33) = 6.884$; $p = 0.001$). Bonferroni's post hoc test confirmed a significant reduction in writhing episodes after the administration of morphine at the dose of 1 mg/kg ($p < 0.001$) and 1.5 mg/kg ($p < 0.01$).

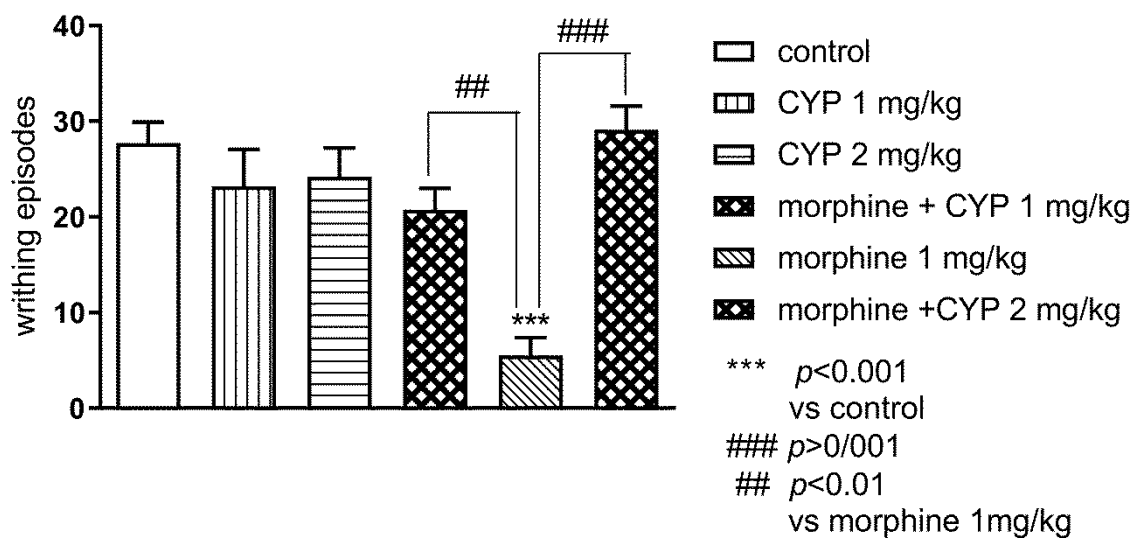


Figure S3. The influence of cyprodime (CYP, 1 and 2 mg/kg) on the antinociceptive activity of morphine in the 'writhing' test in mice. Morphine (1 mg/kg) and CYP were administered s.c. 25 min before the test. The values represent means \pm SEM. One-way ANOVA showed significant changes in the writhing episodes after administration of these compounds ($F(5,51) = 10.05$; $p < 0.0001$). Bonferroni's post hoc test confirmed a significant reduction in writhing episodes after the administration of morphine at the dose of 1 mg/kg ($p < 0.001$). CYP reversed antinociceptive effect of morphine at the dose 1 mg/kg ($p < 0.01$) and at the dose 2 mg/kg ($p < 0.001$).

Table S1. RMSF of the investigated compounds calculated in simulations in presence of morphine.

	Compound 1 (nm)	Compound 2 (nm)
Replica 1	0.2301	0.2283
Replica 2	0.2340	0.0961
Replica 3	0.1173	0.0969

Table S2. Ligand RMSD calculated for compound 1 and compound 2 in presence of morphine. C α atoms of the main chain of the TM7 bundle were used for fitting. Plots show RMSD between a particular frame and a frame 500 ps before. Peaks represent changes of conformation compared to the frame 500 ps before.

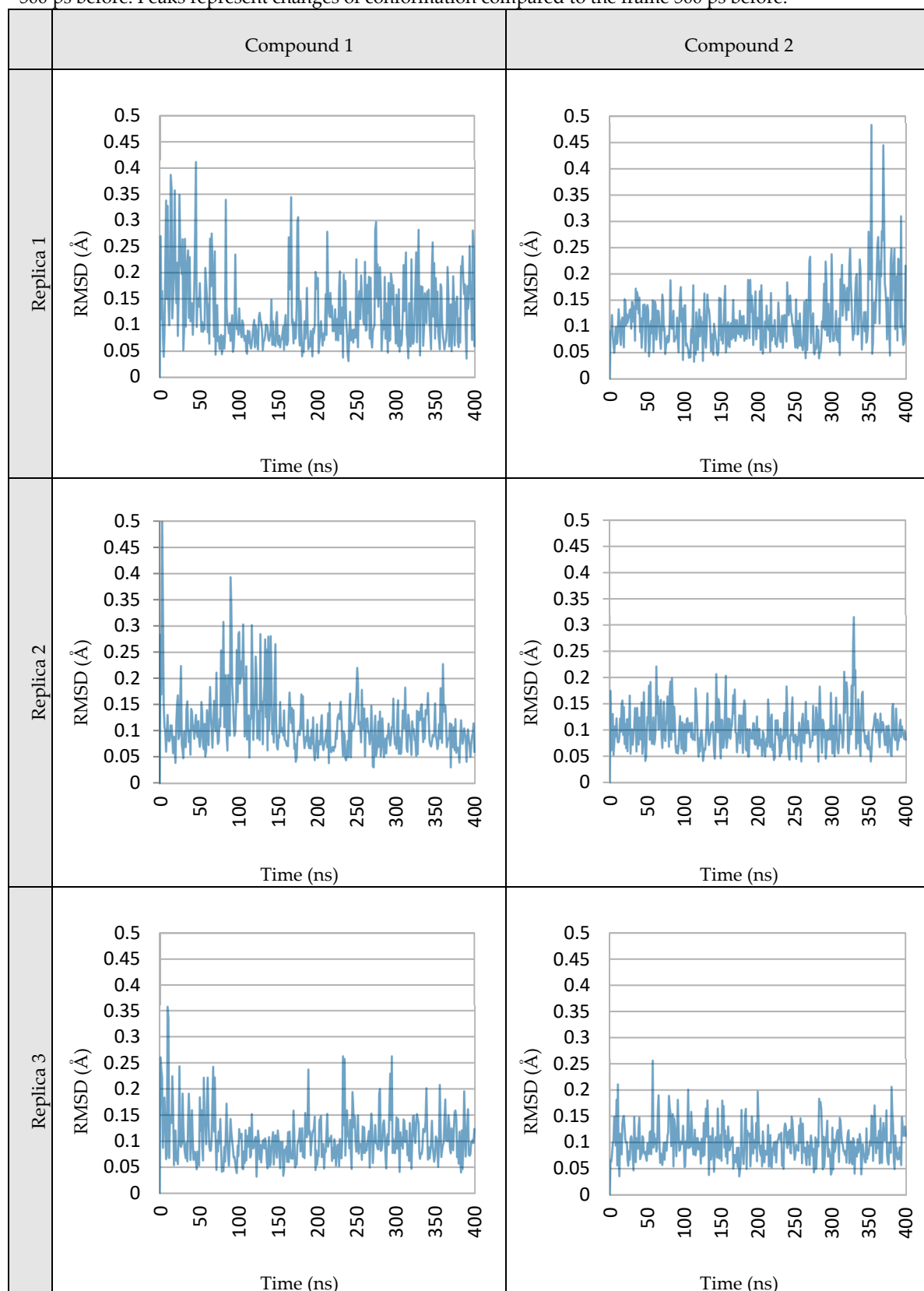
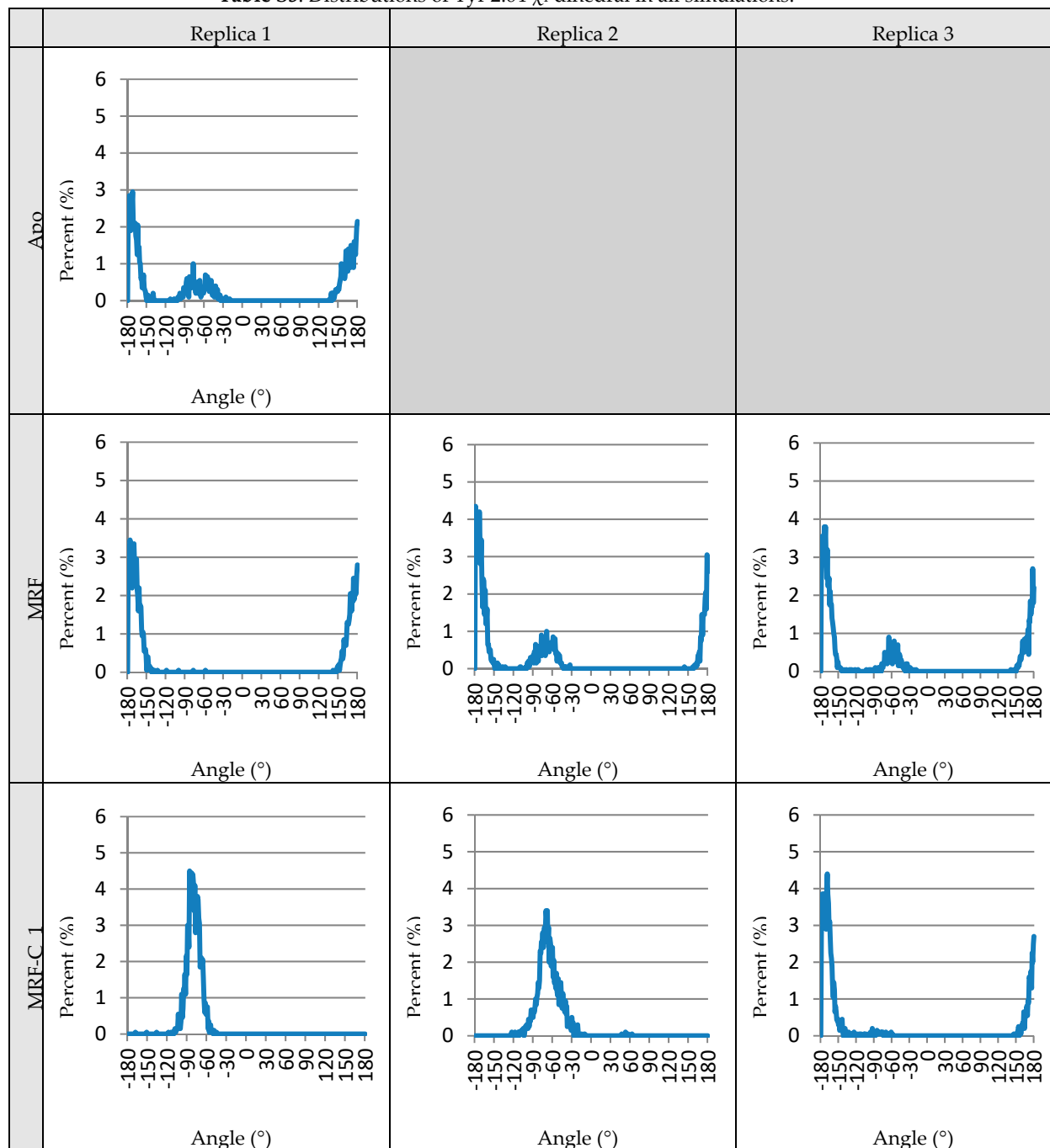


Table S3. Distributions of Tyr 2.64 χ_1 dihedral in all simulations.



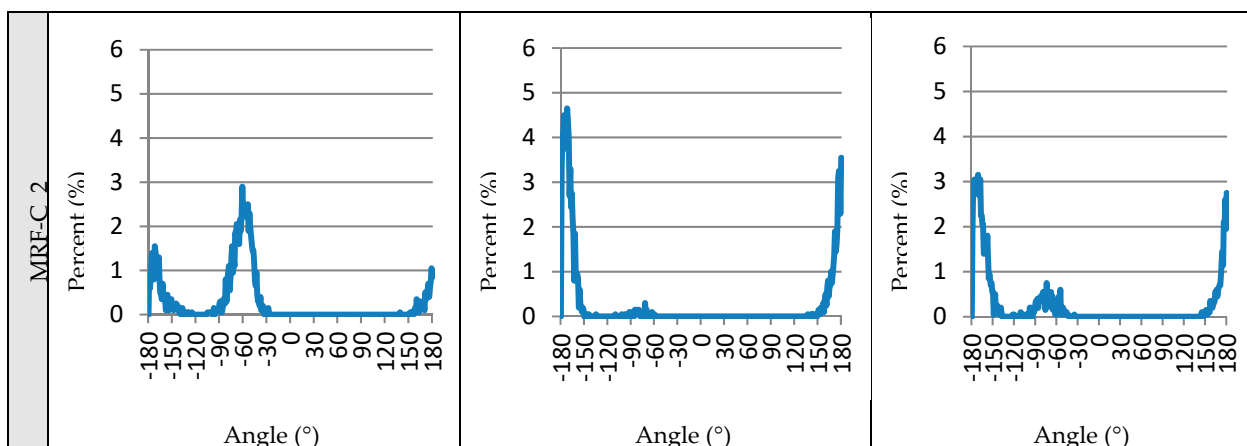
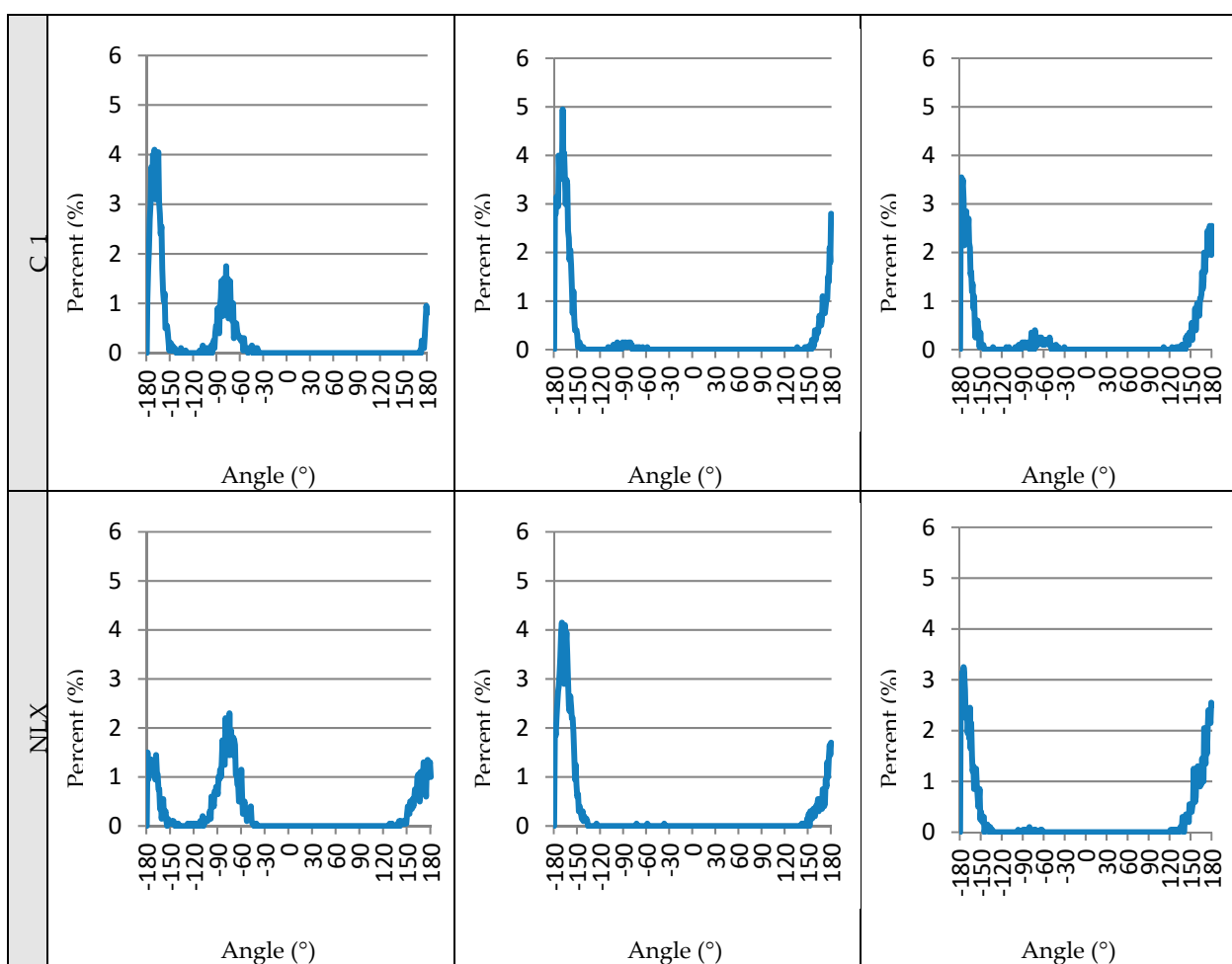


Table S3. (continued)



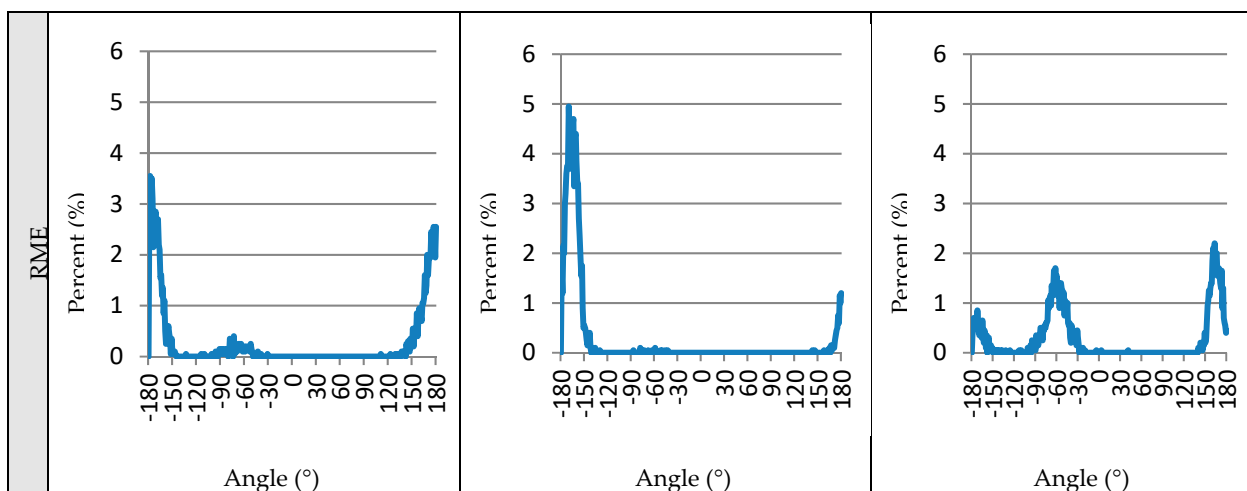
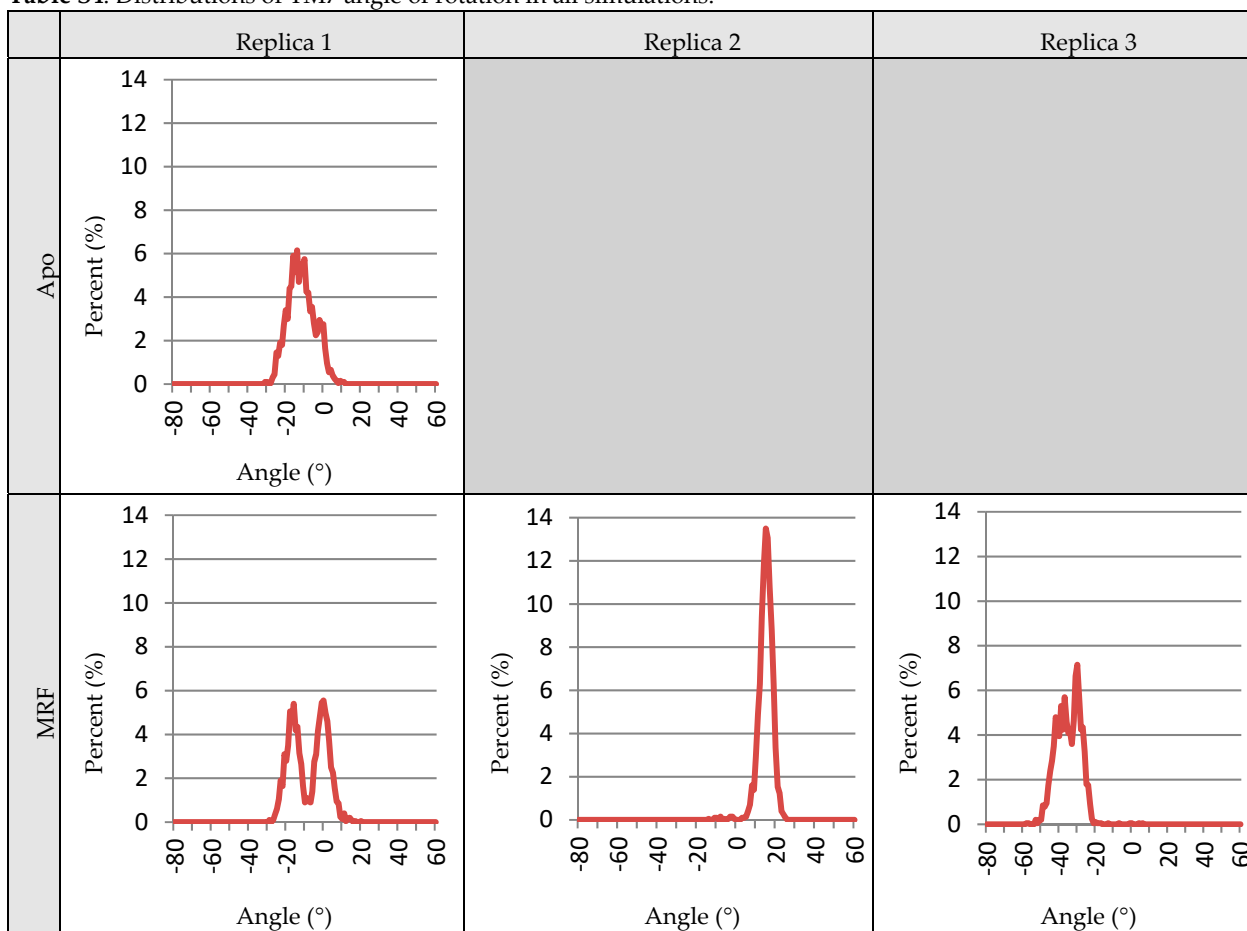


Table S4. Distributions of TM7 angle of rotation in all simulations.



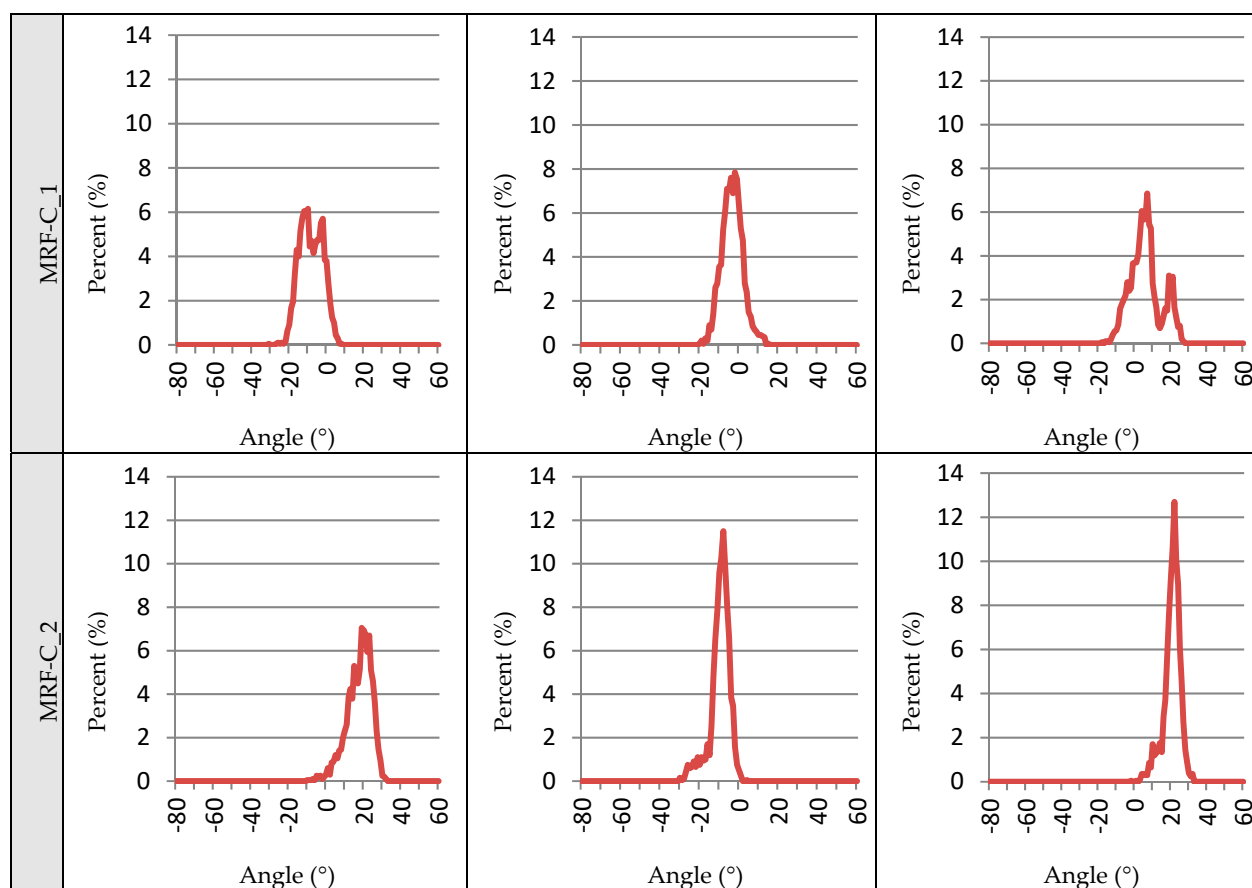


Table S4. (continued)

