

Assessment of land cover changes in the hinterland of Barranquilla (Colombia) using Landsat imagery and logistic regression

Henry Schubert*, Andrés Caballero Calvo, Markus Rauchecker, Oscar Rojas-Zamora, Grischa Brokamp and Brigitta Schütt

* Correspondence: h.schubert@fu-berlin.de; Tel.: +49-30-838-70519

Supplementary Note 1 - Vegetation cover changes

Maps of vegetation cover change for the periods 1985-1990, 1990-2001, 2001-2010 and 2010-2017 with the four transition classes: *stable vegetated*, *woody vegetation loss*, *stable unvegetated*, and *woody vegetation gain* (see Section 3.3).

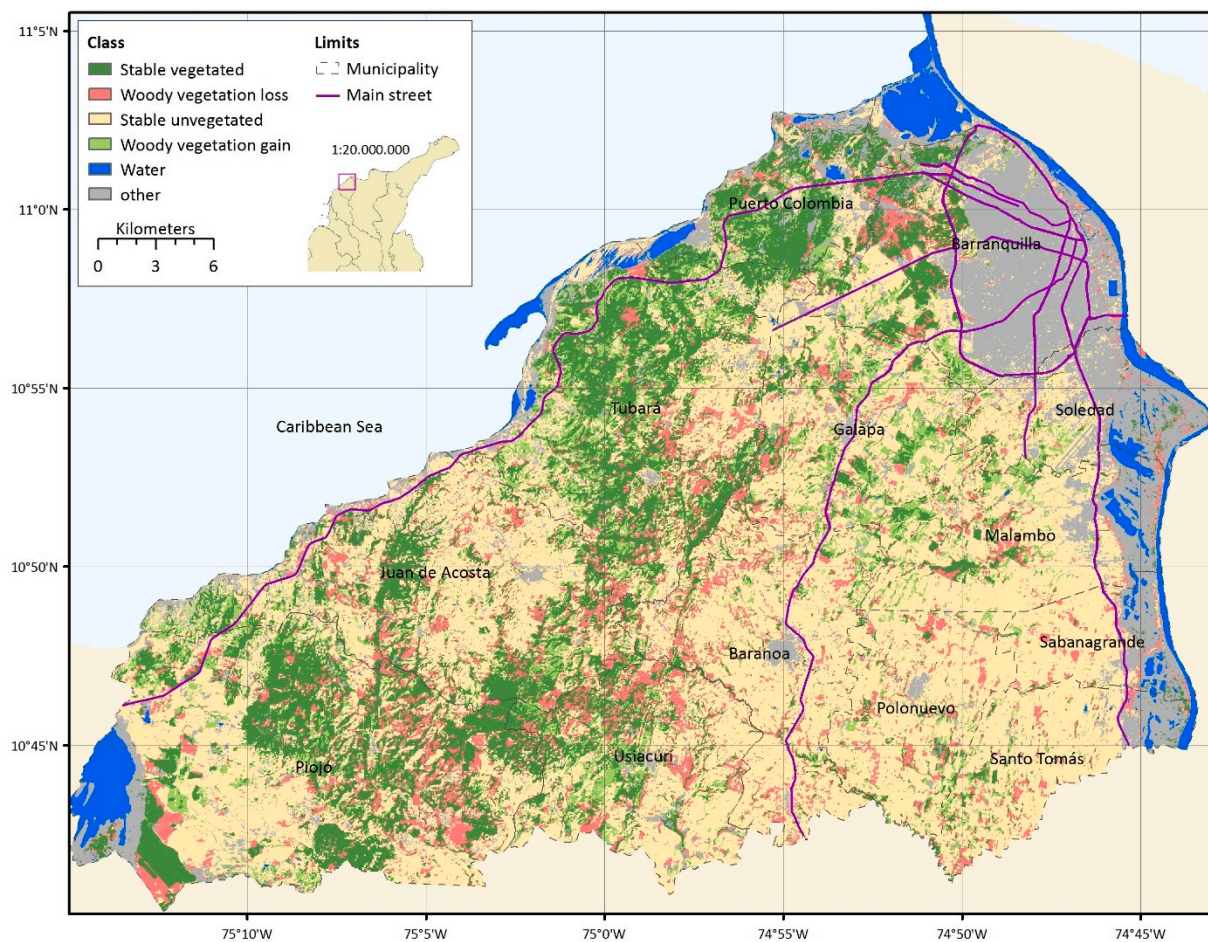


Figure S1. Vegetation cover changes in the hinterland of Barranquilla between 1985 and 1990.

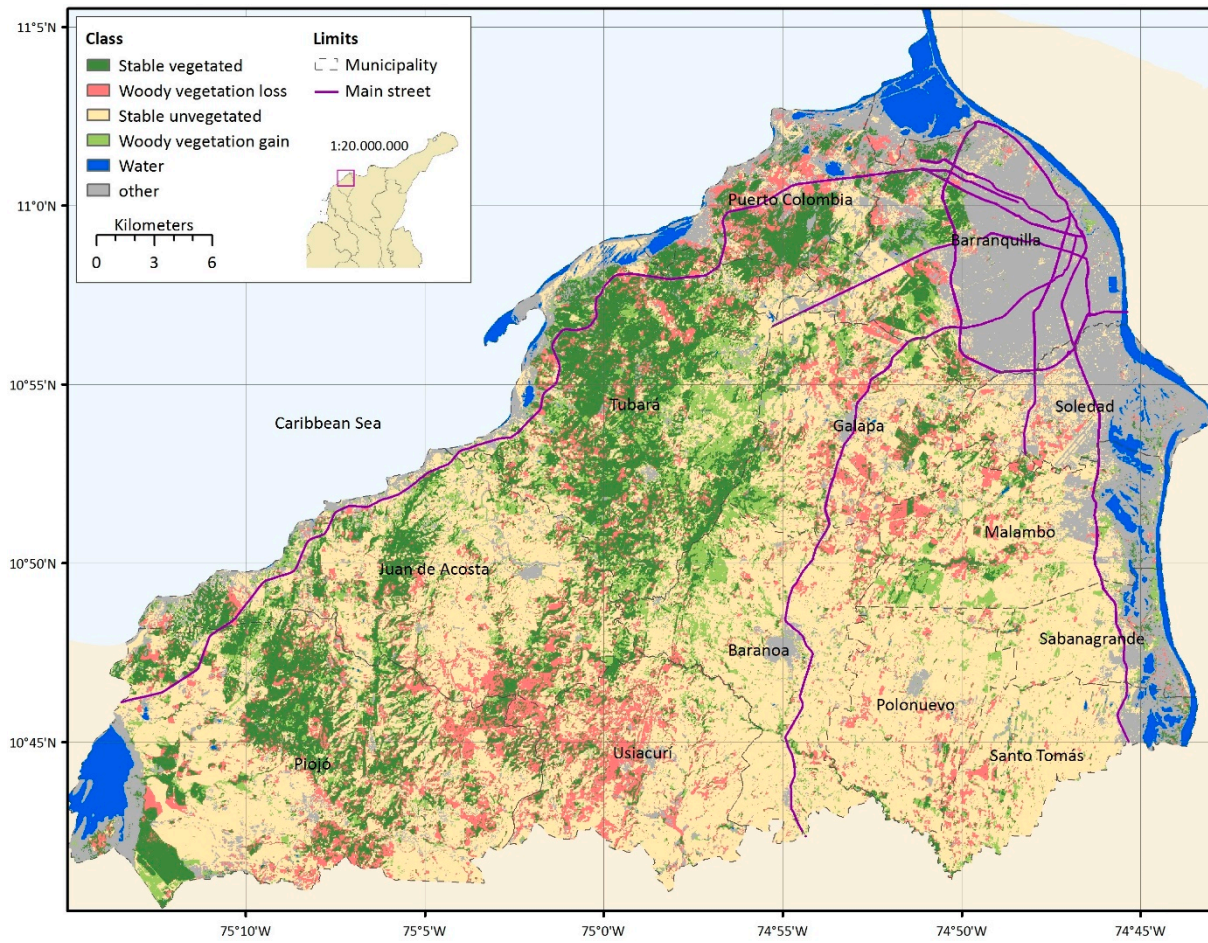


Figure S2. Vegetation cover changes in the hinterland of Barranquilla between 1990 and 2001.

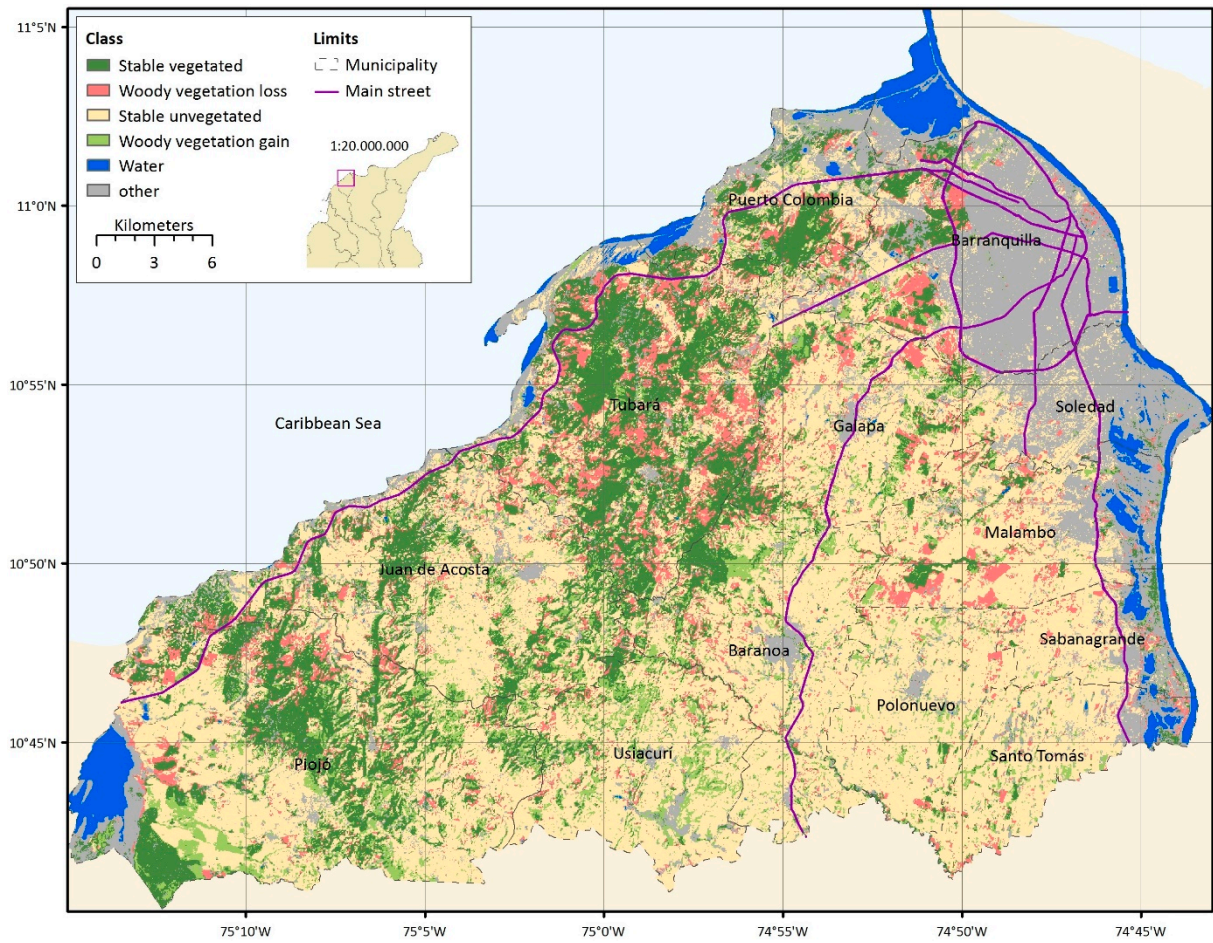


Figure S3. Vegetation cover changes in the hinterland of Barranquilla between 2001 and 2010.

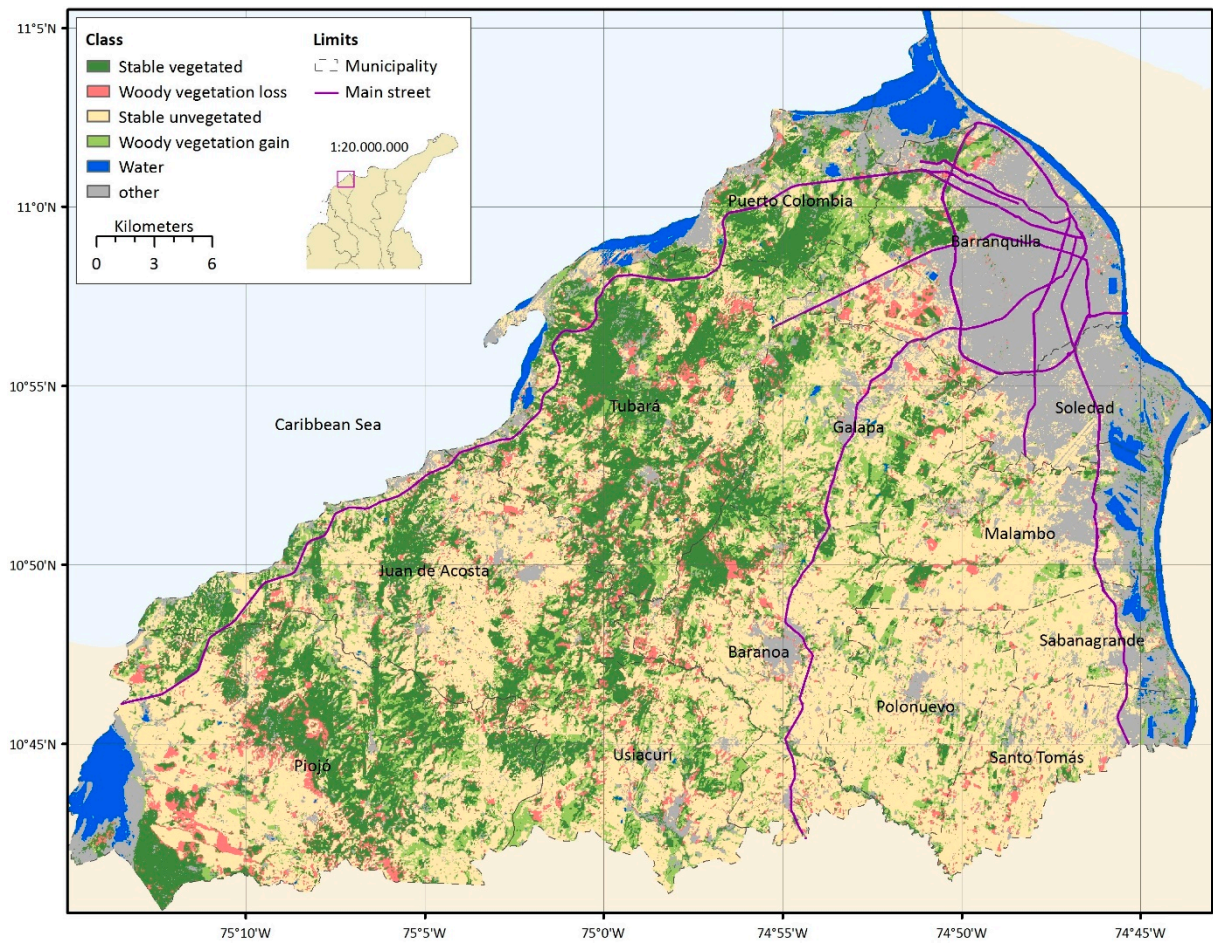


Figure S4. Vegetation cover changes in the hinterland of Barranquilla between 2010 and 2017.