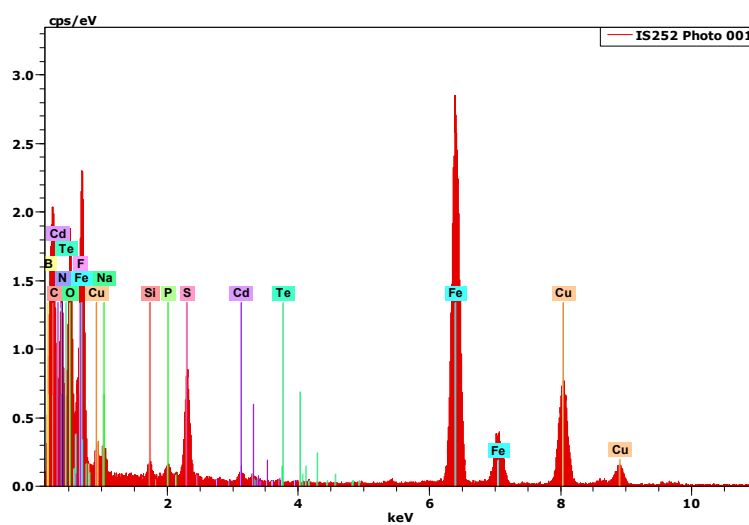
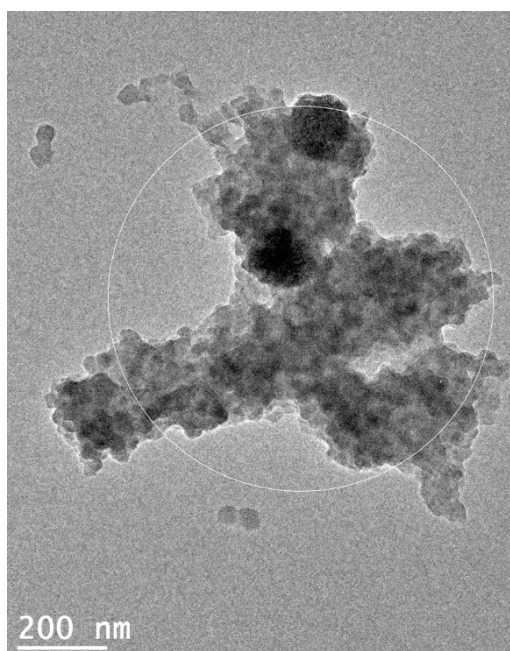
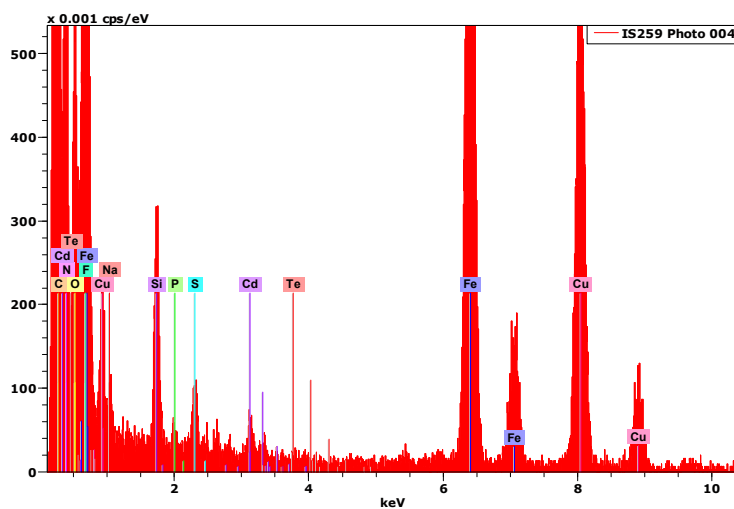
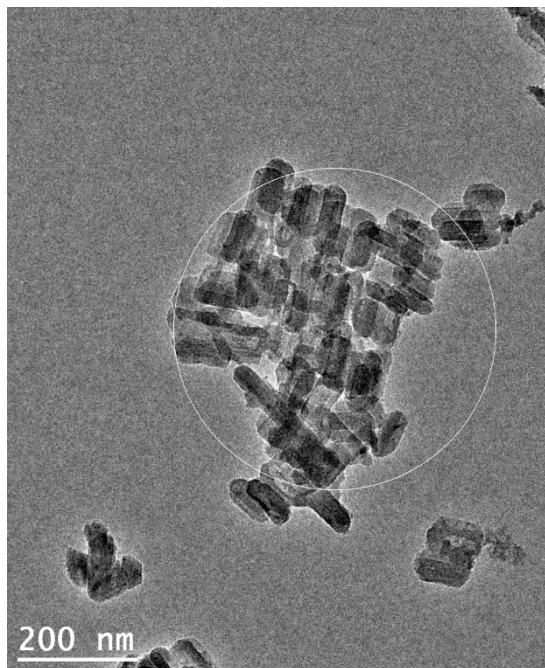


# Supplementary Materials: CdTe quantum dot fluorescence modulation by spin crossover

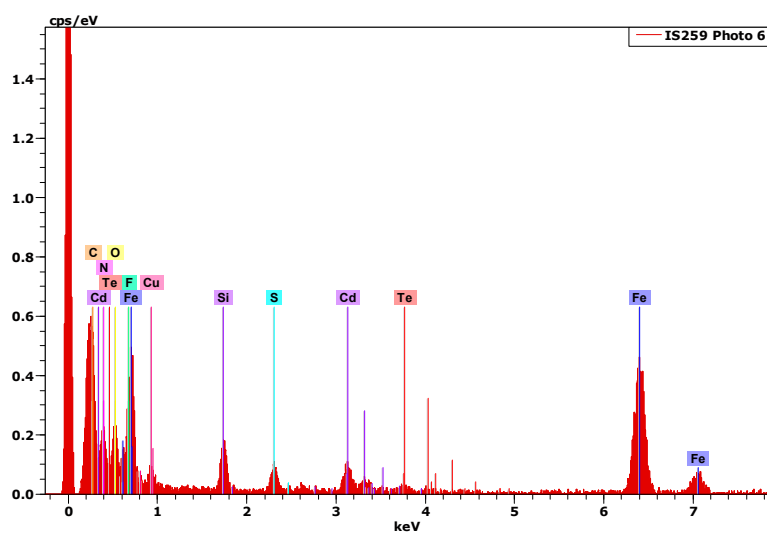
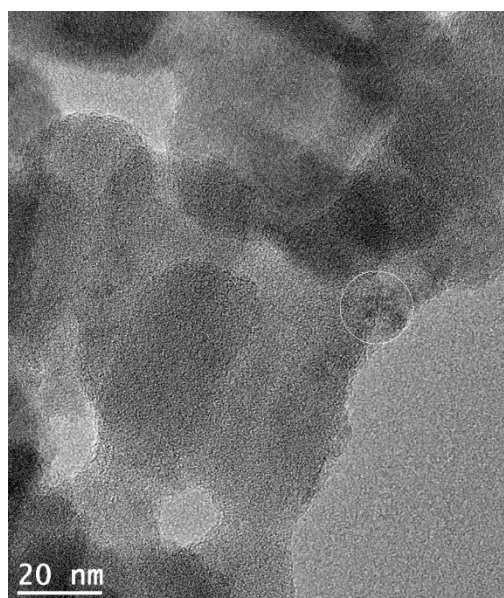
Olena Kraieva <sup>1,†</sup>, Iurii Suleimanov <sup>1,2,†</sup>, Gábor Molnár <sup>1,†</sup>,  
Lionel Salmon <sup>1,\*</sup> and Azzedine Bousseksou <sup>1,\*</sup>



**Figure S1.** HRTEM coupled EDX analyses of sample  $[\text{Fe}(\text{H-trz})_2(\text{trz})]\text{BF}_4@\text{BPEI}@\text{CdTe}$ . EDX analyses performed on the selected area indicate about 1% CdTe/Fe.



**Figure S2.** HRTEM coupled EDX analyses of sample  $[\text{Fe}(\text{H-trz})_2(\text{trz})]\text{BF}_4@ \text{SiO}_2@ \text{CdTe}$ . EDX analyses performed on the selected area indicate about 2% CdTe/Fe.



**Figure S3.** HRTEM coupled EDX analyses of sample  $[\text{Fe}(\text{H-trz})_2(\text{trz})]\text{BF}_4@\text{SiO}_2@\text{CdTe}$ . EDX analyses performed on the selected area indicate about 10% CdTe/Fe.