

Supporting information

Evaluation of an analogue of the marine ϵ -PLL peptide as a ligand of G-quadruplex DNA structures

M. Marzano^a, A. P. Falanga^a, D. Marasco^a, N. Borbone^a, S.D'Errico^a, G. Piccialli^a, G. N. Roviello^{b,*},
and G. Oliviero^c

^aDepartment of Pharmacy, University of Naples Federico II, Via Domenico Montesano 49 - 80131, Naples

^bInstitute of Biostructures and Bioimaging -CNR 1, Via Mezzocannone 16 - 80134, Naples

^cDepartment of Molecular Medicine and Medical Biotechnologies, University of Napoli Federico II, Via Sergio Pansini 5 - 80131, Naples

*correspondence to G. N. Roviello, e-mails: giovanni.roviello@cnr.it; giroviel@unina.it

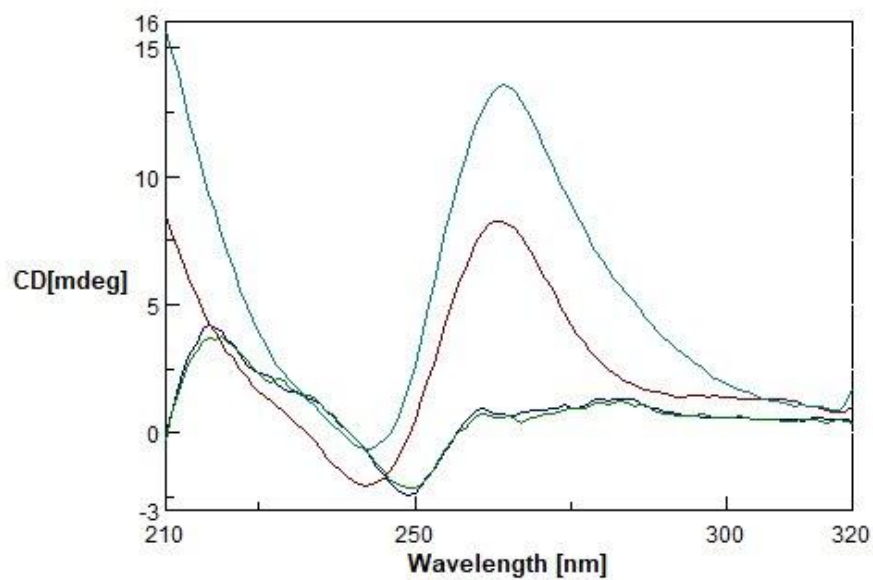


Figure S1. Sum and complex CD spectra of 2.5 μM DNA+ α,ϵ -PLL before (dA12/dT12 - green, Pu22 - red) and immediately after (dA12/dT12 - blu, Pu22 - azure) peptide addition to DNA solutions in 10 mM TRIS HCl buffer, 100 mM KCl, pH 7.4 at 15 $^{\circ}\text{C}$.

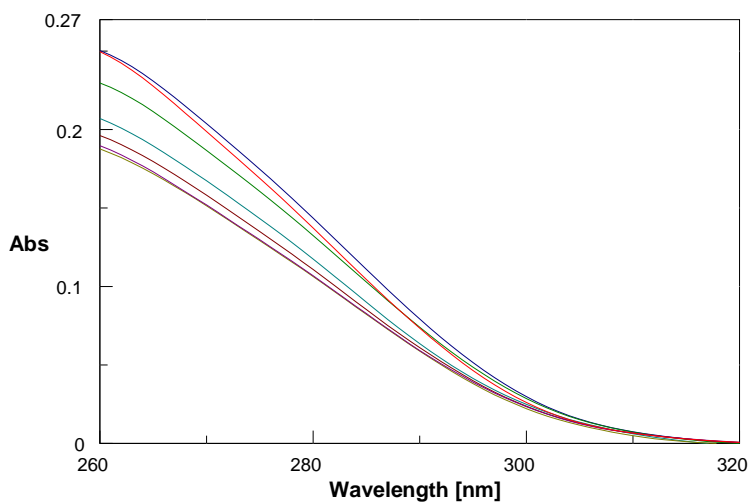


Fig S2. Expansion of the UV spectra relative to Pu22 (2.5 μM) in 10 mM TRIS HCl buffer, 100 mM KCl, pH 7.4 at 15 $^{\circ}\text{C}$ recorded before (—) and 0 (—), 24 (—), 48(—), 72(—), 96 (—), and 120 (—) h after mixing with α,ϵ -PLL (1.7 μM) in the 260-320 nm range.