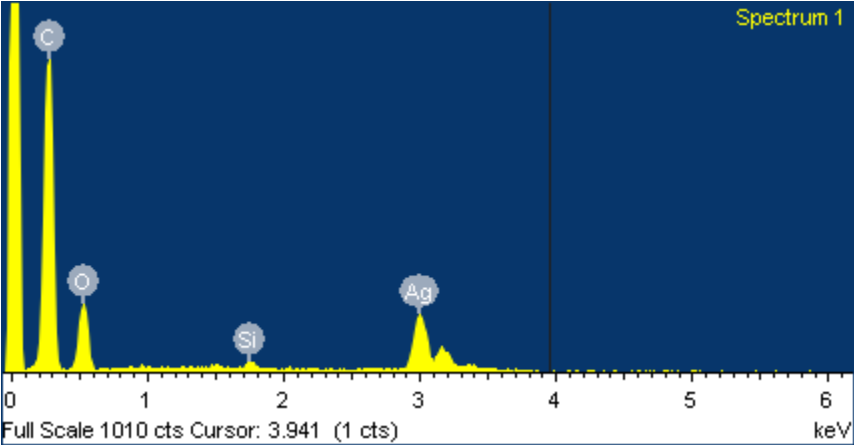
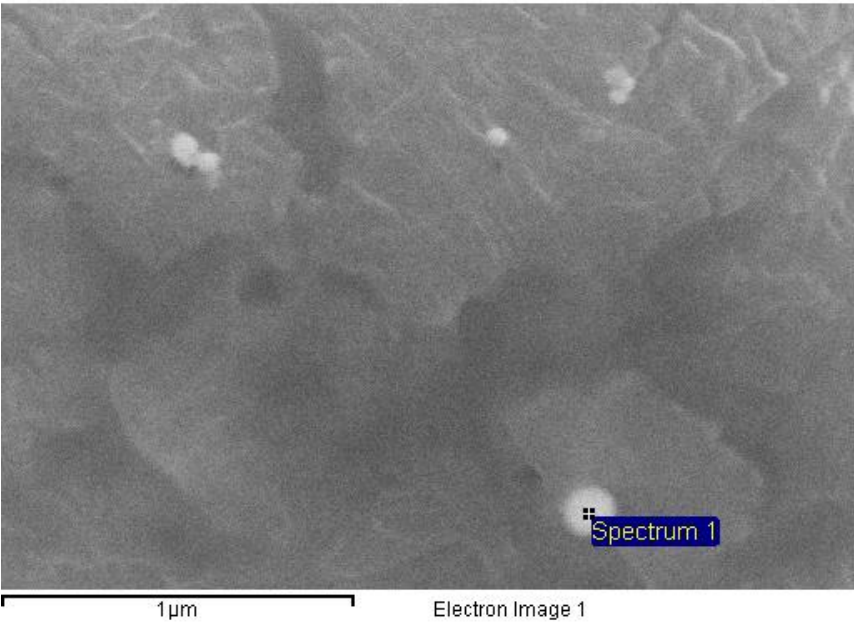
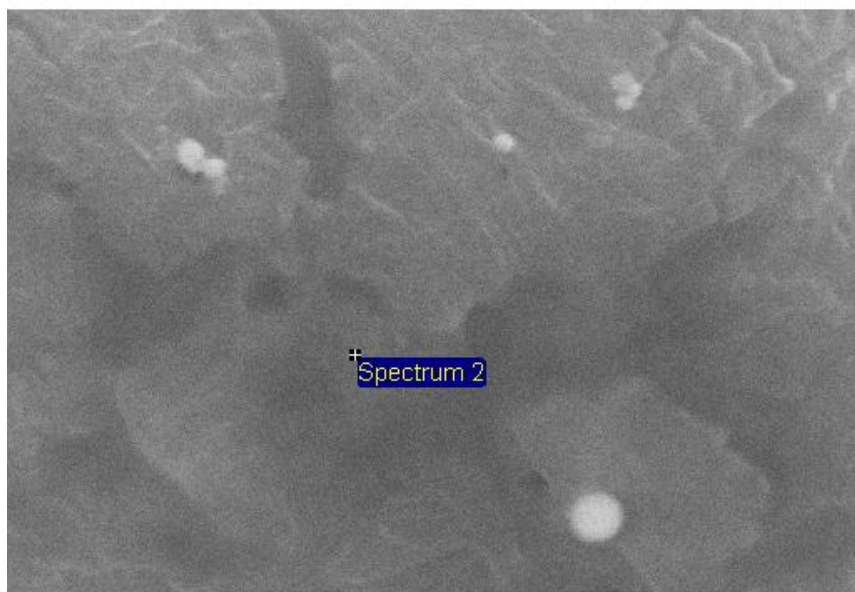


EDS analysis

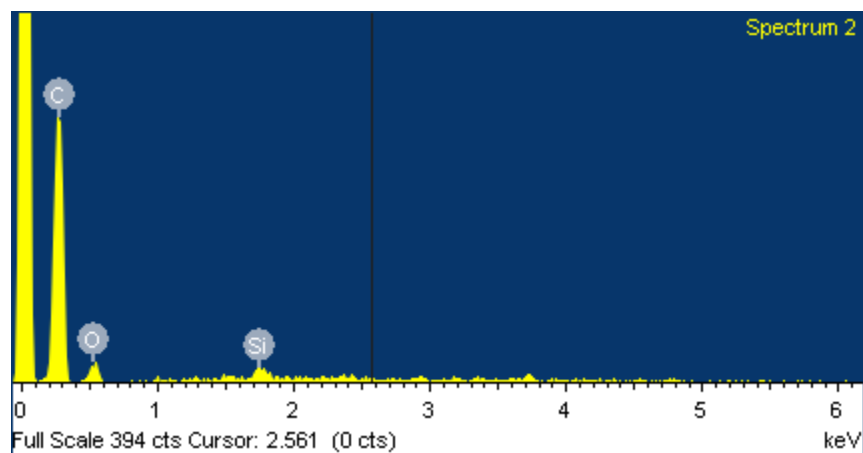


Element	Weight (%)	Atomic (%)
C K	51.00	67.34
O K	29.85	29.59
Si K	0.60	0.34
Ag L	18.55	2.73
TOTAL	100	



1 μm

Electron Image 1



Element	Weight (%)	Atomic (%)
C K	82.29	86.54
O K	16.16	12.76
Si K	1.54	0.69
TOTAL	100	