

Supplementary Materials: Molecular Docking and Aberration-Corrected STEM of Palladium Nanoparticles on Viral Templates

Liliana Carreño-Fuentes, Daniel Bahena, Laura A. Palomares, Octavio T. Ramírez, Miguel José-Yacamán and Germán Plascencia-Villa

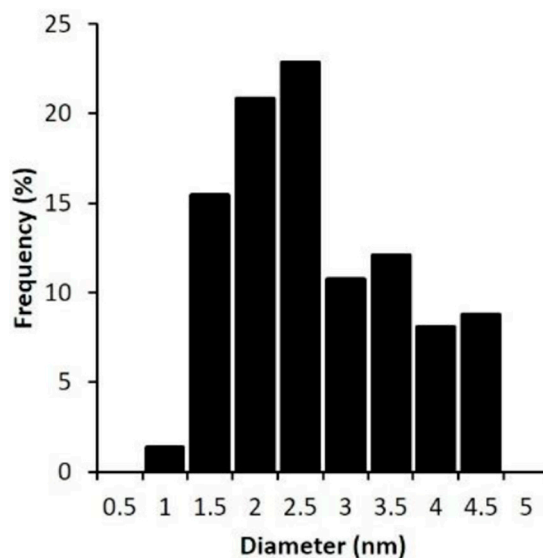


Figure S1. Histogram of Pd nanoparticles measured from atomic resolution Cs-STEM imaging. Mean diameter of 2.5 ± 1.02 nm, size range from 1 to 5 nm.

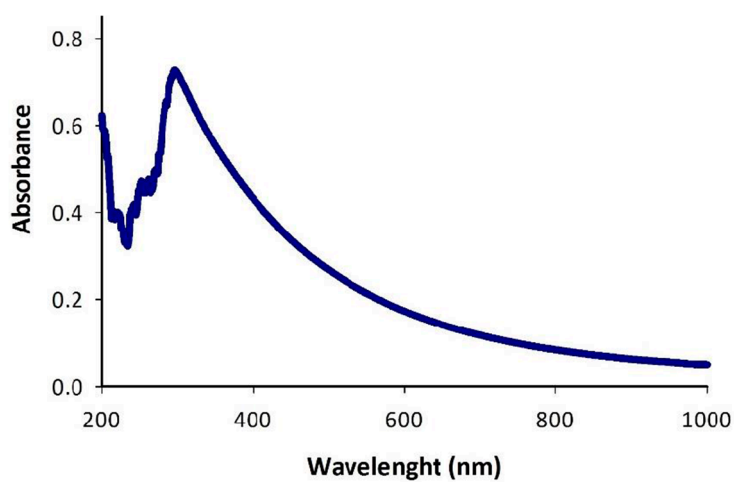


Figure S2. Absorbance spectroscopy. UV-Vis absorption spectra of VP6 nanotubes functionalized with Pd nanoparticles.

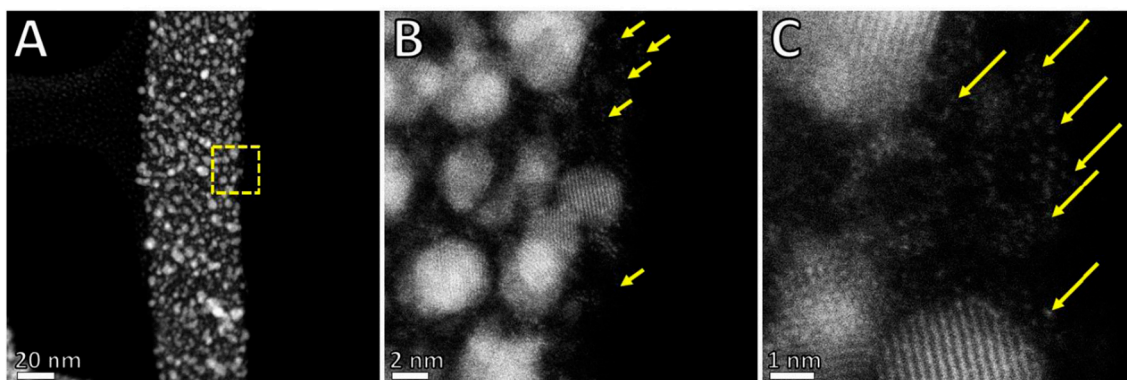


Figure S3. Atomic resolution Cs-STEM imaging. (A) HAADF-STEM imaging. (B) High magnification HAADF-STEM imaging region indicated in (A). (C) High magnification HAADF-STEM imaging region indicated in (B). Imaging with JEM ARM-200F (JEOL), operated at accelerating voltage of 80 kV in STEM mode.

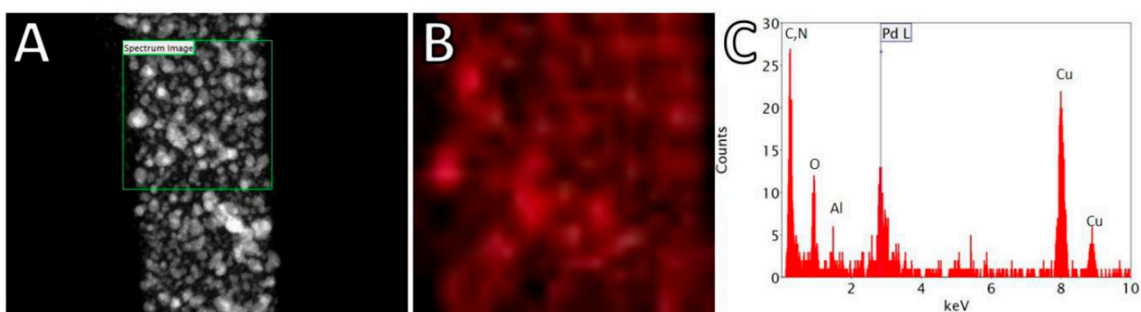


Figure S4. Atomic resolution Cs-STEM imaging and EDX mapping. (A) HAADF-STEM imaging. (B) EDX mapping of Pd of region indicated in (A). (C) EDX spectra corresponding to region indicated in (A). Imaging with JEM ARM-200F (JEOL), operated at accelerating voltage of 80 kV in STEM mode.