

Compound 1 Bark of *Chisocheton pentandrus* (Meliaceae).

Table of Contents	Page
Figure S1. ¹ H-NMR Spectrum of 1 (500 MHz in CDCl ₃).	2
Figure S2. ¹³ C-NMR Spectrum of 1 (125 MHz in CDCl ₃).	3
Figure S3. DEPT-135° Spectrum of 1 (in CDCl ₃).	4
Figure S4. HSQC Spectrum of 1 .	5
Figure S5. HMBC Spectrum of 1 .	6
Figure S6. ¹ H- ¹ H-COSY Spectrum of 1 .	7
Figure S7. NOE-1D Spectrum of 1 (500 MHz in CDCl ₃).	8
Figure S8. HRESI-TOF-MS Spectrum of 1 .	9
Figure S9. TLC profile of 1	10

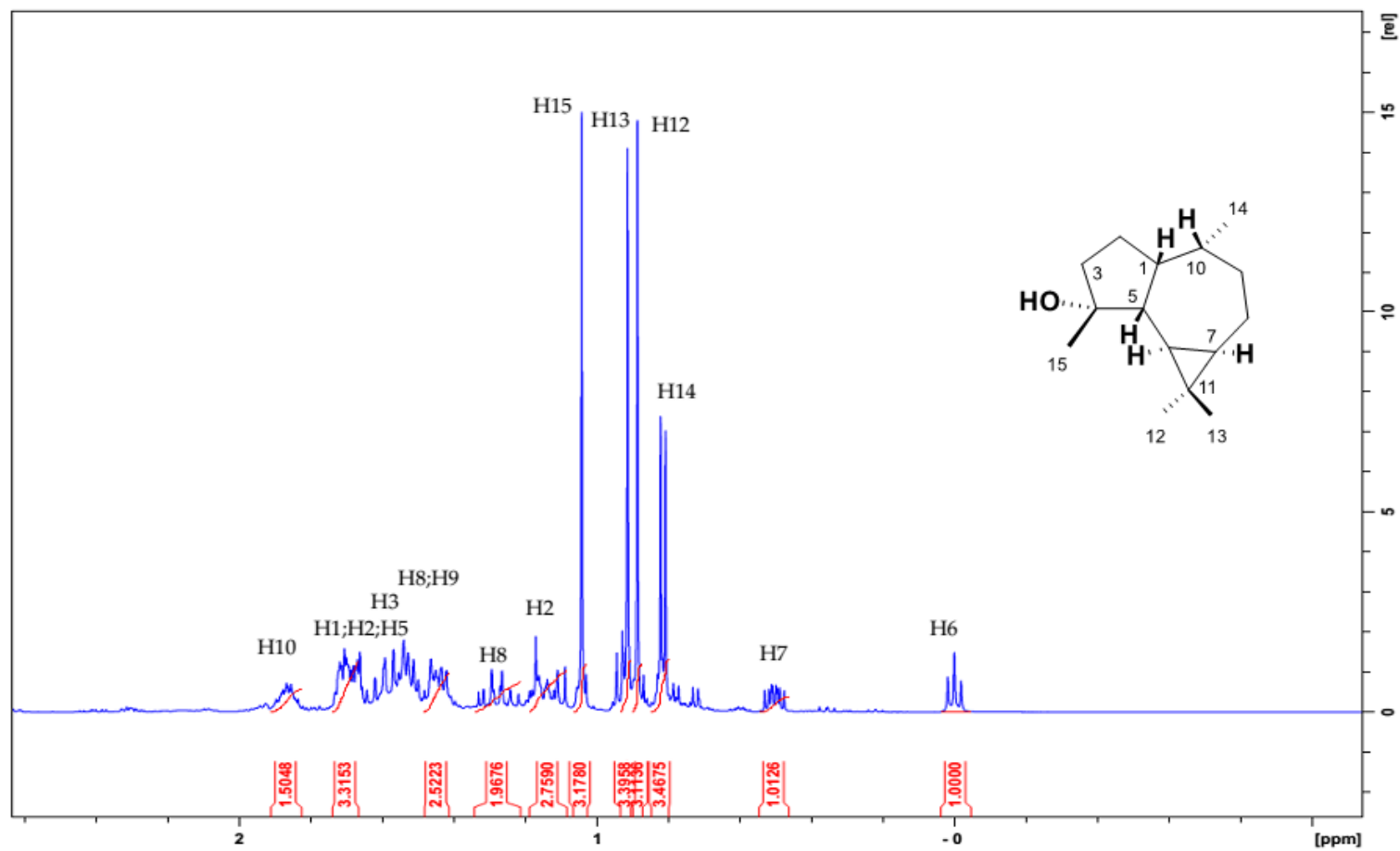


Figure S1. ¹H-NMR Spectrum of **1** (500 MHz in CDCl₃).

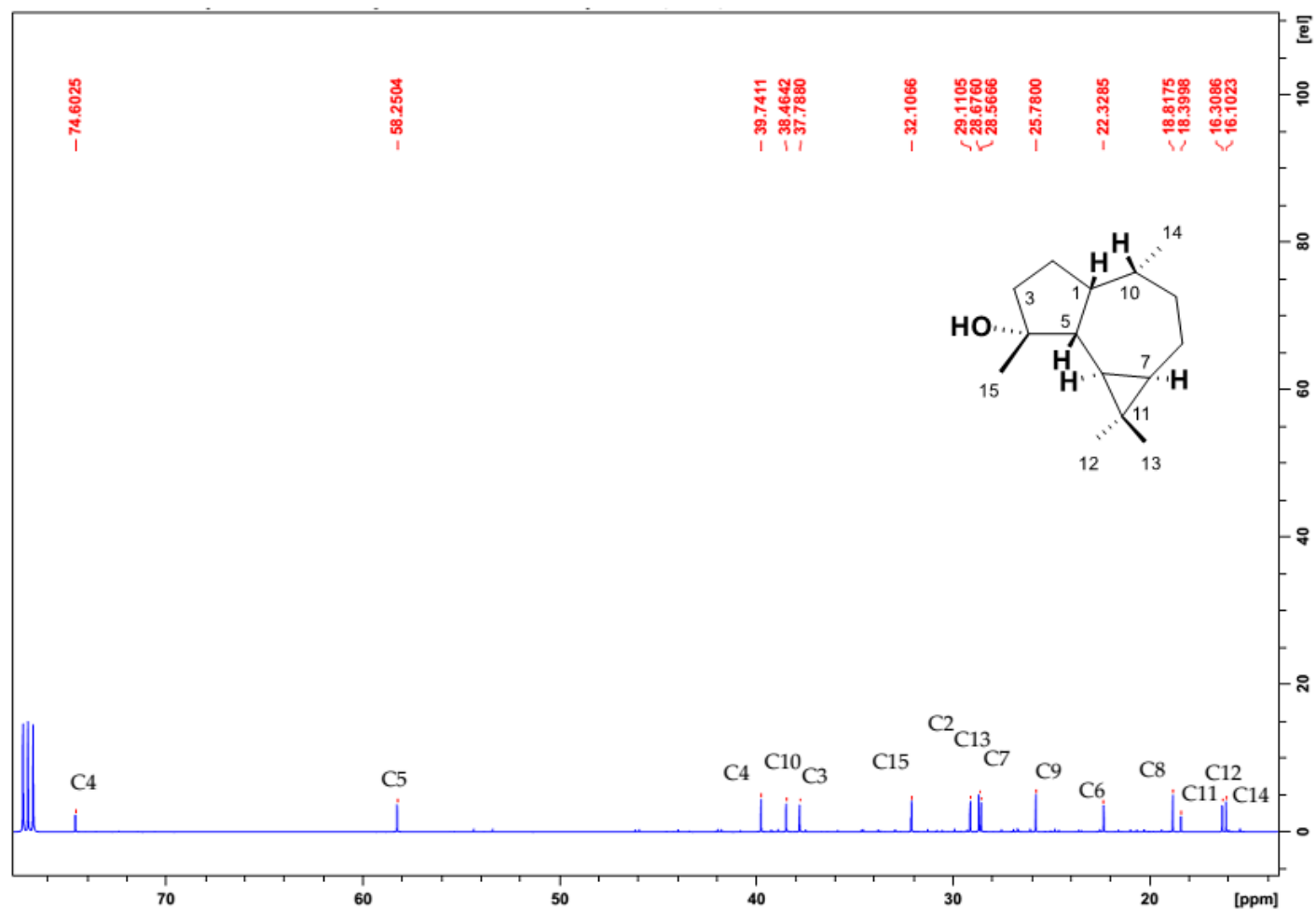


Figure S2. ¹³C-NMR Spectrum of 1 (125 MHz in CDCl₃).

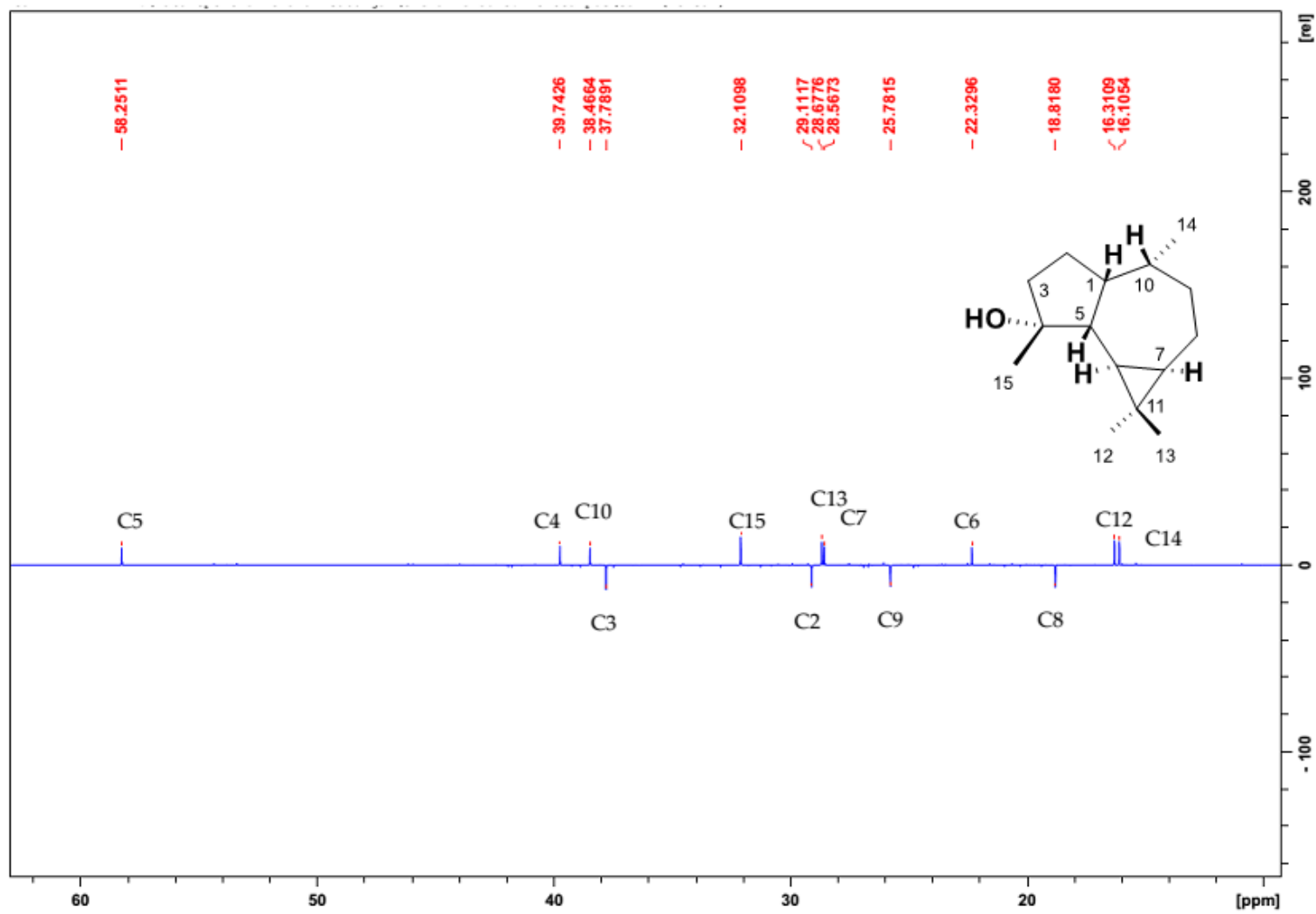


Figure S3. DEPT-135° Spectrum of 1 (in CDCl₃).

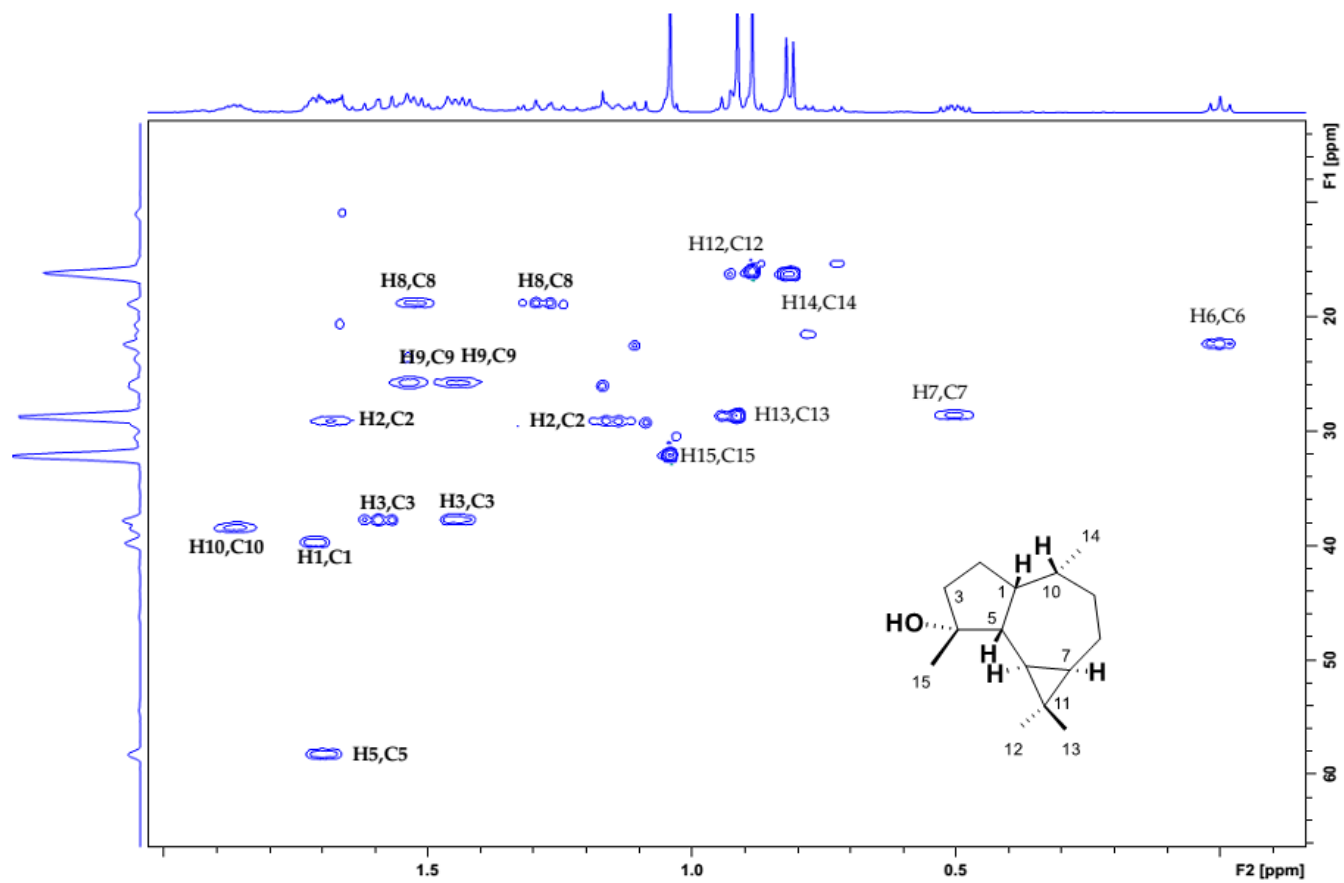


Figure S4. HSQC Spectrum of 1.

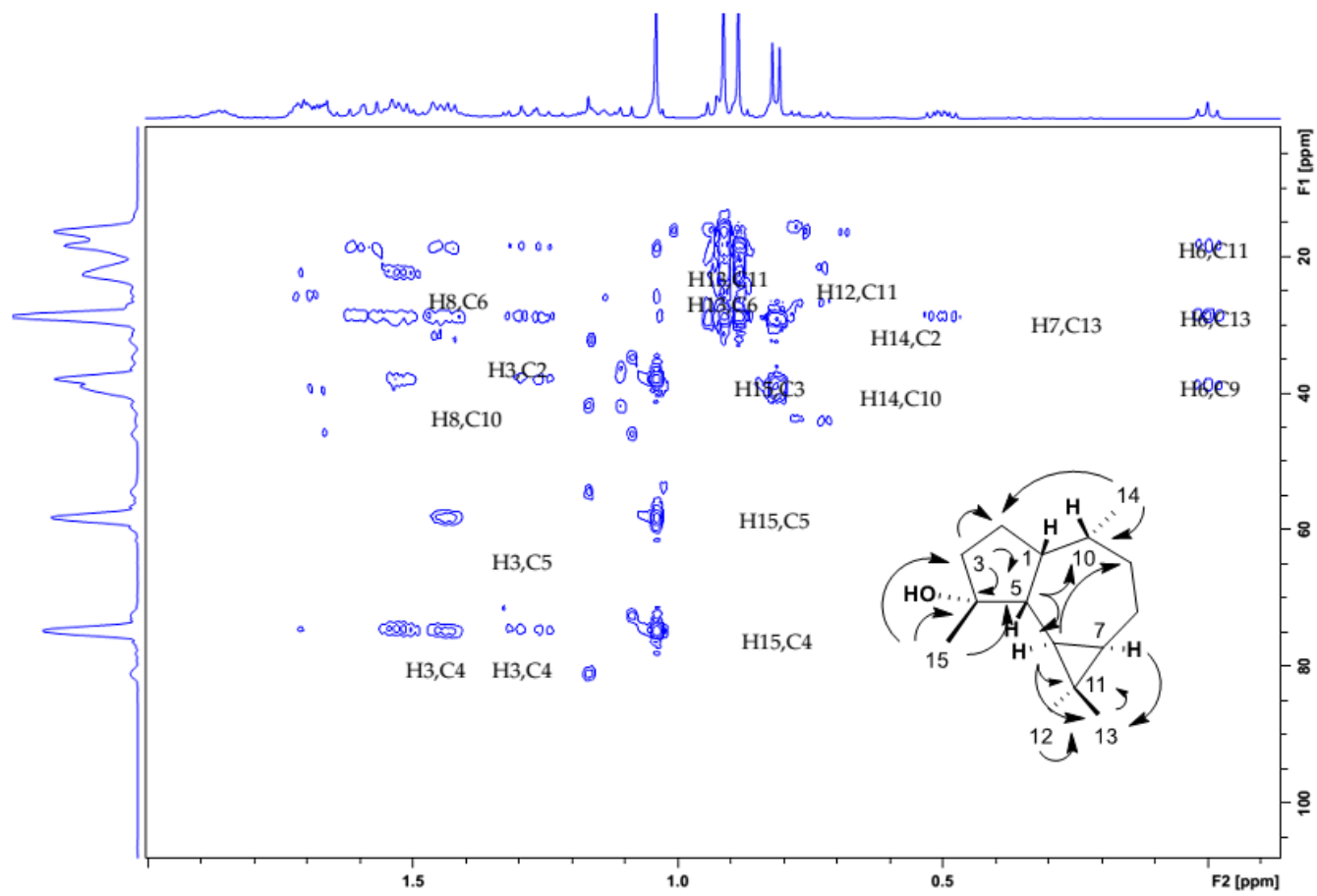


Figure S5. HMBC Spectrum of 1.

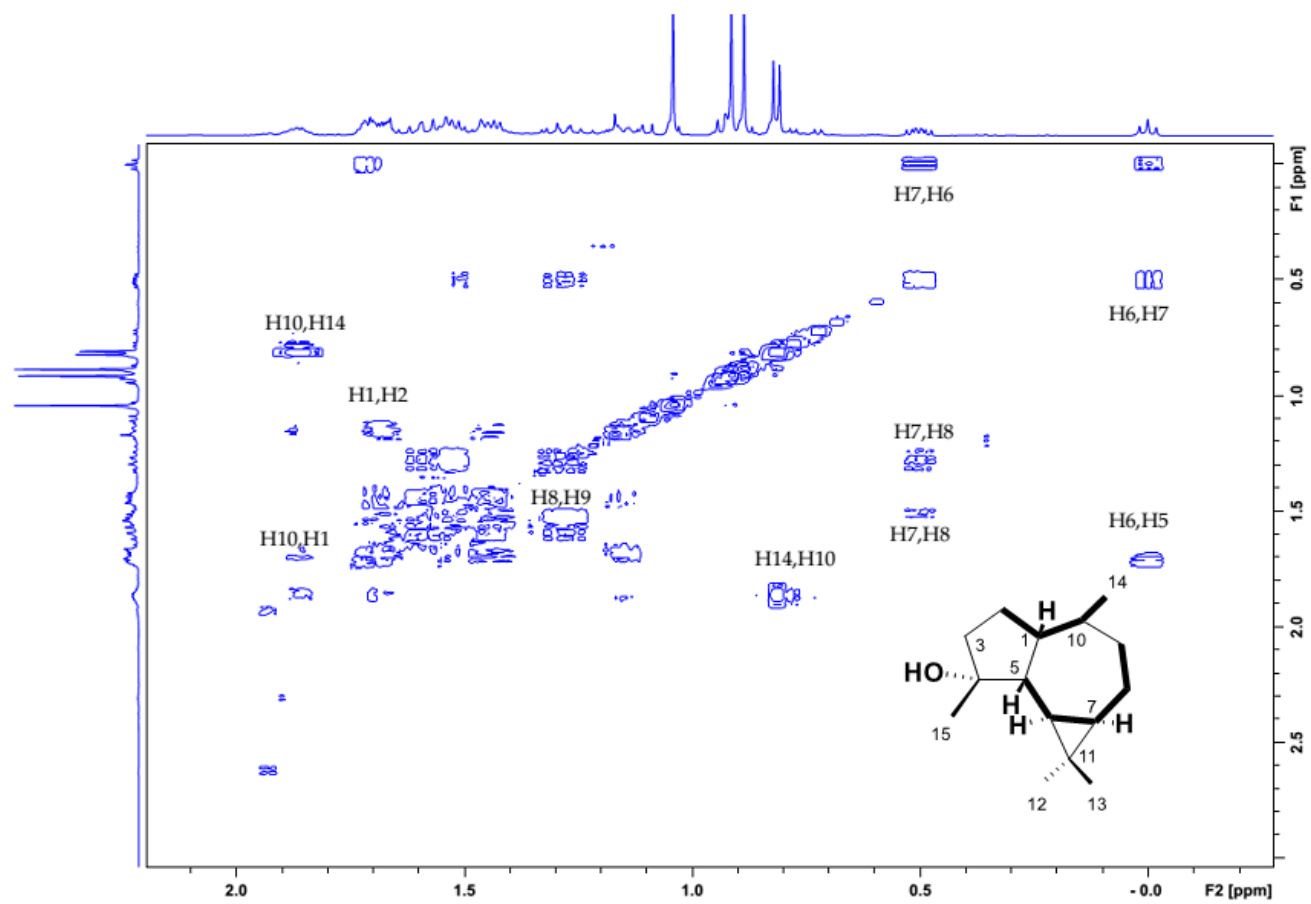


Figure S6. ^1H - ^1H -COSY Spectrum of 1.

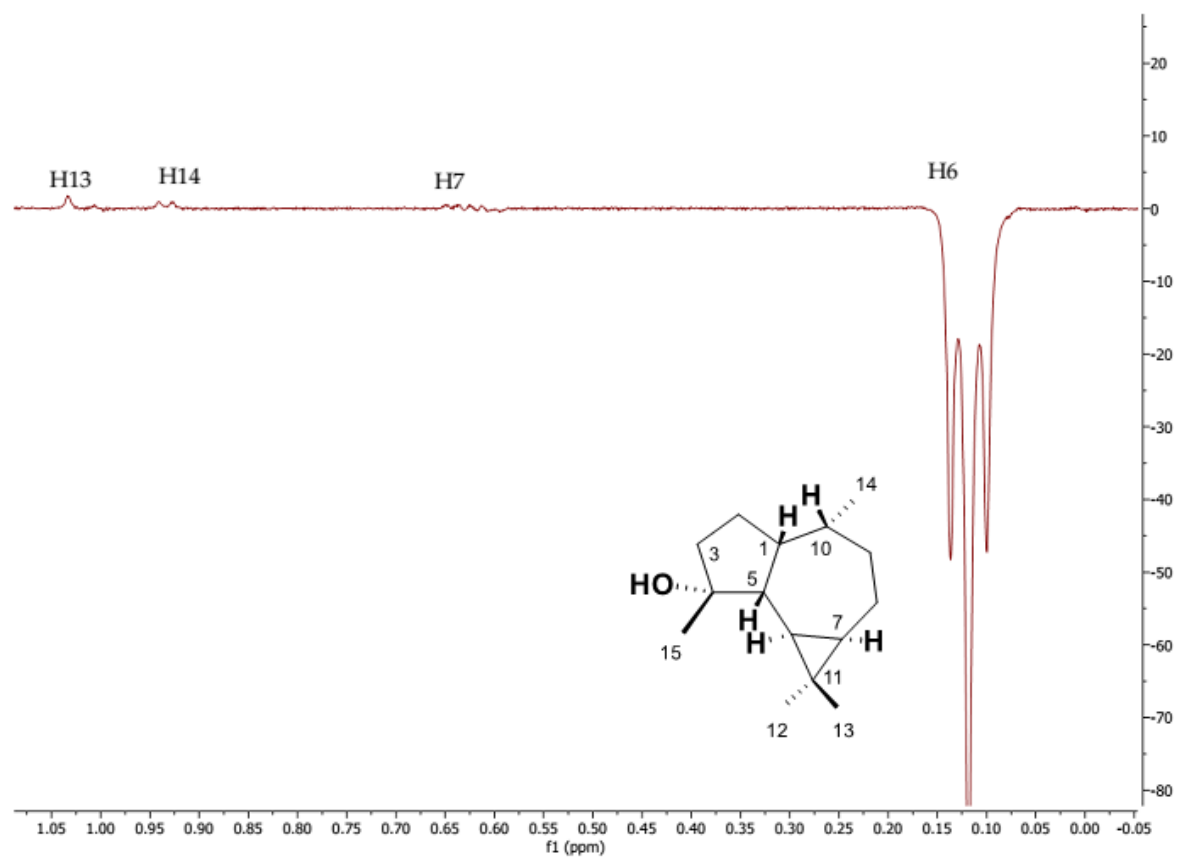


Figure S7. NOE-1D Spectrum of 1 (500 MHz in CDCl₃).

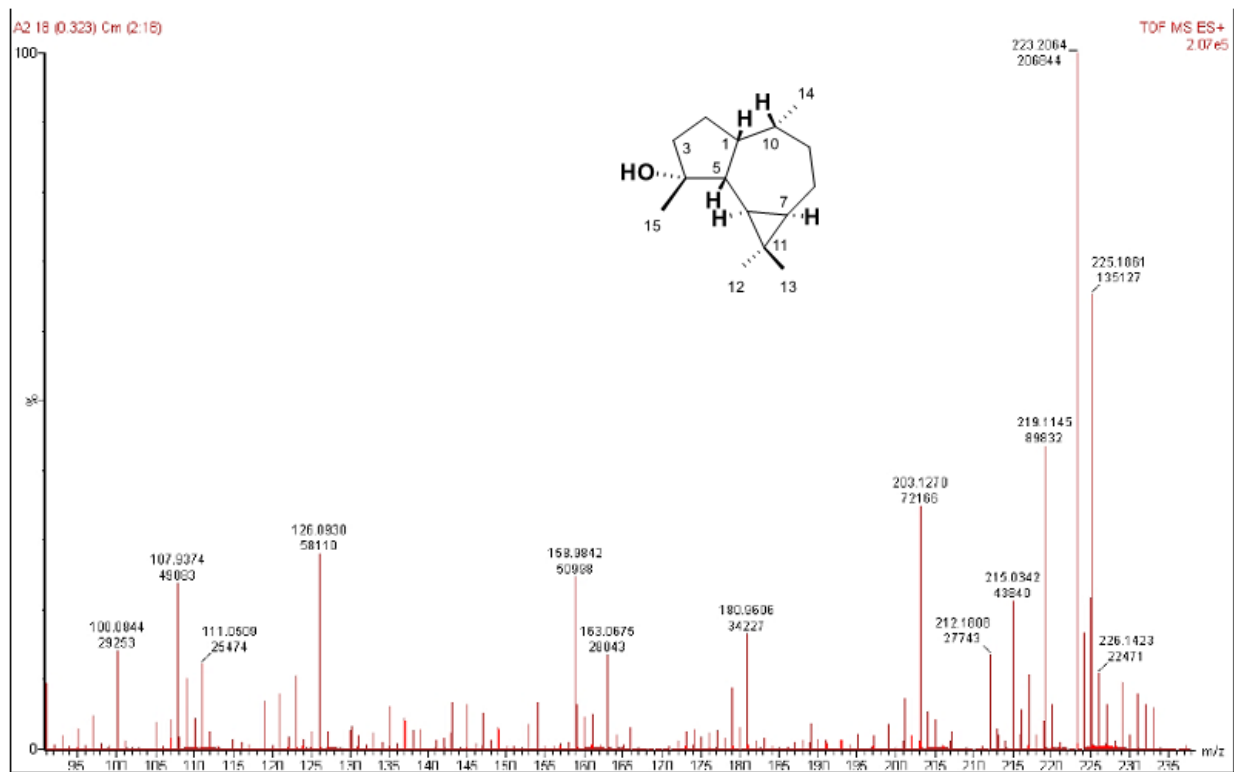
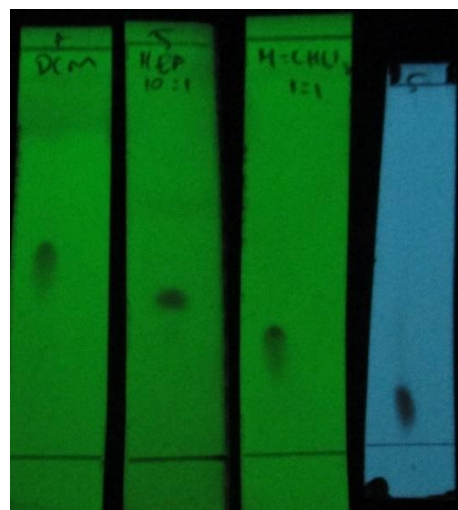
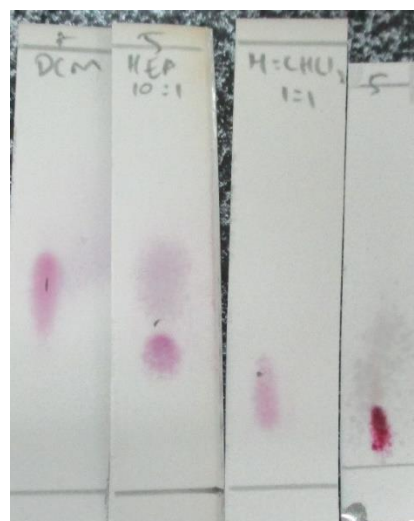


Figure S8. HRESI-TOF-MS Spectrum of 1.



1A 1B 1C 1D



2A. 2B 2C 2D

Figure S9. TLC profile of **1**. TLC profile of **1** in UV 254 nm (1), TLC profile of **1** in Vis after spraying with 10 % H₂SO₄ in EtOH (2), mobile phase A: CH₂Cl₂, mobile phase B: n-hexane-EtOAc (10:1), mobile phase C: hexane-CHCl₃ (1:1), mobile phase D in RP-TLC: MeOH-H₂O (8:2)