

Supplementary materials

Ethyl (S)-2-Benzamido-5-[(4,6-dimethylpyrimidin-2-yl)amino]pentanoate

Mario A. Leyva-Acuña ¹, Francisco Delgado-Vargas ², Gabriela López-Angulo ¹ and Julio Montes-Avila ^{1,2,*}

¹ Programa Regional de Posgrado en Biotecnología, Facultad de Ciencias Químico-Biológicas, Universidad Autónoma de Sinaloa, Ciudad Universitaria, 80010 Culiacán, Sin., México; mario.aley@outlook.com (M.A.L.A.); gabylpz06@gmail.com (G.L.A.)

² Programa de Posgrado en Ciencias Biomédicas, Facultad de Ciencias Químico-Biológicas, Universidad Autónoma de Sinaloa, Ciudad Universitaria, 80010 Culiacán, Sin., México; fdelgado@uas.edu.mx (F.D.V.)

* Correspondence: jmontes@uas.edu.mx; Tel.: +52 (667) 160 9036

Contents:

Figure S1: UV-Vis spectrum of compound **3**

Figure S2: FTIR-ATR spectrum of compound **3**

Figure S3: ¹H-NMR spectrum (400 MHz, CDCl₃) of compound **3**

Figure S4: ¹³C-NMR spectrum (101 MHz, CDCl₃) of compound **3**

Figure S5: HRMS of compound **3**

Figure S6: EI-MS of compound **3**

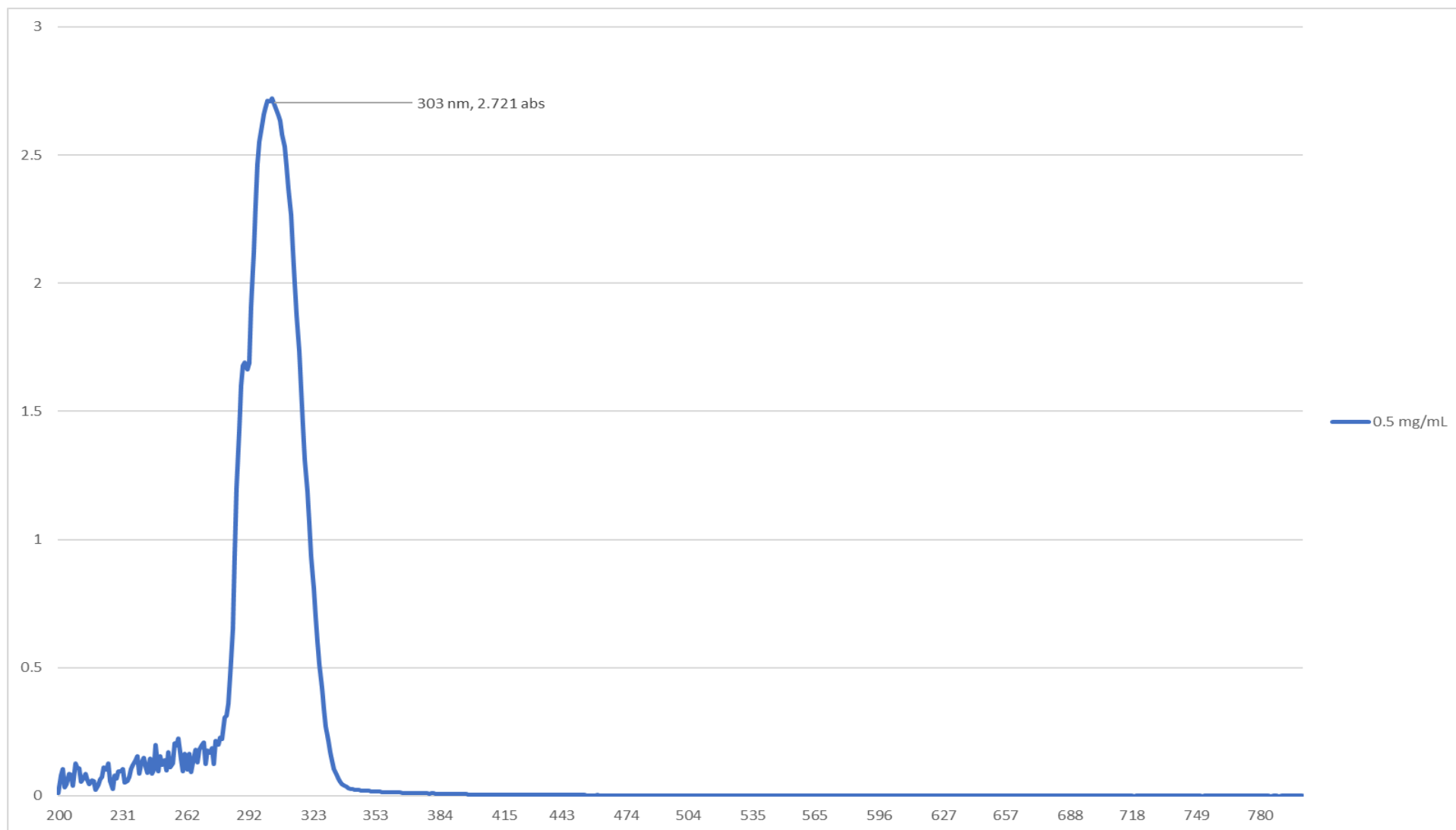


Figure S1: UV-Vis spectrum of compound 3

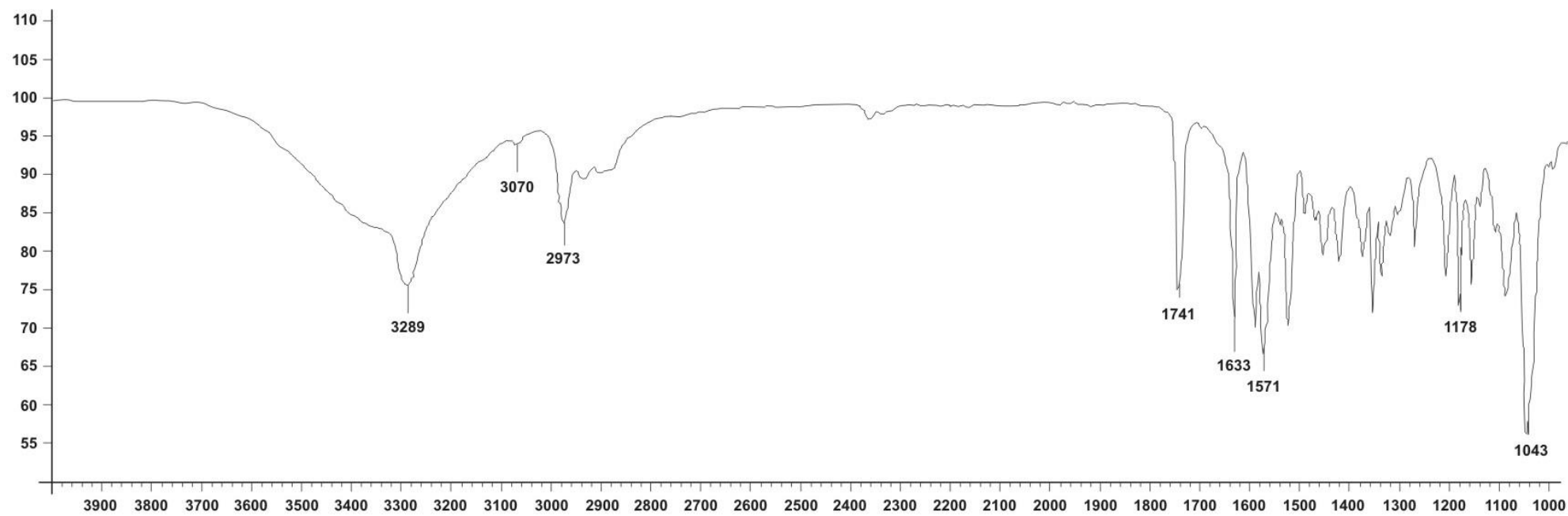


Figure S2: FTIR-ATR spectrum of compound 3

7193
single_pulse

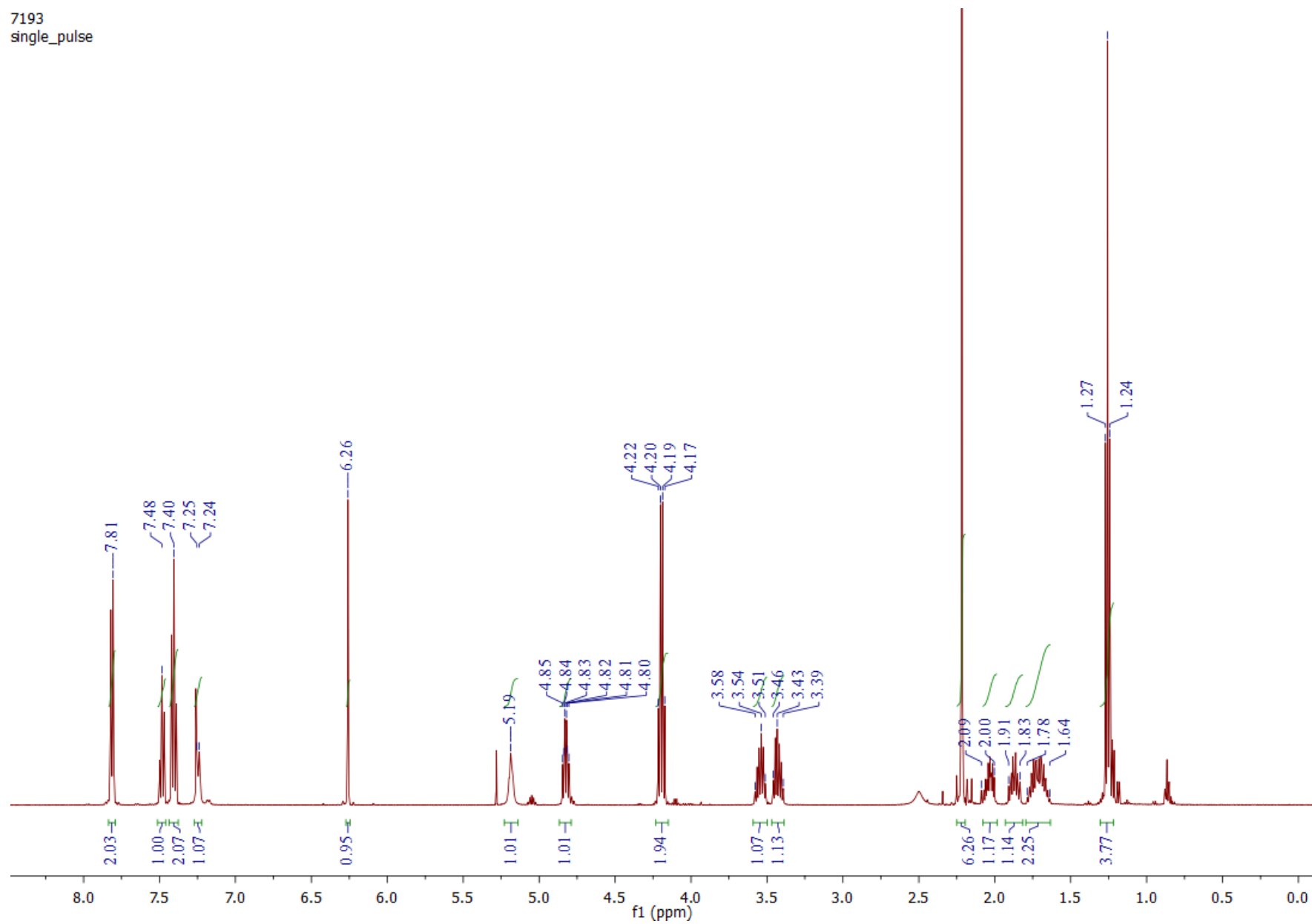


Figure S3: ¹H-NMR spectrum (400 MHz, CDCl₃) of compound 3

7193
single pulse decoupled gated NOE

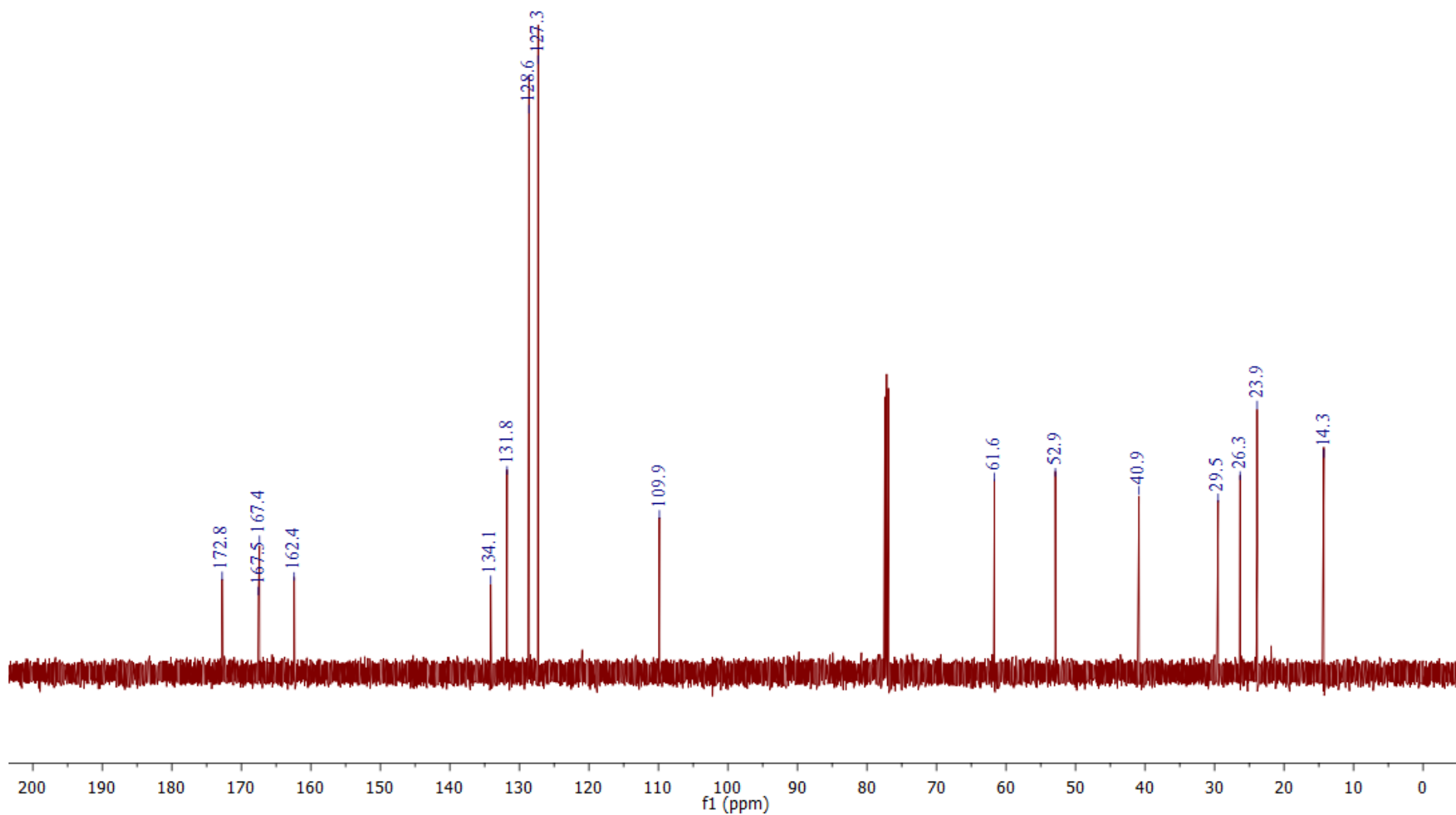


Figure S4: ¹³C-NMR spectrum (101 MHz, CDCl₃) of compound 3



Servicio de Espectrometría de Masas
MStation JMS-700 JEOL Alta Resolución
Centro de Investigaciones Químicas UAEM
Tel. 329-79-97 ext.6013



```
[ Elemental Composition ]
Data : MOPAD002                               Date : 08-Sep-2016 09:50
Sample: PAA10                                  Operator Name:Ing. Victoria Labastida
Note : Dr.Mario Ordoñez/Dr. Adrián Centro de Investigaciones Químicas UAEM
Inlet : Direct                                 Ion Mode : EI+
RT : 0.49 min                                  Scan#: 8
Elements : C 40/0, H 49/0, O 3/0, N 4/0
Mass Tolerance      : 1000ppm, 3mmu if m/z < 3, 5mmu if m/z > 5
Unsaturation (U.S.) : -0.5 - 10.0

Observed m/z  Int%  Err[ppm / mmu]  U.S.  Composition
  370.2038    100.0    +9.0 / +3.3    10.0  C 20 H 26 O 3 N 4
```

Figure S5: HRMS of compound 3

[Mass Spectrum]

Data : MOPAD001

Date : 08-Sep-2016 09:48

Sample: PAA10

Operator Name: Ing. Victoria Labastida G

Note : Dr. Mario Ordonez/Dr. Adrian Centro de Investigaciones Quimicas UAEM

Inlet : Direct

Ion Mode : EI+

Spectrum Type : Normal Ion [MF-Linear]

RT : 0.00 min Scan# : (1,2)

BP : m/z 136.0000 Int. : 259.50

Output m/z range : 40.0000 to 652.2849

Cut Level : 0.00 %

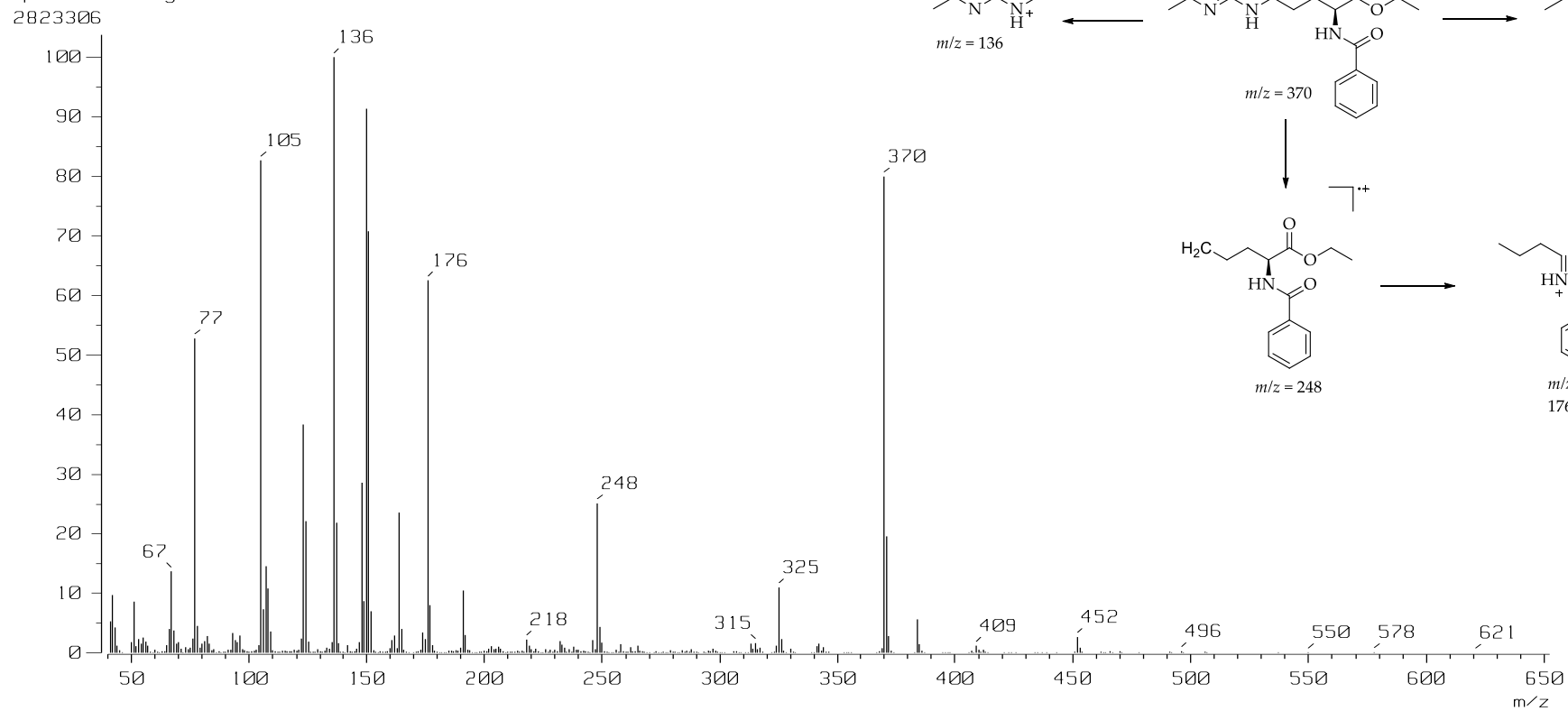


Figure S6: EI-MS of compound 3