

Supplementary content

Phenolic glycosides from *Capsella bursa-pastoris* (L.) Medik and their biological activity

Joon Min Cha ¹, Won Se Suh ¹, Tae Hyun Lee ¹, Lalita Subedi ^{2,3}, Sun Yeou Kim ^{2,3}, and Kang Ro Lee ^{1,*}

¹Natural Products Laboratory, School of Pharmacy, Sungkyunkwan University, Suwon 16419, Republic of Korea

²Gachon Institute of Pharmaceutical Science, Gachon University, 191 Hambakmoero, Yeonsu-gu, Incheon 21936, Republic of Korea

³College of Pharmacy, Gachon University, 191 Hambakmoero, Yeonsu-gu, Incheon 21936, Republic of Korea

Correspondence to:

Prof. Dr. Kang Ro Lee - Tel: 82-31-290-7710; Fax: 82-31-290-7730; E-mail: krlee@skku.edu

Supporting Information Contents

Fig. S1 ^1H NMR spectrum of 1 (700 MHz, CD_3OD)	S5
Fig. S2 ^{13}C NMR spectrum of 1 (175 MHz, CD_3OD)	S6
Fig. S3 HSQC spectrum of 1	S7
Fig. S4 HMBC spectrum of 1	S8
Fig. S5 ^1H - ^1H COSY spectrum of 1	S9
Fig. S6 NOESY spectrum of 1	S10
Fig. S7 HR-FAB-MS spectrum of 1	S11
Fig. S8 CD spectra of compound 1	S12

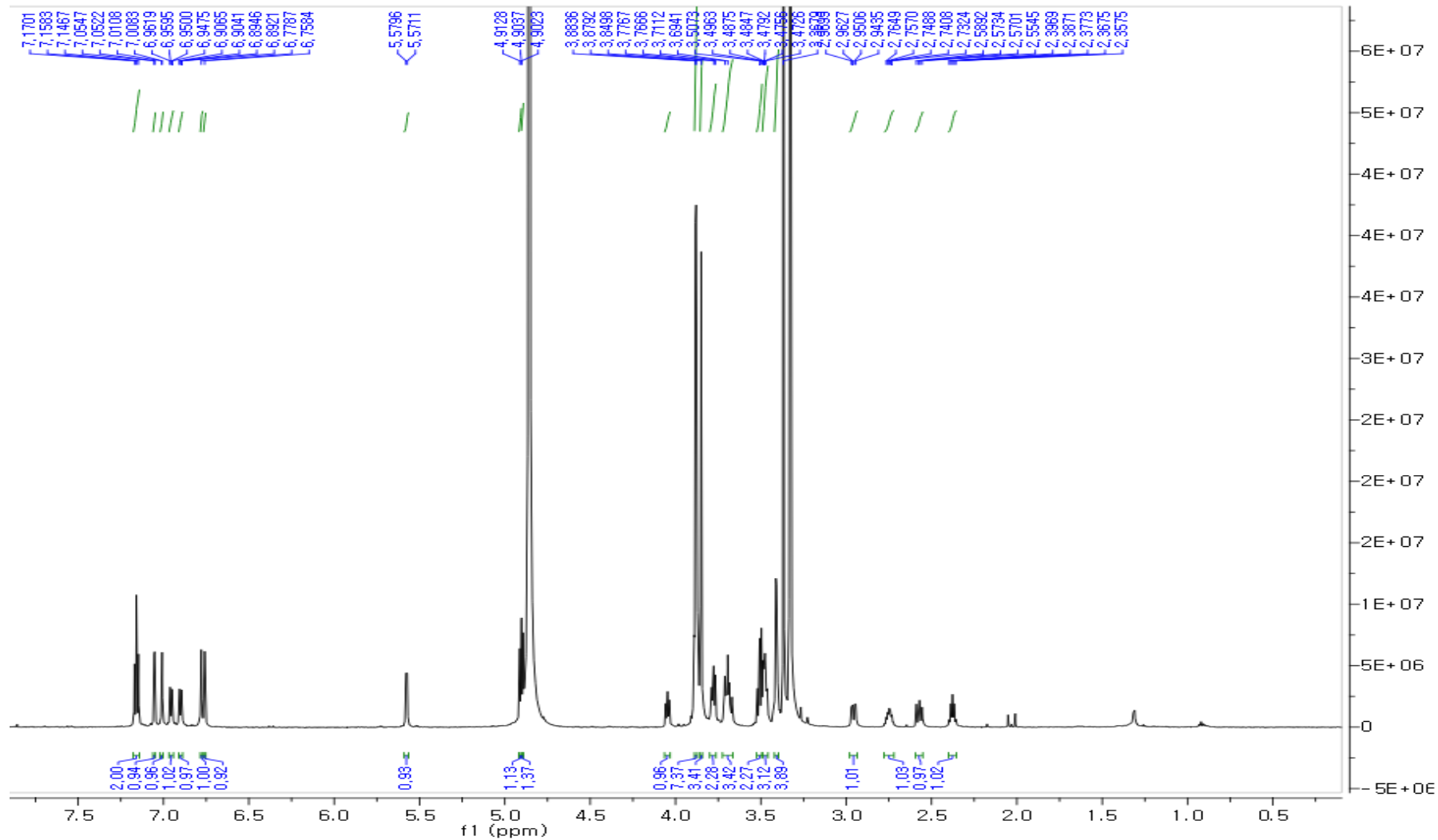


Fig. S1. ^1H NMR spectrum of **1** (700 MHz, CD_3OD)

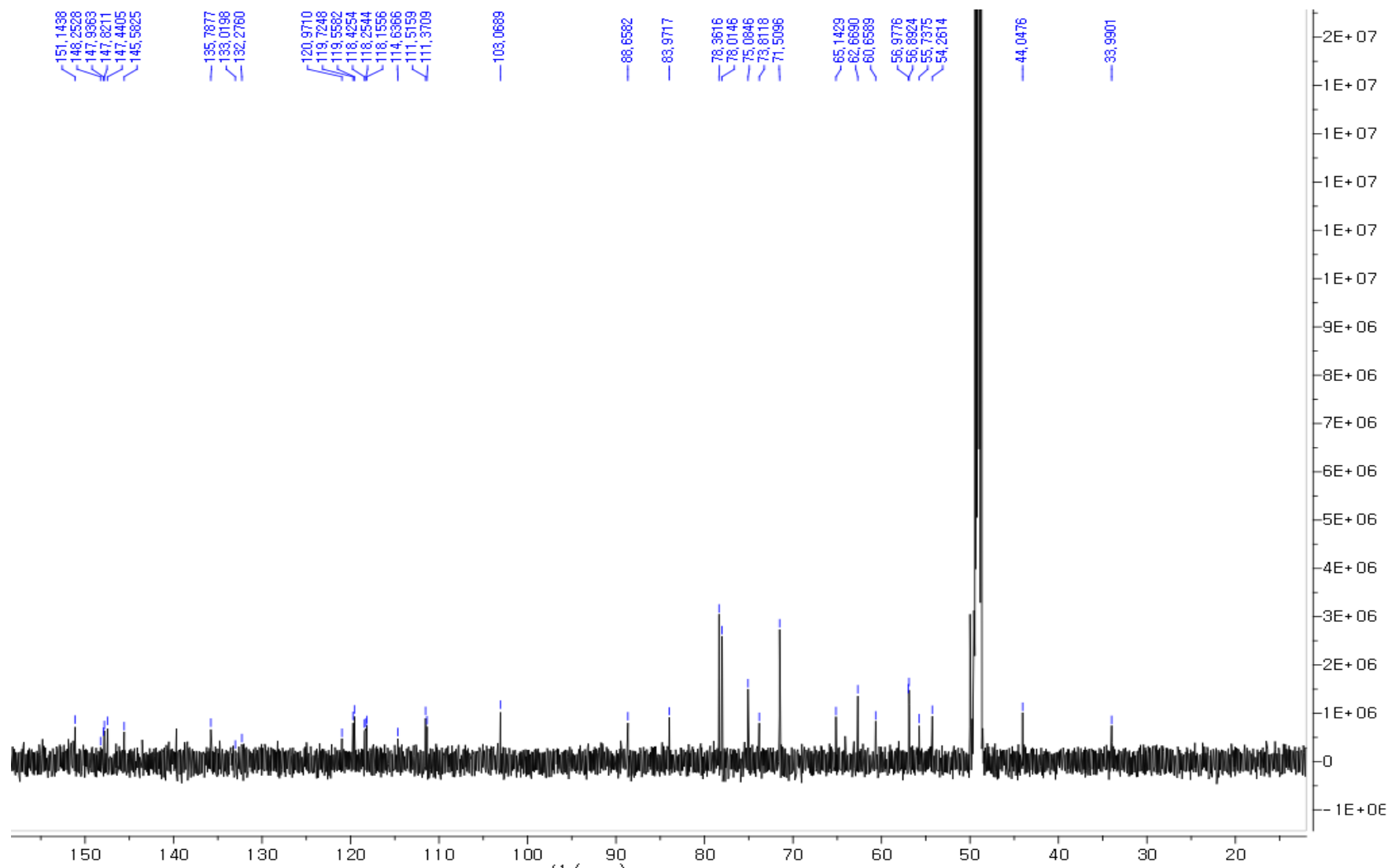


Fig. S2. ^{13}C NMR spectrum of **1** (175 MHz, CD_3OD)

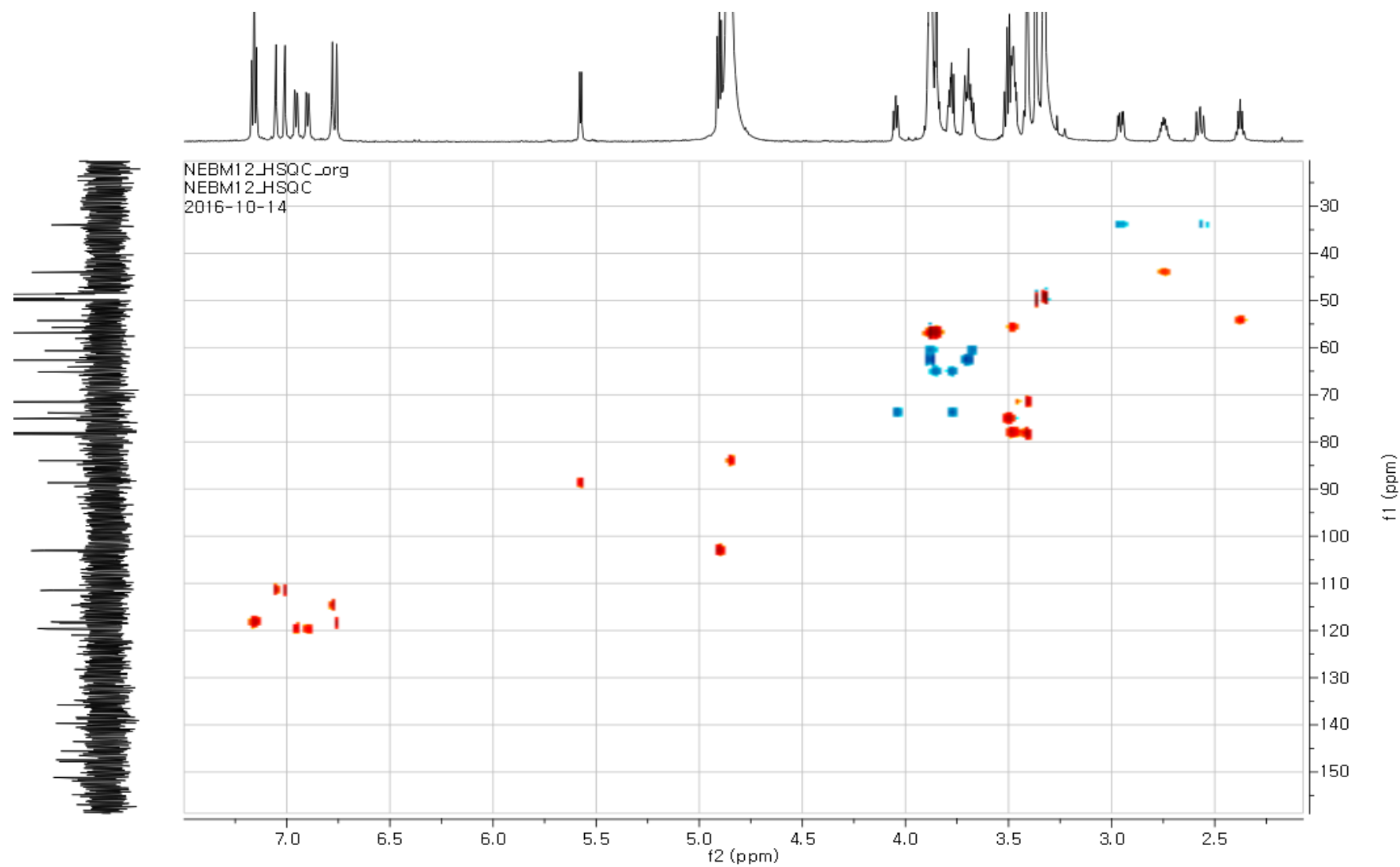


Fig. S3. HSQC spectrum of **1**

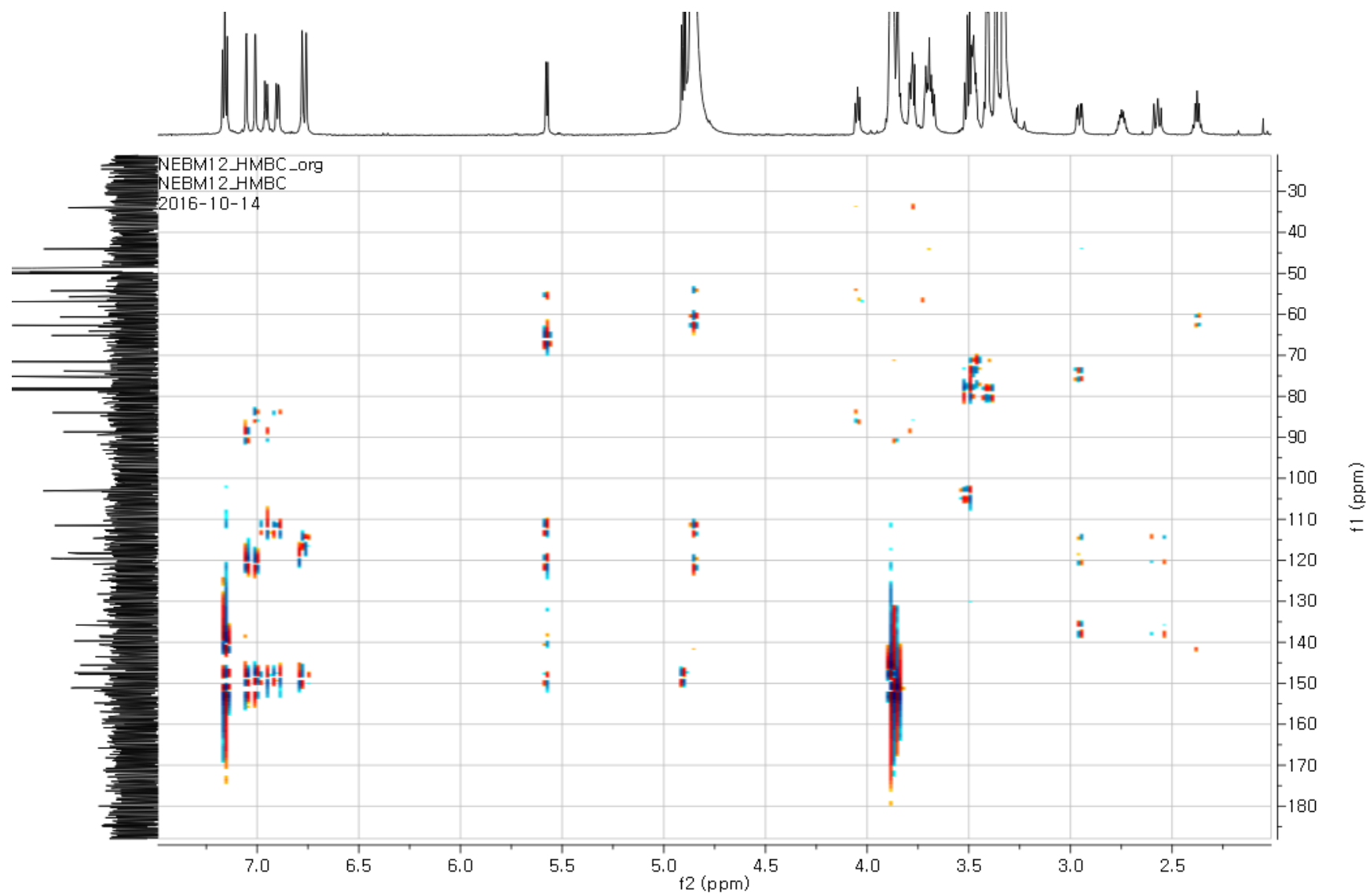


Fig. S4. HMBC spectrum of **1**

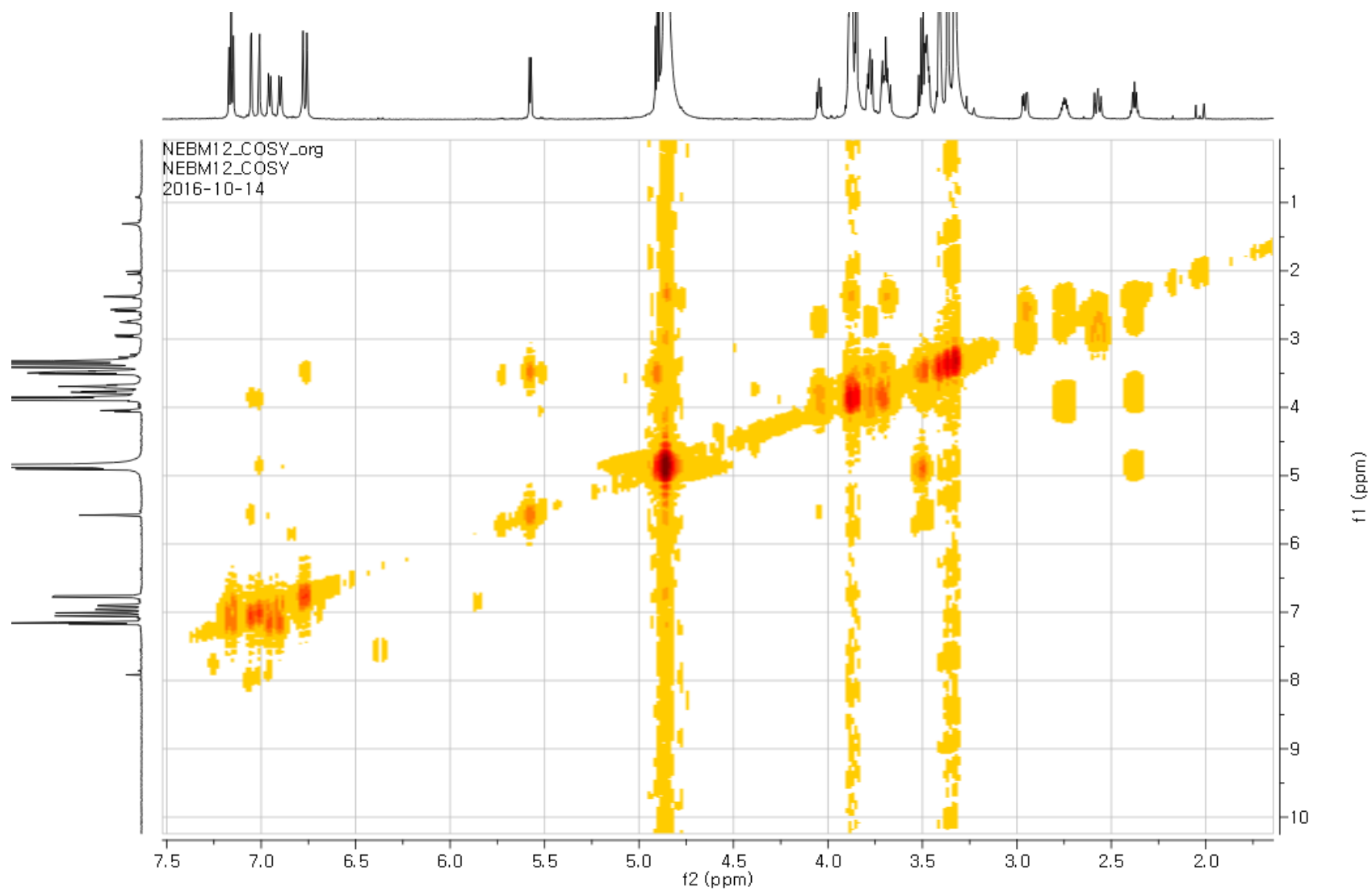


Fig. S5. NOESY spectrum of **1**

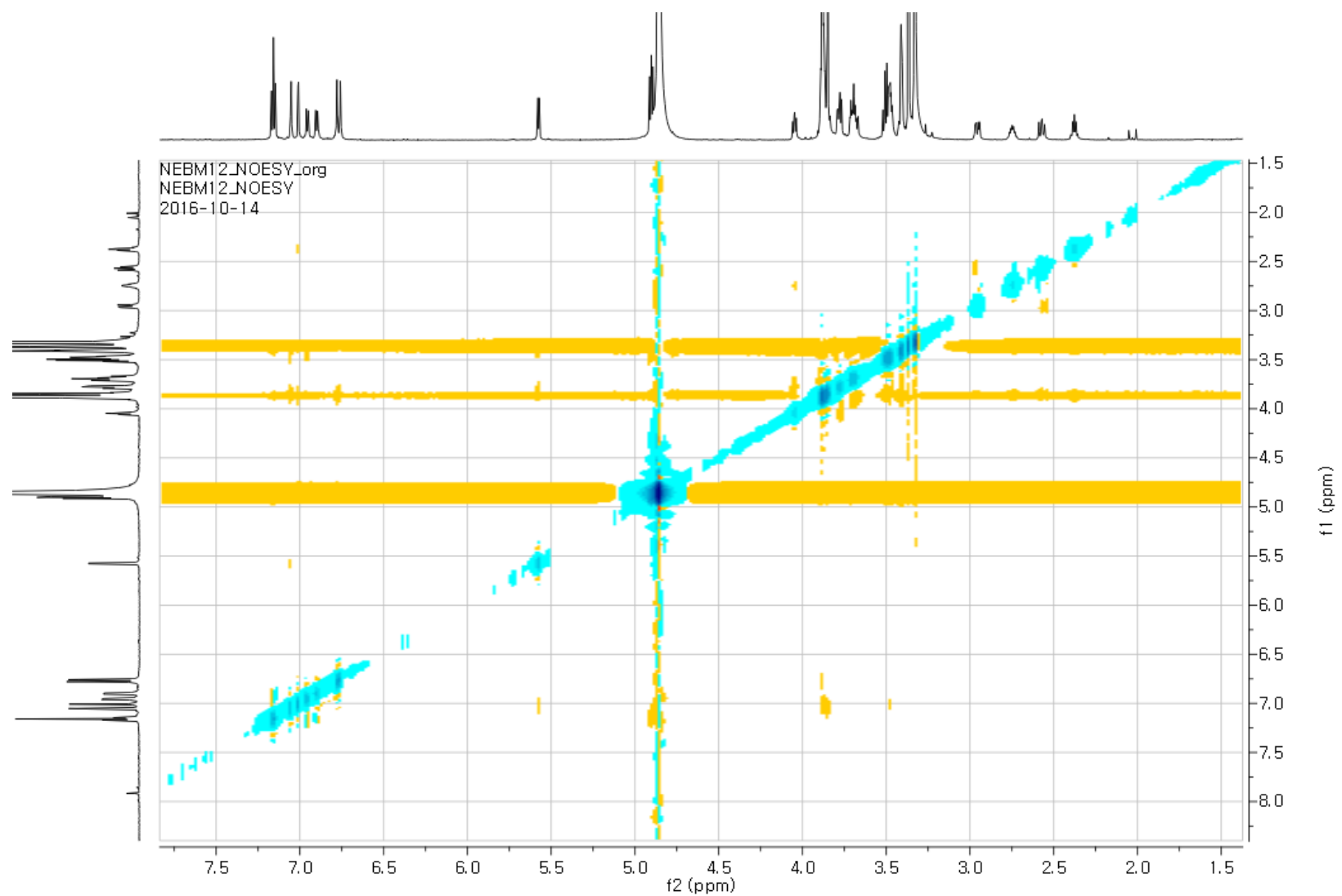


Fig. S6. ^1H - ^1H COSY spectrum of compound **1**

[Mass Spectrum]
Data : NEBM-12-C36H44O14 Date : 19-Oct-2016 17:12
Sample : -
Note : -
Inlet : Direct Ion Mode : FFB+
Spectrum Type : Normal Ion [EF-Linear]
RT : 0.98 min Scan# : (20,21)
BP : m/z 669.4211 Int. : 26.39
Output m/z range : 715.7478 to 730.9407 Cut Level : 0.00 %

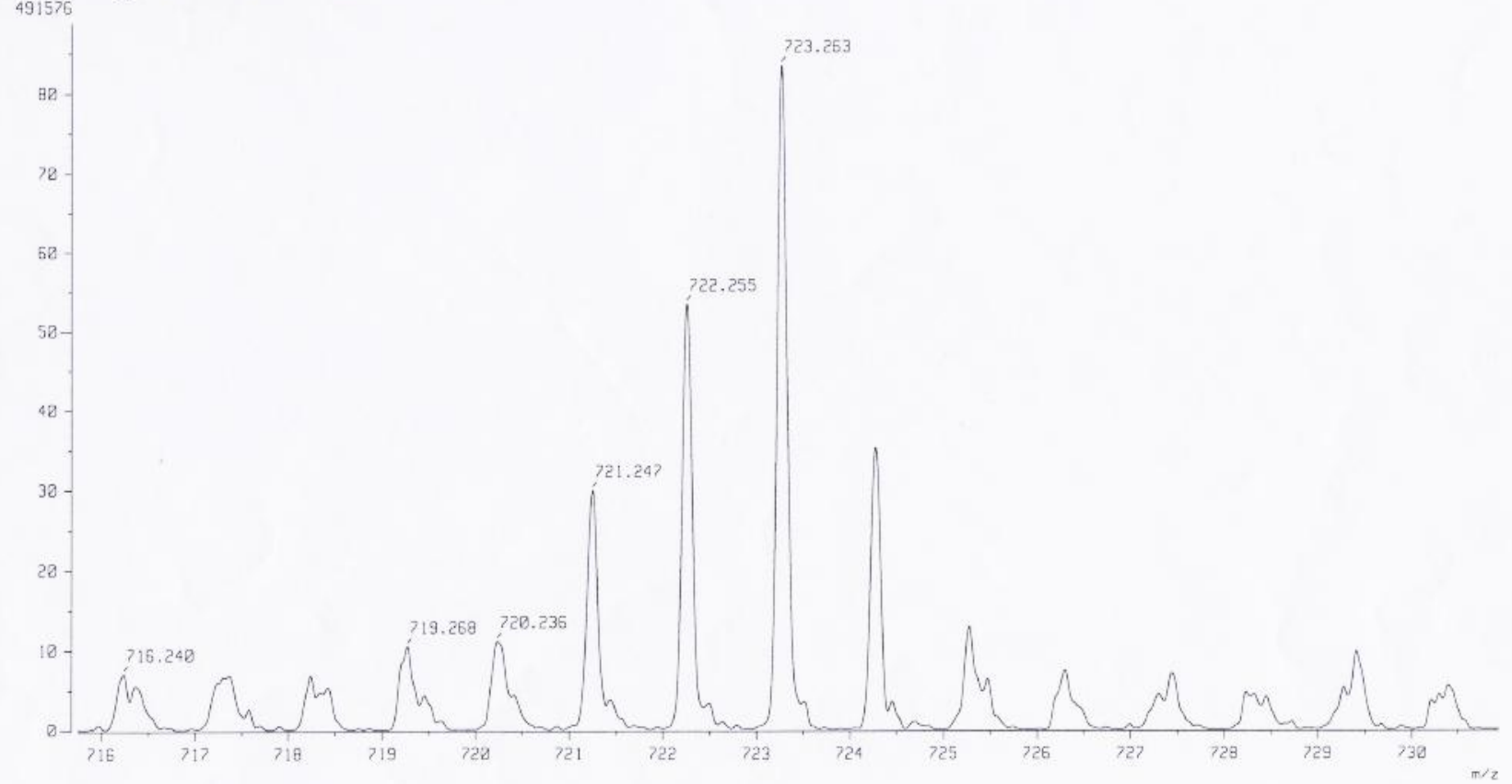


Fig. S7. HR-FAB-MS spectrum of **1**

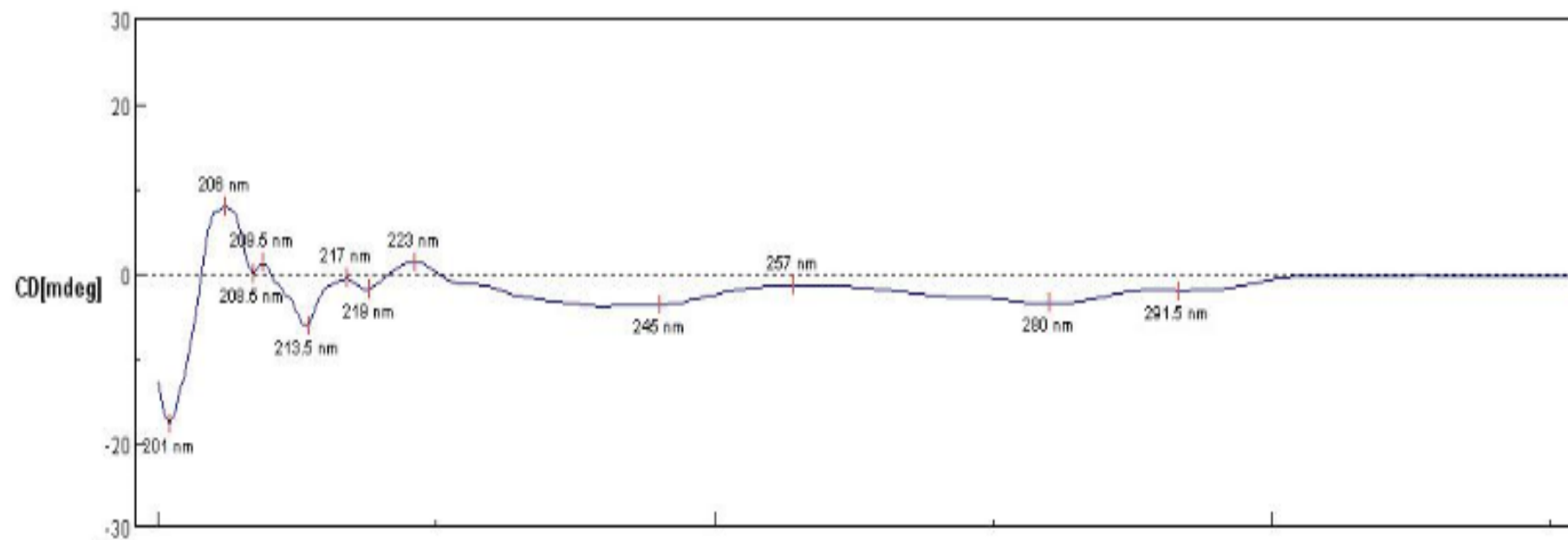


Fig. S8. CD spectra of compound **1**