

Supplementary Materials to:

Graphene-derivatized silica composite as solid phase extraction sorbent combined with GC-MS/MS for determination of polycyclic musks in aqueous samples

Cheng Li ^{1,2}, Jiayi Chen ^{1,2}, Yan Chen ^{1,2}, Jihua Wang ¹, Hua Ping ¹ and Anxiang Lu ^{1,2,*}

¹ Beijing Research Center for Agricultural Standards and Testing, Beijing Academy of Agriculture and Forestry Sciences, Beijing 100097, China; lic@brcast.org.cn (C.L.); chenjy@brcast.org.cn (J.C.); chenyc@brcast.org.cn (Y.C.); wangjihua@brcast.org.cn (J.W.); pingh@nercita.org.cn (H.P.)

² Beijing Municipal Key Laboratory of Agriculture Environment Monitoring, Beijing 100097, China

* Correspondence: anxiang_lu@hotmail.com; Tel.: +86-10-51503057

1. Supporting Tables

Table S1. Chemical information and MS/MS parameters of five PCMs and the internal standard.

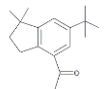
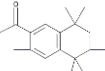
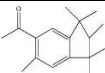
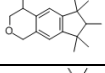
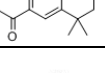
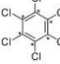
Compound Name	CAS Number	Molecular Formula	Molecular Weight	Molecular Structure	Retention time (min)	Transition 1	CE ^a 1 (eV)	Transition 2	CE 2 (eV)
ADBI	13171-00-1	C ₁₇ H ₂₄ O	244.4		7.49	244.0 → 229.2	10	229.0 → 173.1	5
AHMI	15323-35-0	C ₁₇ H ₂₄ O	244.4		7.84	244.0 → 229.2	10	229.0 → 187.2	30
ATII	68140-48-7	C ₁₈ H ₂₆ O	258.4		8.56	258.0 → 215.0	10	215.2 → 173.2	5
HHCB	1222-05-5	C ₁₈ H ₂₆ O	258.3		8.61	258.2 → 243.2	10	243.2 → 213.2	10
AHTN	21145-77-7	C ₁₈ H ₂₆ O	258.4		8.69	258.2 → 243.2	5	243.2 → 187.2	5
¹³ C ₆ -HCB (Internal standard)	93952-14-8	C ₆ Cl ₆	290.7		7.61	289.7 → 254.8	25	289.7 → 219.9	30

Figure S1

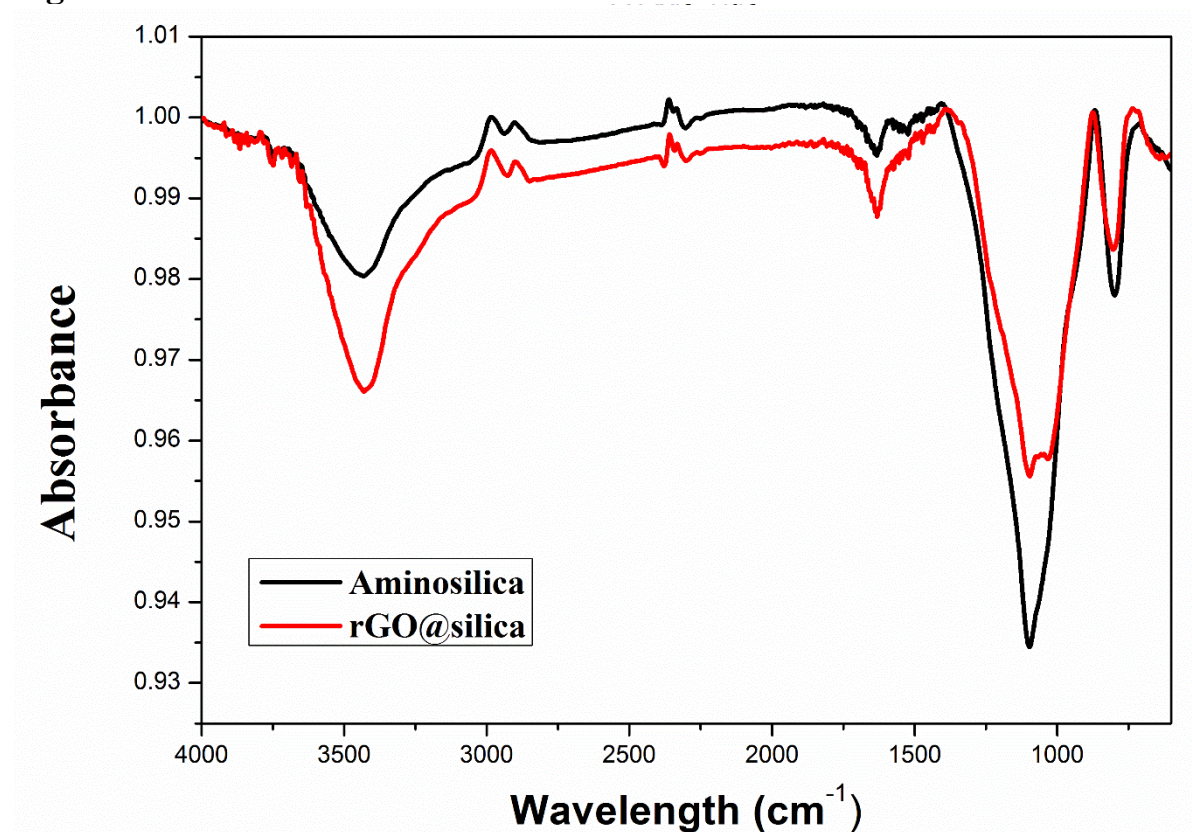


Fig. S1 FT-IR spectra of aminosilica and prepared rGO@silica.

Figure S2

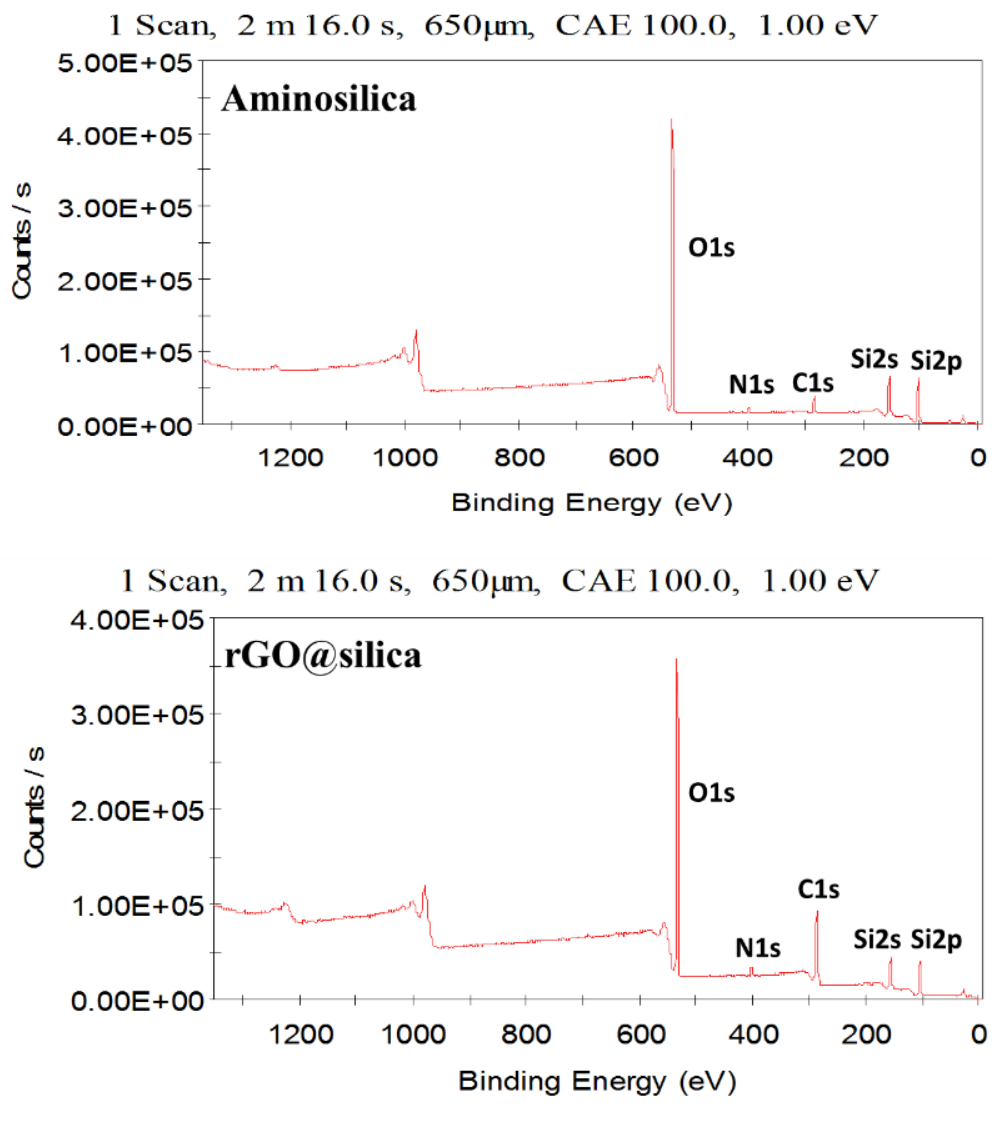


Fig. S2 The overview of XPS spectra for aminosilica and prepared rGO@silica

Figure S3

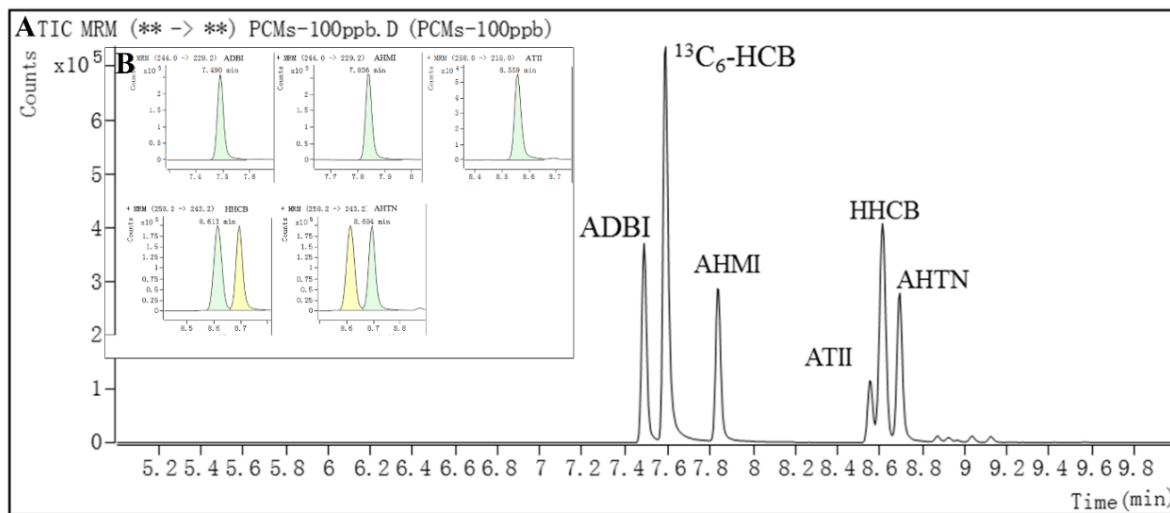


Figure S2. Typical chromatograms of tap water spiked with PCMs (100 ng/L): (A) TIC mode; (B) MRM mode.