

Table S1. NMR experiments measured for human FAT backbone resonance assignments.

Experiment Number	Experiment Type	Spectrometer (MHz)
1	1D ¹ H	600
2	1D ¹ H decoupled	600
3	1D [¹⁵ N, ¹ H] HSQC T1	600
4	1D [¹⁵ N, ¹ H] HSQC T2	600
5	2D [¹⁵ N, ¹ H] HSQC & TROSY	600 & 750
6	2D [¹³ C, ¹ H] <i>ct</i> HSQC (aliphatic)	600 & 750
7	2D [¹³ C, ¹ H] <i>ct</i> HSQC (aromatic)	600 & 750
8	3D HNCO	600
9	3D HN(CA)CO	600
10	3D HNCACB	600
11	3D CBCACONH	600
12	3D HBHACONH	600
13	3D [¹ H]-NOESY-[NH/CH]	600

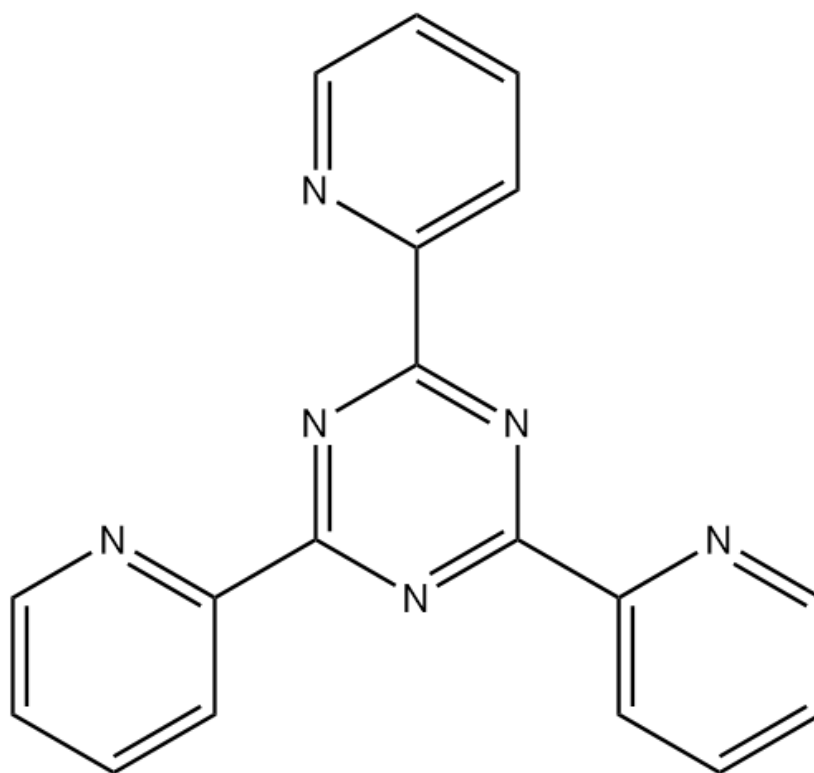


Figure S1. Structure of control compound for SPR screening (2,4,6-tri(pyridin-2-yl)-1,3,5-triazine).