

Figure S1

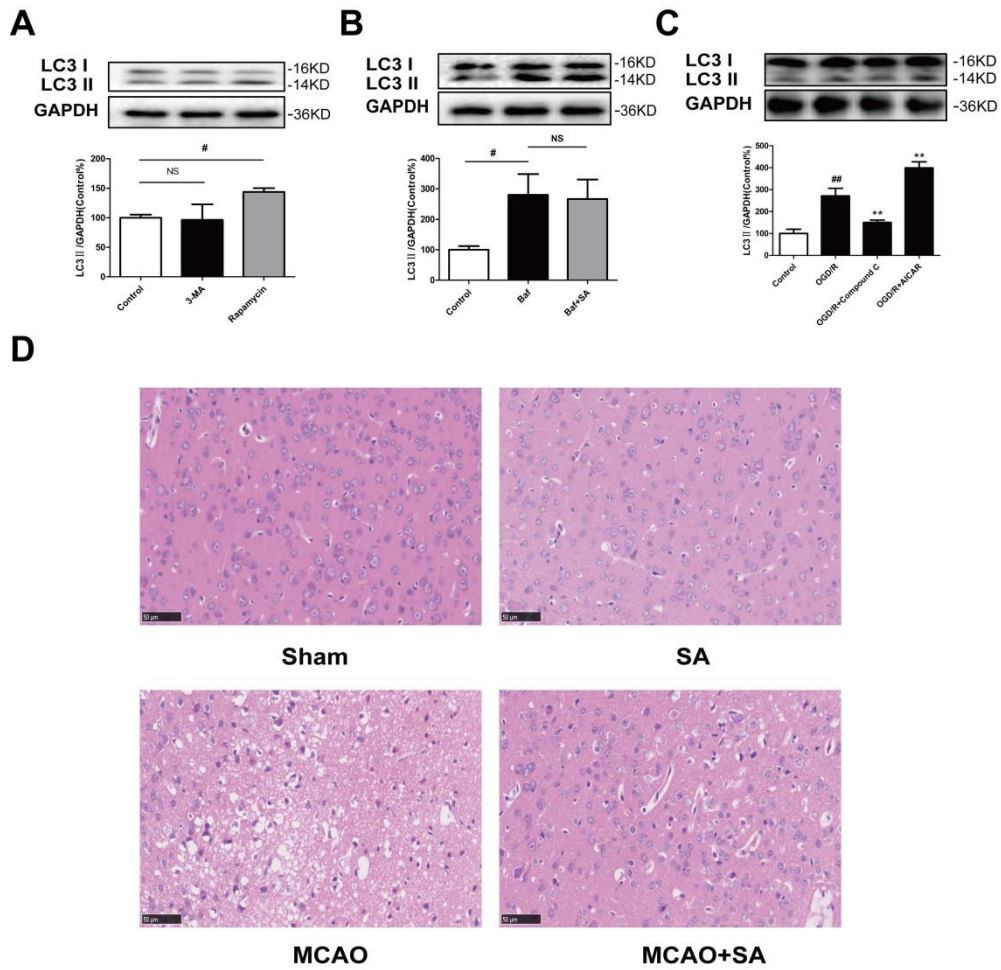


Figure S1. LC3 expression in PC12 cells. (A) PC12 cells were treated with rapamycin or 3-MA and then exposed to OGD/R; (B) PC12 cells were treated with baf or SA and then exposed to OGD/R; (C) PC12 cells were treated with compound C or AICAR and then exposed to OGD/R; Then the expressiona of LC3 were detected by western blot (n=3). (D) HE staining showing the morphological characteristics of mouse brains upon MCAO/R. Bar: 50 μ m. All data are mean \pm SD. $^{##}P < 0.01$ vs. control group; $^{*}P < 0.05$ and $^{**}P < 0.01$ vs. OGD/R group.