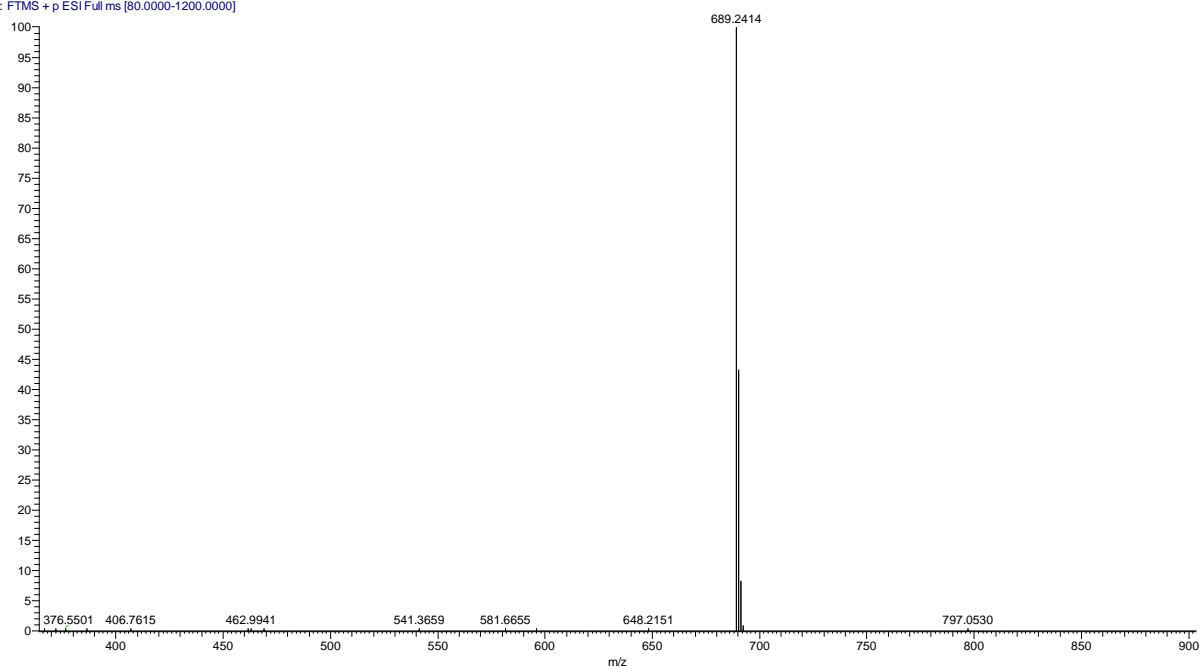


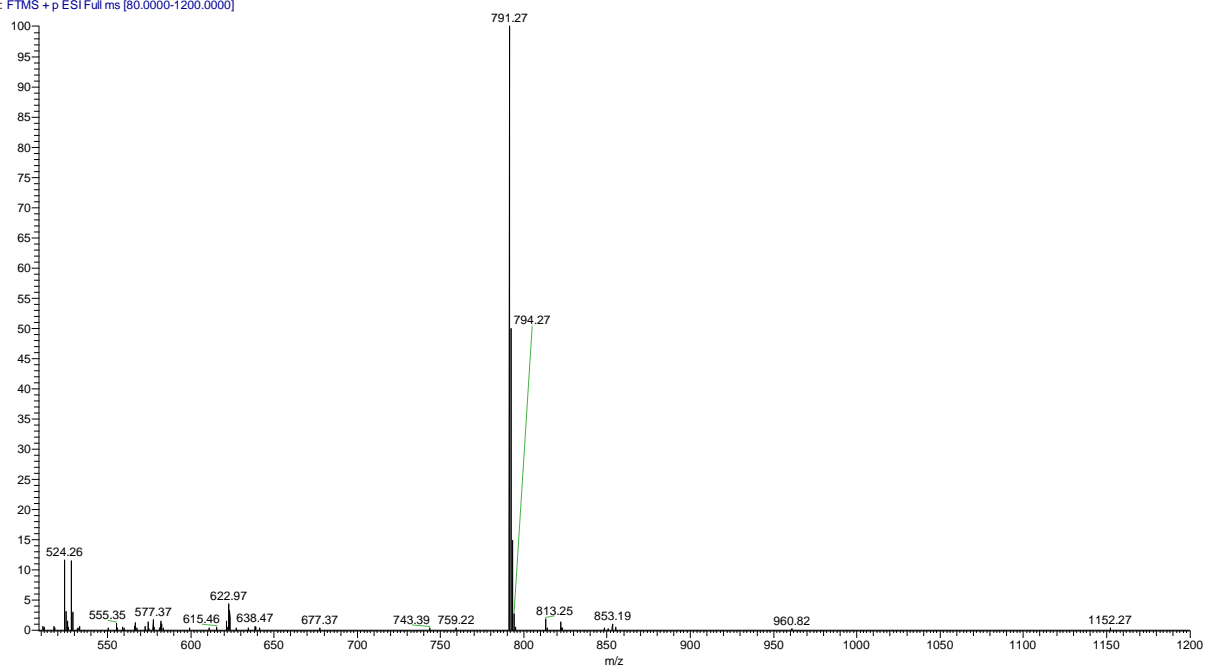
A. AF-ENR

AF-ENR_191115210545 #623 RT: 5.96 AV: 1 NL: 2.21E8
T: FTMS + p ESI Full ms [80.0000-1200.0000]



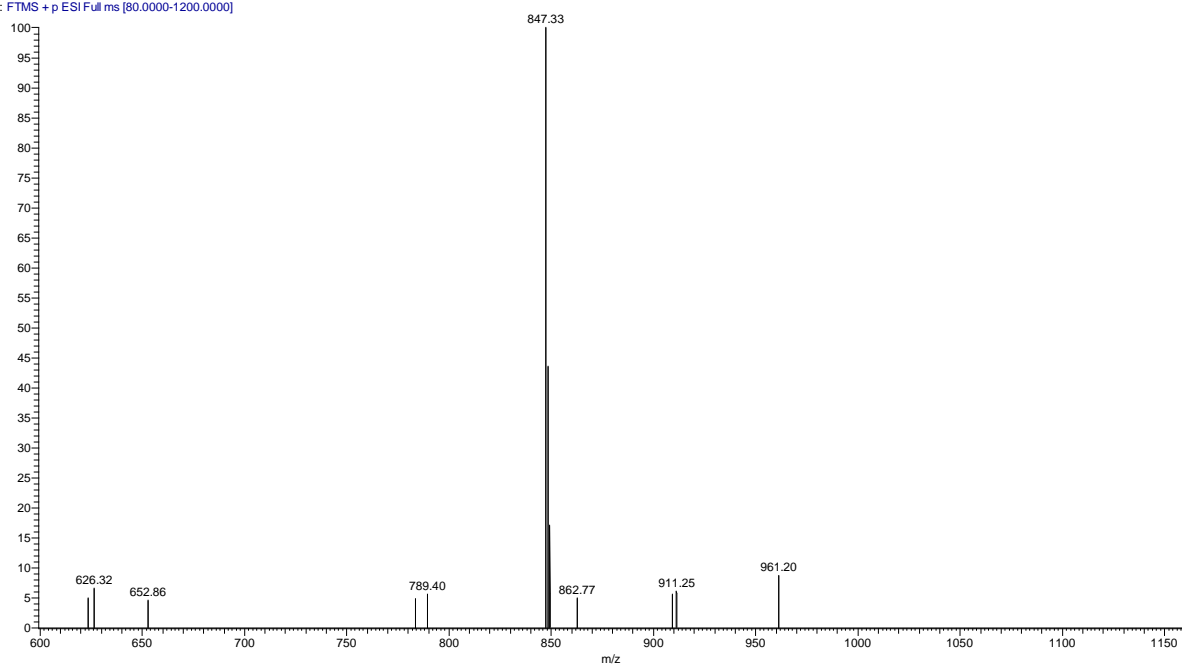
B. EDF-ENR

EDF #281 RT: 2.72 AV: 1 NL: 3.41E7
T: FTMS + p ESI Full ms [80.0000-1200.0000]



C. HDF-ENR

HDF1_191117122420_#711 RT: 6.79 AV: 1 NL: 5.93E6
T: FTMS + p ESI Full ms [80.0000-1200.0000]



S1. Positive-ion mass spectrum (MS) of three tracers. A. AF-ENR; B. EDF-ENR; C. HDF-ENR.