

Supporting Materials

Scalable Exfoliation of Bulk MoS₂ to Single- and Few-Layers Using Toroidal Taylor Vortices

Vishakha Kaushik^{1,†}, Shunhe Wu^{1,†}, Hoyoung Jang¹, Je Kang¹, Kyunghoon Kim^{1,} and Ji Won
Suk^{1,2,*}*

¹ School of Mechanical Engineering, Sungkyunkwan University, Suwon, Gyeonggi-do 16419, Republic
of Korea

² SKKU Advanced Institute of Nanotechnology, Sungkyunkwan University, Suwon, Gyeonggi-do 16419,
Republic of Korea

[†]These authors contributed equally to this work.

*Corresponding authors: kenkim@skku.edu (K. Kim) and jwsuk@skku.edu (J. W. Suk)

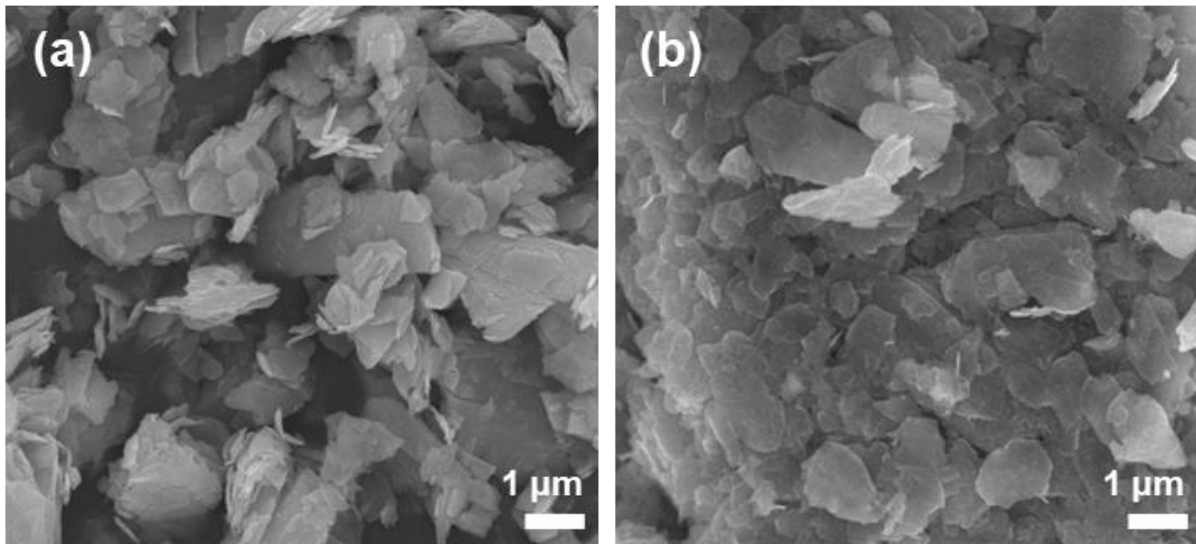


Figure S1. SEM images of (a) raw and (b) grinded MoS₂ powders.

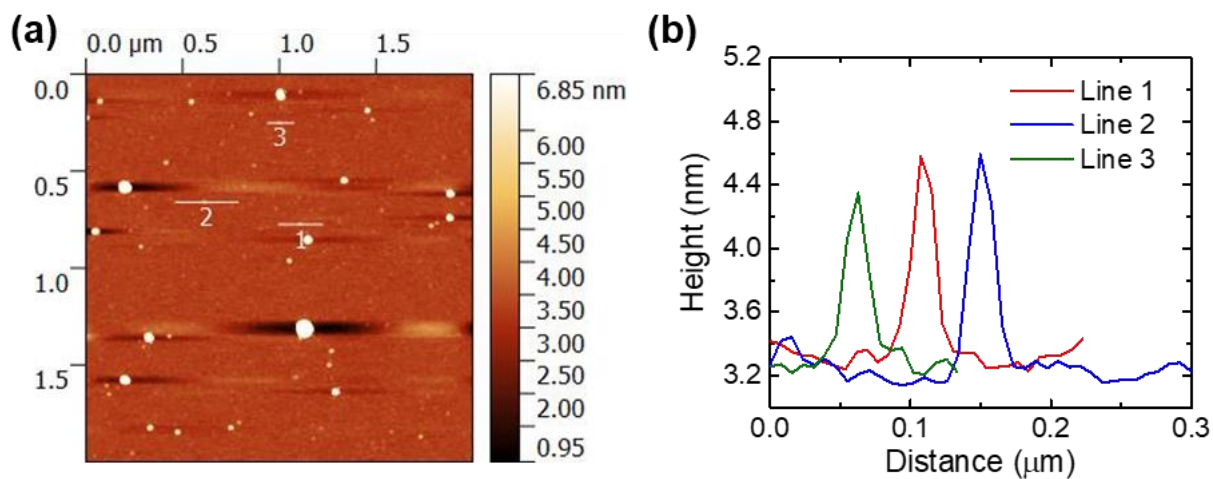


Figure S2. AFM analysis of the exfoliated MoS₂ nanosheets in a scan area of 2 μm × 2 μm. (a)

Topological image. (b) Line profiles obtained from (a).