

Figure S1. SEM images of mesoporous Pt samples prepared with molar ratios of $\text{PtCl}_6^{2-}/\text{P2VP}$: (a) 1.5:1 and (b) 5:1.

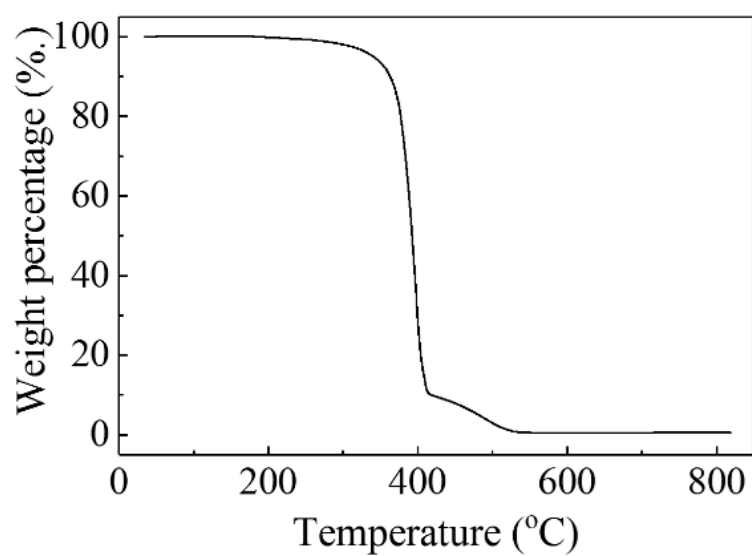


Figure S2. TG data of polymeric micelle of $\text{PS}_{192}\text{-}b\text{-P2VP}_{143}\text{-}b\text{-PEO}_{613}$.

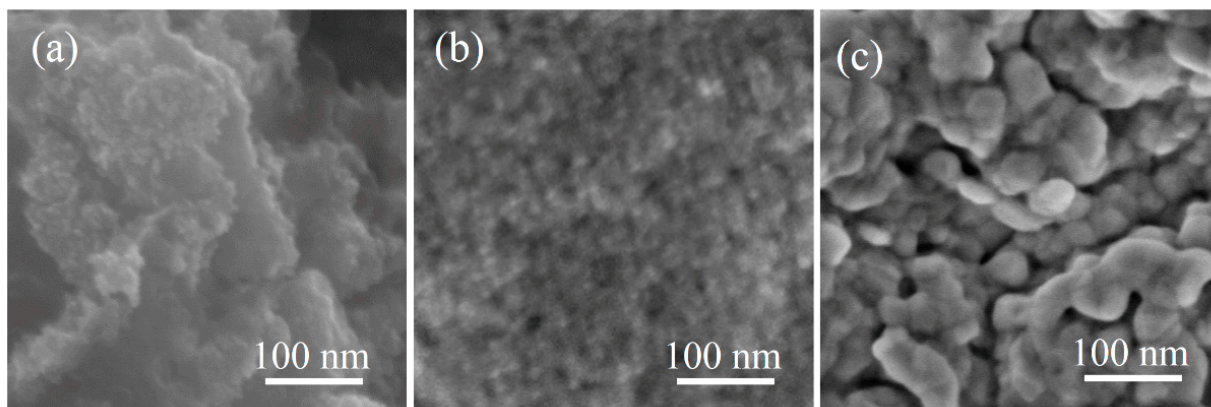


Figure S3. SEM images of mesoporous Pt samples (a) Pt-0, (b) Pt-250 and (c) Pt-450.

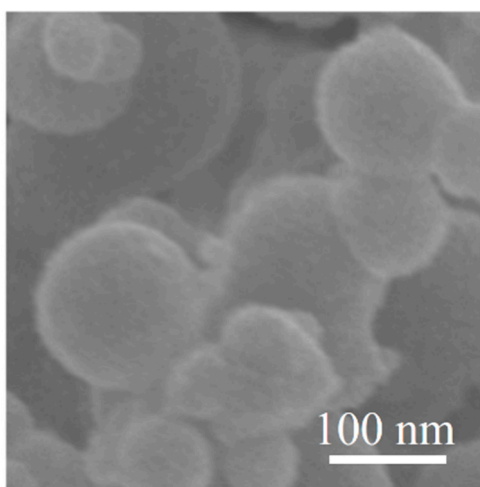


Figure S4. SEM image of commercially available Pt black.

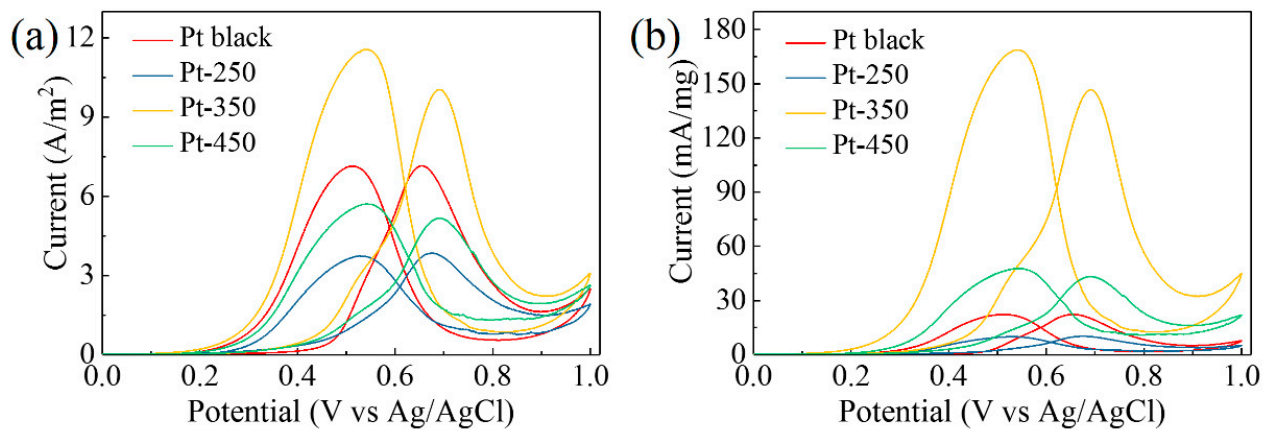


Figure S5. (a, b) Cyclic voltammograms detected in 0.5 M H₂SO₄ containing 0.5 M CH₃OH solution with the potential between 0 and 1 V at a scan rate of 50 mV·s⁻¹. The currents of panel (a) were normalized by the Pt mass and the currents of panel (b) were normalized by the ECSA values obtained from the CV curves recorded in 0.5 M H₂SO₄ solution.