

Electrospun filaments embedding bioactive glass particles with ion release and enhanced mineralization

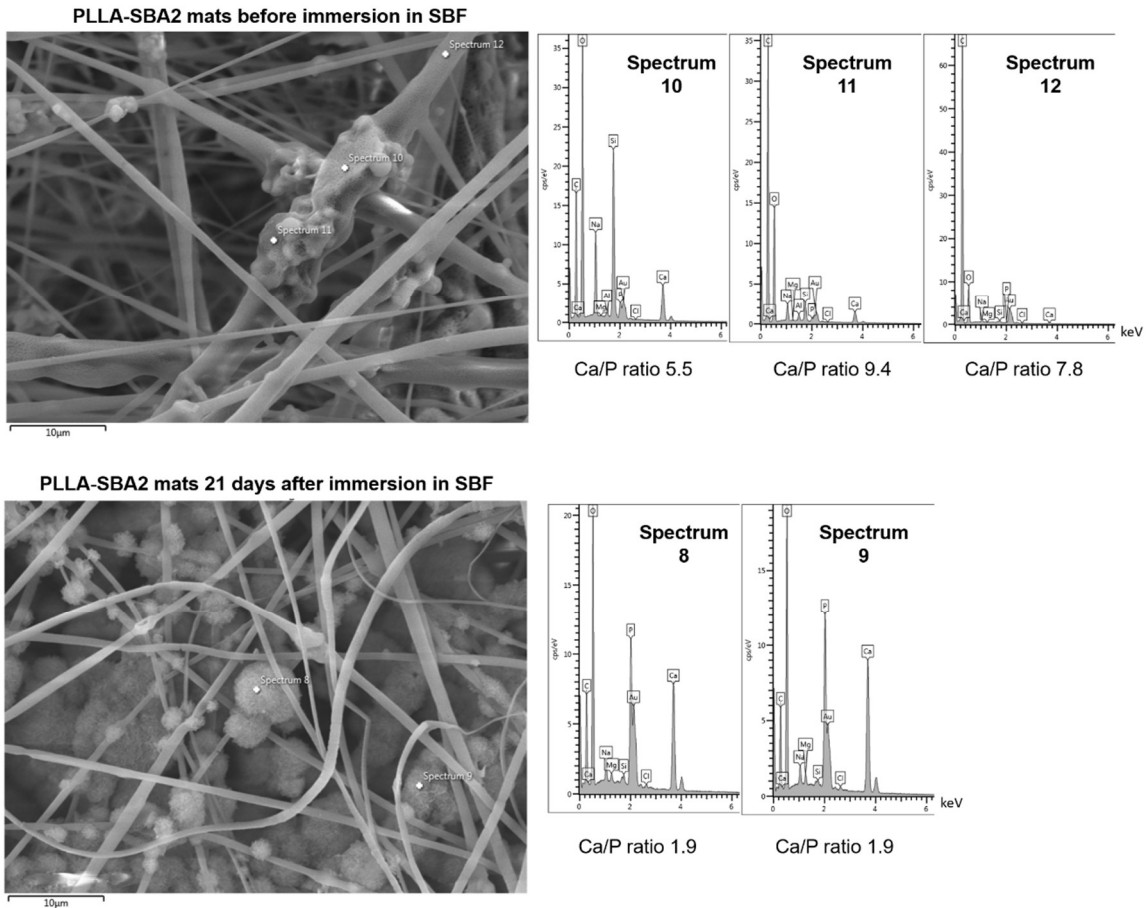


Figure S1. EDS analysis performed on PLLA-SBA2 sample before (top) and after 21 days of immersion in SBF solution (bottom).

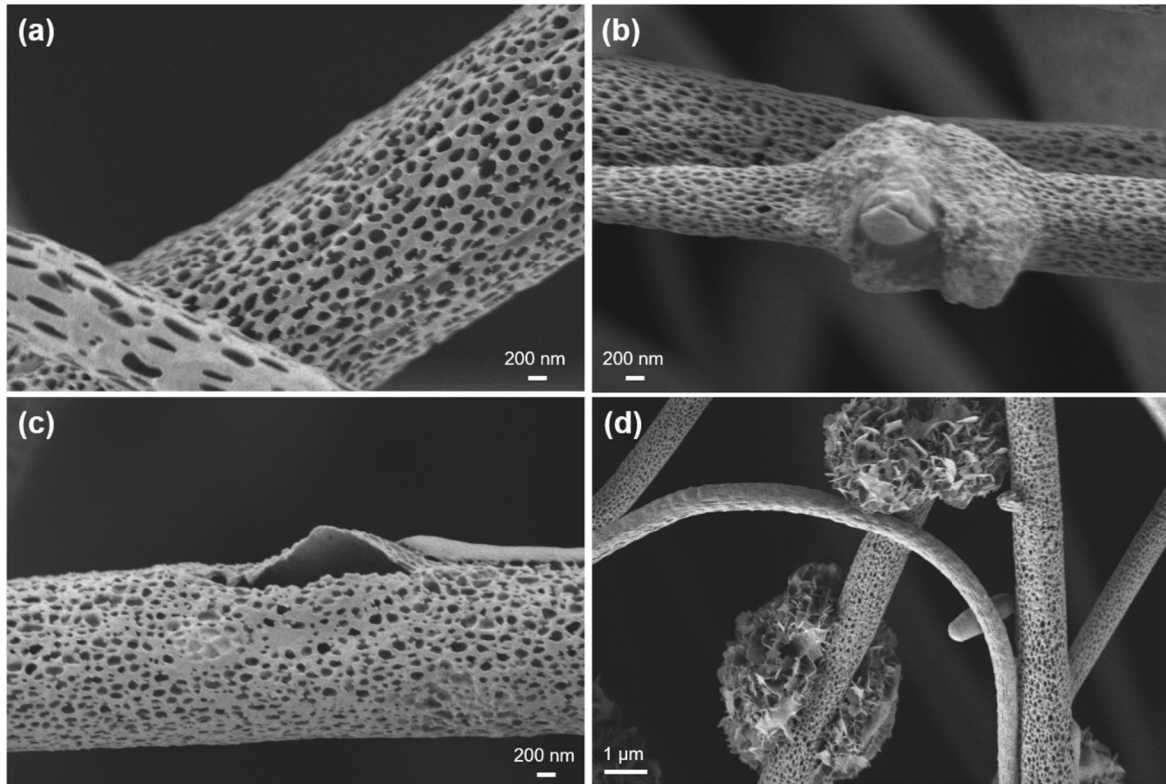


Figure S2. SEM micrographs of neat PLLA fibers (a), composite PLLA-SBA2 fibers (b), composite fibers after 7 days in PBS (c) and 21 days in SBF (d).