

## Supplementary Information

# Spiderweb-Like Fe-Co Prussian Blue Analogue Nanofibers as Efficient Catalyst for Bisphenol-A Degradation by Activating Peroxymonosulfate

Hongyu Wang<sup>1,2</sup>, Chaohai Wang<sup>1,2</sup>, Junwen Qi<sup>1,2,\*</sup>, Yubo Yan<sup>3</sup>, Ming Zhang<sup>1,2</sup>, Xin Yan<sup>1,2</sup>, Xiuyun Sun<sup>1,2</sup>, Lianjun Wang<sup>1,2</sup> and Jiansheng Li<sup>1,2,\*</sup>

- <sup>1</sup> Key Laboratory of New Membrane Materials, Ministry of Industry and Information Technology, Nanjing University of Science & Technology, Nanjing 210094, China; wanghy4113@163.com (H.W.); wch2016@njjust.edu.cn (C.W.); mzhang925@njjust.edu.cn (M.Z.); 18205150297@163.com (X.Y.); sunxyun@njjust.edu.cn (X.S.); wanglj@njjust.edu.cn (L.W.)
  - <sup>2</sup> Jiangsu Key Laboratory of Chemical Pollution Control and Resources Reuse, School of Environmental and Biological Engineering, Nanjing University of Science & Technology, Nanjing 210094, China
  - <sup>3</sup> Jiangsu Engineering Laboratory for Environment Functional Materials, Huaiyin Normal University, Huaian 223300, China; yubo.yan@outlook.com
- \* Correspondence: qijunwen@njjust.edu.cn (J.Q.); lijsh@njjust.edu.cn (J.L.); Tel.: (+86)-025-8431-5351 (J.L.)

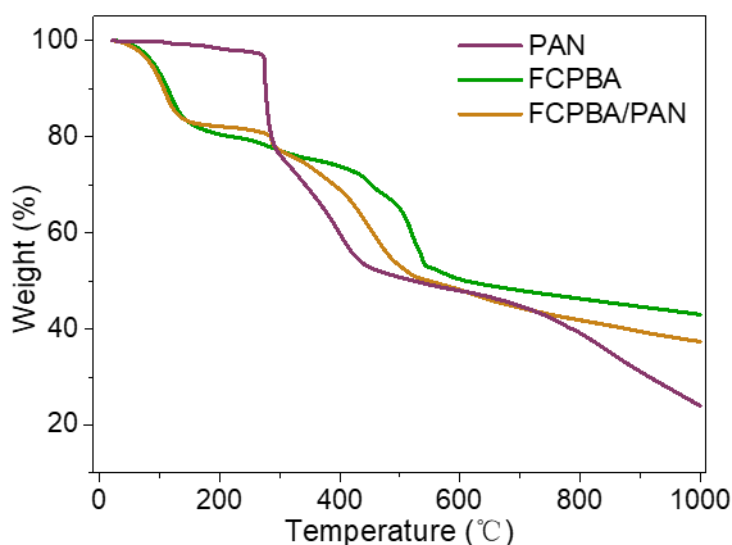


Figure S1. (Thermogravimetric analysis) TG curves of PAN, FCPBA, FCPBA/PAN.

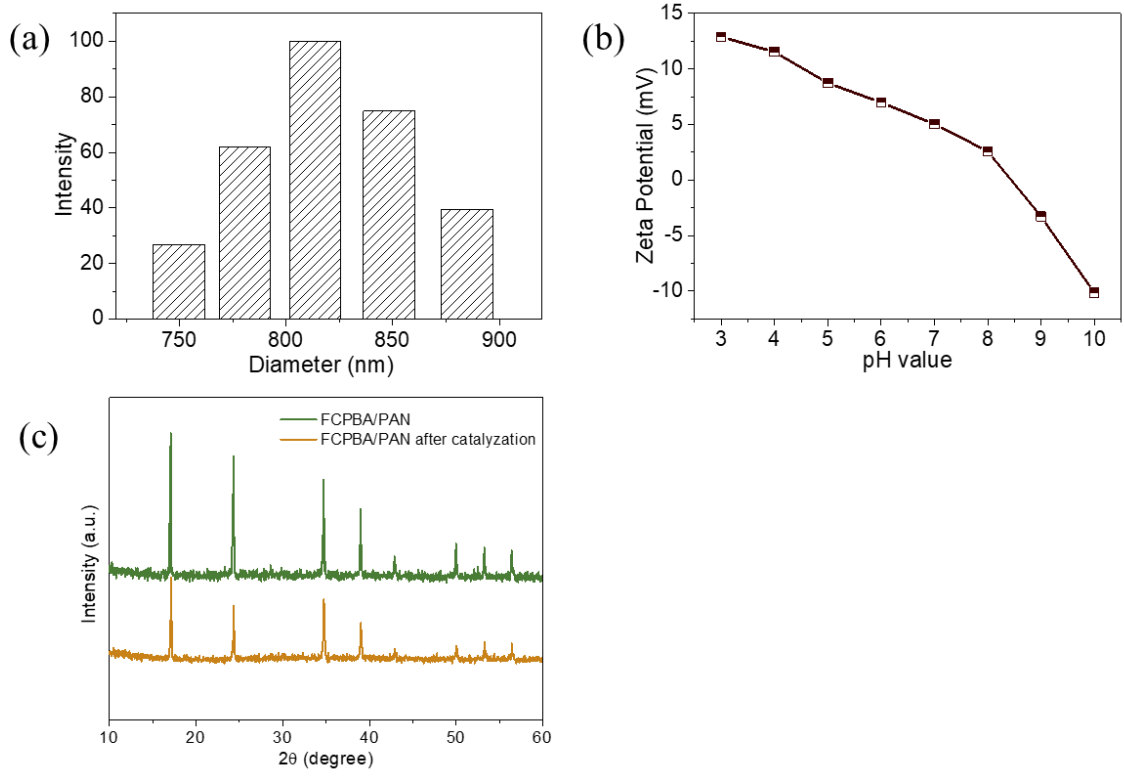


Figure S2. (a) Particle size; (b) zeta potential and (c) stability of FCPBA.

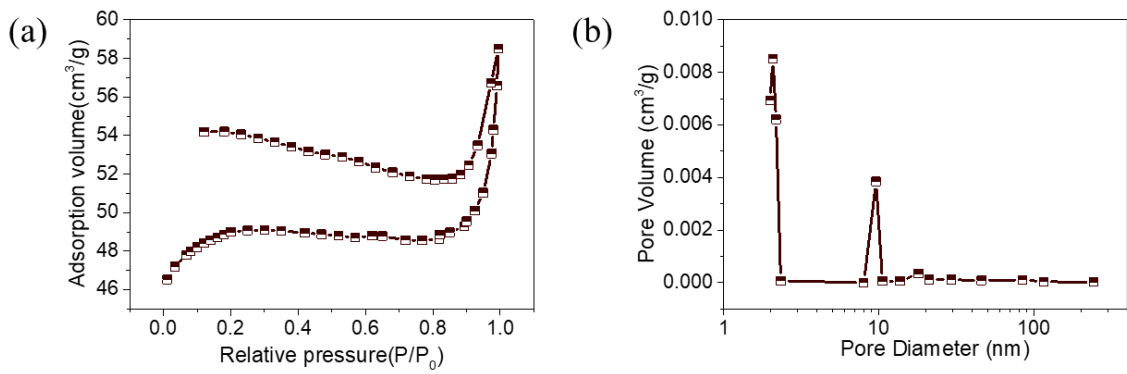


Figure S3. (a) N<sub>2</sub> sorption isotherms and (b) pore size distribution of FCPNA/PAN nanofibers.

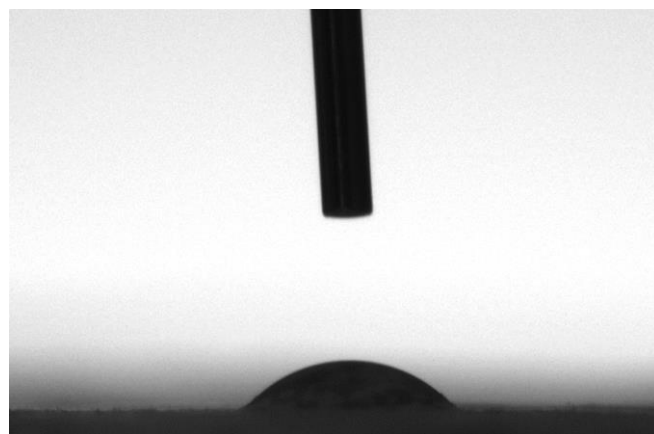
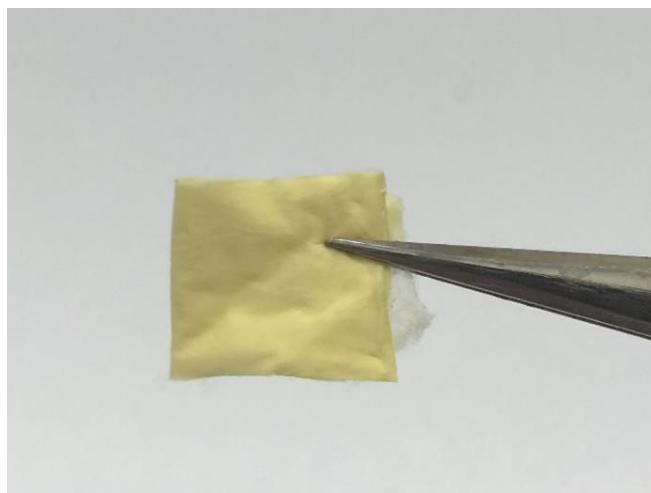
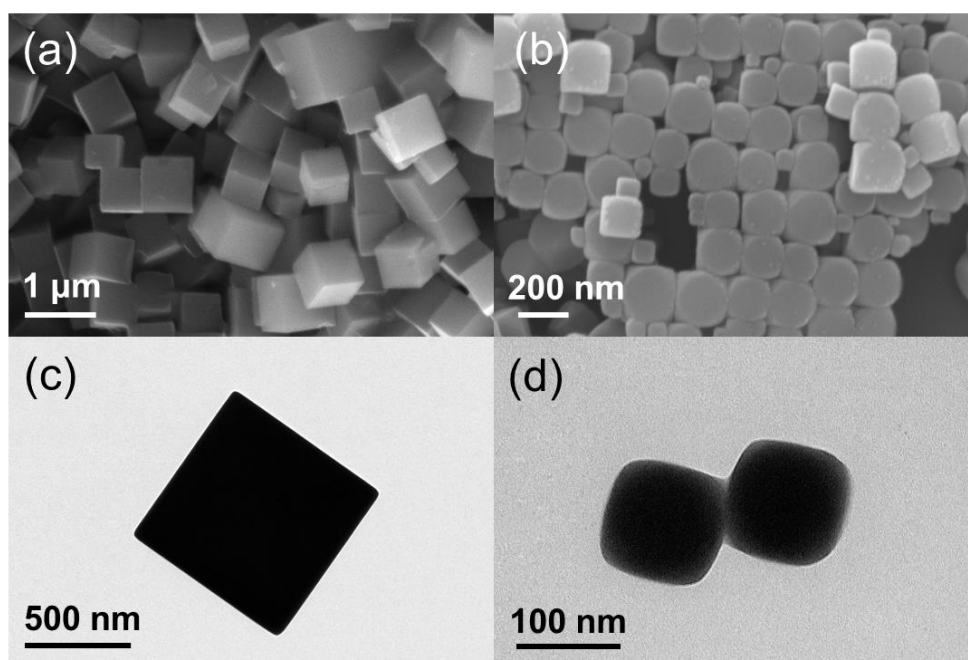


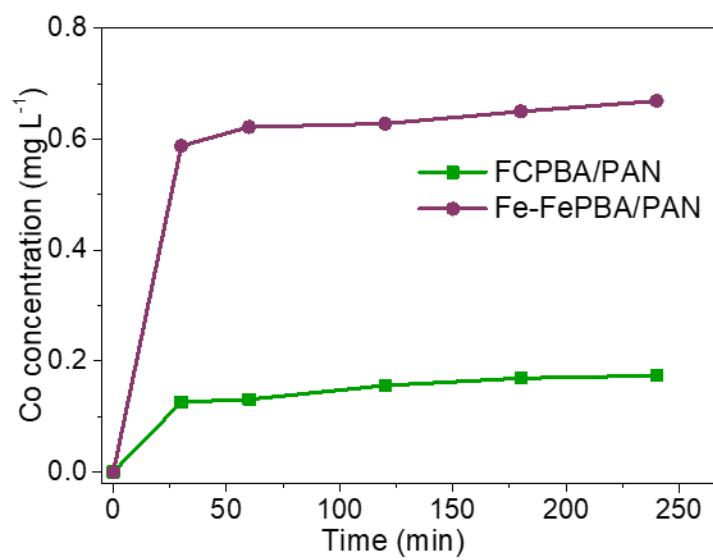
Figure S4. Water contact angle of FCPBA/PAN nanofibers.



**Figure S5.** Mechanical properties of FCPBA/PAN nanofibers.



**Figure S6.** SEM images of (a) Fe-Fe PBA and (b) Co-Co PBA; TEM imagers of (c) Fe-Fe PBA and (d) Co-Co PBA.



**Figure S7.** Cobalt leaching of FCPBA/PAN and Fe-FePBA/PAN in reaction system.