

Supplementary Materials

Ecotoxicity Assessment of Graphene Oxide by *Daphnia magna* through a Multimarker Approach from the Molecular to the Physiological Level including Behavioral Changes

Ildikó Fekete-Kertész ¹, Krisztina László ², Csilla Terebesi ¹, Benjámín Sándor Gyarmati ³, Shereen Farah ², Rita Márton ¹ and Mónika Molnár ^{1*}

¹ Budapest University of Technology and Economics, Faculty of Chemical Technology and Biotechnology, Department of Applied Biotechnology and Food Science, Environmental Microbiology and Biotechnology Group, Műegyetem rkp. 3., Budapest, 1111 Hungary; fekete.kertesz.ildiko@mail.bme.hu (I.F.K.); terebesics@gmail.com (Cs.T.); ritamarton34@gmail.com (R.M.).

² Budapest University of Technology and Economics, Faculty of Chemical Technology and Biotechnology, Department of Physical Chemistry and Materials Science, Surface Chemistry Group, Műegyetem rkp. 3., Budapest, 1111 Hungary; klaszlo@mail.bme.hu (K.L.); shereen.farah@mail.bme.hu (S.F.)

³ Budapest University of Technology and Economics, Faculty of Chemical Technology and Biotechnology, Department of Physical Chemistry and Materials Science, Soft Matters Group, Műegyetem rkp. 3., Budapest, 1111 Hungary; bgyarmati@mail.bme.hu

* Correspondence: mmolnar@mail.bme.hu; Tel.: +36(1)/463-2347

Table S1. Electric conductivity and pH values measured in the assembled test systems after 24 and 48 h of exposure reported from n = 3 determinations per sample. Significant differences when compared to the control are marked by bold italics at each time point

		Graphene oxide concentration [mg/L]								
		Control			3.125			6.25		
		0 h	24 h	48 h	0 h	24 h	48 h	0 h	24 h	48 h
pH		7.99±0.0	8.05±0.0	8.09±0.0	8.17±0.0	8.20±0.0	8.21±0.0	8.14±0.0	8.16±0.0	8.18±0.0
		3	3	2	3	2	4	1	3	1
EC [μS/cm]		583±8	586±11	588±8	476±15	477±6	482±16	480±6	482±8	490±7
		12.5			25			50		
		0 h	24 h	48 h	0 h	24 h	48 h	0 h	24 h	48 h
pH		8.00±0.0	8.02±0.0	8.01±0.0	7.80±0.0	7.81±0.0	7.89±0.0	7.75±0.0	7.80±0.0	7.88±0.0
		1	3		3	5	7	1	2	4
EC [μS/cm]		490±13	493±8	492±11	486±7	490±10	491±6	485±6	485±5	487±11

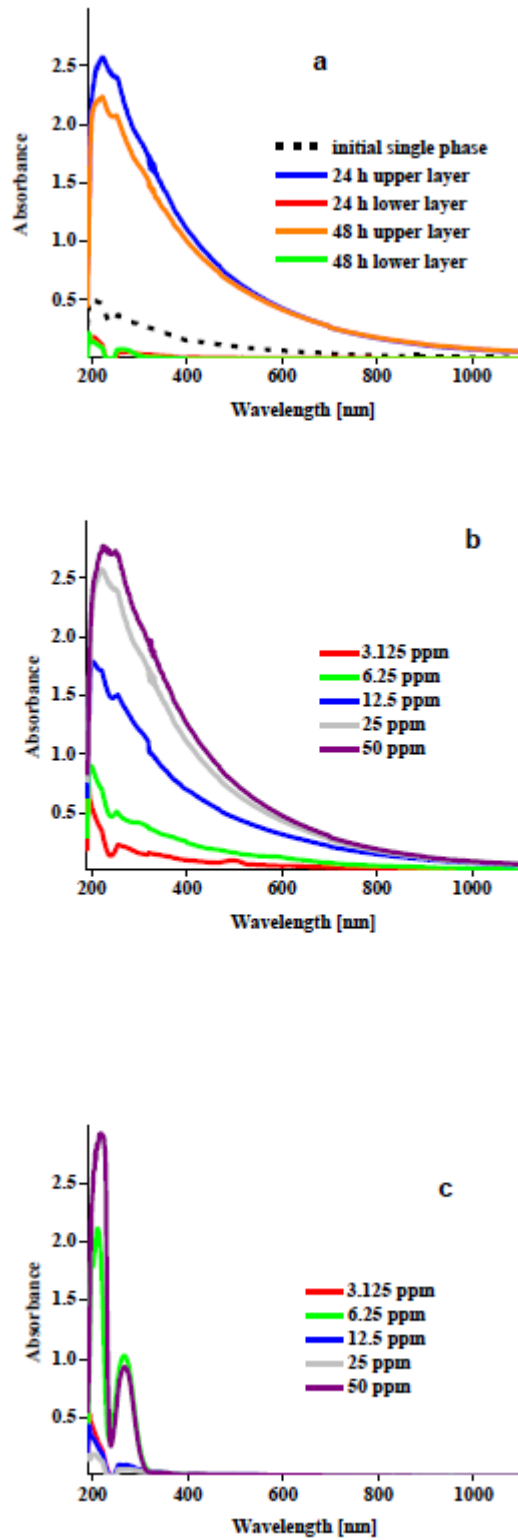


Figure S1. The fate of the GO particles in the test medium followed by UV-Vis spectrometry (a) in the sample with 25 ppm initial GO concentration; (b) in the lower (GO rich) layers of the samples with different initial GO concentration; (c) in the GO depleted (upper) layers of the samples with different initial GO concentration.

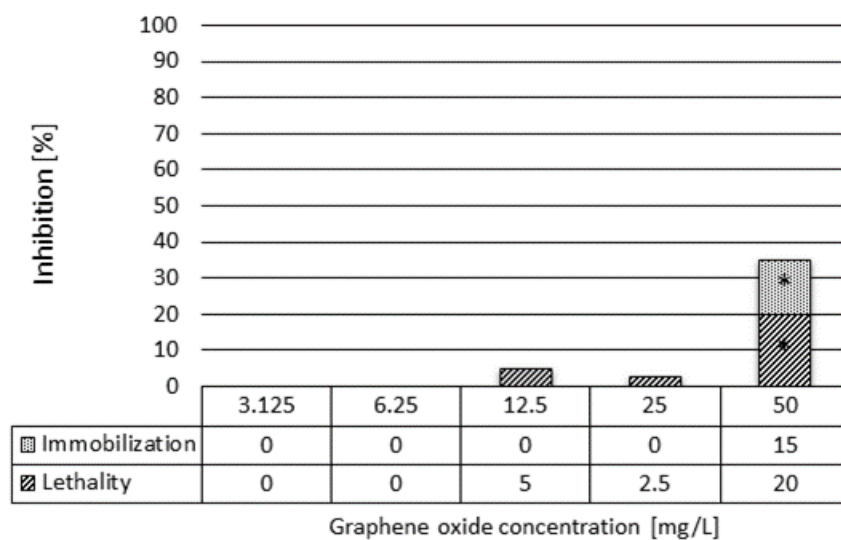


Figure S2. The effect of graphene oxide on the survival and swimming ability of *D. magna* after 48 h of exposure. Standard deviation values were less than 10% in all cases. Significant effect compared to control is marked by asterisk (*).