

Article

Bee collected pollen with enhanced health benefits, produced by fermentation with a Kombucha consortium

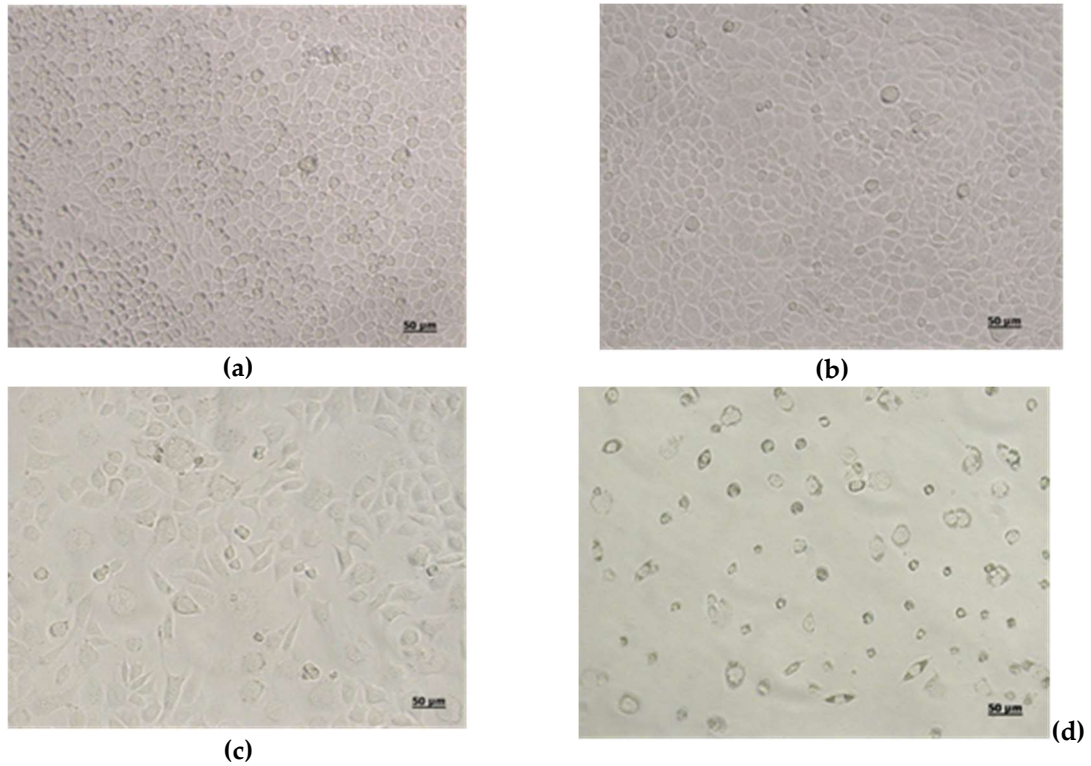


Figure S1: Light micrographs of NCTC clone L929 cells untreated (a) and treated with different concentrations of atomized product: 20 mg/ml (b), 25 mg/ml (c) and 30 mg/ml (d).

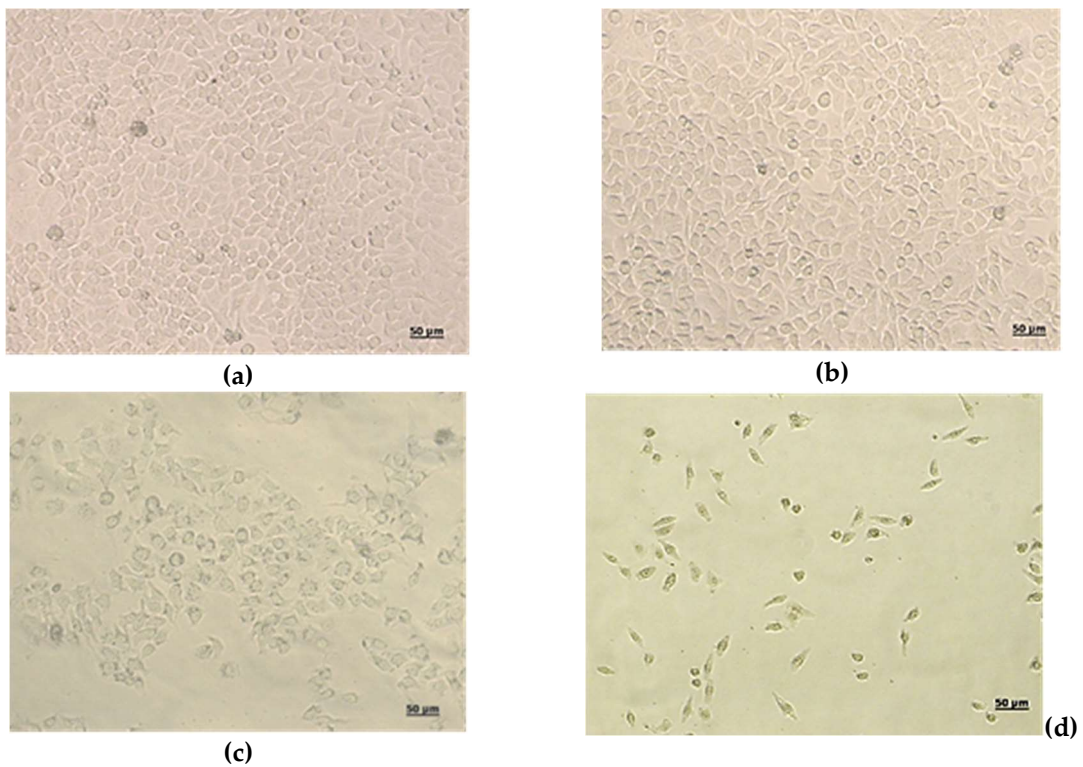
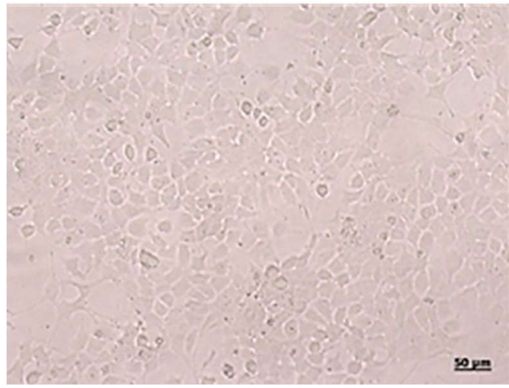
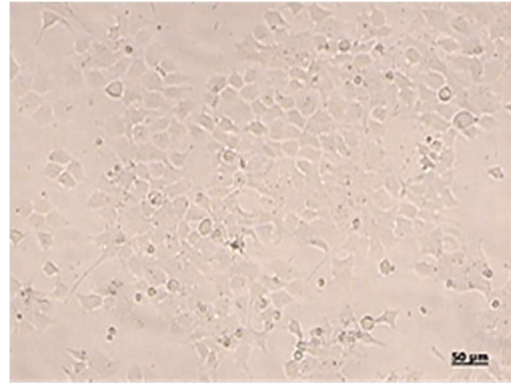


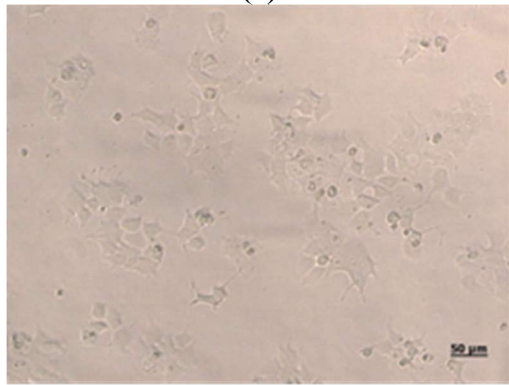
Figure S2. Light micrographs of Hep-2 cells untreated (a) and treated with different concentrations of atomized product: 15 mg/ml (b), 20 mg/ml (c) and 30 mg/ml (d).



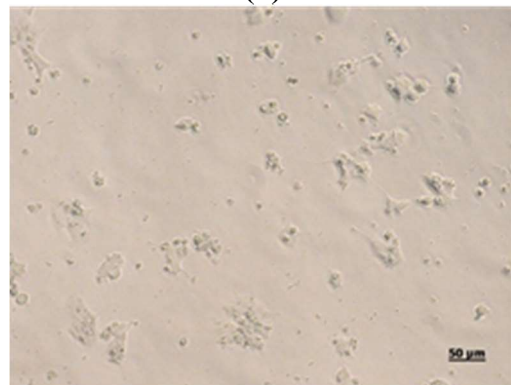
(a)



(b)



(c)



(d)

Figure S3. Light micrographs of Caco-2 cells untreated (a) and treated with different concentrations of atomized product: 10 mg/ml (b), 15 mg/ml (c) and 20 mg/ml (d).