

## SUPPLEMENTARY MATERIALS

### **Systematic review with meta-analysis: *Lactobacillus reuteri* DSM 17938 for treating acute gastroenteritis in children. An update**

Bernadeta Patro-Gołąb<sup>1</sup>, Hania Szajewska<sup>1</sup>.

<sup>1</sup>Department of Paediatrics, The Medical University of Warsaw

#### **Corresponding author:**

Hania Szajewska, MD

The Medical University of Warsaw

Department of Paediatrics

02-091 Warsaw, Żwirki i Wigury 63A

Table S1. Example of search strategy for EMBASE.

---

((('lactobacillus' OR 'lactobacillus'/exp OR lactobacillus) AND reuteri OR l.) AND reuteri OR dsm) AND 17938 OR 'probiotic' OR 'probiotic'/exp OR probiotic OR 'probiotics' OR 'probiotics'/exp OR probiotics) AND ('pediatric' OR 'pediatric'/exp OR pediatric OR 'paediatric' OR 'paediatric'/exp OR paediatric OR 'child' OR 'child'/exp OR child OR 'children' OR 'children'/exp OR children OR 'infants' OR 'infants'/exp OR infants OR 'toddlers' OR 'toddlers'/exp OR toddlers OR 'adolescents' OR 'adolescents'/exp OR adolescents OR newborns) AND ('diarrhea' OR 'diarrhea'/exp OR diarrhea OR 'diarrhoea' OR 'diarrhoea'/exp OR diarrhoea OR diarrh\* OR 'gastroenteritis' OR 'gastroenteritis'/exp OR gastroenteritis) AND [2016-2019]/py AND [embase]/lim

---

Figure S1. The identification process for eligible trials (since January 2016, i.e., the date of the last search).

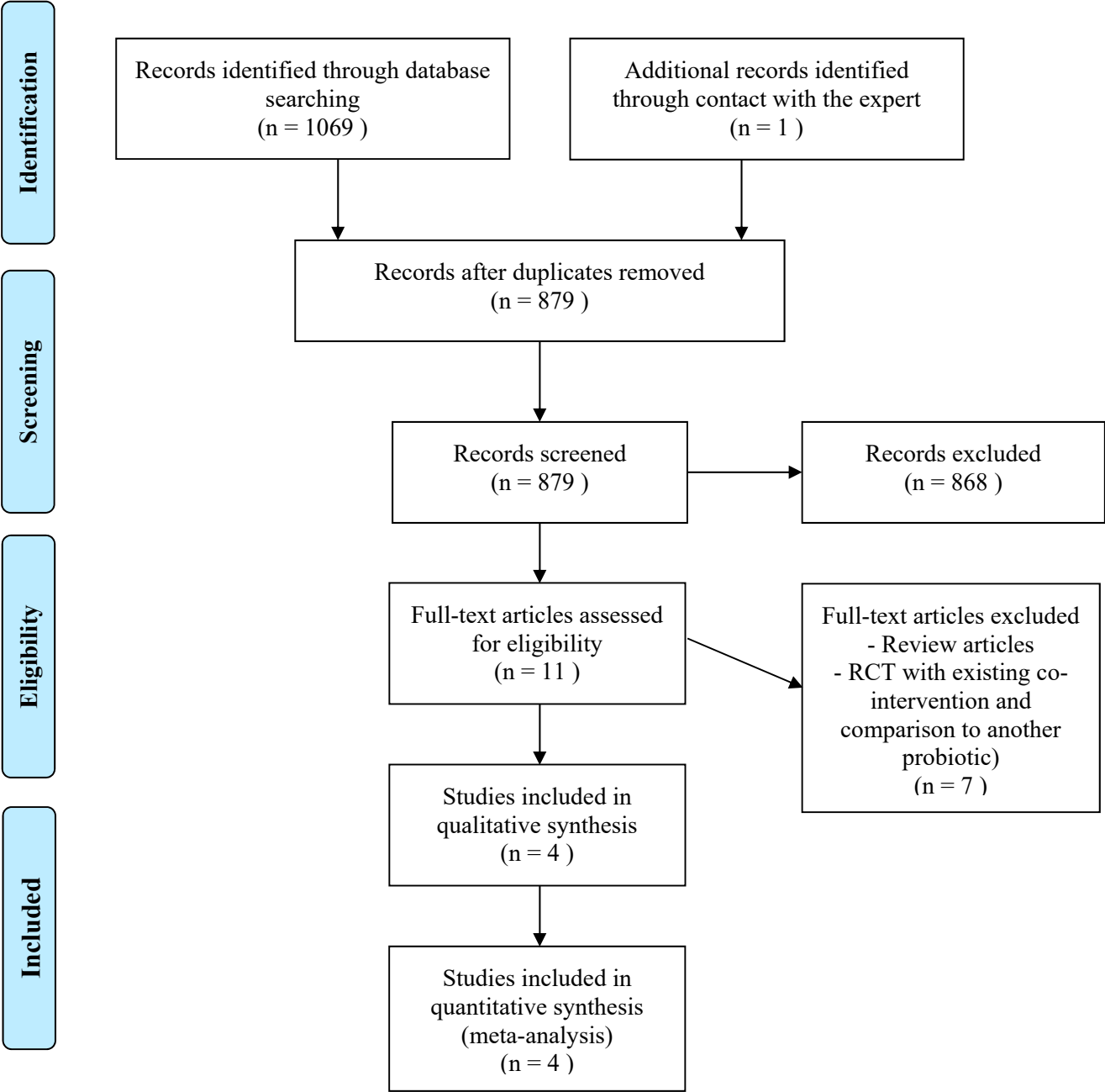


Figure S2. Risk of bias in the included studies.

	Random sequence generation (selection bias)	Allocation concealment (selection bias)	Blinding of participants and personnel (performance bias)	Blinding of outcome assessment (detection bias)	Incomplete outcome data (attrition bias)	Selective reporting (reporting bias)	Other bias
Dinleyici 2014 (1x10 <sup>8</sup> CFU/d, 5 d)(H)	+	+	●	?	?	?	+
Dinleyici 2015 (1x10 <sup>8</sup> CFU/d, 5 d)(O)	+	?	●	?	+	+	+
FrancaVilla 2012 (4x10 <sup>8</sup> CFU/d, ? d)(H)	+	+	+	+	●	?	+
Szymański 2019 (2x10 <sup>8</sup> CFU/d, 5 d)(H)	+	+	+	+	+	+	+