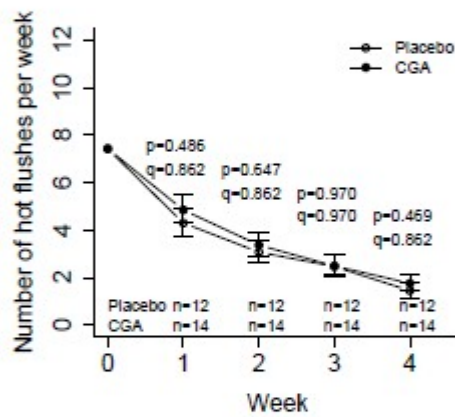
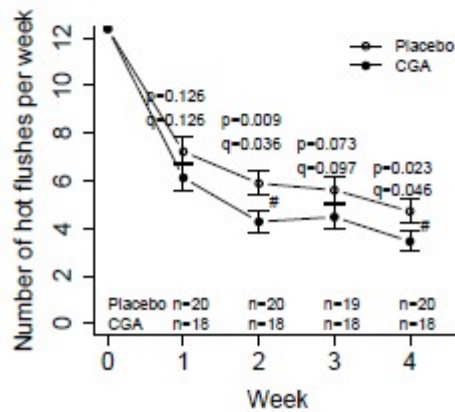


(a) Hot flushes / Premenopausal



(b) Hot flushes / Perimenopausal



(c) Hot flushes / Postmenopausal

**Figure S1.** Subgroup analysis of the estimated number of hot flushes per week (times/week). Error bars represent standard errors. # represents  $p < 0.05$  between groups. Numbers for Weeks 1, 2, 3, and 4 were estimated by the Poisson regression model with adjustment of Week 0 number. Participants with missing values were excluded. CGA, chlorogenic acid.