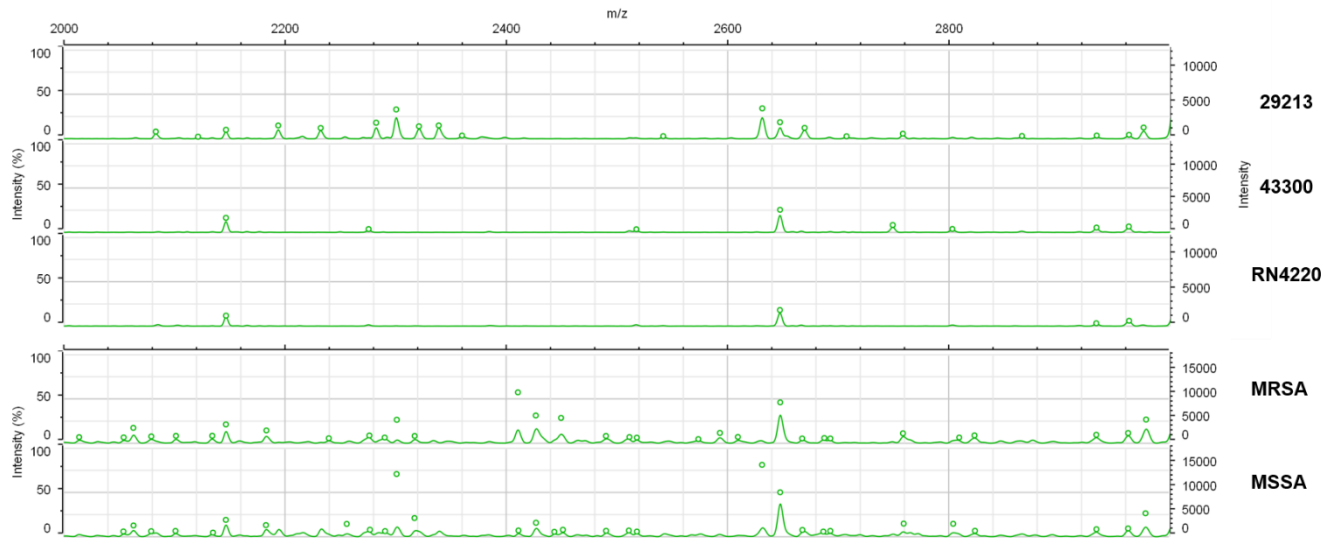


1



2

3

4

Supplementary Figure S1. Spectra and peak table of ATCC strains. The spectra showed m/z 2000 ~ 4000 range to easily reveal differences in each strain.

5

6 **Supplementary Table S1.** Specific peak of ATCC strains.

	1975	2194	2339	2410	2592	2631	3890	4607	5053	5541	6594	R peak	S peak	Result
ATCC 29213		O	O			O	O		O		O	2	3	grey zone
ATCC 43300									O	O		0	0	no peak
RN4220									O			0	0	no peak

7 The peak table shows the specific peaks of different strains; O: expressed peak.