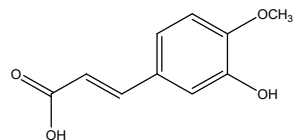


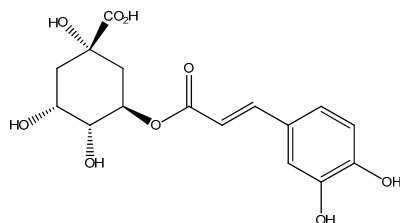
Figure S1. Chemical structures of the standard compounds identified in *E. purpurea*.

Ferulic acid



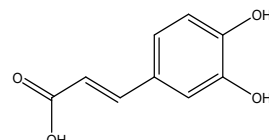
λ_{\max} = 326 nm
[M-H]⁻ = 193
MS²= 177(13),133(100),149(10)

5-O-caffeoylquinic acid



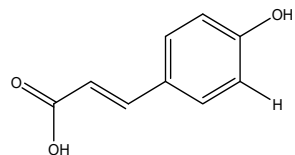
λ_{\max} = 325 nm
[M-H]⁻ = 353
MS²= 191(100),179(8),173(3),135(3)

Caffeic acid



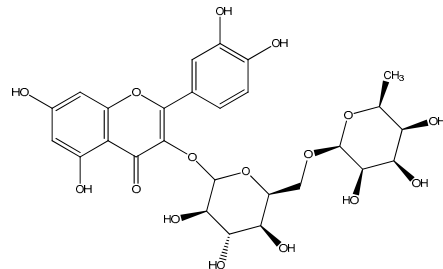
λ_{\max} = 324 nm
[M-H]⁻ = 179
MS²= 135(100)

p-Coumaric acid



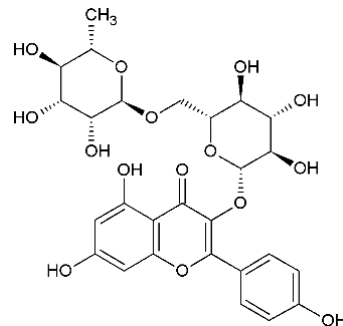
λ_{\max} = 312 nm
[M-H]⁻ = 163
MS²= 119(100)

Quercetin-3-O-rutinoside



λ_{\max} = 324 nm
[M-H]⁻ = 609
MS²= 301(100)

Kaempferol-3-O-rutinoside



λ_{\max} = 334 nm
[M-H]⁻ = 593
MS²= 285(100)