

Supplementary Materials: β -Cyclodextrin as a Functional Excipient Used for Enhancing the Diminazene Aceturate Bioavailability

Narcisa Marangoci, Daniel Timpu, Andra Corciova, Cornelia Mircea, Anca-Roxana Petrovici, Alina Nicolescu, Elena-Laura Ursu, Valentin Nastasa, Andra-Cristina Bostanaru, Mihai Mares, Mihaela Pertea and Mariana Pinteala

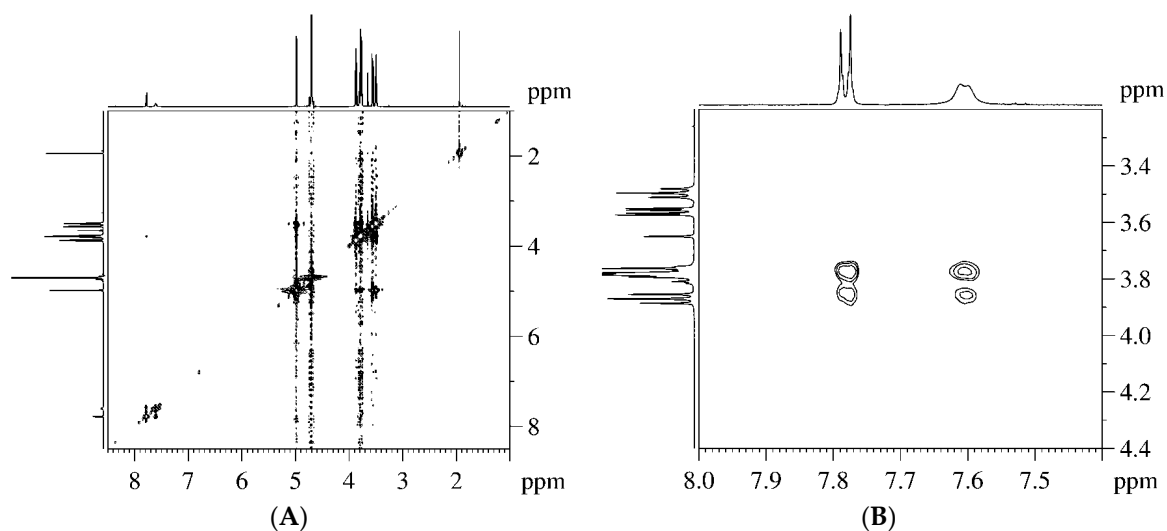


Figure S1. (A) The ROESY spectrum of DA: β CD inclusion complex of 1:2 molar ratio, recorded in D_2O , with suppression of the water signal; (B) Expansion of the ROESY spectrum showing the NOE cross-peaks between diminazene aromatic protons and the internal β CD protons H-3, H-5 and H-6.

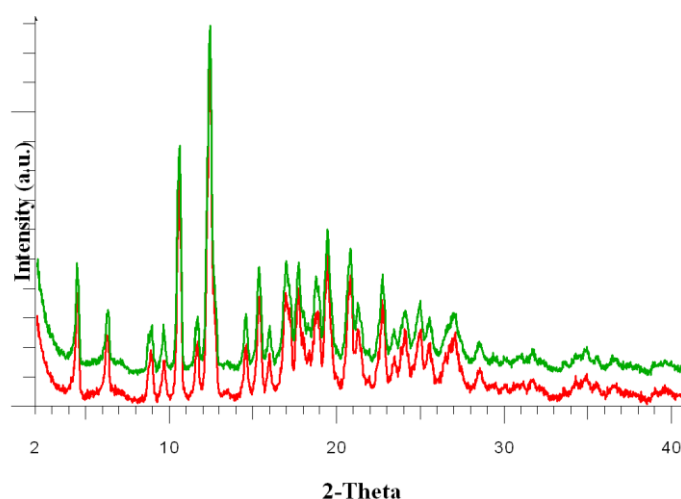


Figure S2. WAXD diffractograms of DA: β CD (1:1) after 18 h (red diffractogram) and 36 h (green diffractogram).

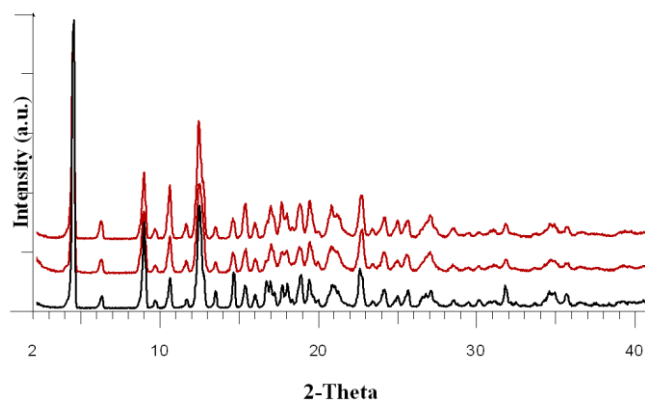


Figure S3. WAXD diffractograms of initial β CD (black-lower); after the freeze-drying process (brown-middle); after 18 hours in water saturated atmosphere (brown-upper).

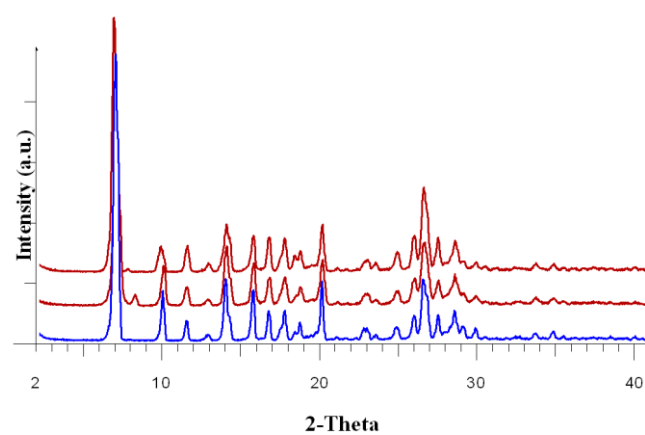


Figure S4. WAXD diffractograms of initial DA (blue-lower); after the freeze-drying process (brown-middle); after 18 hours in water saturated atmosphere (brown-upper).

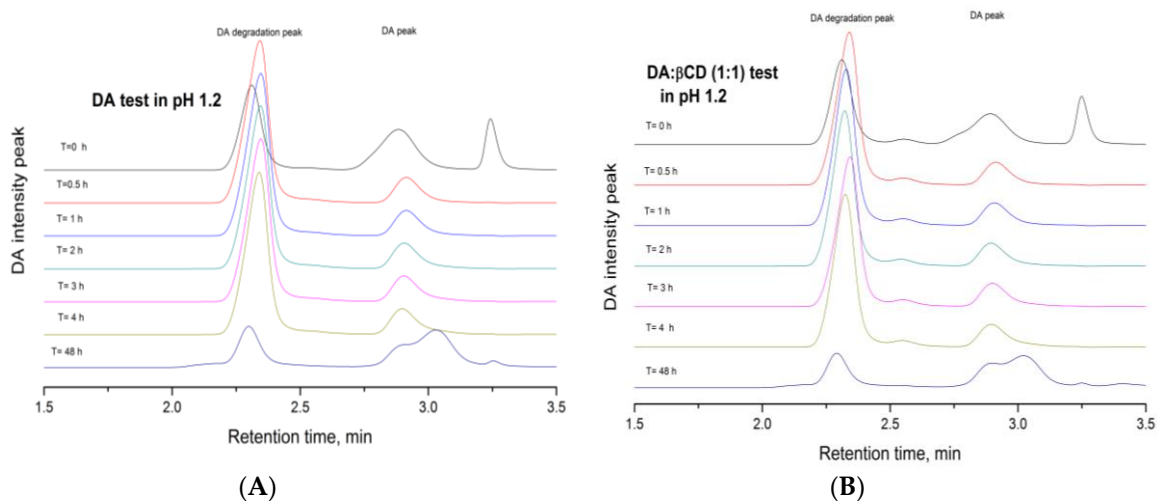


Figure S5. HPLC chromatograms of: (A) DA and (B) DA: β CD (1:1) inclusion complex water solutions of 1 mg/mL DA at pH=1.2. Mobile phase flow: 0.5 mL/min.

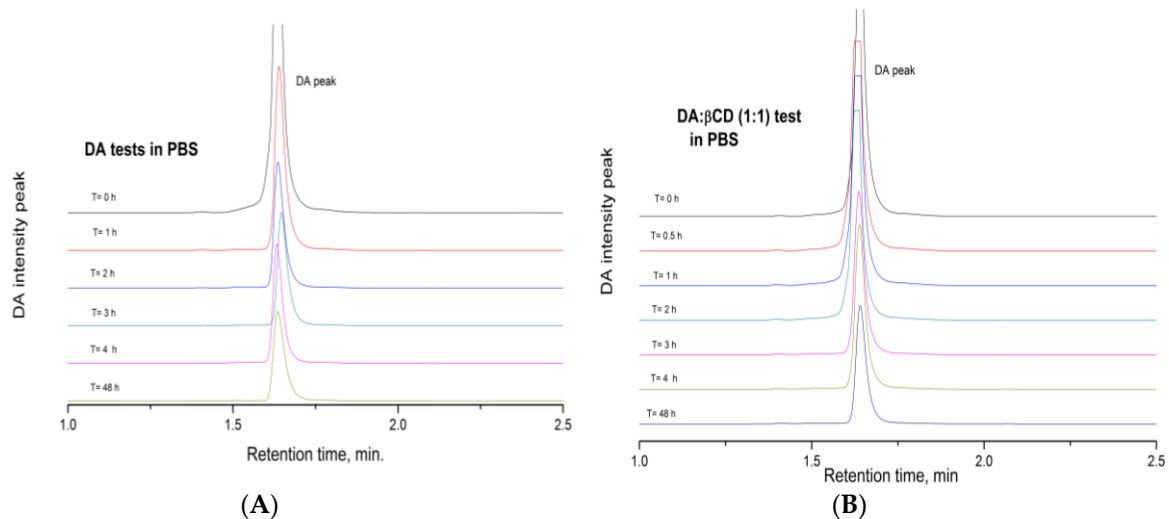


Figure S6. HPLC chromatograms of water solutions at neutral pH (using PBS) of: (A) DA and (B) DA:βCD (1:1) inclusion complex compounds; mobile phase flow: 1 mL/min.