

Supporting materials

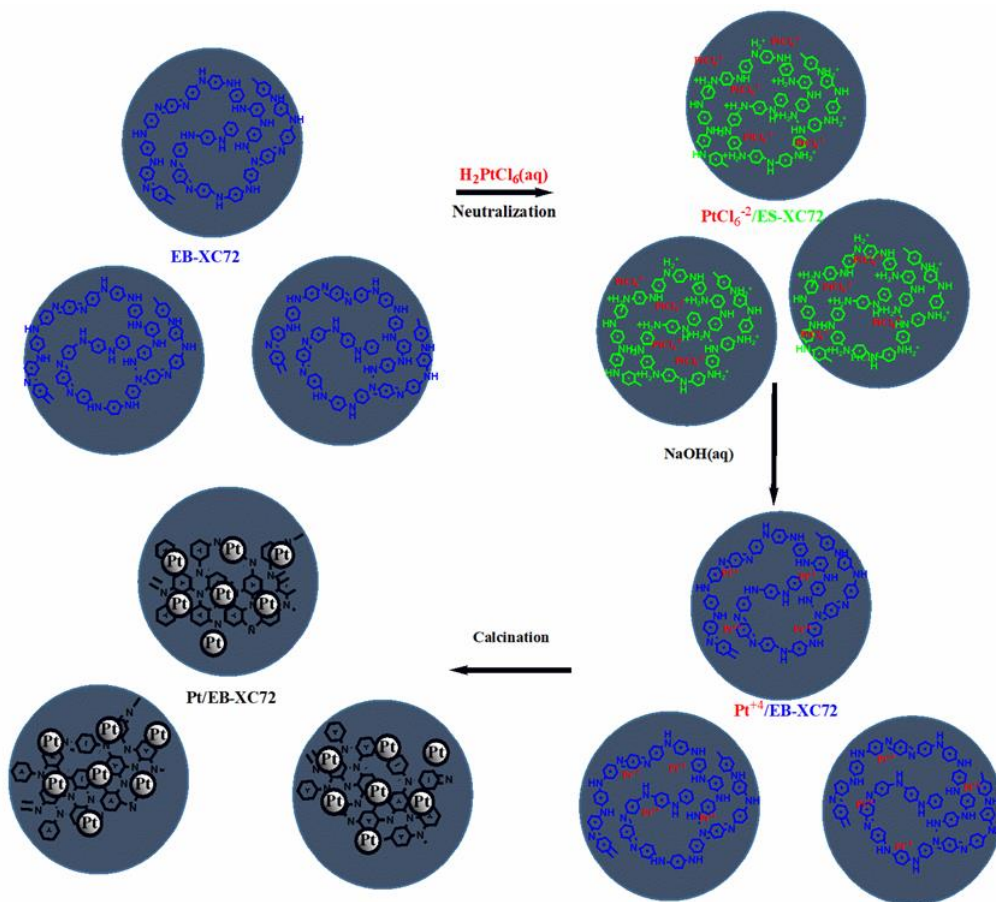


Figure S1. schematic diagram of the formation of Pt/EB-XC72 catalyst.

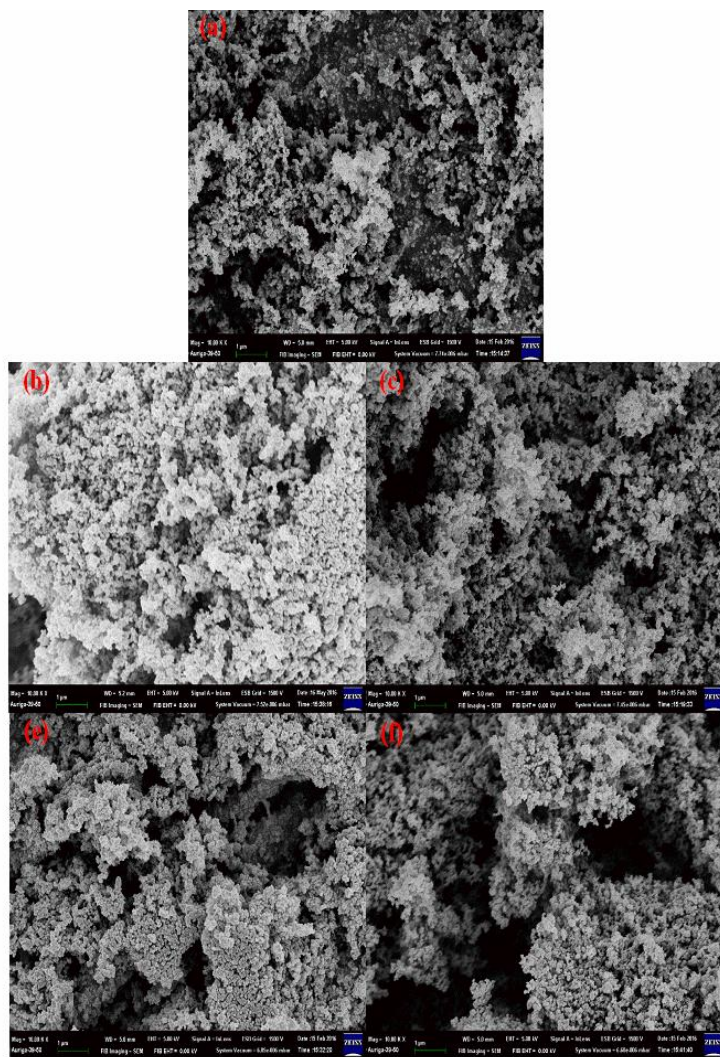


Figure S2. SEM images of Pt/XC72 treated at different temperatures. neat XC72, (b) 500 °C, (c) 600 °C, (d) 800 °C, (e) 900 °C.

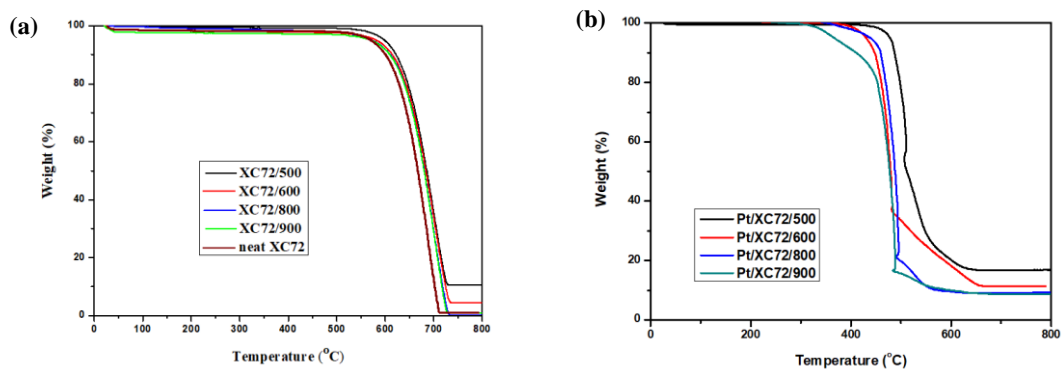


Figure S3. TGA thermograms of various XC72 treated at different temperatures without Pt (a) with Pt.