

Design, Synthesis, and Antibacterial Studies of Novel Cationic Amphipathic Cyclic Undecapeptides and their Linear Counterparts against Virulent Bacterial Strains

Hisham N. Farrag¹, Toshinari Maeda¹ and Tamaki Kato^{1*}

¹ Department of Biological Functions Engineering, Graduate School of Life Science and Systems Engineering, Kyushu Institute of Technology, Wakamatsu campus, Fukuoka Prefecture, Japan.; farrag.hisham320@mail.kyutech.jp (H.N.F.); toshi.maeda@life.kyutech.ac.jp (T.M.); tmkato@life.kyutech.ac.jp (T.K.)

* Correspondence: tmkato@life.kyutech.ac.jp

Table of Content

No	Title	Figure
1	HPLC chart of the protected sidechain linear (a) [LY] and (b) [LH]	S1
2	HPLC chart of sidechain protected (a) [CY] and (b) [CH] peptide	S2
3	HPLC chart of the pure (a) [CY] and (b) [CH] peptide after purification with a semi-preparative RP-HPLC	S3
4	HPLC chart of the pure (a) [LH] and (b) [LY] peptide after purification with a semi-preparative RP-HPLC	S4
5	MALDI TOF mass spectra of (4)	S5
6	MALDI TOF mass spectra of (2)	S6
7	MALDI TOF mass spectra of (3)	S7
8	MALDI TOF mass spectra of (1)	S8

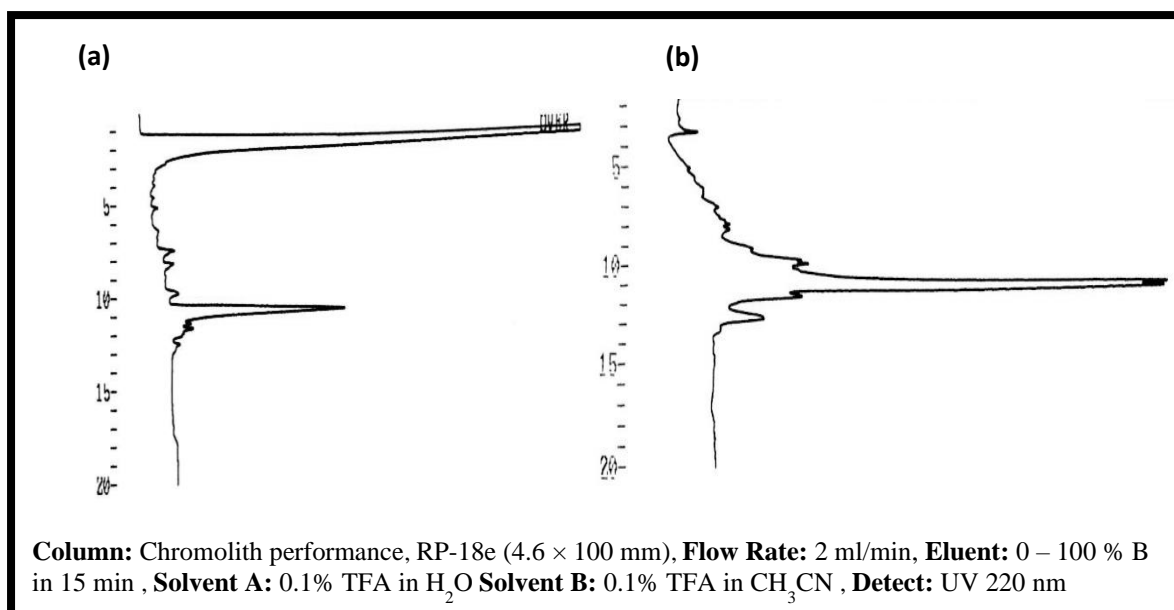


Figure S1. HPLC chart of the protected sidechain linear (a) [LY] and (b) [LH] at a retention time, RT= 10.6 min and 10.7 min, respectively.

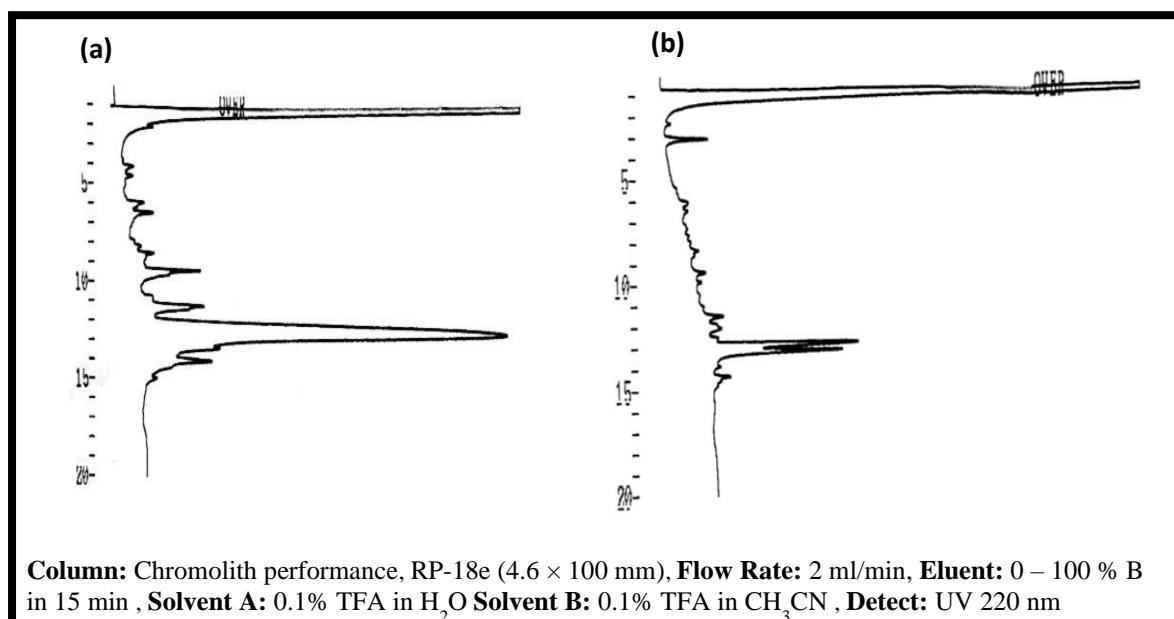


Figure S2. HPLC chart of sidechain protected (a) [CY] and (b) [CH] peptide with RT = 12.4 min. and 12.8 min, respectively

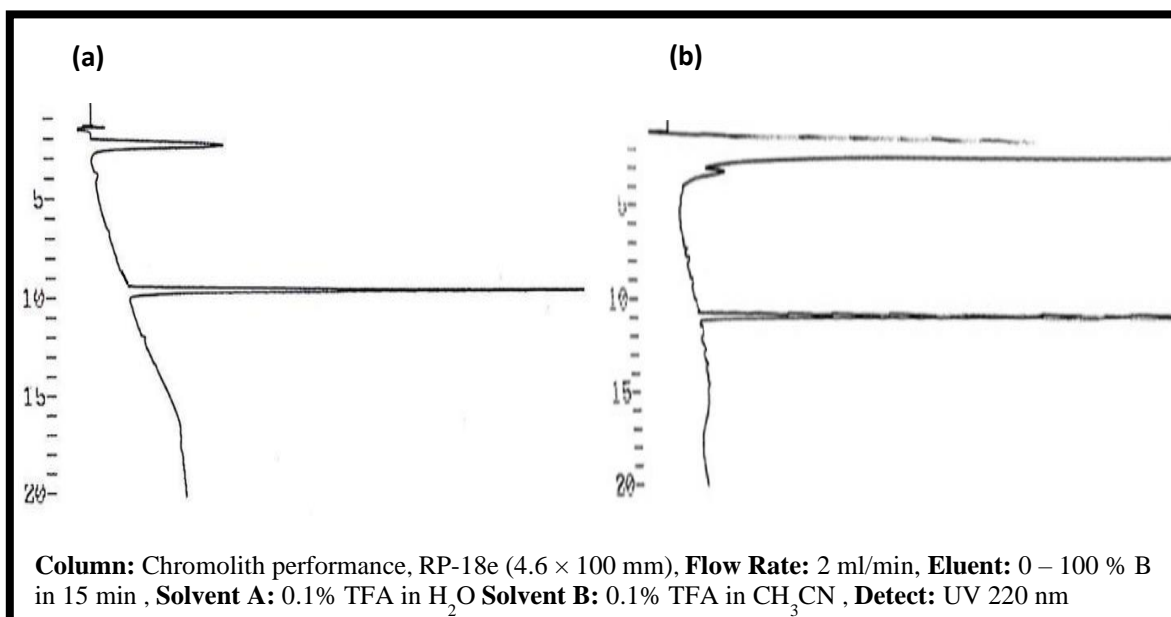


Figure S3. HPLC chart of the pure (a) [CY] and (b) [CH] peptide after purification with a semi-preparative RP-HPLC showing a sharp peak at RT = 10.2 min and 10.9 min, respectively

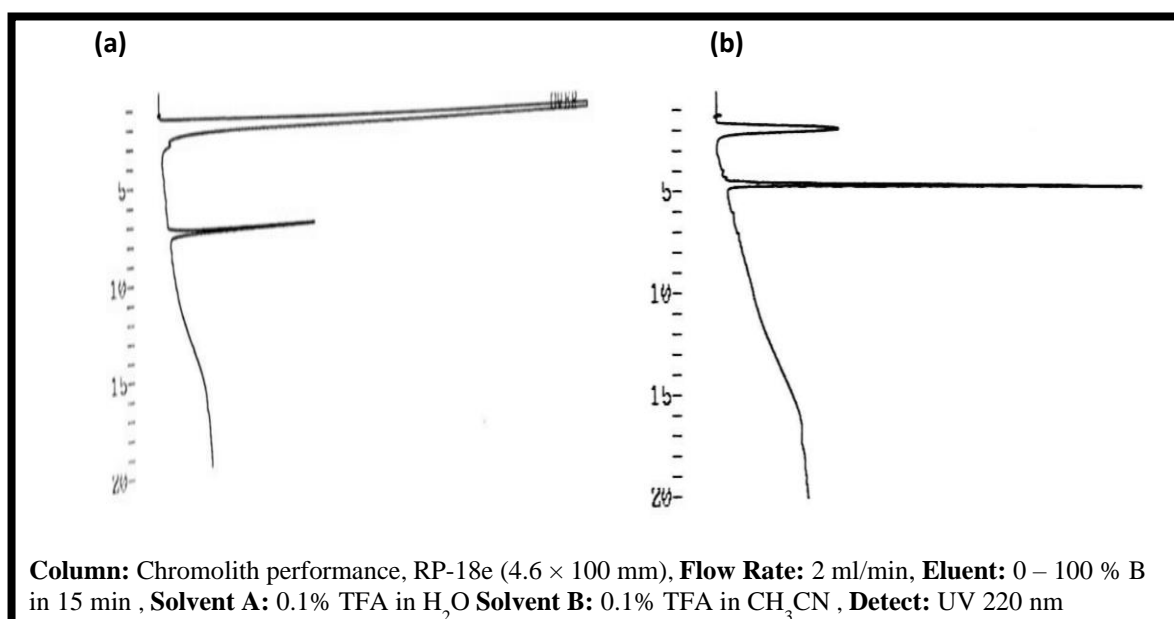


Figure S4. HPLC chart of the pure (a) [LH] and (b) [LY] peptide after purification with a semi-preparative RP-HPLC showing a sharp peak at RT = 7.2 min and 5.1 min, respectively.

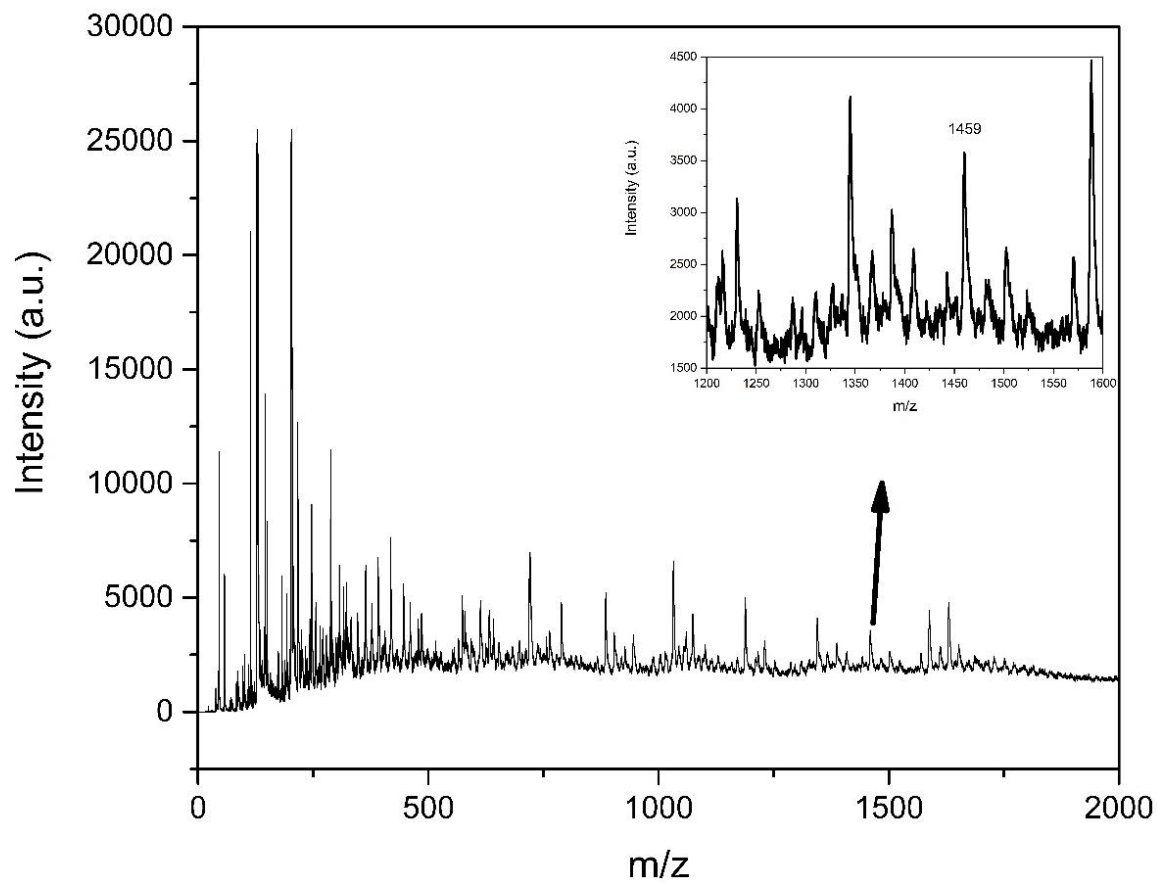


Figure S5. MALDI TOF mass spectra of $(4)[M+2H]^+$

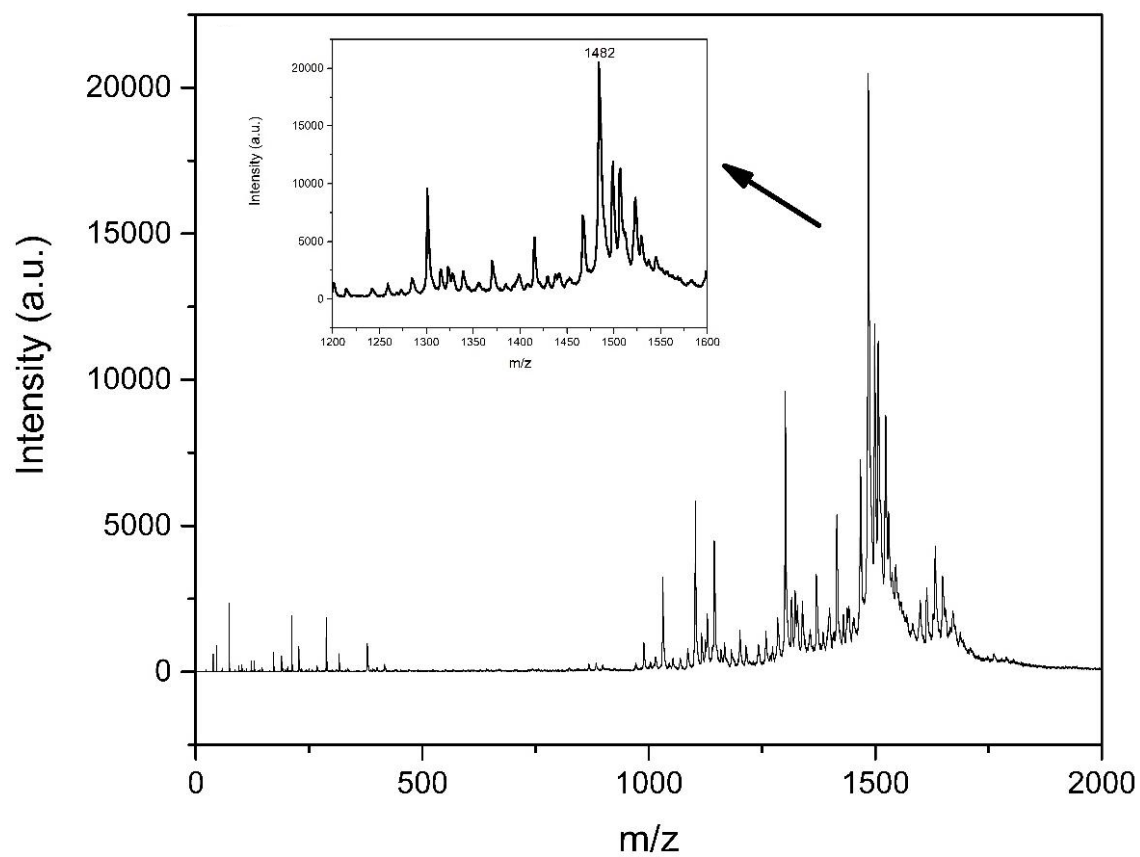


Figure S6. MALDI TOF mass spectra of (2) [M]⁺.

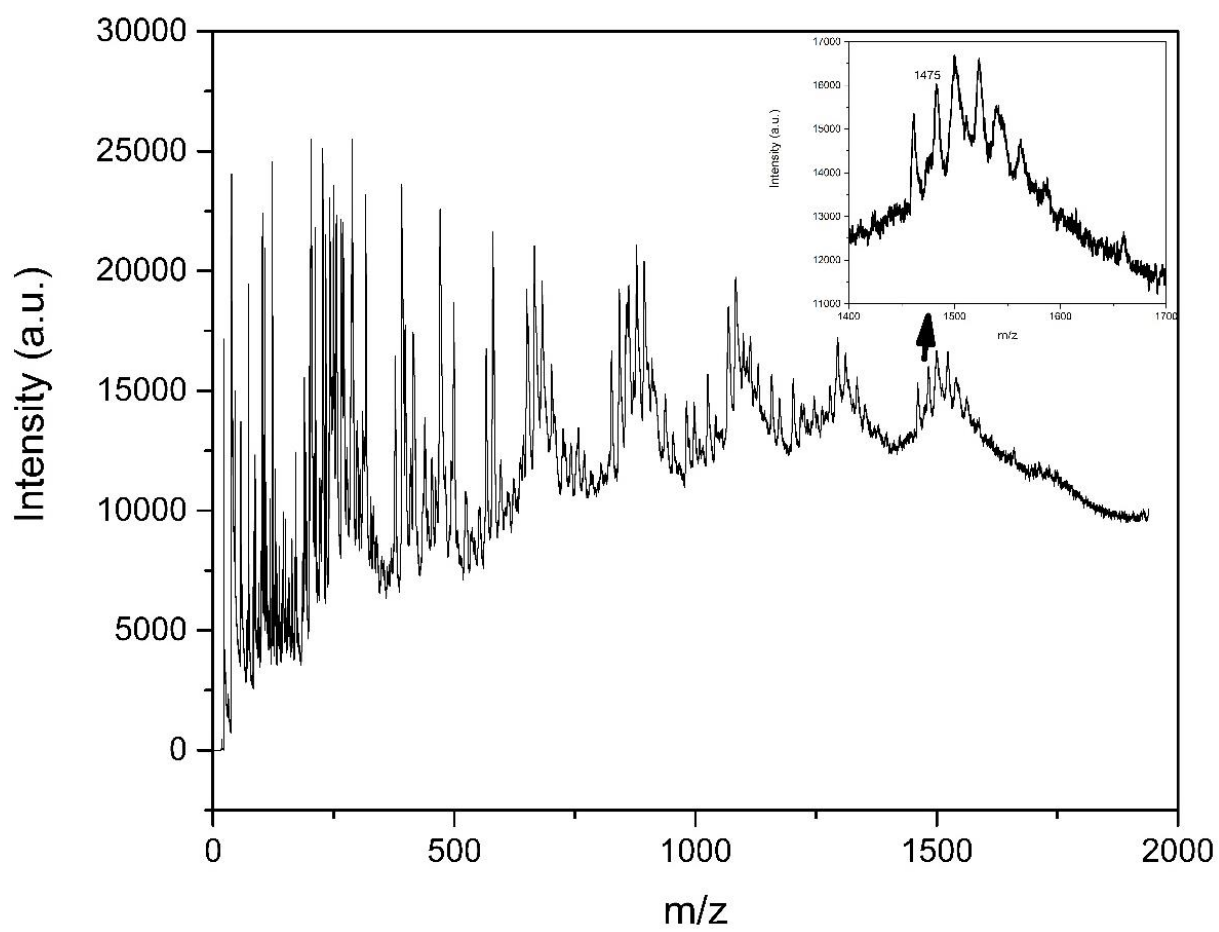


Figure S7. MALDI TOF mass spectra of **(3)** $[M]^+$.

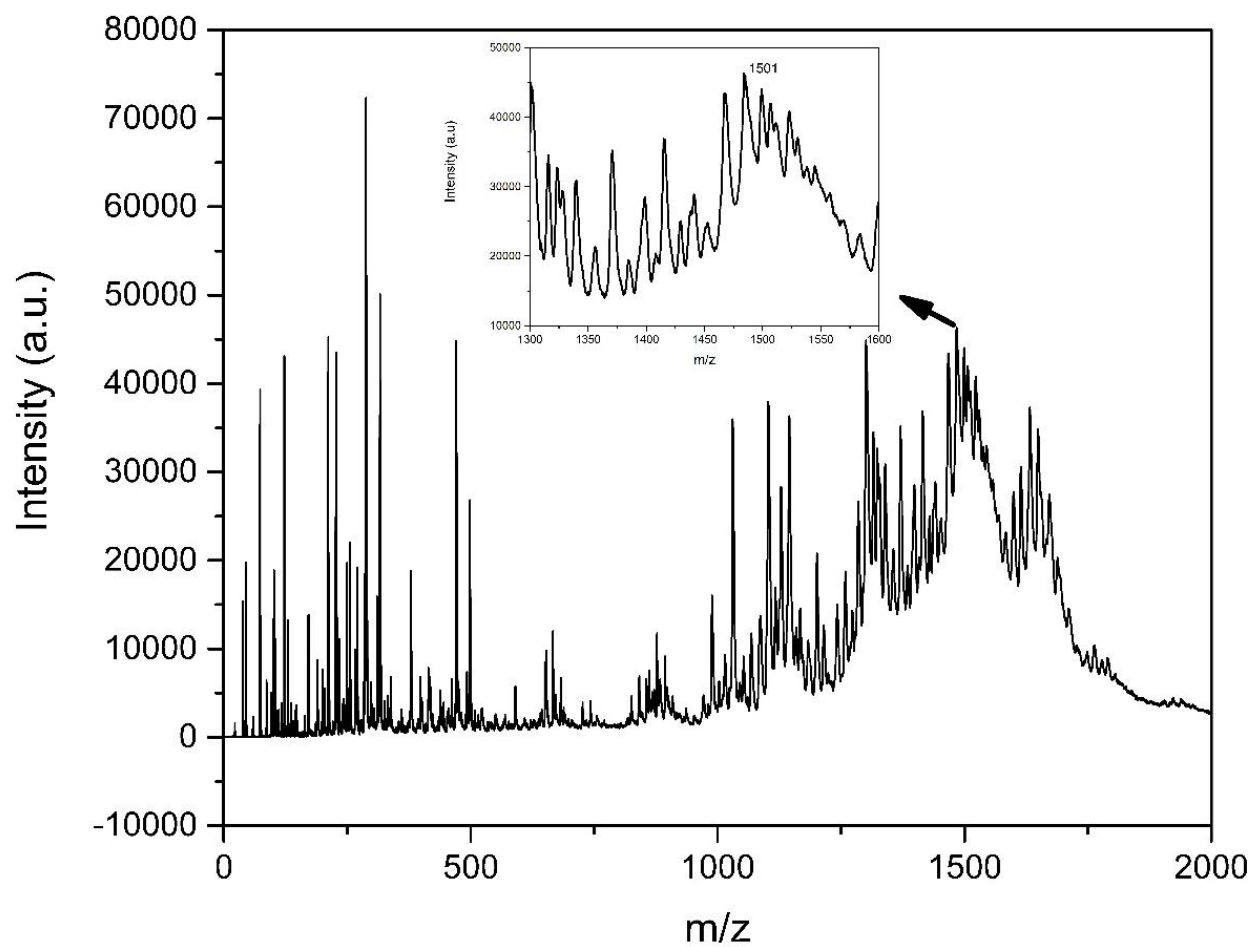


Figure S8. MALDI TOF mass spectra of (1) [M]⁺.