

Supplementary Materials

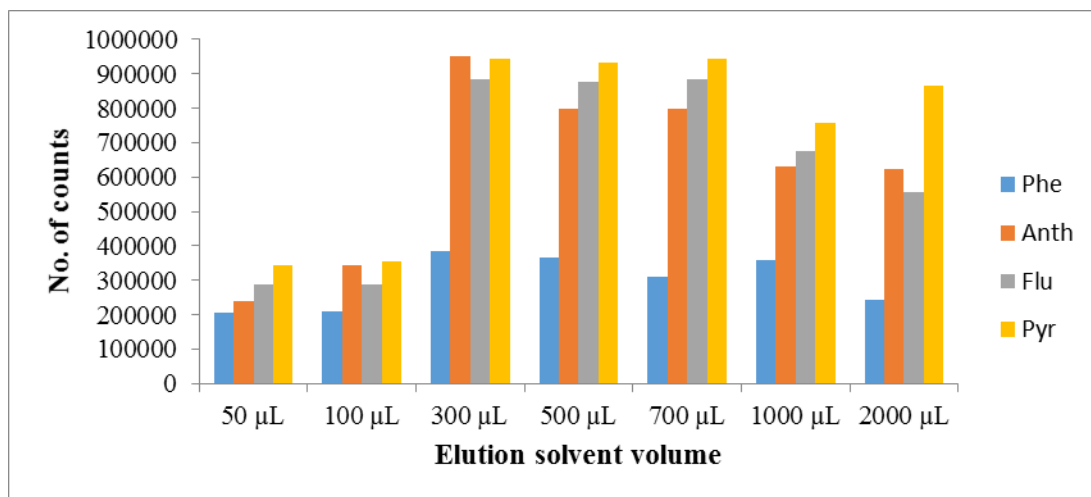


Figure S1. Effect of eluent solvent volume. Extraction conditions: sample volume, 15 mL; extraction time, 30 min; eluent solvent, acetonitrile; sonication desorption time, 5 min.

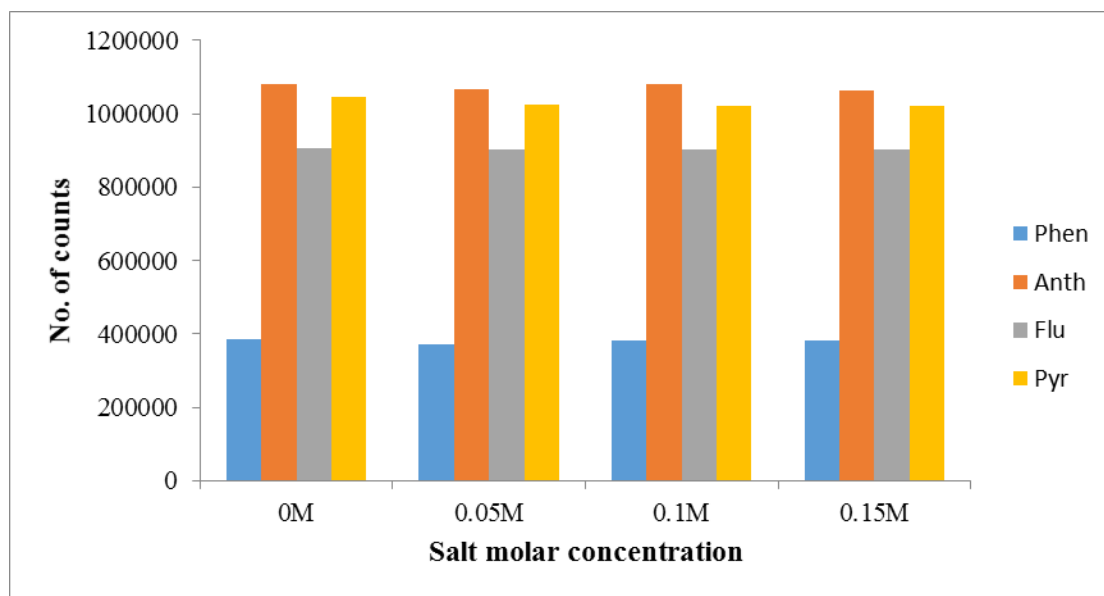


Figure S2. Effect of salt concentration. Extraction conditions: sample volume, 15 mL; extraction time, 30 min; eluent solvent, acetonitrile; volume of elution solvent, 300 μL; desorption time, 5 min.

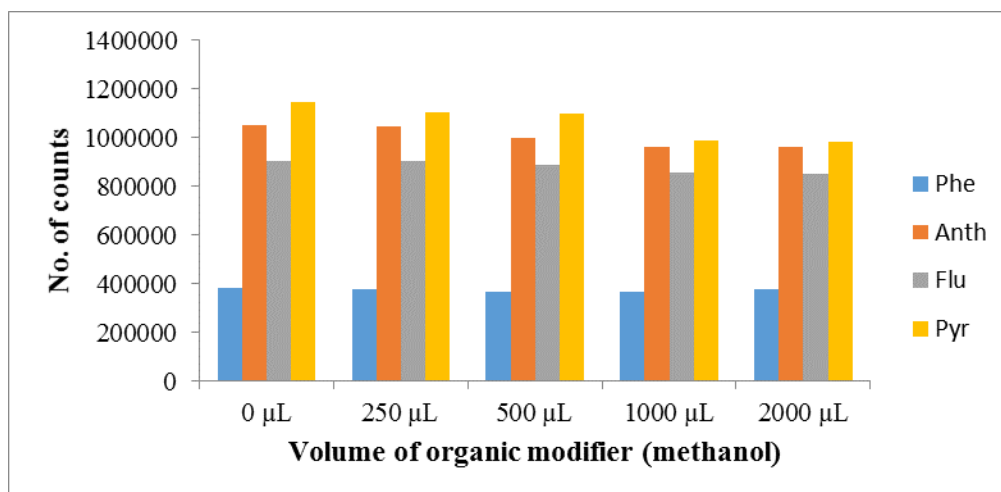


Figure S3. Effect of organic modifier volume. Extraction conditions: sample volume, 15 mL; extraction time, 30 min; eluent solvent, acetonitrile; volume of elution solvent, 300 µL; desorption time, 5 min.

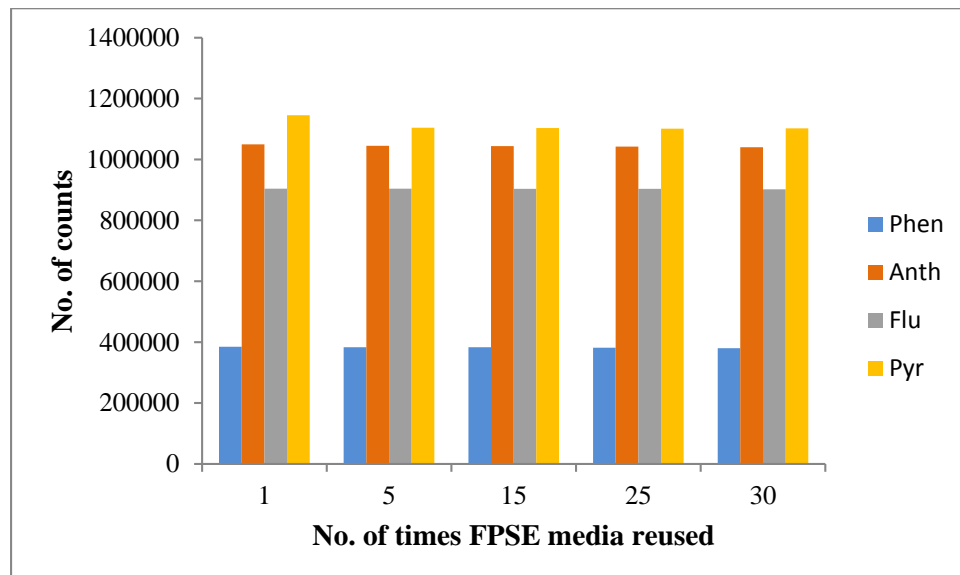


Figure S4. Regeneration and reusability of sol-gel C18 coated FPSE media. Extraction conditions: sample volume, 15 mL; extraction time, 30 min; eluent solvent, acetonitrile; volume of elution solvent, 300 µL; desorption time, 5 min.