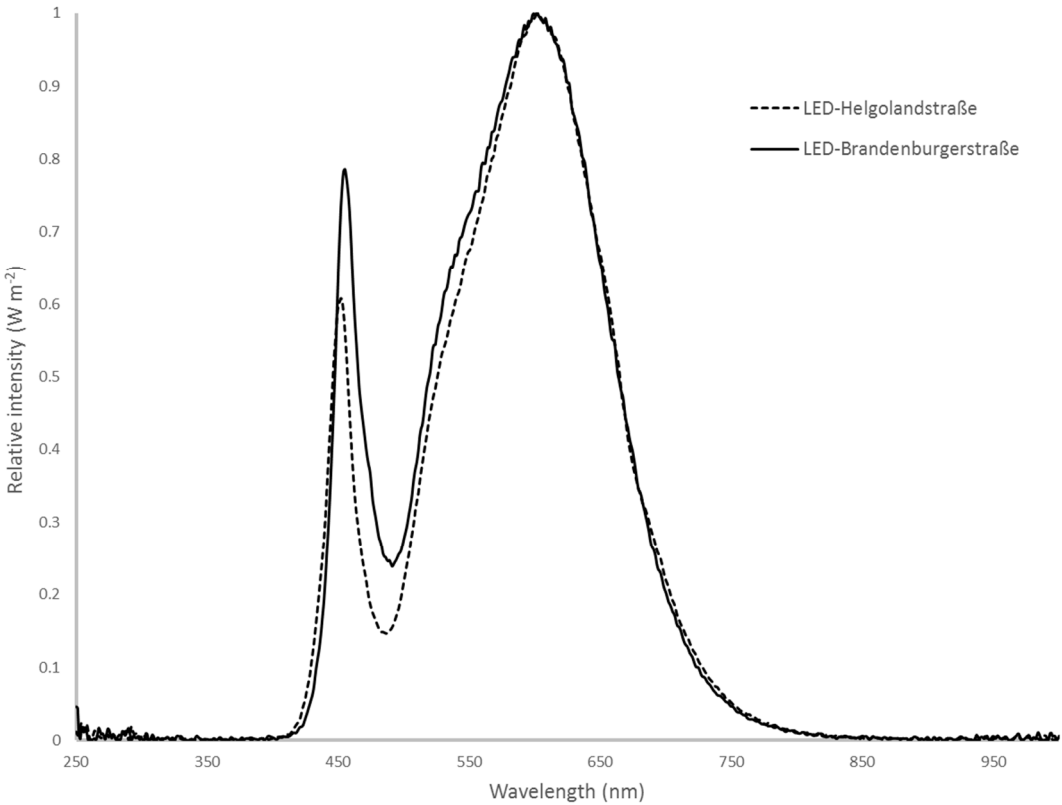
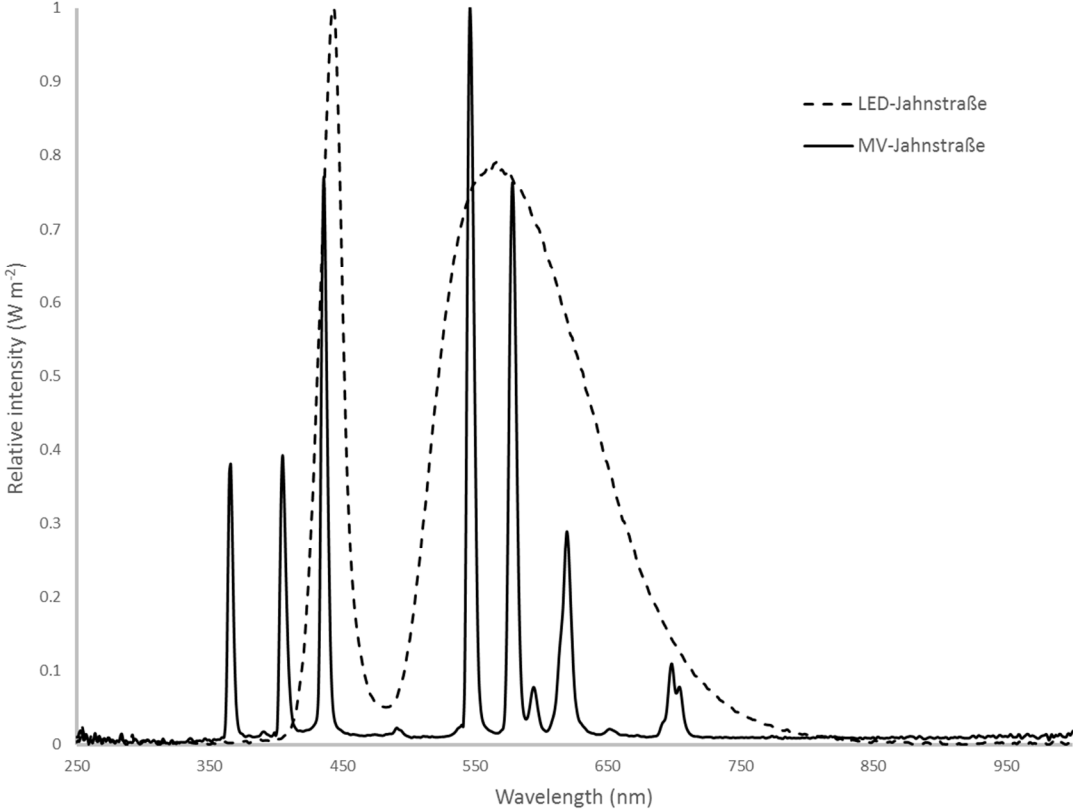


Supplementary Materials



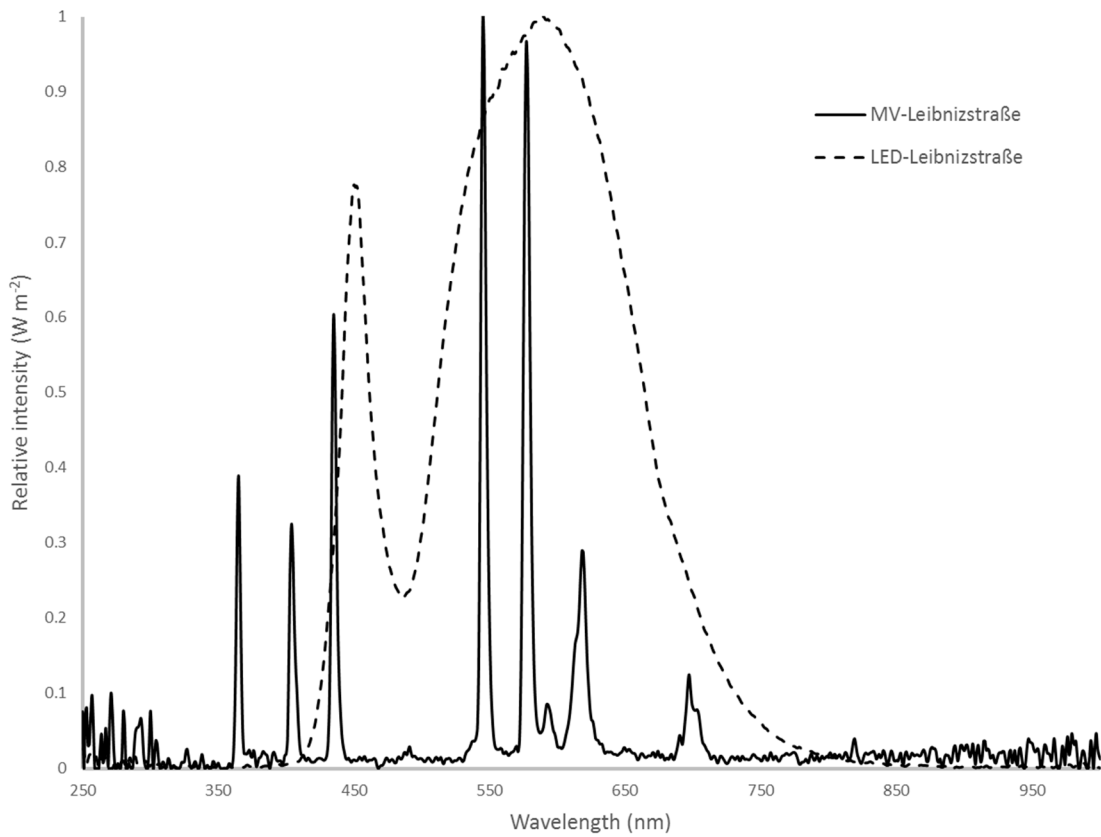


Figure S1. Spectral composition for the different light sources as measured using a spectro-radiometer (JETI Specbos 1211 UV, Jena Technische Instrumente, Jena, Germany).

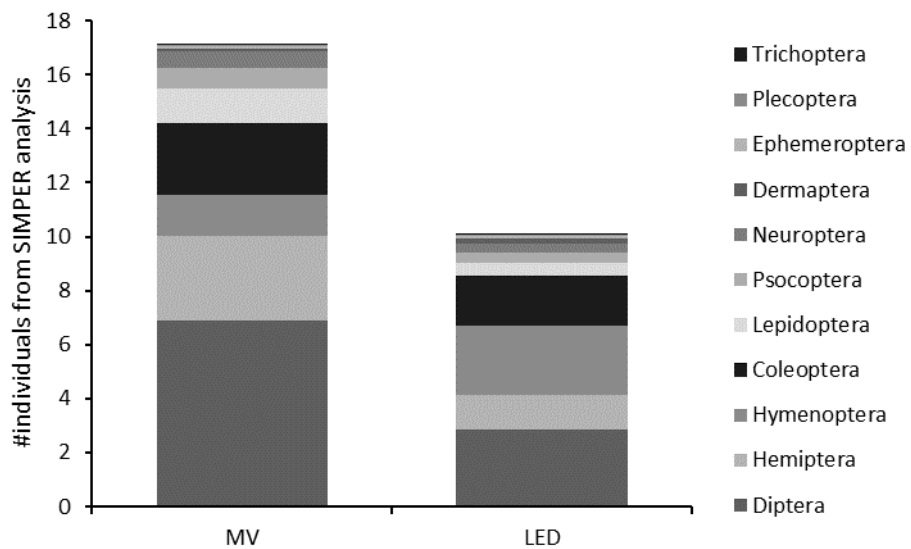


Figure S2. Relative contribution of the different insect orders.

Table 1. Results from the SIMilarity PERcentage (SIMPER) analysis (Clarke 1993) that was used to assess which taxa contributed to the dissimilarity of the communities (after one-way perMANOVA). The MV/LED ratio gives insight in the relative number of insects attracted to either light source. A value higher than 1 indicates that insects from this group are attracted more strongly to MV than to LED.

	Average	sd	MV	LED	Cumsum	MV/LED
Diptera	0.276	0.25	6.89	2.86	0.34	2.41
Hemiptera	0.132	0.18	3.14	1.30	0.51	2.42
Hymenoptera	0.106	0.15	1.50	2.57	0.64	0.58
Coleoptera	0.095	0.14	2.70	1.83	0.76	1.48
Lepidoptera	0.067	0.10	1.25	0.49	0.84	2.56
Psocoptera	0.038	0.08	0.77	0.34	0.89	2.24
Neuroptera	0.035	0.07	0.61	0.35	0.93	1.76
Dermaptera	0.027	0.07	0.10	0.17	0.96	0.58
Ephemeroptera	0.022	0.07	0.11	0.12	0.99	0.94
Plecoptera	0.005	0.03	0.03	0.02	1.00	1.49
Trichoptera	0.002	0.01	0.02	0.02	1.00	1.11