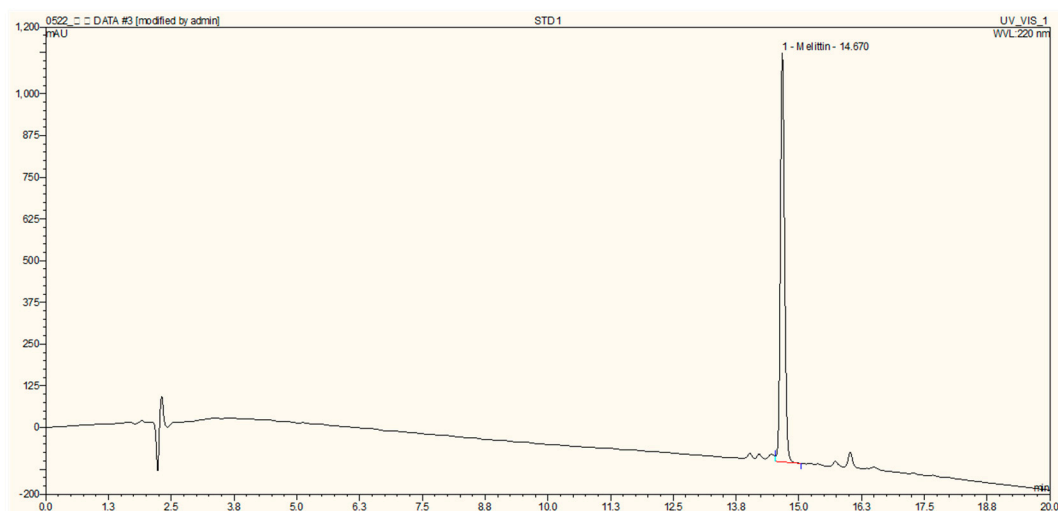


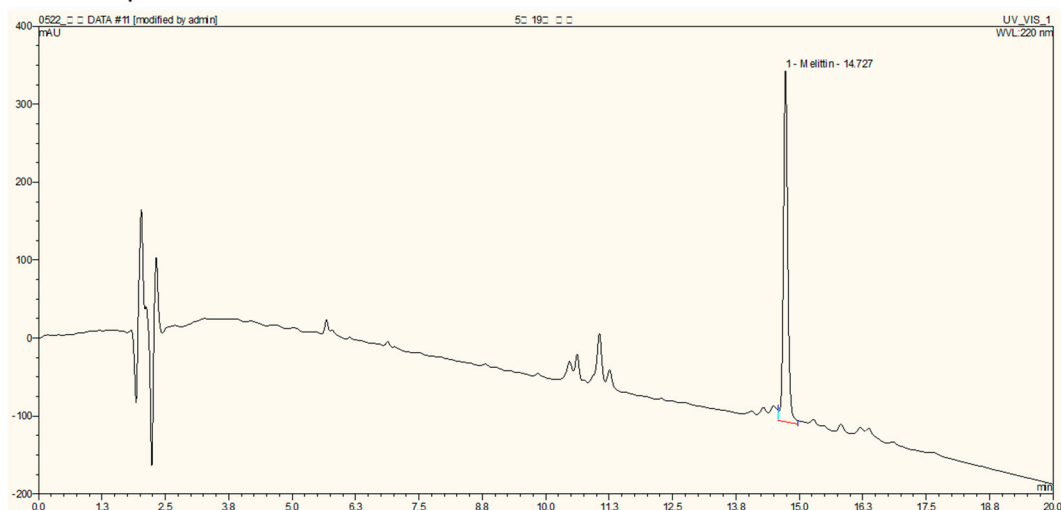
# Supplementary Materials: Suppressive Effects of Bee Venom Acupuncture on Paclitaxel-Induced Neuropathic Pain in Rats: Mediation by Spinal $\alpha_2$ -Adrenergic Receptor

Jiho Choi, Changhoon Jeon, Ji Hwan Lee, Jo Ung Jan, Fu Shi Quan, Kyungjin Lee, Woojin Kim and Sun Kwang Kim

Standard-Melittin



Sample-BV



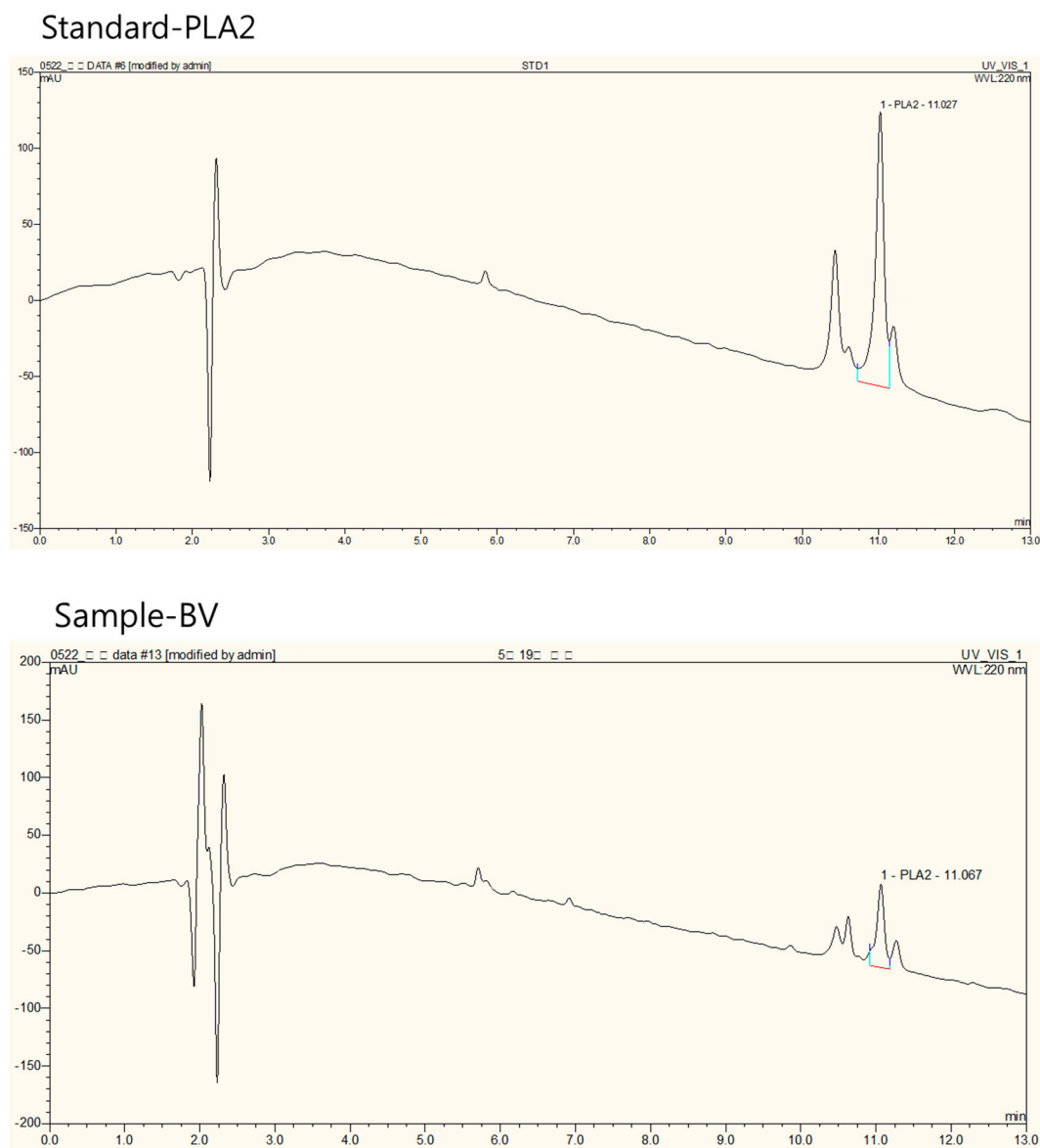
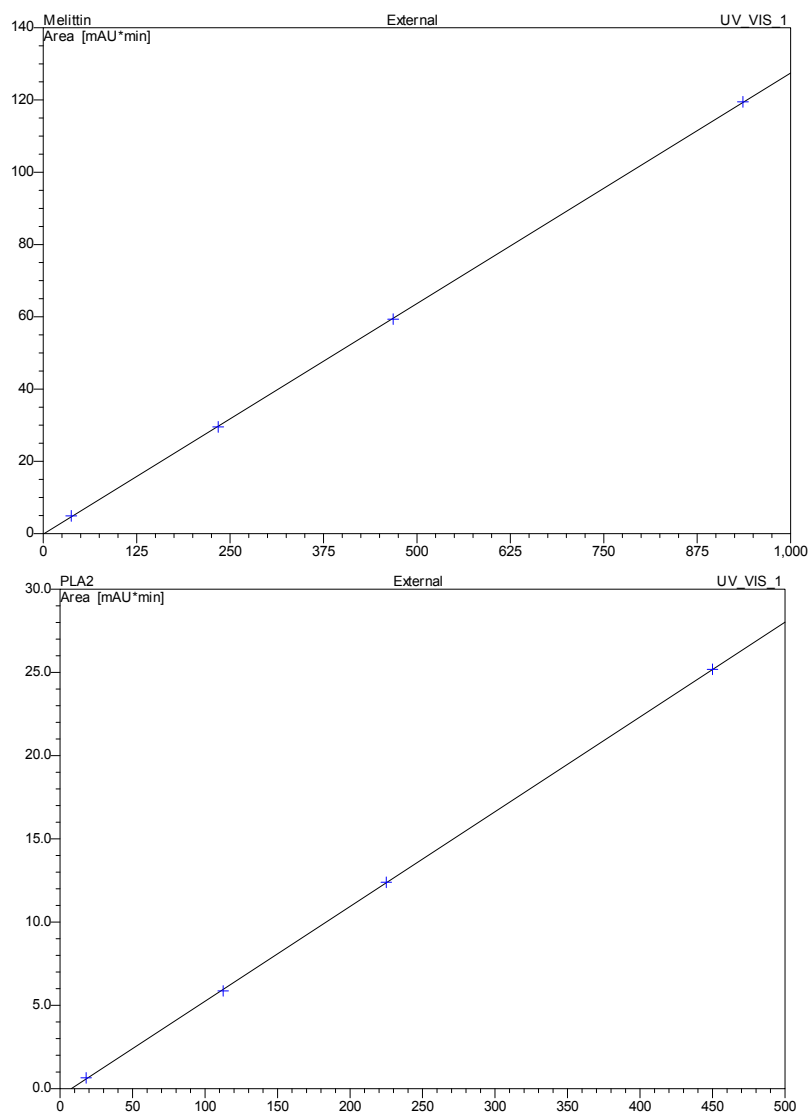


Figure S1. Representative HPLC analysis of Melittin and Phospholipase A2 (PLA2) in BV.

### External Calibration Curve

PLA2:  $y = 0.0569x + 0.4401$  ( $r^2=0.999959$ )

Melittin:  $y = 0.1272x + 0.1407$  ( $r^2=0.999973$ )



**HPLC condition**

HPLC: Thermo Dionex (Thermo Dionex, Sunnyvale, CA, USA)

Column: Agilent Zorbox 300SB-C18 (5 u, 4.6x150 mm)

Eluent:

min	Flow (ml/min)	A(0.3%TFA) %	Acetonitrile %
0	0.8	90	10
25	0.8	10	90
30	0.8	10	90
31	0.8	90	10
35	0.8	90	10

Detector: UV 220nm

Oven: 30 °C